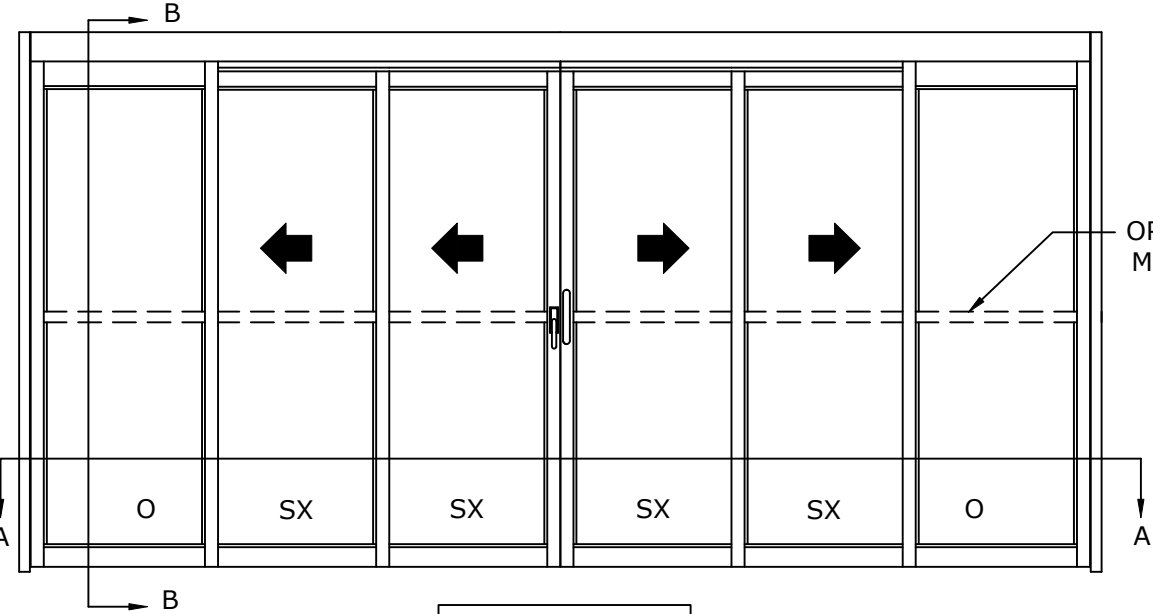


MODEL NO.	OVERALL FRAME WIDTH (A)	CLEAR DOOR OPENING (B)	BREAKOUT OPENING (C)	ACTIVE & SIDELITE LEAF WIDTH (D)	ROUGH OPENING WIDTH (E)
VMT6FSL-10	120" [3048.0]	61 13/16" [1570.0]	66 13/16" [1697]	21 1/16" [535.0]	120 1/2" [3060.7]
VMT6FSL-12	144" [3657.6]	77 13/16" [1976.4]	82 13/16" [2103.4]	25 1/16" [636.6]	144 1/2" [3670.3]
VMT6FSL-14	168" [4267.2]	93 13/16" [2382.8]	98 13/16" [2509.8]	29 1/16" [738.2]	168 1/2" [4279.9]
KEY:		(2*A/3)-18 3/16" (2*A/3)-[462.0]	(2*A/3)-13 3/16" (2*A/3)-[335]	(A/6)+1 1/16" (A/6)+[27.0]	A+1/2" A+[12.7]

CONSULT FACTORY FOR ALL CUSTOM CONFIGURATION SIZES OR SIZES OVER 12'.



OPTIONAL
MUNTINS

BREAKOUT SIDE

SCALE - 1:30

OVERHEAD
SUPPORT REQUIRED

ACCESS
COVER

CLOSED HEADER DESIGN
TO REDUCE PARTICLE
INFILTRATION TO ROOM

*SMOKE
SEALS

ACTIVE LEAF
STD. HT.
83 5/16"
[2116.1]

ROH
STD. HT.
90"
[2286.0]

1/4" [6.3]
SHIM, CAULK
AND ADD
APPROPRIATE
FASTENERS

OFH STD.
89 3/4"
[2279.7]

SIDELITE
STD. HT.
84 15/16"
[2154.2]

CDO
STD. HT.
84 3/16"
[2138.4]

1/4"
[6.4]

4"
[101.7]

1/8"
[4.0]

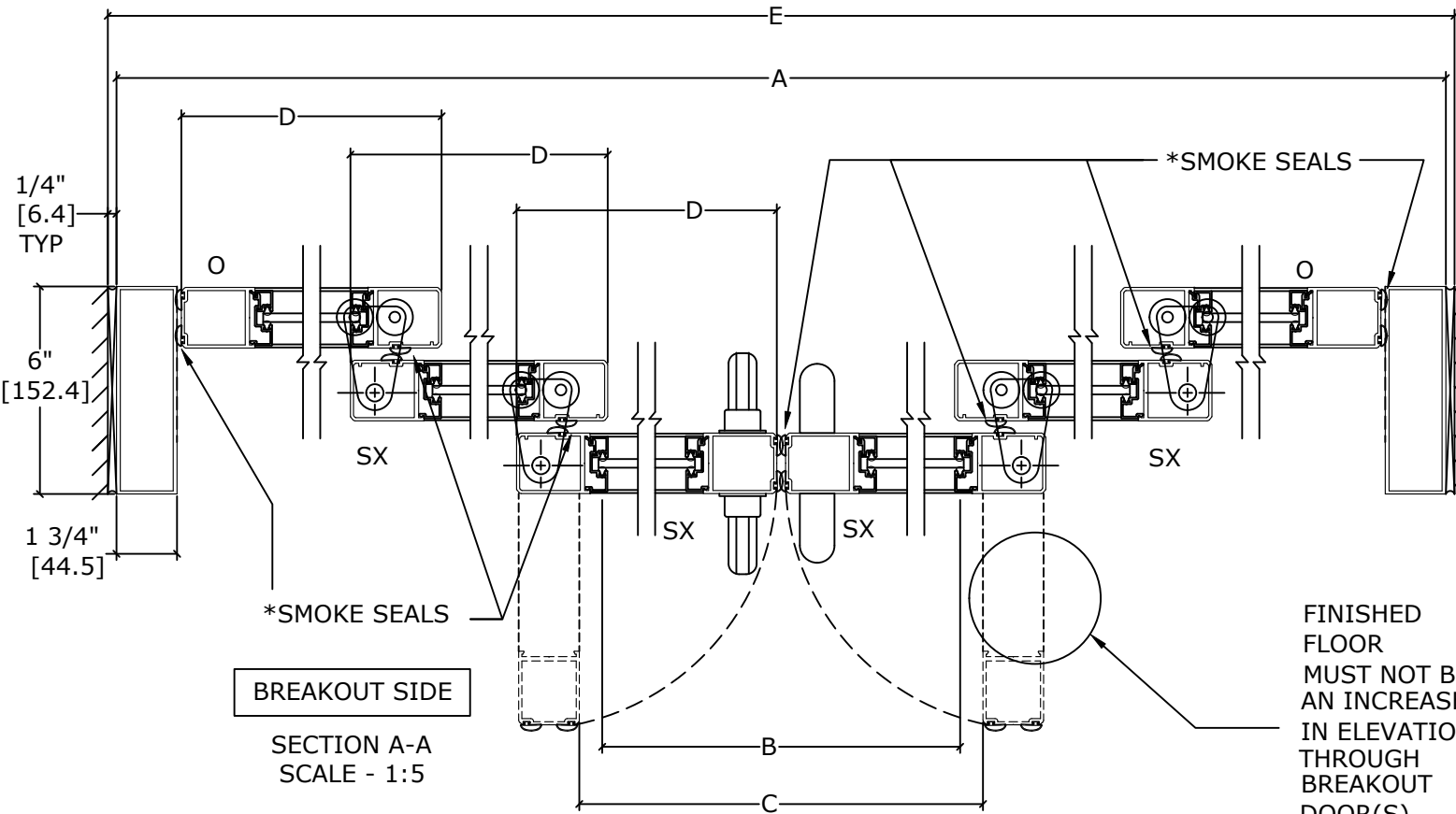
F.F.L.

BREAKOUT SIDE

CONCEALED
SMOKE SWEEPS

SECTION B-B
SCALE - 1:5

FINISHED FLOOR
MUST NOT BE
CONCAVE ACROSS
THE CLEAR
DOOR OPENING
AND NOT OUT OF
LEVEL MORE THAN 1/8"



- DOORS WILL BREAK OUT IN ANY POSITION.

REFER TO RELEVANT [LOCAL, STATE, NATIONAL,
OR AHJ] BUILDING CODE FOR MIN DOOR HEIGHT
& MIN/MAX WIDTH ALLOWABLE FOR EGRESS
REQUIREMENT IN CONJUNCTION WITH TABLE.

NOTES:

STANDARD PACKAGE CONSISTS OF:

- STANDARD FINISH:
CLASS 1, .018MM, CLEAR- AA-M12C22A41
- NARROW STILE RAILS
- 1/4" GLASS STOPS AND BLOCKS
- NURSE ASSIST MAGNETIC CATCHES
- POSITIVE LATCHING
- CONCEALED SWEEPS
- SMOKE RATED SEALS

OPTIONS AVAILABLE:

- SPECIAL FINISHES
- PACKAGE WILL ACCEPT UP TO 1 1/4" [31.8]
INSULATED GLASS, SEE SHEET AA-13 FOR DETAILS
- 7" & 10" BOTTOM RAILS, SEE SHEET AA-14 FOR DETAILS
- MUNTINS, SEE SHEET AA-14 FOR DETAILS
- SELF-CLOSING, SEE SHEET AA-2 FOR DETAILS
- SEE SHEET OS-1 FOR ALL OTHER OPTIONS.

DWG NO. 1016226											
DRN BY	DBN	DATE	10/16/18	CHK BY	CLW	DATE	10/16/18	REV.	4.0	DATE	01/20/22