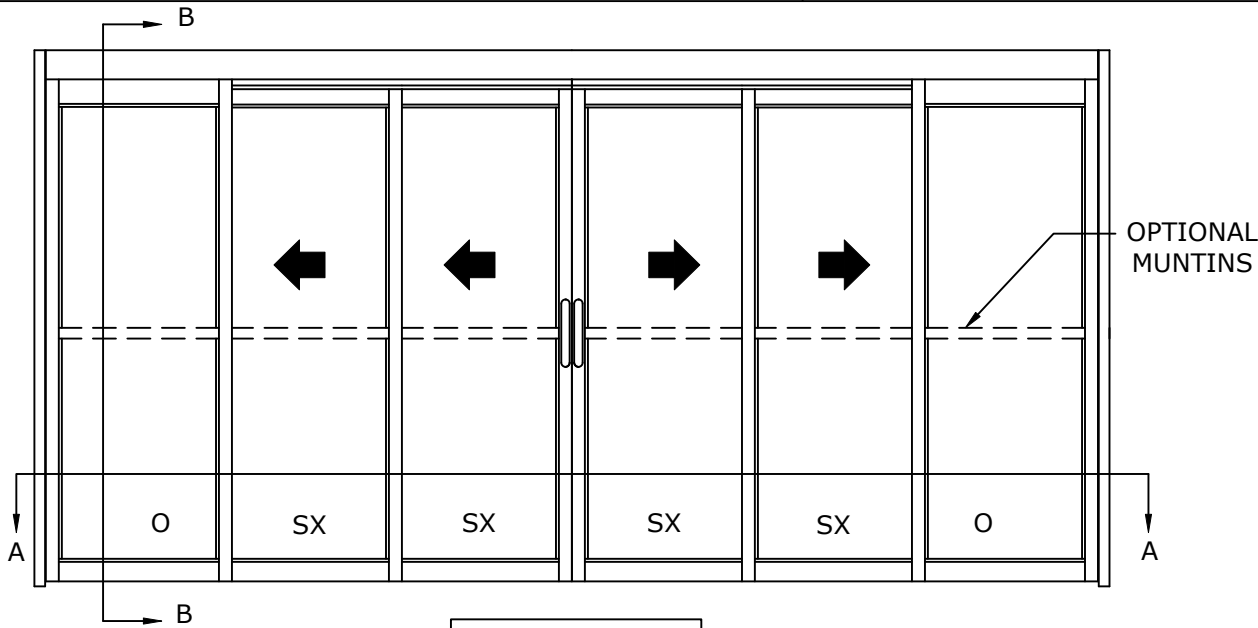


ASSA ABLOY VERSAMAX ICU

OVERHEAD CONCEALED FIXED SIDELITE TRACKLESS BI-PART
NARROW STILE TELESCOPIC EQUAL PANEL SLIDING DOOR SYSTEM



BREAKOUT SIDE

SCALE - 1:30

OVERHEAD —
SUPPORT REQUIRED

1/4" [6.3]
SHIM, CAULK
AND ADD
- APPROPRIATE
FASTENERS

ACCESS
COVER

ACTIVE LEAF
STD. HT.
83 5/16"
[2116.1]

SIDELITE
STD. HT.
84 15/16"
[2154.2]

ROH
STD. HT.
90"
[2286.0]

CDO
STD. HT.
84 3/16"
[2138.4]

FINISHED FLOOR
MUST NOT BE
CONCAVE ACROSS
THE CLEAR-
DOOR OPENING
AND NOT OUT OF
LEVEL MORE THAN 1/8"

SECTION B-B
SCALE - 1:5

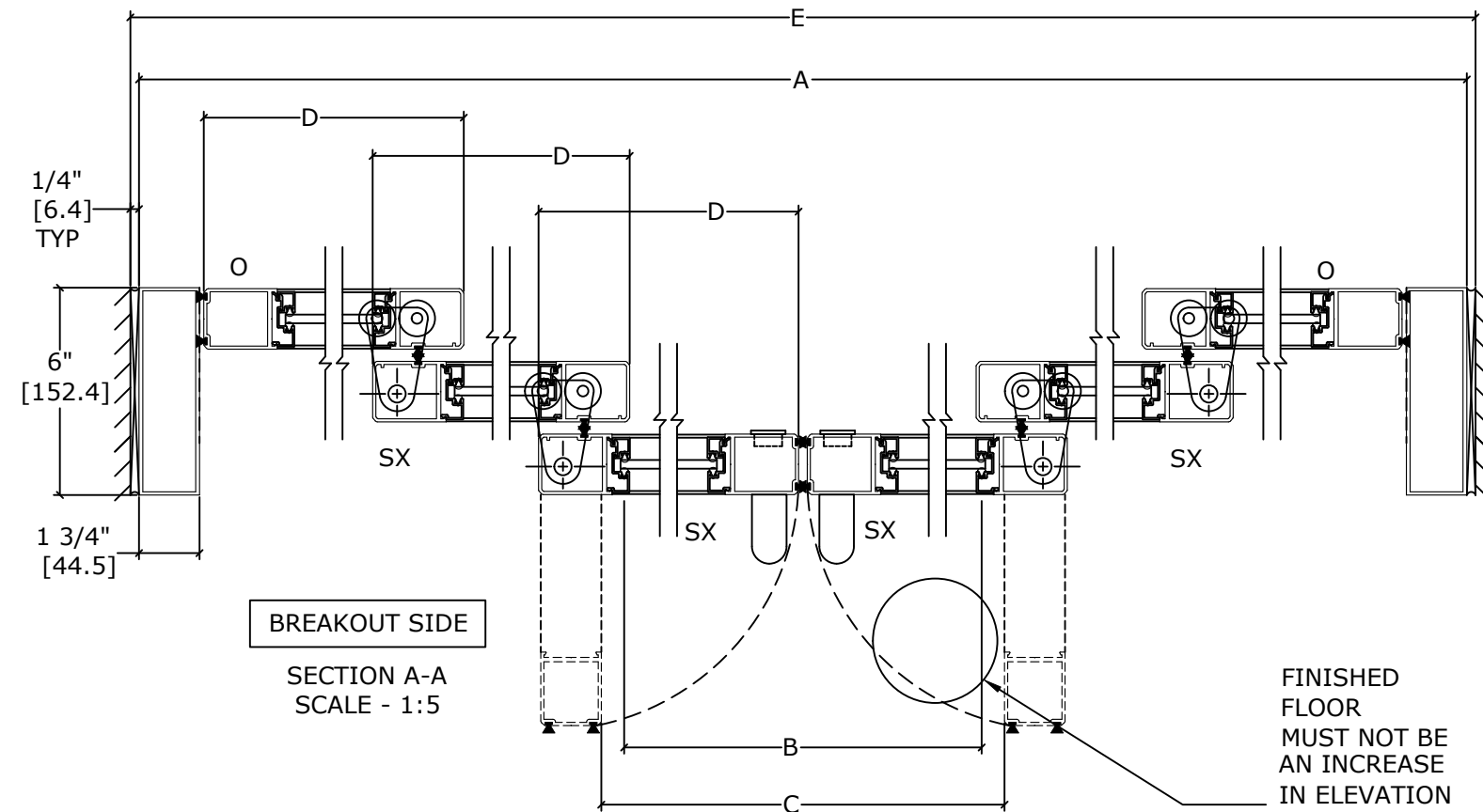
1/8"
[4.0]

→ F.F.L.

DIMENSIONS FOR 1/4" [6.4] GLASS

MODEL NO.	OVERALL FRAME WIDTH (A)	CLEAR DOOR OPENING (B)	BREAKOUT OPENING (C)	ACTIVE & SIDELITE LEAF WIDTH (D)	ROUGH OPENING WIDTH (E)
VMT6FSL-10	120" [3048.0]	61 13/16" [1570.0]	66 13/16" [1697]	21 1/16" [535.0]	120 1/2" [3060.7]
VMT6FSL-12	144" [3657.6]	77 13/16" [1976.4]	82 13/16" [2103.4]	25 1/16" [636.6]	144 1/2" [3670.3]
VMT6FSL-14	168" [4267.2]	93 13/16" [2382.8]	98 13/16" [2509.8]	29 1/16" [738.2]	168 1/2" [4279.9]
KEY:		(2*A/3)-18 3/16" (2*A/3)-[462.0]	(2*A/3)-13 3/16" (2*A/3)-[335]	(A/6)+1 1/16" (A/6)+[27.0]	A+1/2" A+[12.7]

CONSULT FACTORY FOR ALL CUSTOM CONFIGURATION SIZES OR SIZES OVER 12'.



BREAKOUT SIDE

SECTION A-A
SCALE - 1:5

FINISHED
FLOOR
MUST NOT BE
AN INCREASE
IN ELEVATION
THROUGH
BREAKOUT
DOOR(S)
PATH

- DOORS WILL BREAK OUT IN ANY POSITION.

REFER TO RELEVANT [LOCAL, STATE, NATIONAL, OR AHJ] BUILDING CODE FOR MIN DOOR HEIGHT & MIN/MAX WIDTH ALLOWABLE FOR EGRESS REQUIREMENT IN CONJUNCTION WITH TABLE.

DWG NO. 1016225

DRN BY	DBN	DATE	10/16/18	CHK BY	CLW	DATE	10/16/18	REV.	4.0	DATE	01/20/22
--------	-----	------	----------	--------	-----	------	----------	------	-----	------	----------

ASSA ABLOY