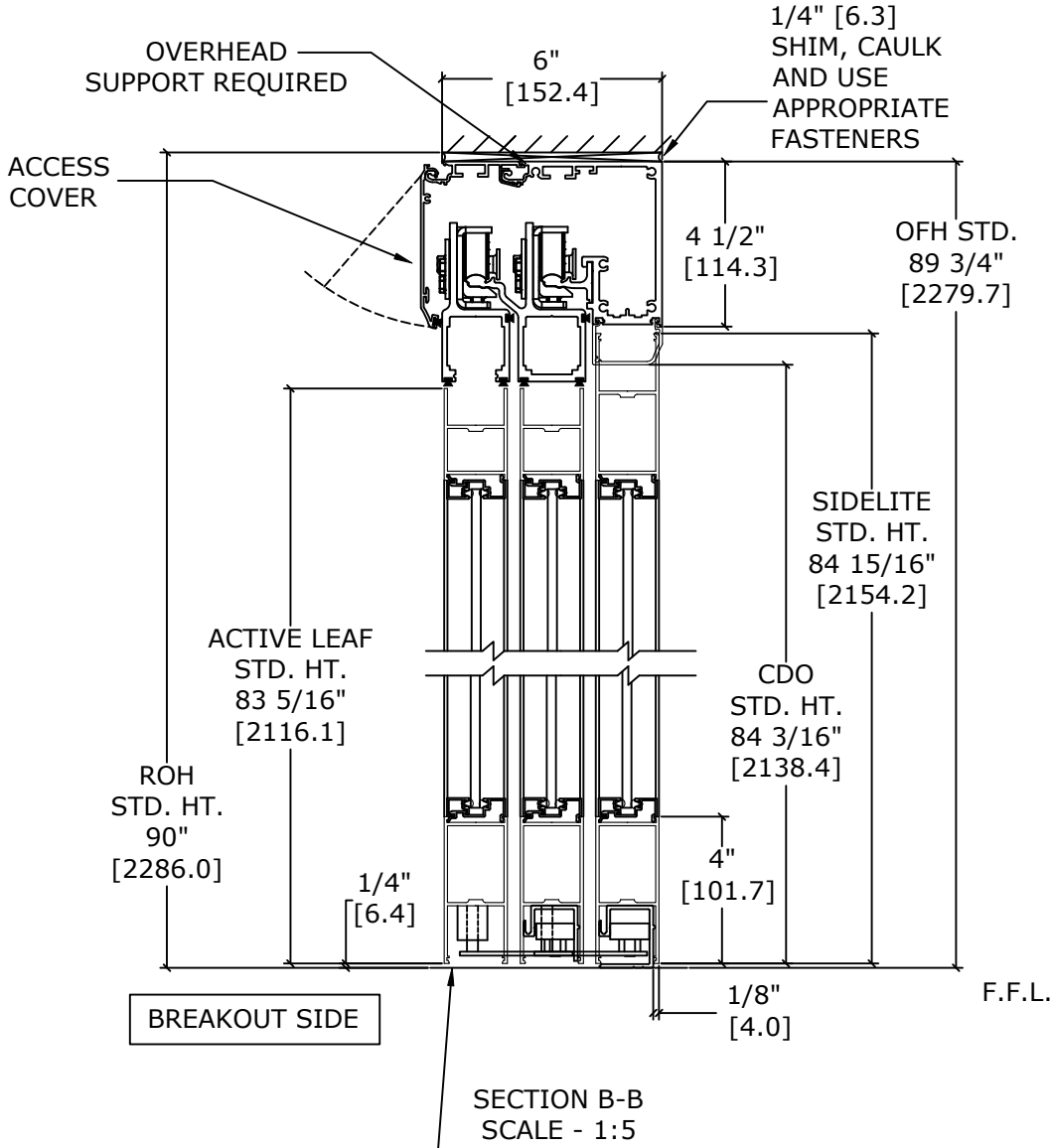
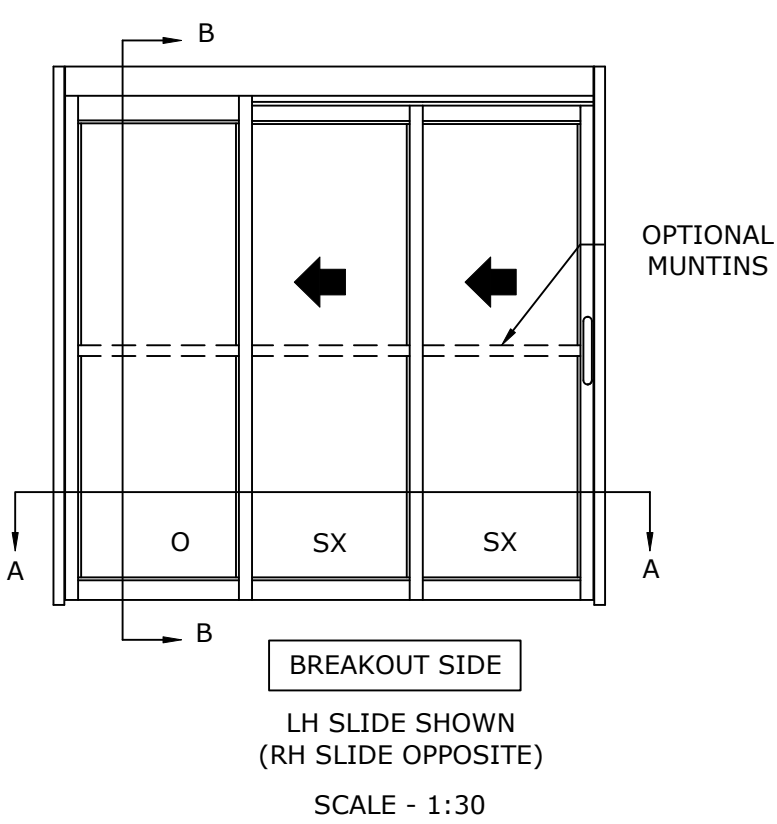


ASSA ABLOY VERSAMAX ICU

OVERHEAD CONCEALED FIXED SIDELITE TRACKLESS
NARROW STILE TELESCOPIC EQUAL PANEL SLIDING DOOR SYSTEM



FINISHED FLOOR
MUST NOT BE
CONCAVE ACROSS
THE CLEAR
DOOR OPENING
AND NOT OUT OF
LEVEL MORE THAN 1/8"

NOTES:

STANDARD PACKAGE CONSISTS OF:

- STANDARD FINISH:
CLASS 1, .018MM, CLEAR- AA-M12C22A41
- NARROW STILE RAILS
- 1/4" GLASS STOPS AND BLOCKS
- PULL HANDLE(S) AND RECESSED FINGER PULL(S)
- NURSE ASSIST MAGNETIC CATCHES
- FULL OPENING DAMPENING DEVICE

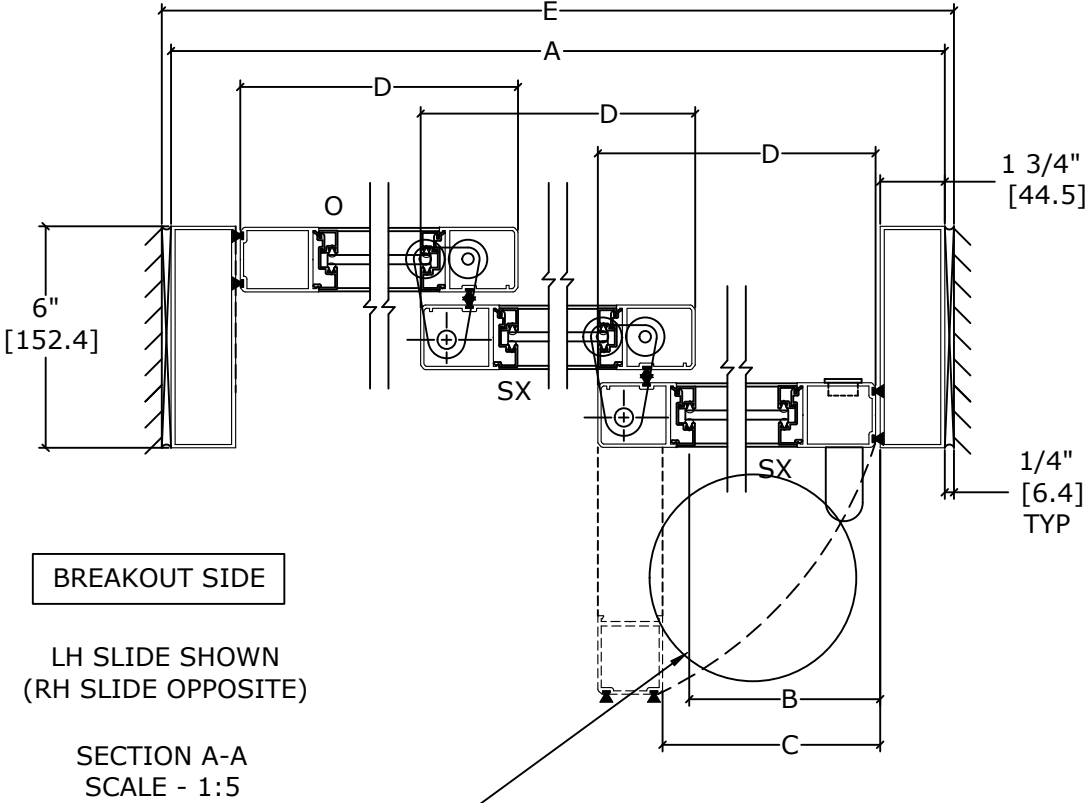
OPTIONS AVAILABLE:

- SPECIAL FINISHES
- PACKAGE WILL ACCEPT UP TO 1 1/4" [31.8]
INSULATED GLASS, SEE SHEET AA-13 FOR DETAILS
- 7" & 10" BOTTOM RAILS, SEE SHEET AA-14 FOR DETAILS
- MUNTINS, SEE SHEET AA-14 FOR DETAILS
- SEE SHEET OS-1 FOR ALL OTHER OPTIONS.

DIMENSIONS FOR 1/4" [6.4] GLASS

MODEL NO.	OVERALL FRAME WIDTH (A)	CLEAR DOOR OPENING (B)	BREAKOUT OPENING (C)	ACTIVE & SIDELITE LEAF WIDTH (D)	ROUGH OPENING WIDTH (E)
VMT3FSLT-8	96" [2438.4]	53 3/4" [1365.3]	56 1/4" [1428.8]	32 1/2" [825.5]	96 1/2" [2451.1]
VMT3FSLT-10	120" [3048.0]	69 3/4" [1771.7]	72 1/4" [1835.2]	40 1/2" [1028.7]	120 1/2" [3060.7]
VMT3FSLT-12	144" [3657.6]	85 3/4" [2178.1]	88 1/4" [2241.6]	48 1/2" [1231.9]	144 1/2" [3670.3]
KEY:		(2*A/3)-10 1/4" (2*A/3)-[260.4]	(2*A/3)- 7 3/4" (2*A/3)-[196.9]	(A/3)+ 1/2" (A/3)+[12.7]	A+1/2" A+[12.7]

CONSULT FACTORY FOR ALL CUSTOM CONFIGURATION SIZES OR SIZES OVER 12'.



- DOORS WILL BREAK OUT IN ANY POSITION

REFER TO RELEVANT [LOCAL, STATE, NATIONAL,
OR AHJ] BUILDING CODE FOR MIN DOOR HEIGHT
& MIN/MAX WIDTH ALLOWABLE FOR EGRESS
REQUIREMENT IN CONJUNCTION WITH TABLE.

FINISHED
FLOOR
MUST NOT BE
AN INCREASE
IN ELEVATION
THROUGH
BREAKOUT
DOOR(S)
PATH

DWG NO.	1016221										
DRN BY	DBN	DATE	10/16/18	CHK BY	CLW	DATE	10/16/18	REV.	4.0	DATE	01/20/22
<div>ASSA ABLOY</div>											