

ASSA ABLOY

ASSA ABLOY ENTRANCE SYSTEMS  
1900 AIRPORT ROAD  
MONROE, NC 28110  
PHONE: 1-866-237-2687  
SPECDESK.NA.ENTRANCE@ASSAABLOY.COM

## ASSA ABLOY VERSAMAX ICU

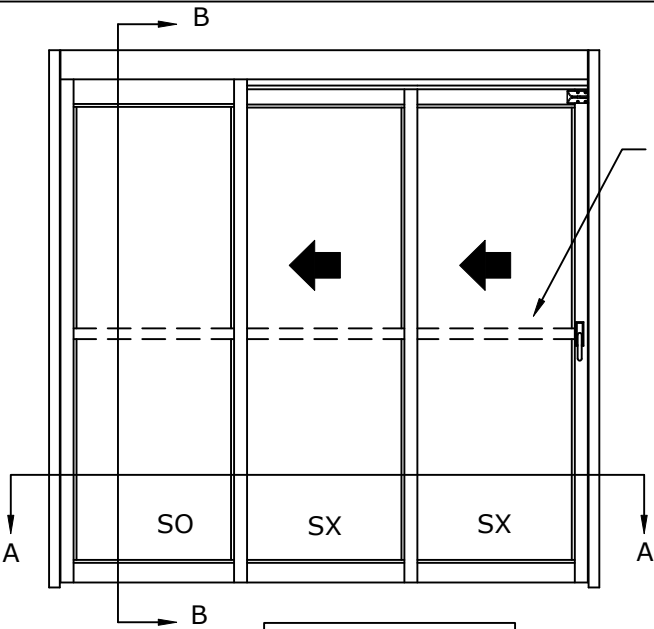
OVERHEAD CONCEALED FULL BREAKOUT TRACKLESS  
UL 1784 SMOKE CERTIFIED NARROW STILE TELESCOPIC EQUAL PANEL  
SLIDING DOOR SYSTEM

U.S. PATENT  
8,096,342 B2

DIMENSIONS FOR 1/4" [6.4] GLASS

MODEL NO.	OVERALL FRAME WIDTH (A)	CLEAR DOOR OPENING (B)	BREAKOUT OPENING (C)	ACTIVE & SIDELITE LEAF WIDTH (D)	ROUGH OPENING WIDTH (E)
VMT3FBO-8	96" [2438.4]	53 3/4" [1365.3]	81 1/2" [2070.1]	32 1/2" [825.5]	96 1/2" [2451.1]
VMT3FBO-10	120" [3048.0]	69 3/4" [1771.7]	105 1/2" [2679.7]	40 1/2" [1028.7]	120 1/2" [3060.7]
VMT3FBO-12	144" [3657.6]	85 3/4" [2178.1]	129 1/2" [3289.3]	48 1/2" [1231.9]	144 1/2" [3670.3]
KEY:		(2*A/3)-10 1/4" (2*A/3)-[260.4]	A-14 1/2" A-[368.3]	(A/3)+ 1/2" (A/3)+[12.7]	A+1/2" A+[12.7]

CONSULT FACTORY FOR ALL CUSTOM CONFIGURATION SIZES OR SIZES OVER 12'.



BREAKOUT SIDE

LH SLIDE SHOWN  
(RH SLIDE OPPOSITE)

SCALE - 1:30

\* SEALS: FACTORY APPLIED SEALS USED ON THIS SYSTEM TO SLOW OR RESTRICT PASSAGE OF SMOKE COMPLIES TO ONE OR MORE OF THE FOLLOWING REQUIREMENTS:  
UL1784, ANSI/NFPA105 2007, UBC7-2, PART11, B5476, UL10B, UL10C, UBC7-2 PART 1 & B5476.

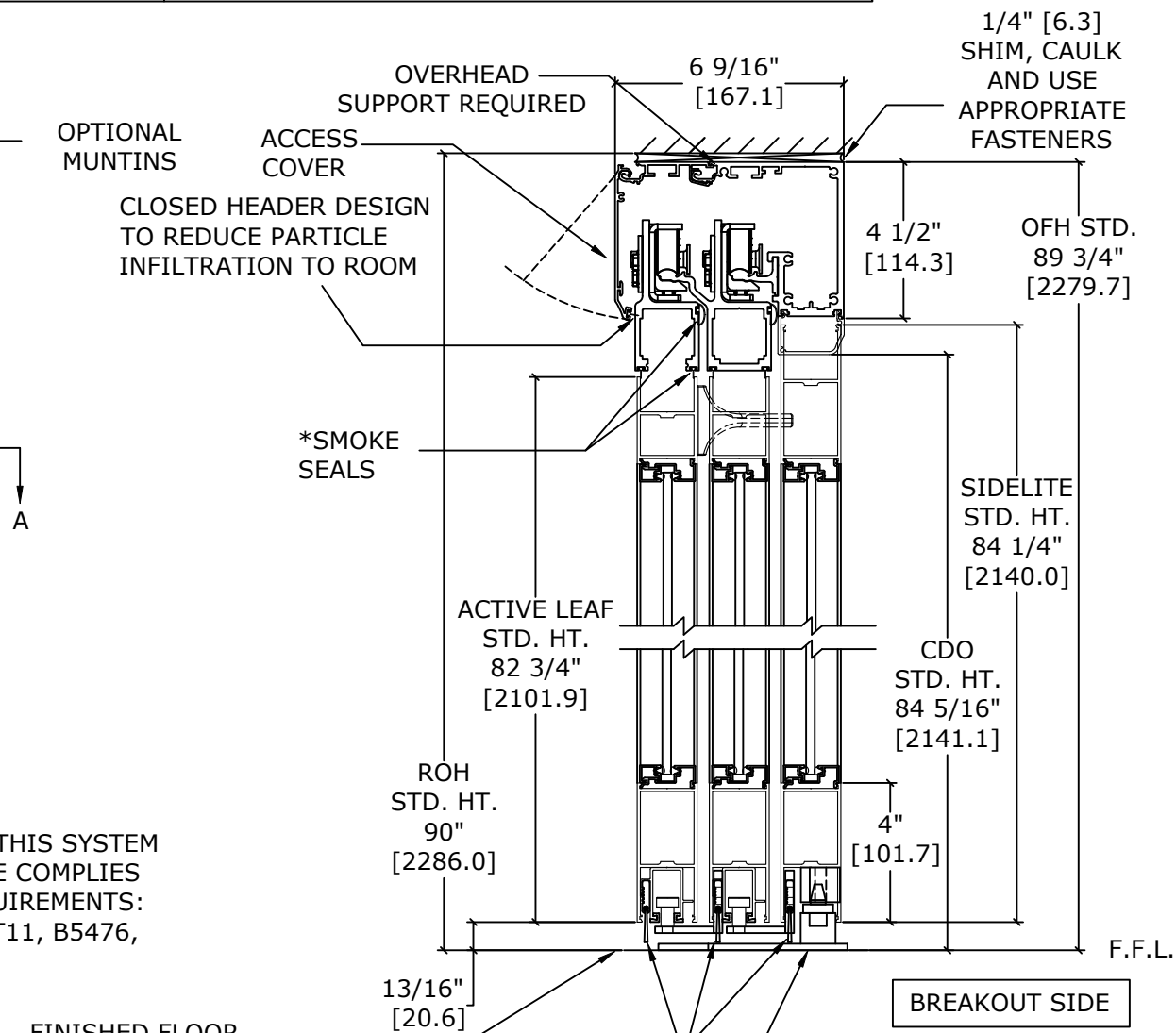
### NOTES:

STANDARD PACKAGE CONSISTS OF:

- STANDARD FINISH:  
CLASS 1, .018MM, CLEAR- AA-M12C22A41
- NARROW STILE RAILS
- 1/4" GLASS STOPS AND BLOCKS
- NURSE ASSIST MAGNETIC CATCHES
- POSITIVE LATCHING,
- CONCEALED SWEEPS
- SMOKE RATED SEALS
- FLUSH BOLT-FREE DESIGN

OPTIONS AVAILABLE:

- SPECIAL FINISHES
- PACKAGE WILL ACCEPT UP TO 1 1/4" [31.8]  
INSULATED GLASS, SEE SHEET AA-13 FOR DETAILS
- 7" & 10" BOTTOM RAILS, SEE SHEET AA-14 FOR DETAILS
- MUNTINS, SEE SHEET AA-14 FOR DETAILS
- SELF-CLOSING, SEE SHEET AA-2 FOR DETAILS
- SEE SHEET OS-1 FOR ALL OTHER OPTIONS.

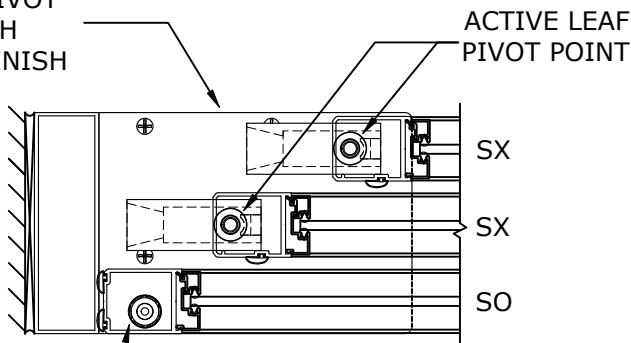


BREAKOUT SIDE

SECTION B-B  
SCALE - 1:5

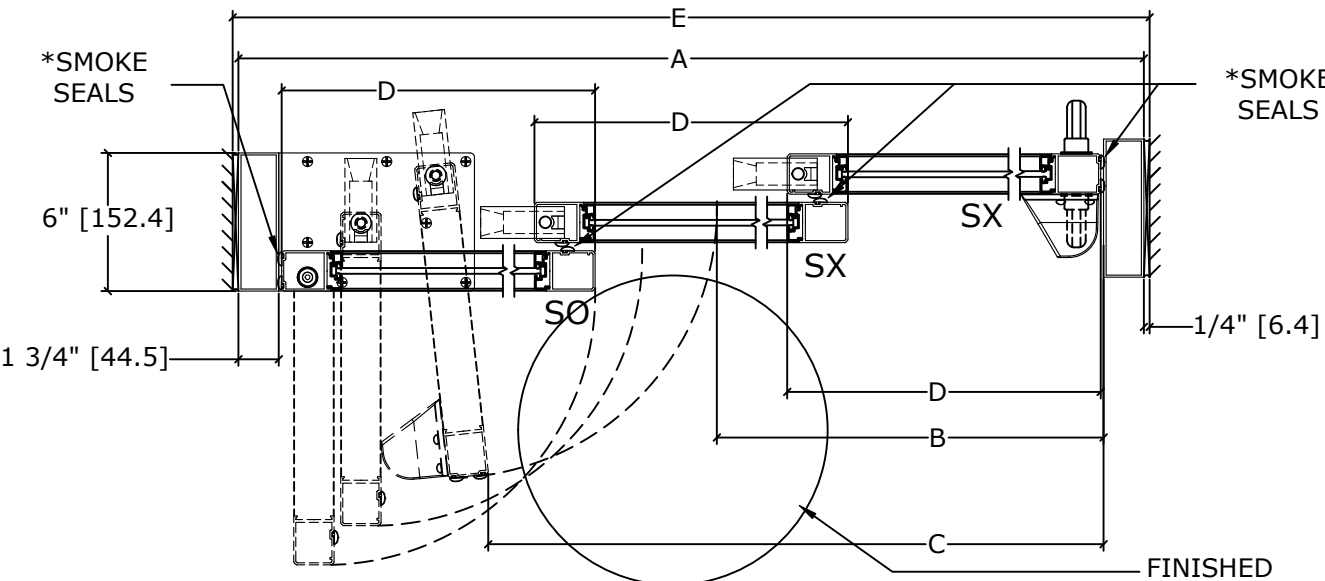
FINISHED FLOOR  
MUST NOT BE  
CONCAVE ACROSS  
THE CLEAR  
DOOR OPENING  
AND NOT OUT OF  
LEVEL MORE THAN 1/8"

ALL STEEL  
CONSTRUCTION  
TRACKLESS PIVOT  
PLATE WITH  
CLEAR ZINC FINISH



BREAKOUT SIDE

DETAIL C  
SCALE - 1:5



BREAKOUT SIDE

LH SLIDE SHOWN  
(RH SLIDE OPPOSITE)

SECTION A-A  
SCALE - 1:10

- DOORS WILL ONLY BREAK OUT WHEN  
IN THE FULLY OPEN POSITION.

FINISHED  
FLOOR  
MUST NOT BE  
AN INCREASE  
IN ELEVATION  
THROUGH  
BREAKOUT  
DOOR(S)  
PATH

FLUSH  
STAINLESS STEEL  
LATCH STRIKE  
WITH INTERNAL  
DUST CAP

SINGLE SLIDE  
RECEIVER JAMB

REFER TO RELEVANT [LOCAL, STATE, NATIONAL,  
OR AHJ] BUILDING CODE FOR MIN DOOR HEIGHT  
& MIN/MAX WIDTH ALLOWABLE FOR EGRESS  
REQUIREMENT IN CONJUNCTION WITH TABLE.

DWG NO. 1016214											
DRN BY	DBN	DATE	10/16/18	CHK BY	CLW	DATE	10/16/18	REV.	4.0	DATE	01/19/22

ASSA ABLOY