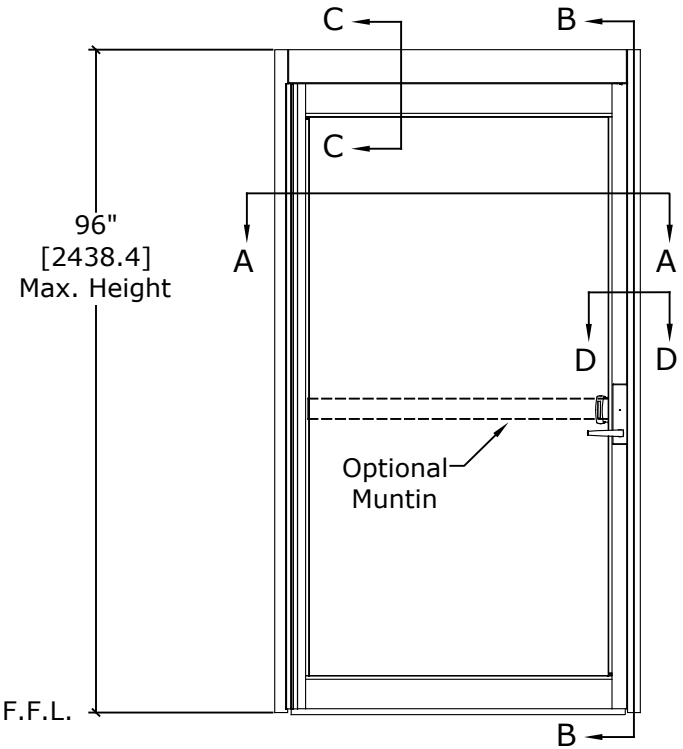


ASSA ABLOY VERSAMAX ICU

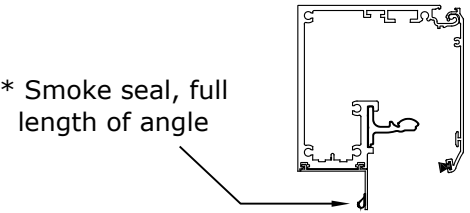
SINGLE PANEL UL 1784 SMOKE CERTIFIED
MANUAL SWING DOOR SYSTEM

DIMENSIONS FOR 1/4" [6.4] GLASS

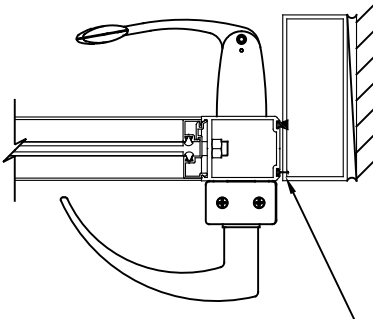
MODEL NO.	ROUGH OPENING WIDTH (A)	OVERALL FRAME WIDTH (B)	CLEAR DOOR OPENING (C)	ACTIVE WIDTH (D)
VMSWS-3-4	40" [1016.0]	39 1/2" [1003.3]	33 1/2" [850.9]	36" [914.4]
VMSWS-3-10	46" [1168.4]	45 1/2" [1155.7]	39 1/2" [1003.3]	42" [1066.8]
VMSWS-4-4	52" [1320.8]	51 1/2" [1308.1]	45 1/2" [1155.7]	48" [1219.2]



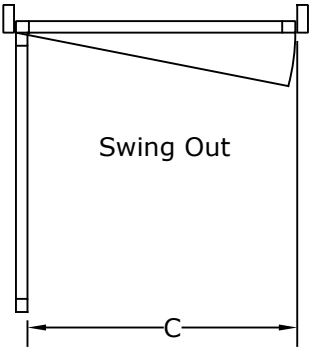
RH Single Panel Shown
(LH Opposite)



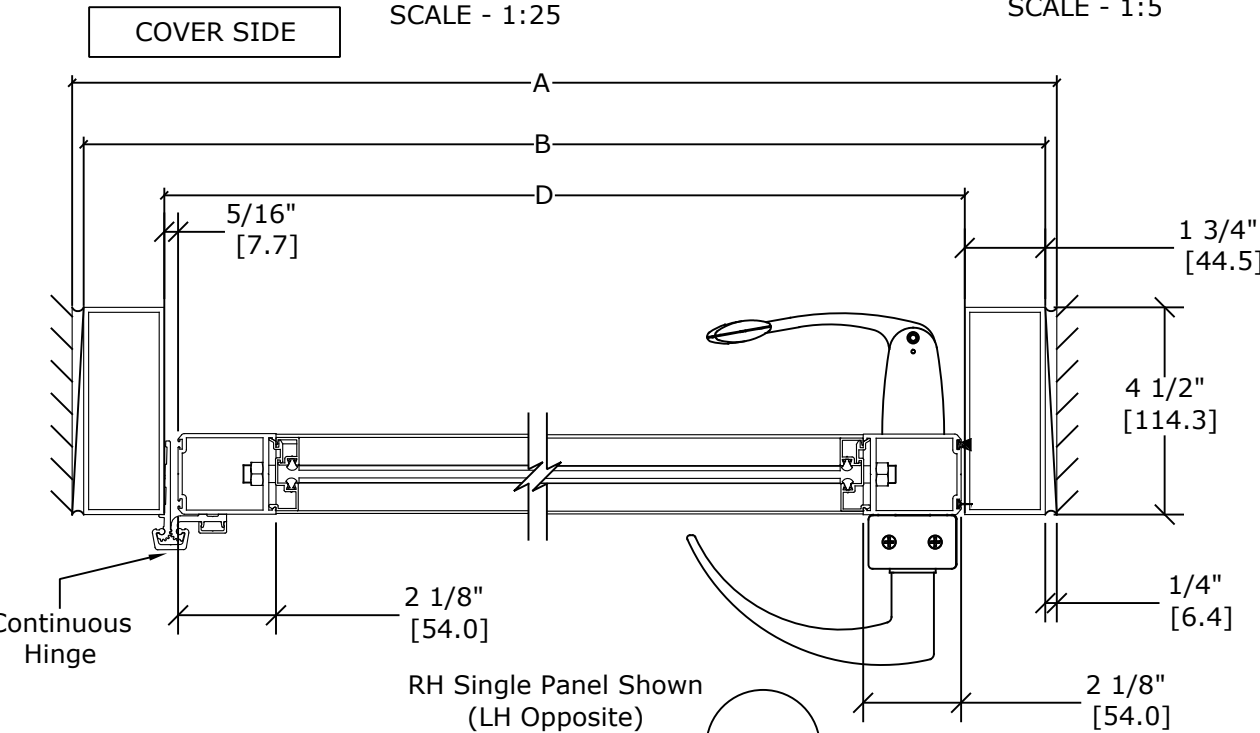
SECTION C-C
SCALE - 1:5



SECTION D-D
SCALE - 1:5



TOP VIEW
SCALE - 1:30

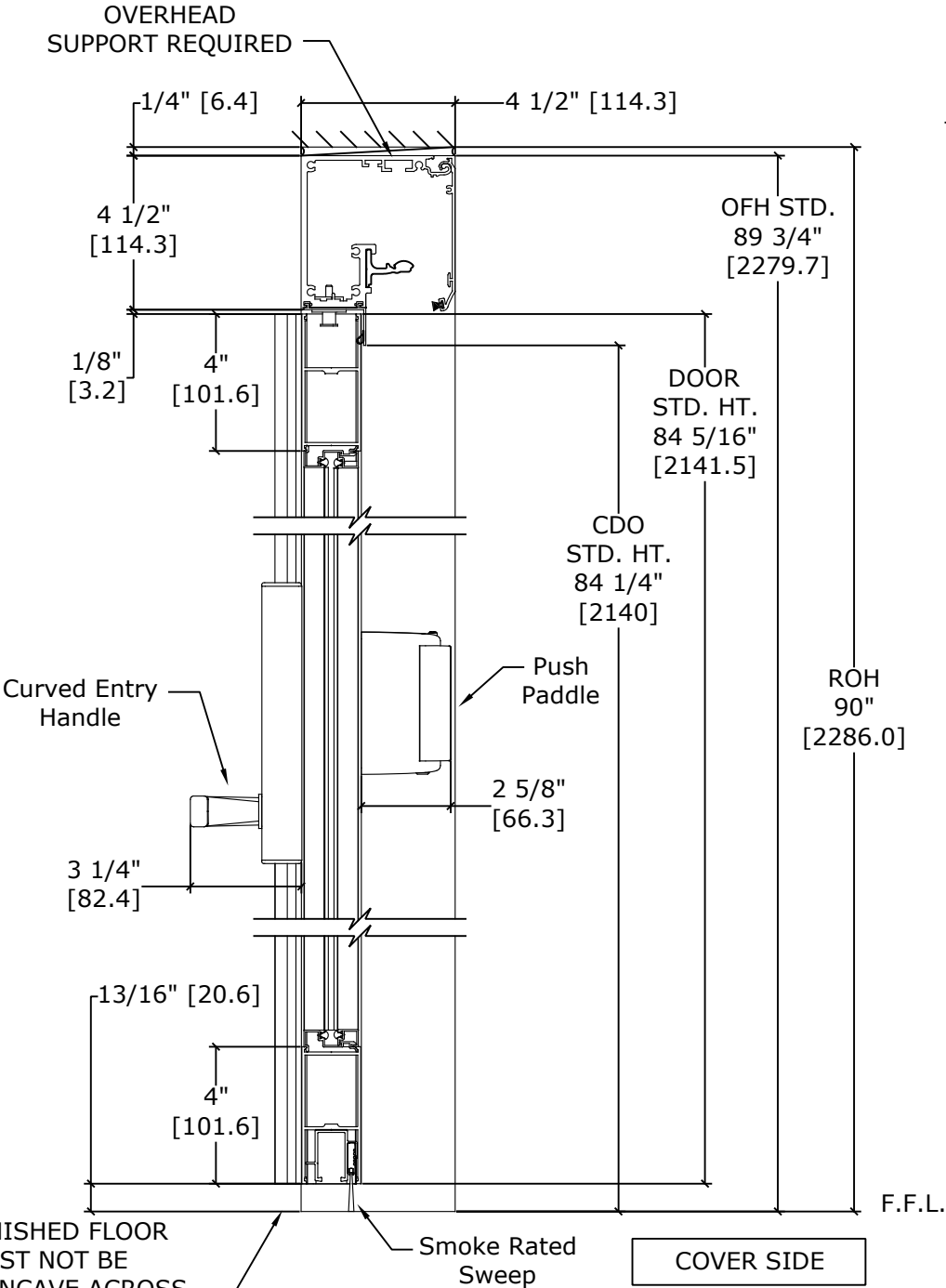


RH Single Panel Shown
(LH Opposite)

SECTION A-A
SCALE - 1:4

* SEALS: FACTORY APPLIED SEALS USED ON THIS SYSTEM TO SLOW OR RESTRICT PASSAGE OF SMOKE COMPLIES TO ONE OR MORE OF THE FOLLOWING REQUIREMENTS: UL1784, ANSI/NFPA105 2007, UBC7-2, PART11, B5476, UL10B, UL10C, UBC7-2 PART 1 & B5476.

FINISHED FLOOR MUST NOT BE AN INCREASE IN ELEVATION THROUGH DOOR(S) PATH



FINISHED FLOOR MUST NOT BE CONCAVE ACROSS THE CLEAR DOOR OPENING AND NOT OUT OF LEVEL MORE THAN 1/8"

SECTION B-B
SCALE - 1:5

NOTES

THE STANDARD PACKAGE CONSISTS OF:

- ICU HEADER
- NARROW STILE RAILS
- 1/4" GLASS STOPS AND BLOCKS
- DOOR PANEL WITH A CURVED HANDLE TO THE EXTERIOR AND PUSH PADDLE TO THE INTERIOR
- CONTINUOUS HINGES
- SMOKE RATED SEALS AND SWEEPS
- STANDARD FINISH: CLASS 1, .018MM, CLEAR- AA-M12C22A41

OPTIONS INCLUDE:

- SPECIAL FINISHES
- MUNTINS, SEE SHEET AA-14 FOR DETAILS
- MEDIUM STILE CONSTRUCTION
- 7" AND 10" BOTTOM RAILS, SEE SHEET AA-14 FOR DETAILS
- PACKAGE WILL ACCEPT UP TO 1 1/4" [31.8] INSULATED GLASS, SEE SHEET AA-13 FOR DETAILS
- LOW PROFILE HEADER, SEE SHEET AA-19 FOR DETAILS
- SEE SHEET OS-4 FOR ALL OTHER OPTIONS.

REFER TO RELEVANT [LOCAL, STATE, NATIONAL, OR AHJ] BUILDING CODE FOR MIN DOOR HEIGHT & MIN/MAX WIDTH ALLOWABLE FOR EGRESS REQUIREMENT IN CONJUNCTION WITH TABLE.

DWG NO. 1016231											
DRN BY	DBN	DATE	10/25/18	CHK BY	CLW	DATE	10/25/18	REV.	3.0	DATE	01/20/22