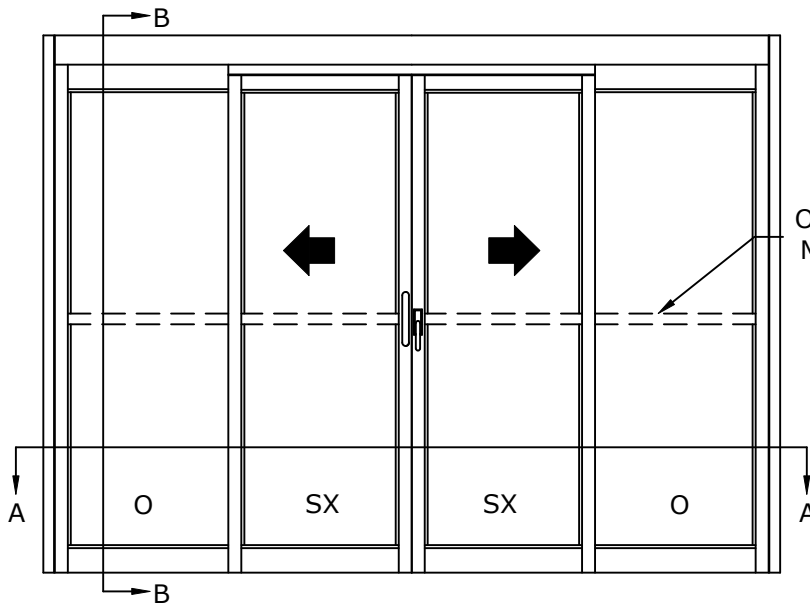


# ASSA ABLOY VERSAMAX ICU

OVERHEAD CONCEALED FIXED SIDELITE TRACKLESS  
UL 1784 SMOKE CERTIFIED NARROW STILE BI-PART SLIDING  
DOOR SYSTEM



BREAKOUT SIDE

SCALE - 1:30

\* SEALS: FACTORY APPLIED SEALS USED ON THIS SYSTEM TO SLOW OR RESTRICT PASSAGE OF SMOKE COMPLIES TO ONE OR MORE OF THE FOLLOWING REQUIREMENTS: UL1784, ANSI/NFPA105 2007, UBC7-2, PART11, B5476, UL10B, UL10C, UBC7-2 PART 1 & B5476.

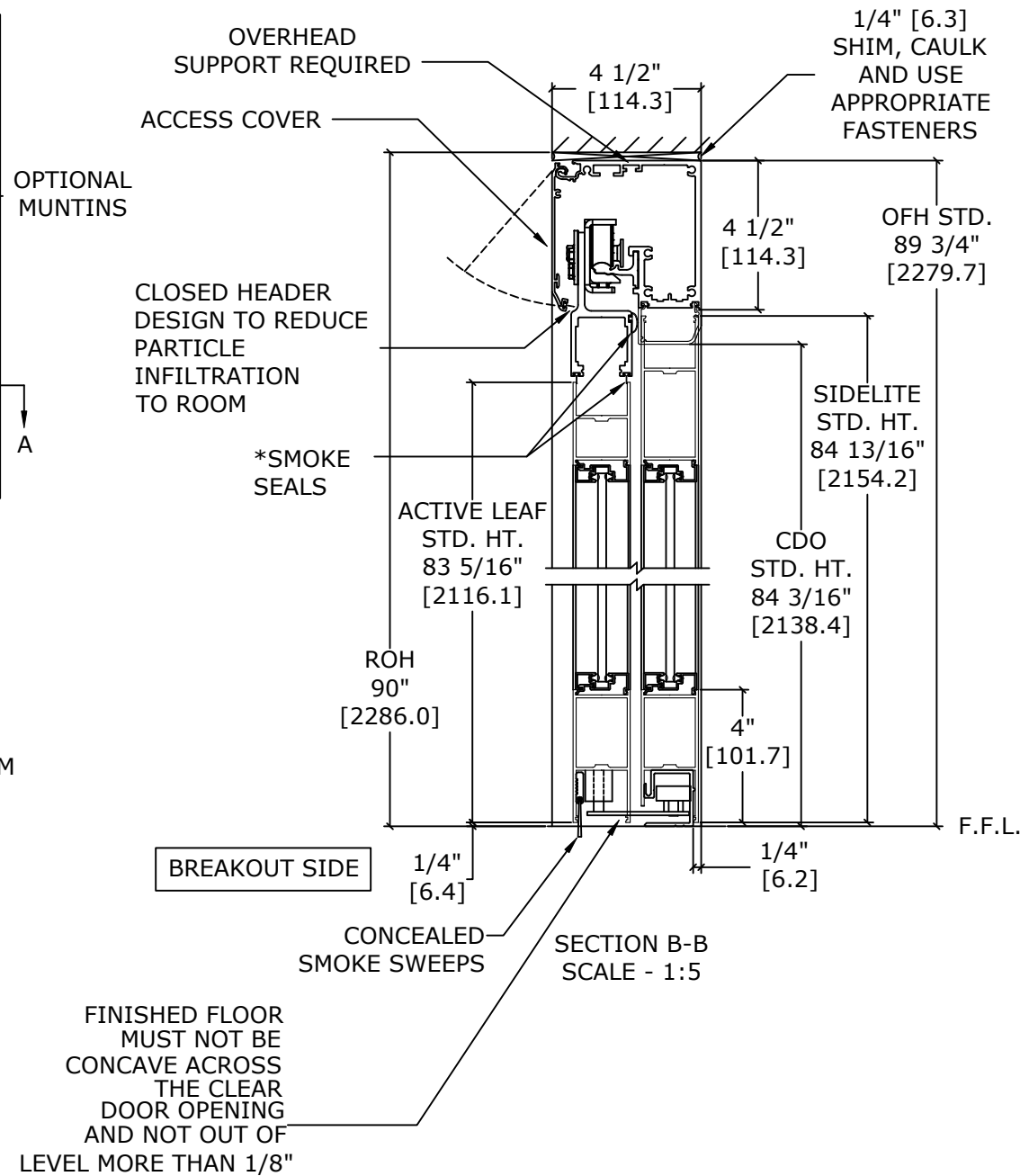
NOTES:

STANDARD PACKAGE CONSISTS OF:

- STANDARD FINISH:  
CLASS 1, .018MM, CLEAR- AA-M12C22A41
- NARROW STILE RAILS
- 1/4" GLASS STOPS AND BLOCKS
- NURSE ASSIST MAGNETIC CATCHES
- POSITIVE LATCHING
- CONCEALED SWEEPS
- SMOKE RATED SEALS

OPTIONS AVAILABLE:

- SPECIAL FINISHES
- PACKAGE WILL ACCEPT UP TO 1 1/4" [31.8] INSULATED GLASS, SEE SHEET AA-13 FOR DETAILS
- 7" & 10" BOTTOM RAILS, SEE SHEET AA-14 FOR DETAILS
- MUNTINS, SEE SHEET AA-14 FOR DETAILS
- SELF-CLOSING, SEE SHEET AA-2 FOR DETAILS
- SEE SHEET OS-1 FOR ALL OTHER OPTIONS.



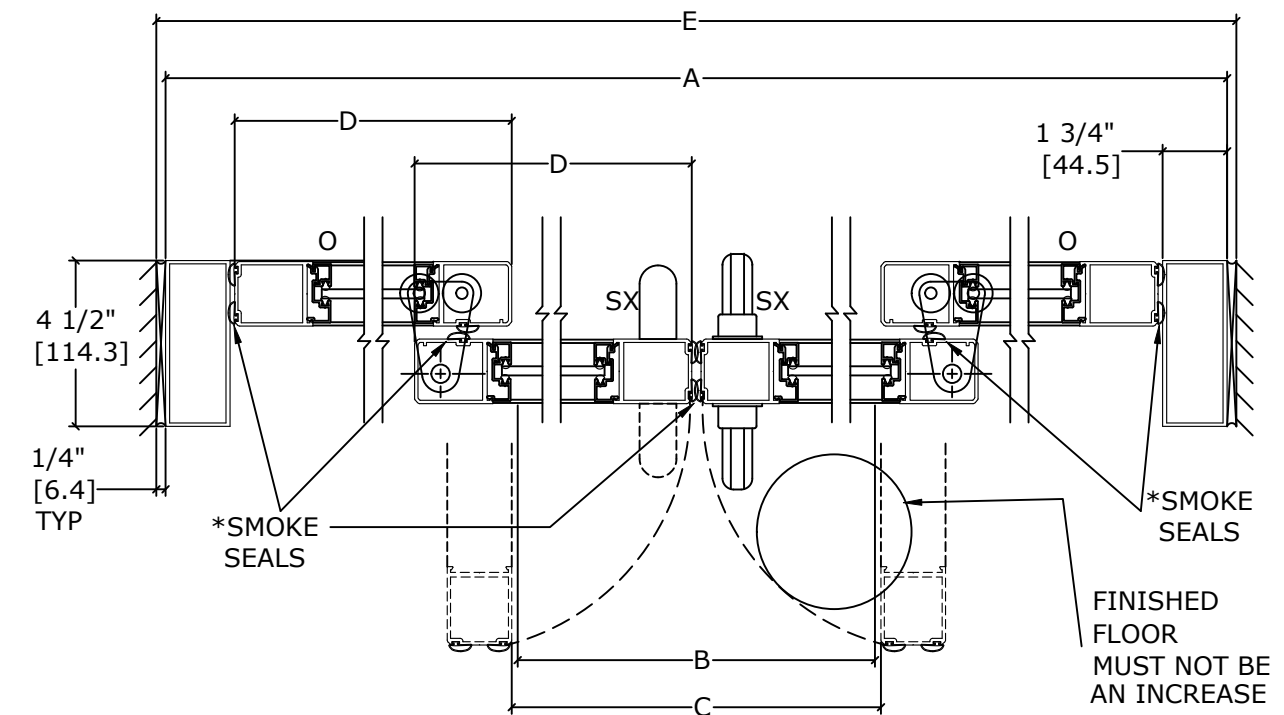
BREAKOUT SIDE

SECTION B-B  
SCALE - 1:5

FINISHED FLOOR  
MUST NOT BE  
CONCAVE ACROSS  
THE CLEAR  
DOOR OPENING  
AND NOT OUT OF  
LEVEL MORE THAN 1/8"

MODEL NO.	OVERALL FRAME WIDTH (A)	CLEAR DOOR OPENING WIDTH (B)	BREAKOUT OPENING (C)	ACTIVE & SIDELITE LEAF WIDTH (D)	ROUGH OPENING WIDTH (E)
VMS4FSL-10	120" [3048.0]	48 7/8" [1241.4]	55 5/8" [1412.9]	30 5/16" [769.9]	120 1/2" [3060.7]
VMS4FSL-12	144" [3657.6]	60 7/8" [1546.2]	67 5/8" [1717.7]	36 5/16" [922.3]	144 1/2" [3670.3]
VMS4FSL-14	168" [4267.2]	72 7/8" [1851.0]	79 5/8" [2022.5]	42 5/16" [1074.7]	168 1/2" [4279.9]
VMS4FSL-16	192" [4876.8]	84 7/8" [2155.8]	91 5/8" [2327.3]	48 5/16" [1227.1]	192 1/2" [4889.5]
KEY:		(A/2)-11 1/8" (A/2)-[282.6]	(A/2)- 4 3/8" (A/2)- [111.1]	(A/4)+5/16" (A/4)+[7.9]	A+1/2" A+[12.7]

CONSULT FACTORY FOR ALL CUSTOM CONFIGURATION SIZES.



- DOORS WILL BREAK OUT IN ANY POSITION

FINISHED  
FLOOR  
MUST NOT BE  
AN INCREASE  
IN ELEVATION  
THROUGH  
BREAKOUT  
DOOR(S)  
BATH

BREAKOUT SIDE

SECTION A-A  
SCALE - 1:5

REFER TO RELEVANT [LOCAL, STATE, NATIONAL, OR AHJ] BUILDING CODE FOR MIN DOOR HEIGHT & MIN/MAX WIDTH ALLOWABLE FOR EGRESS REQUIREMENT IN CONJUNCTION WITH TABLE.

DWG NO.		1016210									
DRN BY	DBN	DATE	10/16/18	CHK BY	CLW	DATE	10/16/18	REV.	3.0	DATE	10/16/18
<div></div> <div></div> <div></div> <div></div>											
<div>ASSA ABLOY</div>						<div></div> <div></div> <div></div> <div></div>					