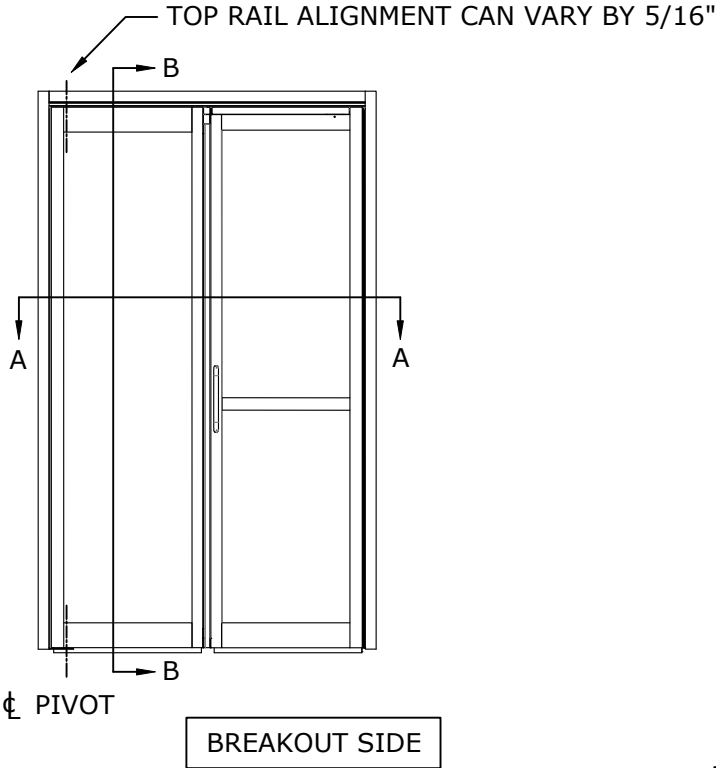


DIMENSIONS FOR 1/4" [6.4] GLASS

MODEL NO.	ROUGH OPENING WIDTH (A)	OVERALL FRAME WIDTH (B)	CLEAR DOOR OPENING (C)	DOOR WIDTH (D)
VMF2-3-5	41" [1041.4]	40 1/2" [1028.7]	30 7/8" [784.2]	36 5/8" [930.3]
VMF2-6	72 5/16" [1836.7]	71 13/16" [1824.0]	62 3/16" [1579.6]	67 15/16" [1725.6]
KEY:	B+1/2" B+[12.7]	A-1/2" A-[12.7]	B-9 5/8" B-[244.5]	B-3 7/8" B-[98.4]

- MAX WEIGHT FOLD DOOR - 170 lbs
INSULATED GLASS NOT TO EXCEED 1/8" PANES

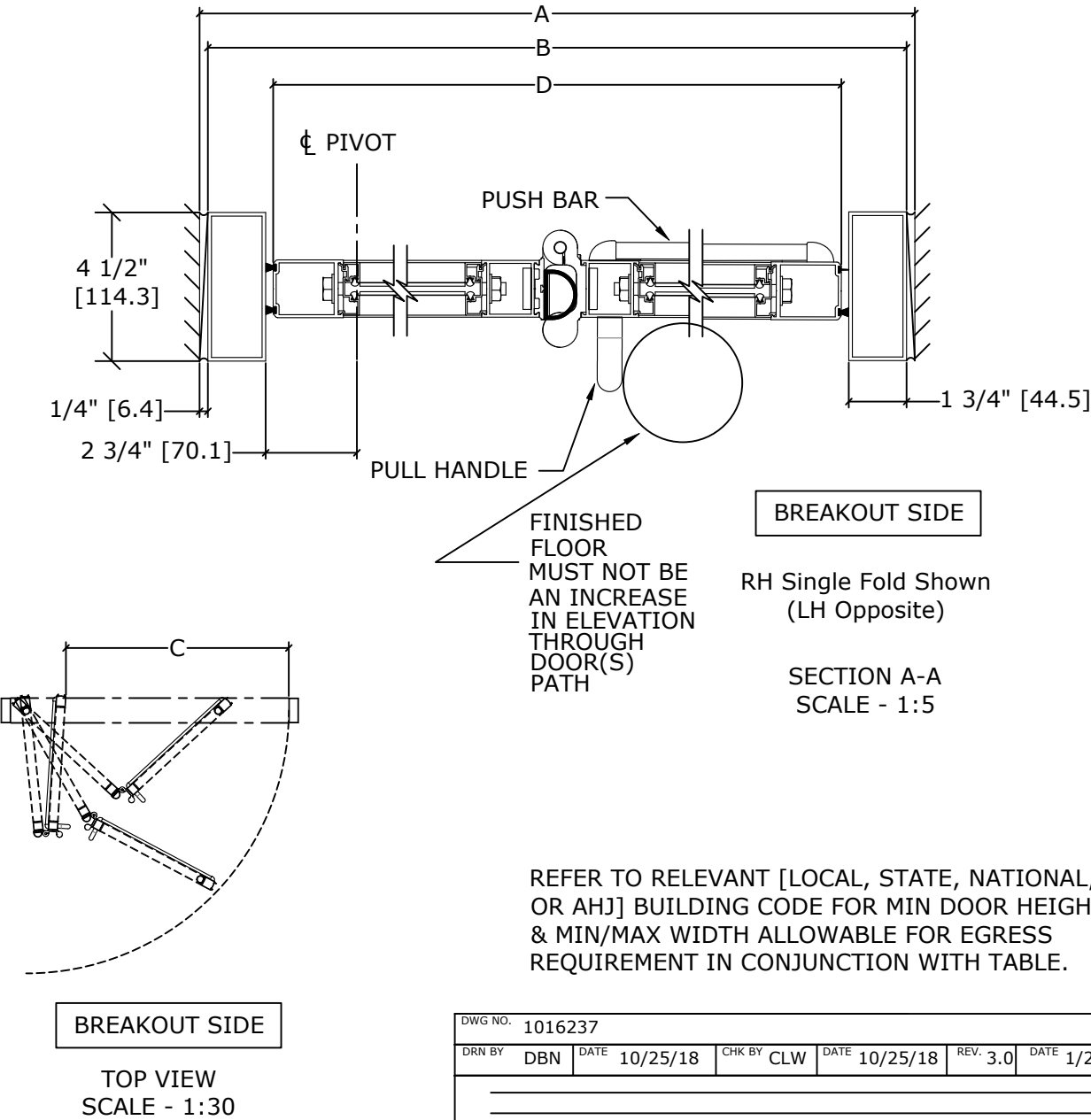
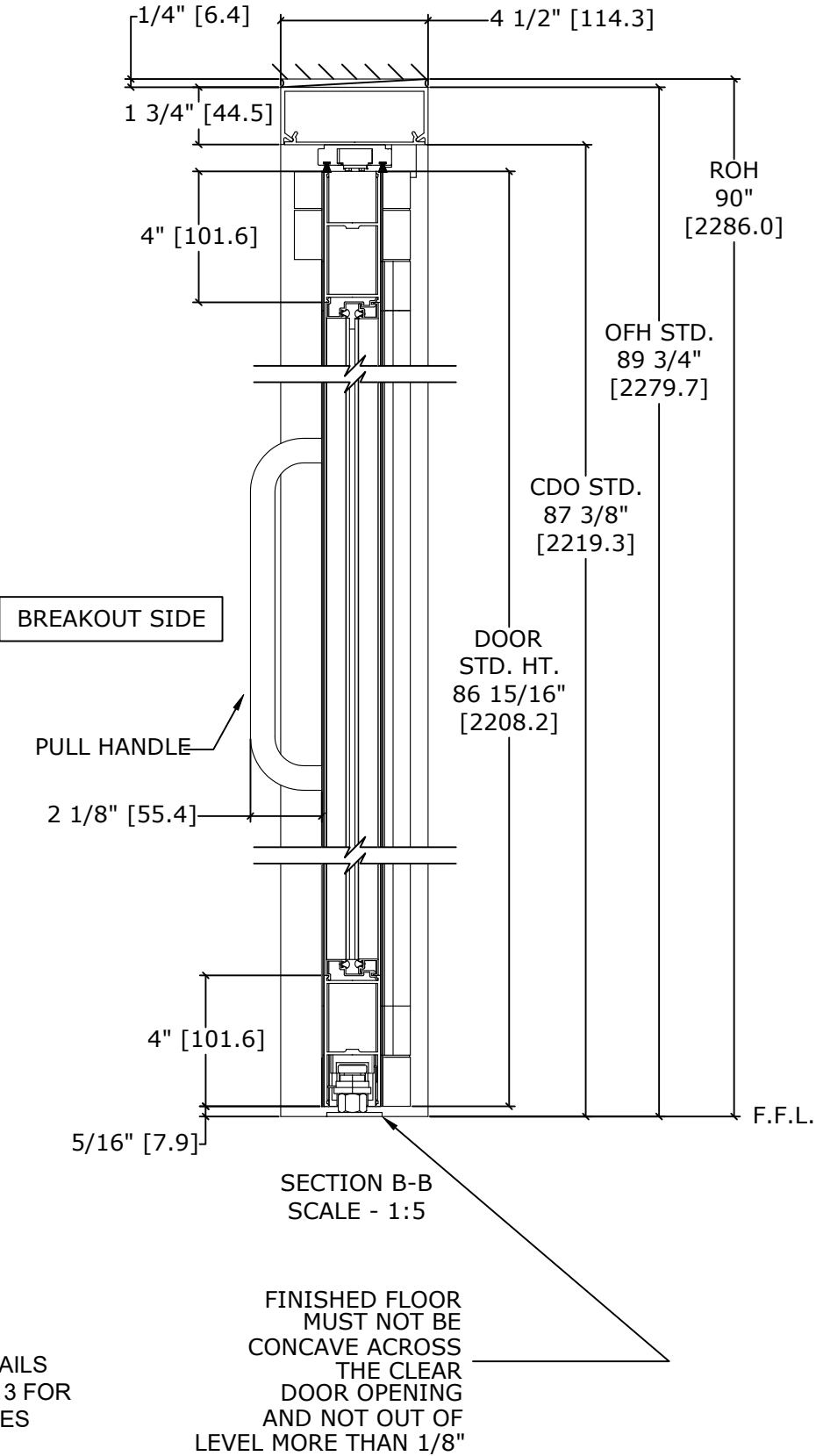


RH Single Fold Shown
(LH Opposite)
SCALE - 1:30

NOTES

- THE STANDARD PACKAGE CONSISTS OF:
- ICU HEADER
 - FRAMES
 - 1/4" GLASS STOPS AND BLOCKS
 - A FOLD DOOR PANEL WITH A PULL "C" HANDLE TO THE EXTERIOR AND PUSH BAR TO THE INTERIOR
 - STANDARD FINISH:
CLASS 1, .018MM, CLEAR- AA-M12C22A41

- OPTIONS INCLUDE:
- SPECIAL FINISHES
 - *** SMOKE SEALS
 - MUNTINS, SEE SHEET AA-14 FOR DETAILS
 - 7" AND 10" BOTTOM RAILS, SEE SHEET AA-14 FOR DETAILS
 - 5/8", 1", AND 1 1/4" INSULATED GLASS, SEE SHEET AA-13 FOR DETAILS. INSULATED GLASS NOT TO EXCEED 1/8" PANES
 - SEE SHEET OS-3 FOR ALL OTHER OPTIONS.



REFER TO RELEVANT [LOCAL, STATE, NATIONAL, OR AHJ] BUILDING CODE FOR MIN DOOR HEIGHT & MIN/MAX WIDTH ALLOWABLE FOR EGRESS REQUIREMENT IN CONJUNCTION WITH TABLE.

DWG NO.		1016237																					
DRN BY		DBN		DATE		10/25/18		CHK BY		CLW		DATE		10/25/18		REV.		3.0		DATE		1/20/22	
<div></div> <div></div> <div></div> <div></div>																							
<div>ASSA ABLOY</div>												<div></div> <div></div> <div></div>											