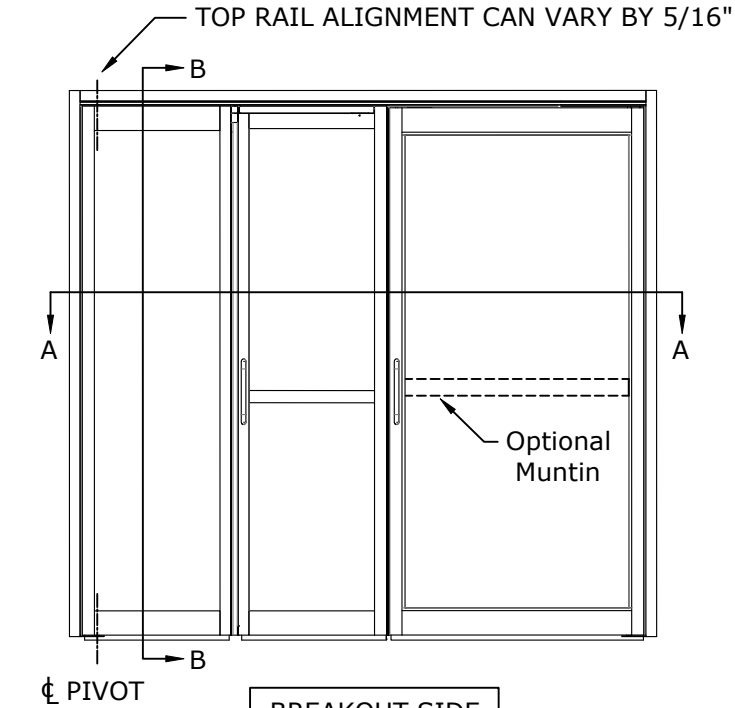


DIMENSIONS FOR 1/4" [6.4] GLASS

MODEL NO.	ROUGH OPENING WIDTH (A)	OVERALL FRAME WIDTH (B)	CLEAR DOOR OPENING (C)	FOLD DOOR CDO (D)	SWING DOOR CDO (E)	FOLD DOOR WIDTH (F)	SWING DOOR WIDTH (G)
VMF2-5-6	65 3/4" [1670.1]	65 1/4" [1657.4]	51 7/8" [1317.6]	19" [482.6]	32 5/16" [820.7]	25 3/16" [639.8]	36" [914.4]
VMF2-10	120 1/2" [3060.7]	120" [3048.0]	106 5/8" [2708.3]	61 3/4" [1568.5]	44 5/16" [1125.5]	67 15/16" [1725.6]	48" [1219.2]
KEY:	B+1/2" B+[12.7]	A-1/2" A-[12.7]	D+E	F-6 3/16" F-[157.2]	G-3 11/16" G-[93.7]	B-G- 4 1/16" B-G-[103.8]	

- MAX WEIGHT SWING DOOR - 115 lbs
MAX WEIGHT FOLD DOOR - 170 lbs
INSULATED GLASS NOT TO EXCEED 1/8" PANES



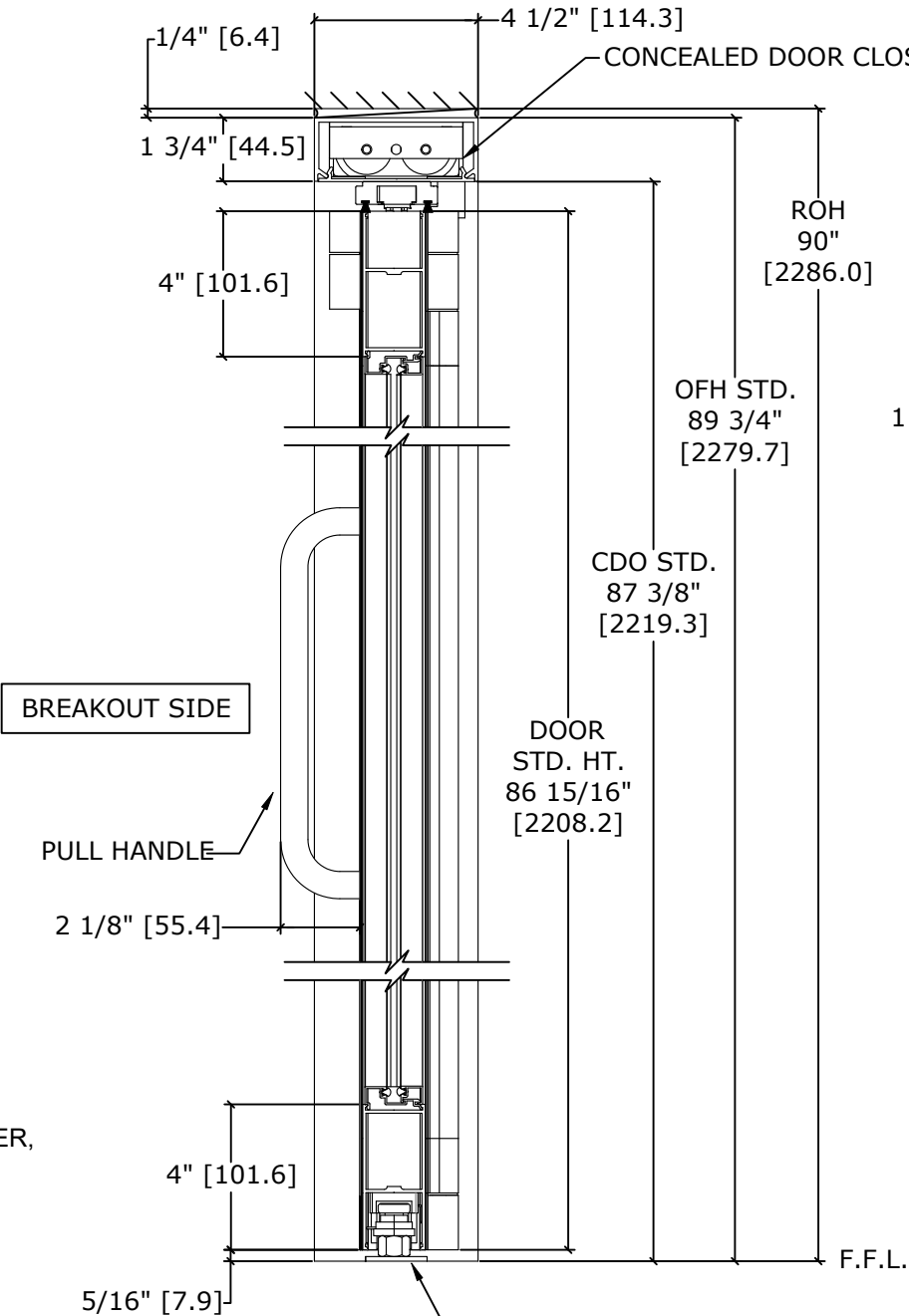
RH Fold and Swing Shown
(LH Opposite)

SCALE - 1:30

NOTES

- THE STANDARD PACKAGE CONSISTS OF:
- ICU HEADER
 - FRAMES
 - 1/4" GLASS STOPS AND BLOCKS
 - SWING DOOR PANEL WITH PULL "C" HANDLES TO THE EXTERIOR AND TO THE INTERIOR, SEE SHEET AA-7 FOR DETAILS
 - SWING DOOR PANEL WITH A CONCEALED DOOR CLOSER, SEE SHEET AA-24 FOR DETAILS
 - FOLD DOOR PANEL WITH A PULL "C" HANDLE TO THE EXTERIOR AND PUSH BAR TO THE INTERIOR
 - STANDARD FINISH:
CLASS 1, .018MM, CLEAR- AA-M12C22A41

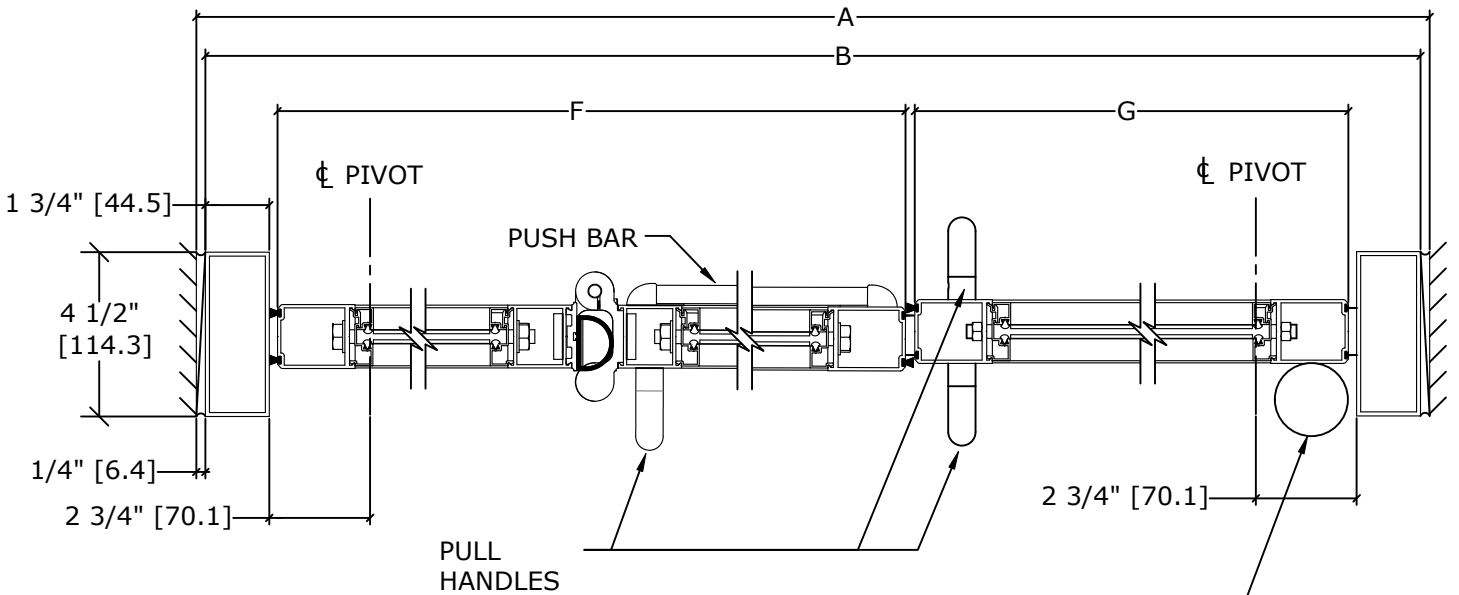
- OPTIONS INCLUDE:
- SPECIAL FINISHES
 - ***SMOKE SEALS
 - MUNTINS, SEE SHEET AA-14 FOR DETAILS
 - 7" AND 10" BOTTOM RAILS, SEE SHEET AA-14 FOR DETAILS
 - 5/8", 1", AND 1 1/4" INSULATED GLASS, SEE SHEET AA-13 FOR DETAILS. INSULATED GLASS NOT TO EXCEED 1/8" PANES
 - SEE SHEET OS-3 FOR ALL OTHER OPTIONS.



BREAKOUT SIDE

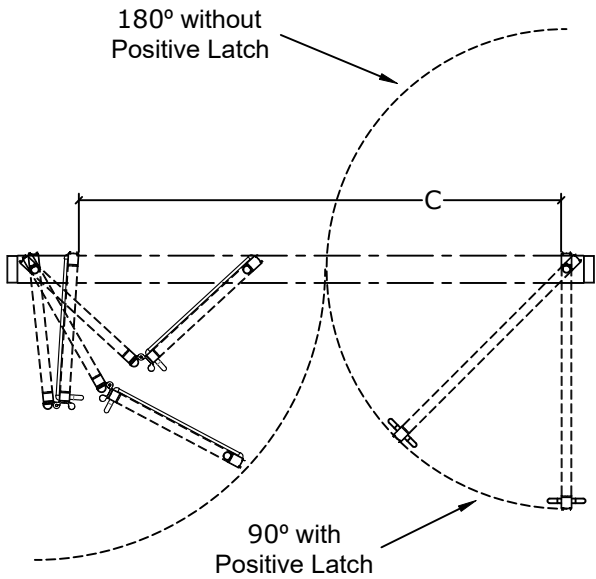
SECTION B-B
SCALE - 1:5

FINISHED FLOOR
MUST NOT BE
CONCAVE ACROSS
THE CLEAR
DOOR OPENING
AND NOT OUT OF
LEVEL MORE THAN 1/8"



BREAKOUT SIDE
RH Fold and Swing Shown
(LH Opposite)

SECTION A-A
SCALE - 1:5



BREAKOUT SIDE

TOP VIEW
SCALE - 1:30

REFER TO RELEVANT [LOCAL, STATE, NATIONAL, OR AHJ] BUILDING CODE FOR MIN DOOR HEIGHT & MIN/MAX WIDTH ALLOWABLE FOR EGRESS REQUIREMENT IN CONJUNCTION WITH TABLE.

DWG NO.	1016235
DRN BY	DBN
DATE	10/25/18
CHK BY	CLW
DATE	10/25/18
REV.	4.0
DATE	01/20/22