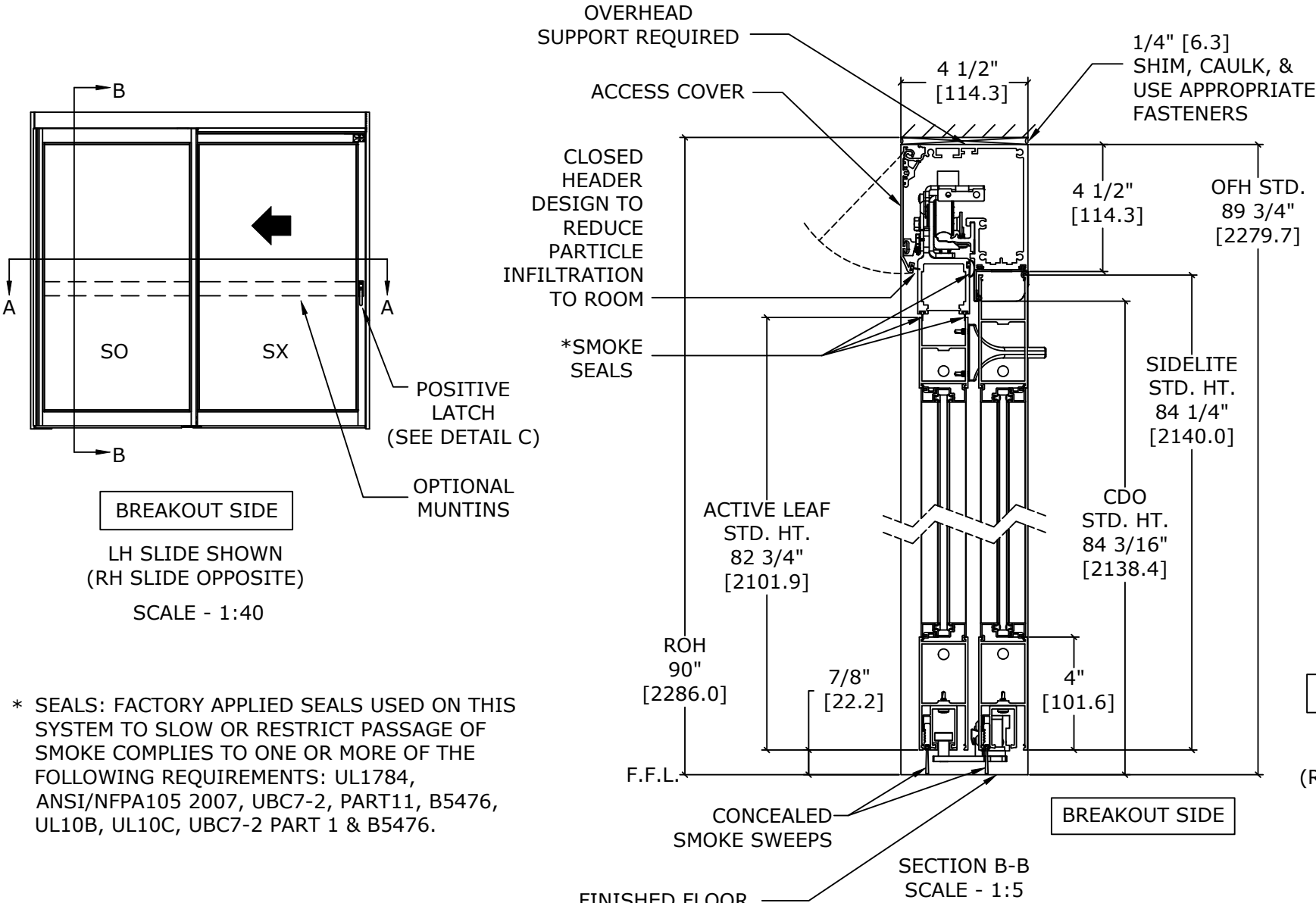


MODEL NO.	OVERALL FRAME WIDTH (A)	CLEAR DOOR OPENING WIDTH (B)	BREAKOUT OPENING WIDTH (C)	ACTIVE LEAF WIDTH (D1)	SIDELITE WIDTH (D2)	ROUGH OPENING WIDTH (E)
VMS2FBO-8	96" [2438.4]	44 1/2" [1130.3]	89" [2260.6]	49" [1244.6]	45 5/8" [1158.9]	96 1/2" [2451.1]
VMS2FBO-8-6	102" [2590.8]	47 1/2" [1206.5]	95" [2413.0]	52" [1320.8]	48 5/8" [1235.1]	102 1/2" [2603.5]
		A/2 - 3 1/2" A/2 - [88.9]	A - 7" A - [177.8]	A/2 + 1" A/2 + [25.4]	A/2 - 2 3/8" A/2 - [60.3]	A + 1/2" A + [12.7]

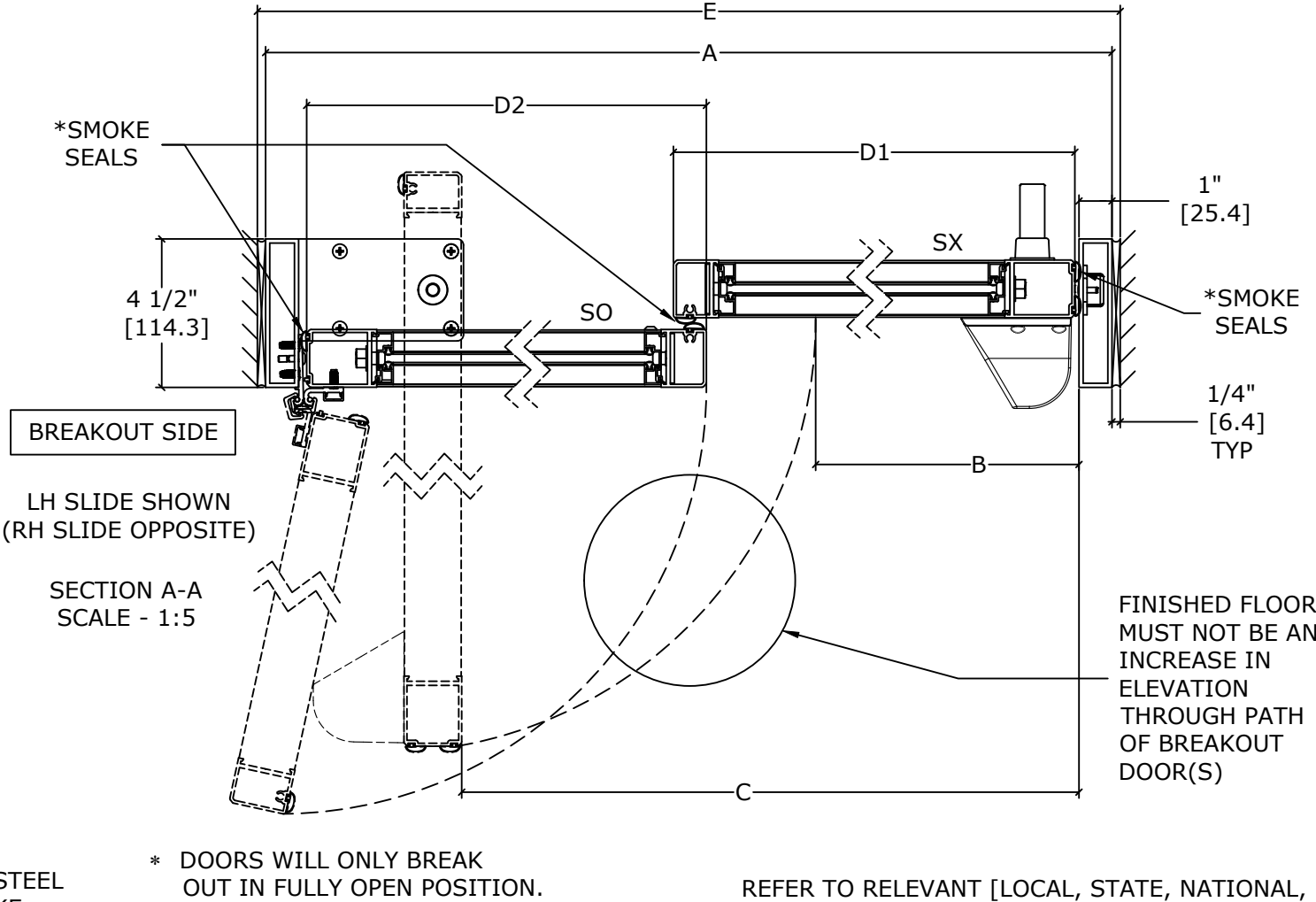
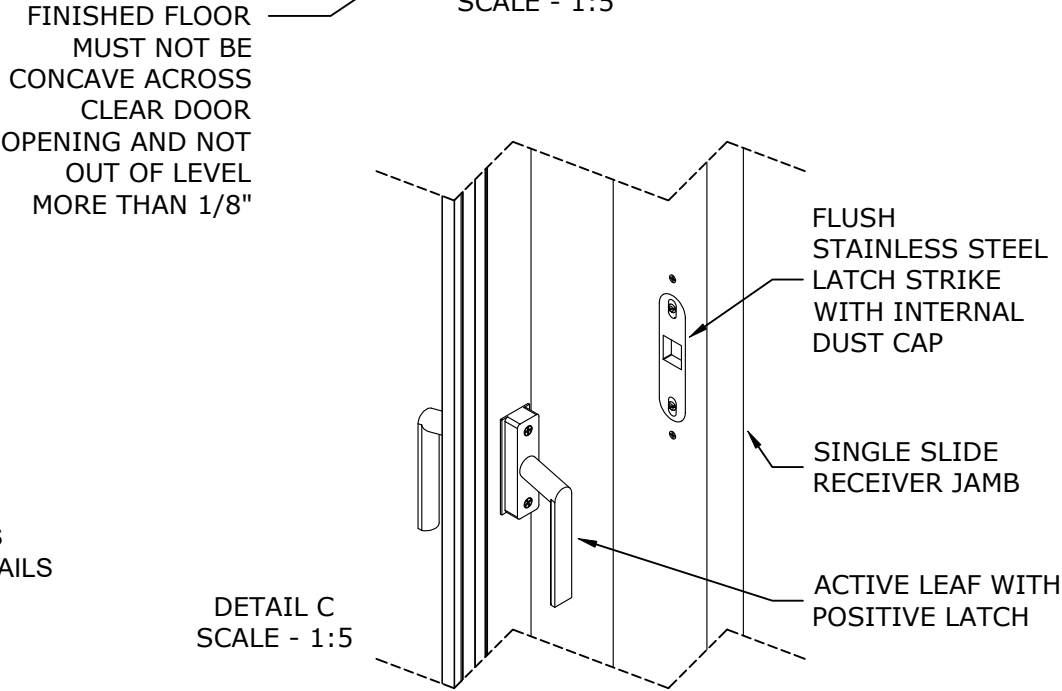


**NOTES:**  
STANDARD PACKAGE CONSISTS OF:

- STANDARD FINISH:  
CLASS 1, .018MM, CLEAR- AA-M12C22A41
- NARROW STILE RAILS
- 1/4" GLASS STOPS AND BLOCKS
- NURSE ASSIST MAGNETIC CATCHES
- POSITIVE LATCHING
- CONCEALED SWEEPS
- SMOKE RATED SEALS
- FLUSH BOLT-FREE DESIGN

OPTIONS AVAILABLE:

- SPECIAL FINISHES
- PACKAGE WILL ACCEPT UP TO 1 1/4" [31.8]  
INSULATED GLASS, SEE SHEET AA-13 FOR DETAILS
- 7" & 10" BOTTOM RAILS, SEE SHEET AA-14 FOR DETAILS
- MUNTINS, SEE SHEET AA-14 FOR DETAILS
- SELF-CLOSING, SEE SHEET AA-2 FOR DETAILS
- SEE SHEET OS-1 FOR ALL OTHER OPTIONS.



REFER TO RELEVANT [LOCAL, STATE, NATIONAL, OR AHJ] BUILDING CODE FOR MIN DOOR HEIGHT & MIN/MAX WIDTH ALLOWABLE FOR EGRESS REQUIREMENT IN CONJUNCTION WITH TABLE.

DWG NO. ACH-1552950					
DRN BY	DBN	DATE	12/19/24	CHK BY	CBG
		DATE	12/19/24	REV.	3.0
		DATE	08/14/25		
<div>ASSA ABLOY</div>					