

Technical Data Sheet

ASSA ABLOY SL500 EXR-SW

ASSA ABLOY
Entrance Systems

Experience a safer
and more open world



Features

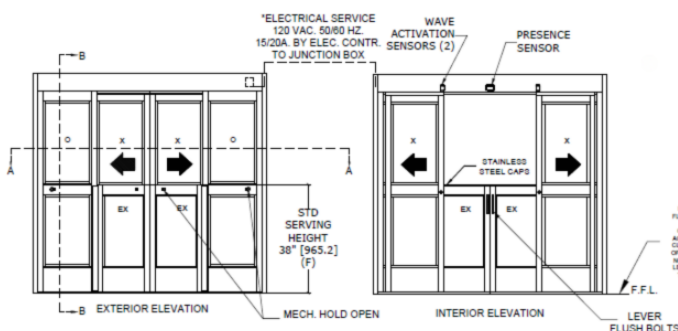
- Complies with ANSI/BHMA A156.38 Standard for Low Energy Power Operated Sliding and Folding Doors.
- UL 325 and FPA #30356 listed.
- Trained Traffic Only. Not for public use.
- Non panic configuration.
- Functions as pass through window with express swing doors closed, employee pass through with express swing doors open.
- Swing half-panel express doors with common door hardware.
- Easy-to-clean – no lubrication required.
- Stainless steel express window sill.
- Continuous hinge for express door half panels.
- No visible external locks.
- This product is covered by US Patents US11,448,003 and US11,713,616.

The ASSA ABLOY SL500 EXR-SW Express Door is a hurricane rated door package designed for use in quick serve operations. The door remains closed and electronically locked when not in use. An automatic window feature is achieved through your choice of activation. When the lock is unlatched, the express swing doors can swing to 180 degrees and latch to allow for convenient pass through of goods.

With State of Florida approval, a Level D impact rating, and 80 psf, it's the perfect combination of strength and convenience for hurricane windborne zones.

Configurations

	Narrow
Vertical Stiles	2-1/8"
Bottom Rails	10"
Muntin Bars	4"



Exterior Elevation
SL500 EXR-SW Bi-Part

Interior Elevation
SL500 EXR-SW Bi-Part

Not for use as an Accessible Means of Egress

Exterior view



Bi-Parting Narrow Stile

	Min	Max
Frame Width	96"	120"
Clear Opening	30"	36"
Mounting Height	90"	104"

Operator Type DC Electro-mechanical ¼ HP

Door Width	Max 24-3/8"
Door Weight	300 lbs. max
Power Supply	85V – 265V adjusting automatically
Power Consumption	250W
AMP Requirements	A maximum of 3 amp draw, allowing 5 operators on one 20 amp circuit

Electro-mechanical locking device	Fail Safe
Glass stops	1/4" sloped, 9/16" laminated
Opening Time	1.5 Sec
Closing Time	3.5 Sec
Hold Open Time	0-60 adjustable
Ambient Temperature	-31°F to 122°F (-35°C to 50°C)
Usage	This product can be installed internally or externally with suitable weather protection

Complies and exceeds	ANSI/BHMA A156.38, UL325, CUL – Approved for use in Canada NFPA 70 – National Electrical Code ASTM F842-17 Forced Entry Resistance rating of Grade 25
----------------------	---

Impact Levels/ Glass Compatibility	Level D: large missile impact test rated at 50 feet per second and is available in 9/16" insulated glass. Non-impact entrances require shutter system for use in wind borne debris regions.
---------------------------------------	--

PSF Rating	80 PSF
Florida Approvals	Impact/Non Impact – Fixed Sidelite – Bipart - 30356

How it works:



Express Features

Here, swing express doors swing open and latch securely out of the way, letting employees safely enter and exit while the SL500 door secures behind them.



Automatic Window

Here, the swing express doors remain closed, while the SL500 door opens as needed. This creates an automatic window.



Closed Door

The door remains closed and electronically locked when not in use. When interior activation is required, simply open your SL500 EX-SW via motion activation or key FOB/card reader from the exterior.

Standard Features

- Bi-part configuration.
- Narrow stile.
- 4" muntin bars.
- 10" bottom rails.
- Concealed sweeps.
- Fail-safe electric locks.
- Air curtain interface.
- Security switch.
- Position switch (3 position or 5 position).
- Mechanical hold open.
- Flush bolts.

Optional Features

- Battery back-up.

Knowing Act Activation

- Push or wave plates to activate door.
- Presence detectors.

Push/Wave Plates

- Your choice of wave or push plates offered in stainless steel or black finish.
- Quantity of wave/push plates – per our selection of 1 – 4.

Presence Detection - Interior

- SP81 & SA 81 Overhead Sensor.
- SP36 Overhead Sensor.
- SP56 Overhead Sensor.
- SP81 Overhead Sensor.

Presence Detection - Exterior

- SP36 Overhead Sensor.
- SP56 Overhead Sensor.

Aesthetics

Anodized Finish:

- Clear, Dark Bronze.

Painted Finish:

- Powder coat painted to match architect's sample.
- Kynar finish to match architect's sample.