


NOTE:

PACKAGE INCLUDES AUTOMATIC OPERATORS, CONTROLLERS, DOUBLE ACTING ARMS  
AND SENSOR SYSTEM PER YOUR SELECTION.  
SEE I-ADAPT DRAWINGS 1010265 AND 1010266 FOR DETAILS ON SENSOR SYSTEM.

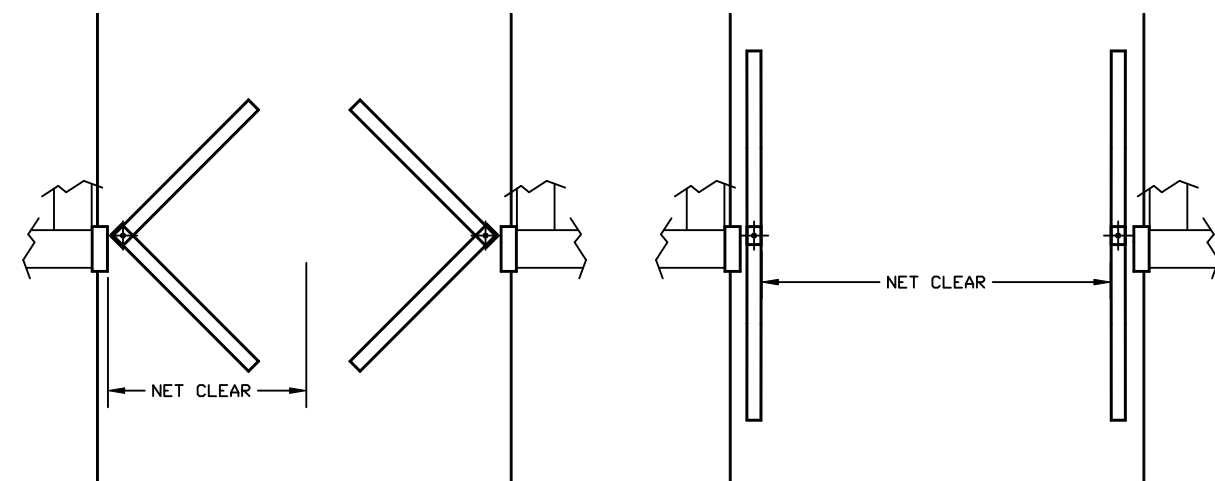
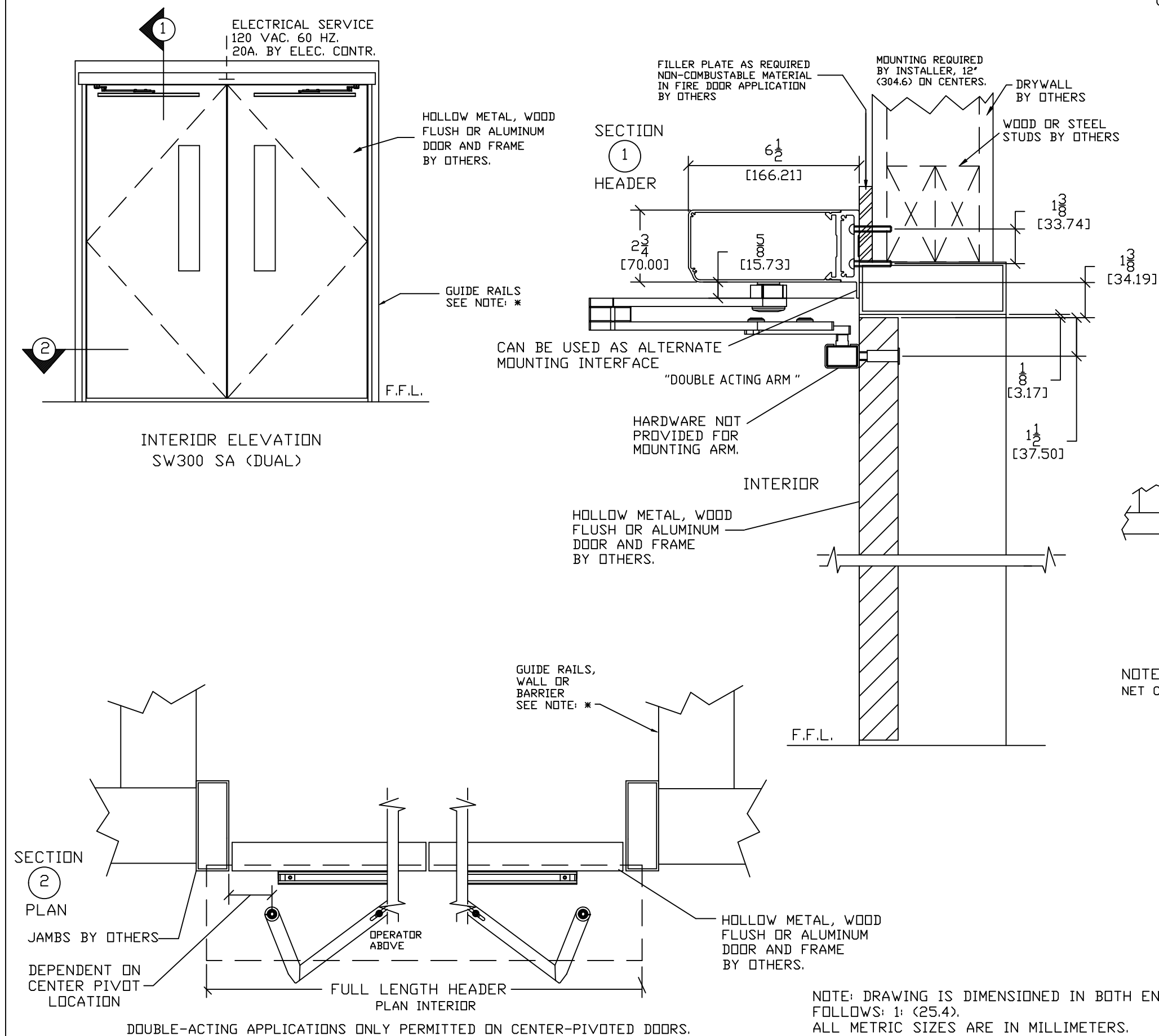
 SW300 IS DESIGNED FOR HIGH PERFORMANCE, HEAVY USAGE PEDESTRIAN APPLICATIONS THAT COMPLY WITH ANSI A156.10. THE OPERATOR CAN ALSO BE ADJUSTED FOR LOWER MANUAL PUSH FORCES TO COMPLY WITH ANSI A156.19 AND FIRE DOOR REGULATIONS.  
SW300 SHIPS AS LOW ENERGY BUT CAN BE PROGRAMMED AS FULL ENERGY.  
SW300 IS A DUAL ACTING OPERATOR.  
DOUBLE ACTING ARM CAN BE USED AS PUSH OR PULL APPLICATION.

STANDARD FINISH:  
CLEAR - AA-M12C22A41, CLASS 1, .018 MM  
DARK BRONZE - AA-M12C22A44, CLASS 1, .018 MM  
SPECIAL FINISHES ARE AVAILABLE

OPTIONS AVAILABLE:

- RECEIVERS/TRANSMITTERS, SEE SHEET AA-192 FOR DETAILS
- SWITCHES/MODE SELECTORS, SEE SHEET AA-193 FOR DETAILS
- PUSHPLATES/WAVEPLATES, SEE SHEET AA-194 FOR DETAILS
- DOUBLE ACTING ARM, SEE SHEET AA-198 FOR DETAILS
- ELECTRICAL CONNECTIONS, SEE SHEET AA-199/200 FOR DETAILS

SEE SHEET OS-12 FOR ALL OTHER OPTIONS.



NOTE: \*  
NET CLEAR (EGRESS MIN 32" (812.8)) SINGLE DOOR

NOTE: \*  
SINGLE DOOR WIDTH NOT LESS THAN 30".

ENCROACHMENT OF 4" INTO NET CLEAR BY  
PANIC HARDWARE IS PERMITTED ABOVE 34".

\* GUIDE RAILS (SHOWN, PROVIDED BY OTHERS) ARE REQUIRED ON THE SWINGPATH SIDE OF POWER OPERATED PEDESTRIAN DOORS (ANSI A156.10) BUT NOT ON LOW ENERGY POWER OPERATED DOORS (ANSI A156.19).

DWG NO. ACH-1577173											
DRN BY	SS	DATE	3/15/25	CHK BY	DT	DATE	3/15/25	REV.	3.0	DATE	7/3/25
<div></div> <div></div> <div></div> <div></div> <div></div> <div></div>											
<div>ASSA ABLOY</div>						<div></div> <div></div> <div></div>					