

NOTE:
PACKAGE INCLUDES AUTOMATIC OPERATORS, CONTROLLERS, SLIDE PULL ARM, PUSH ARM AND SENSOR SYSTEM PER YOUR SELECTION.
SEE I-ADAPT DRAWINGS 1010265 AND 1010266 FOR DETAILS ON SENSOR SYSTEM.

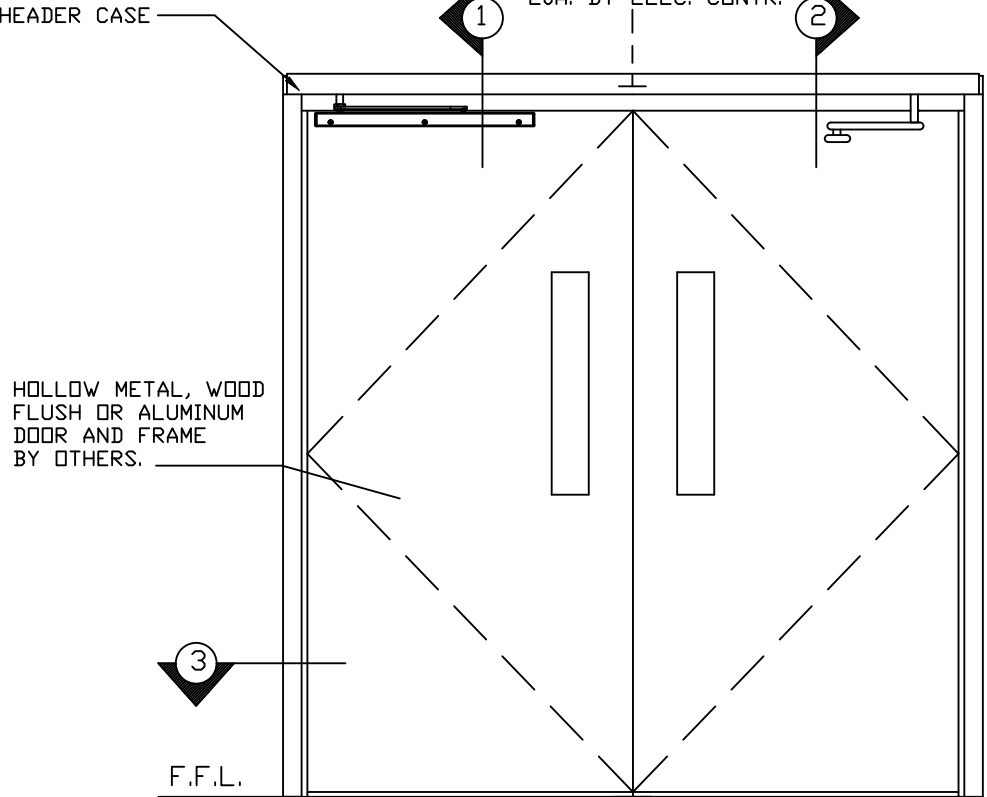
SW300 IS DESIGNED FOR HIGH PERFORMANCE, HEAVY USAGE PEDESTRIAN APPLICATIONS THAT COMPLY WITH ANSI A156.10. THE OPERATOR CAN ALSO BE ADJUSTED FOR LOWER MANUAL PUSH FORCES TO COMPLY WITH ANSI A156.19 AND FIRE DOOR REGULATIONS.
SW300 SHIPS AS LOW ENERGY BUT CAN BE PROGRAMMED AS FULL ENERGY.
SW300 IS A DUAL ACTING OPERATOR.

STANDARD FINISH:
CLEAR - AA-M12C22A41, CLASS 1, .018 MM
DARK BRONZE - AA-M12C22A44, CLASS 1, .018 MM
SPECIAL FINISHES ARE AVAILABLE

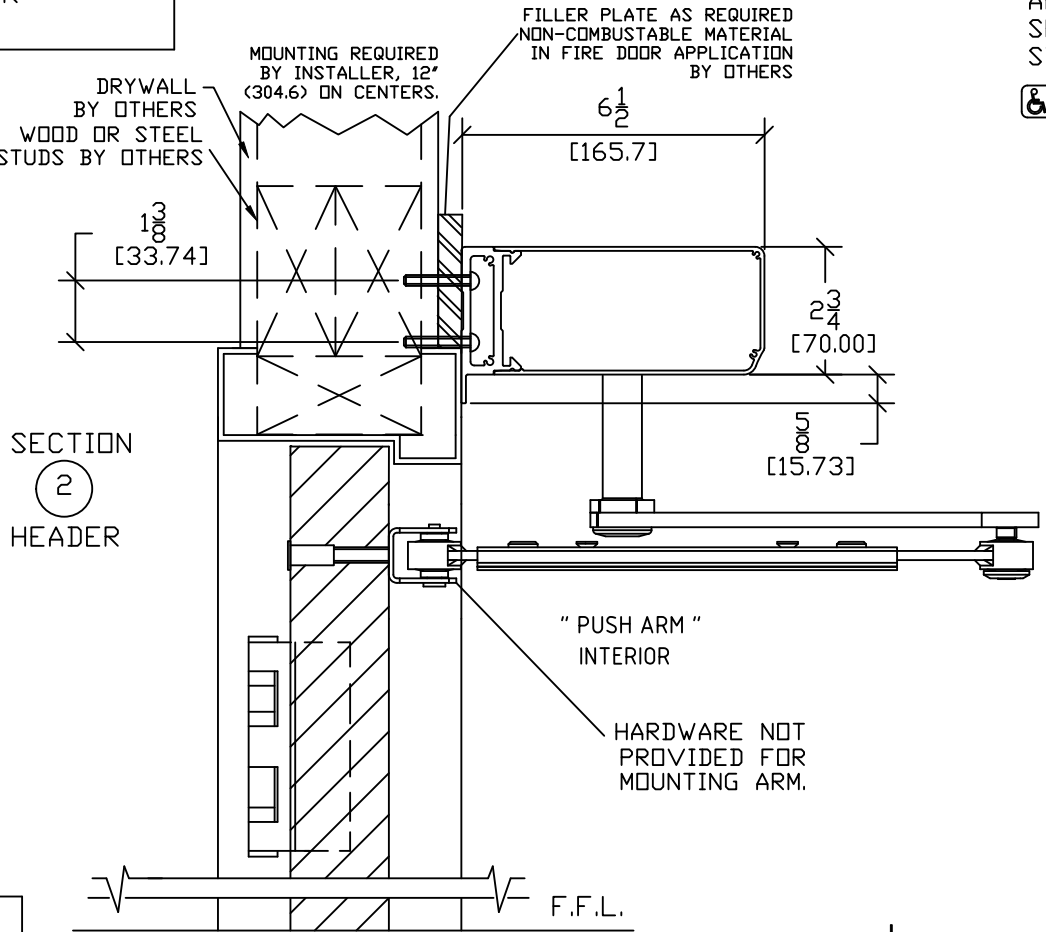
OPTIONS AVAILABLE:

- RECEIVERS/TRANSMITTERS, SEE SHEET AA-192 FOR DETAILS
- SWITCHES/MODE SELECTORS, SEE SHEET AA-193 FOR DETAILS
- PUSHPLATES/WAVEPLATES, SEE SHEET AA-194 FOR DETAILS
- PULL/PUSH ARM, SEE SHEET AA-196/197 FOR DETAILS
- ELECTRICAL CONNECTIONS, SEE SHEET AA-199/200 FOR DETAILS

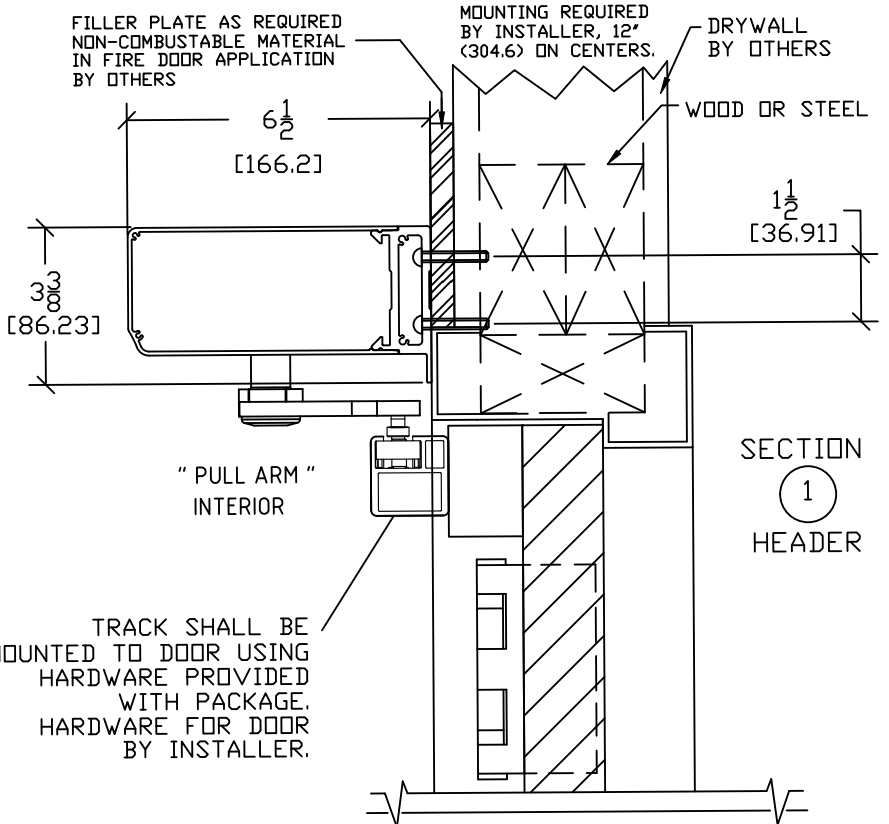
SEE SHEET OS-12 FOR ALL OTHER OPTIONS.



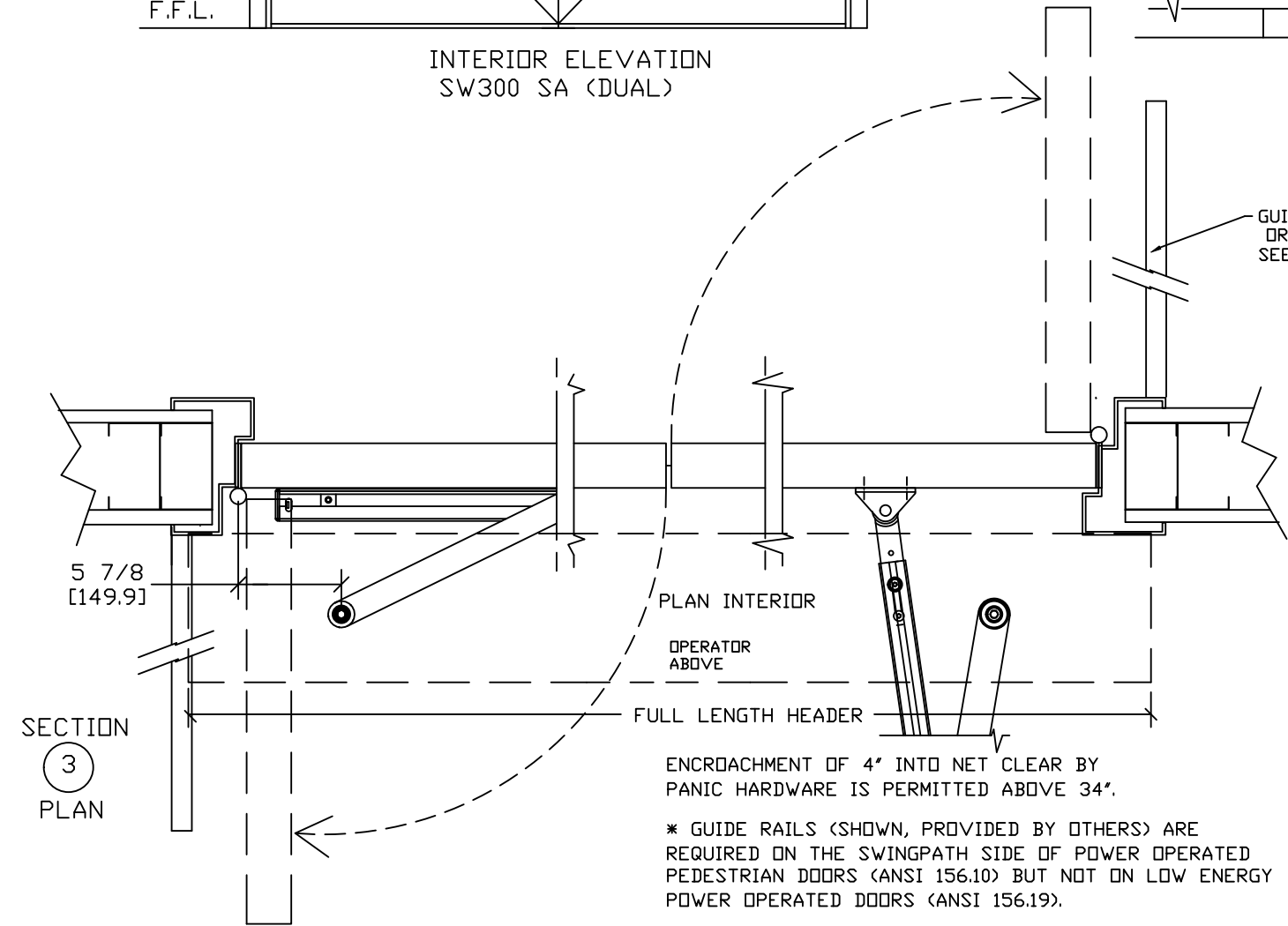
INTERIOR ELEVATION
SW300 SA (DUAL)



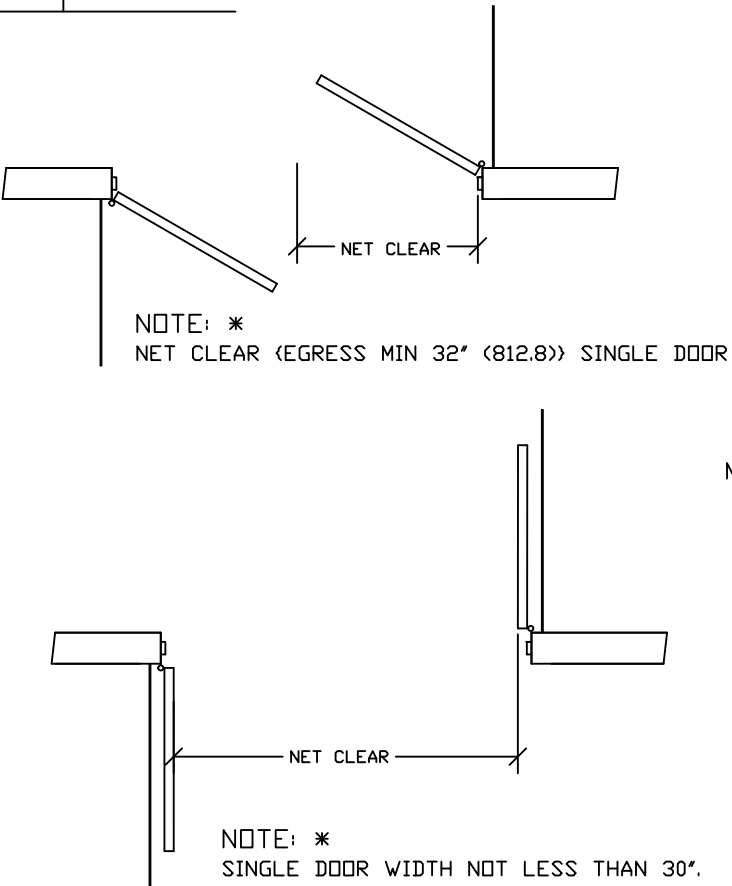
SECTION
2
HEADER



SECTION
1
HEADER



SECTION
3
PLAN



NOTE: DRAWING IS DIMENSIONED IN BOTH ENGLISH AND METRIC. REF. AS FOLLOWS: 1: (25.4). ALL METRIC SIZES ARE IN MILLIMETERS.

DWG NO. ACH-1577171					
DRN BY	SS	DATE	3/15/25	CHK BY	DT
		DATE	3/15/25	REV.	3.0
		DATE	7/3/25		