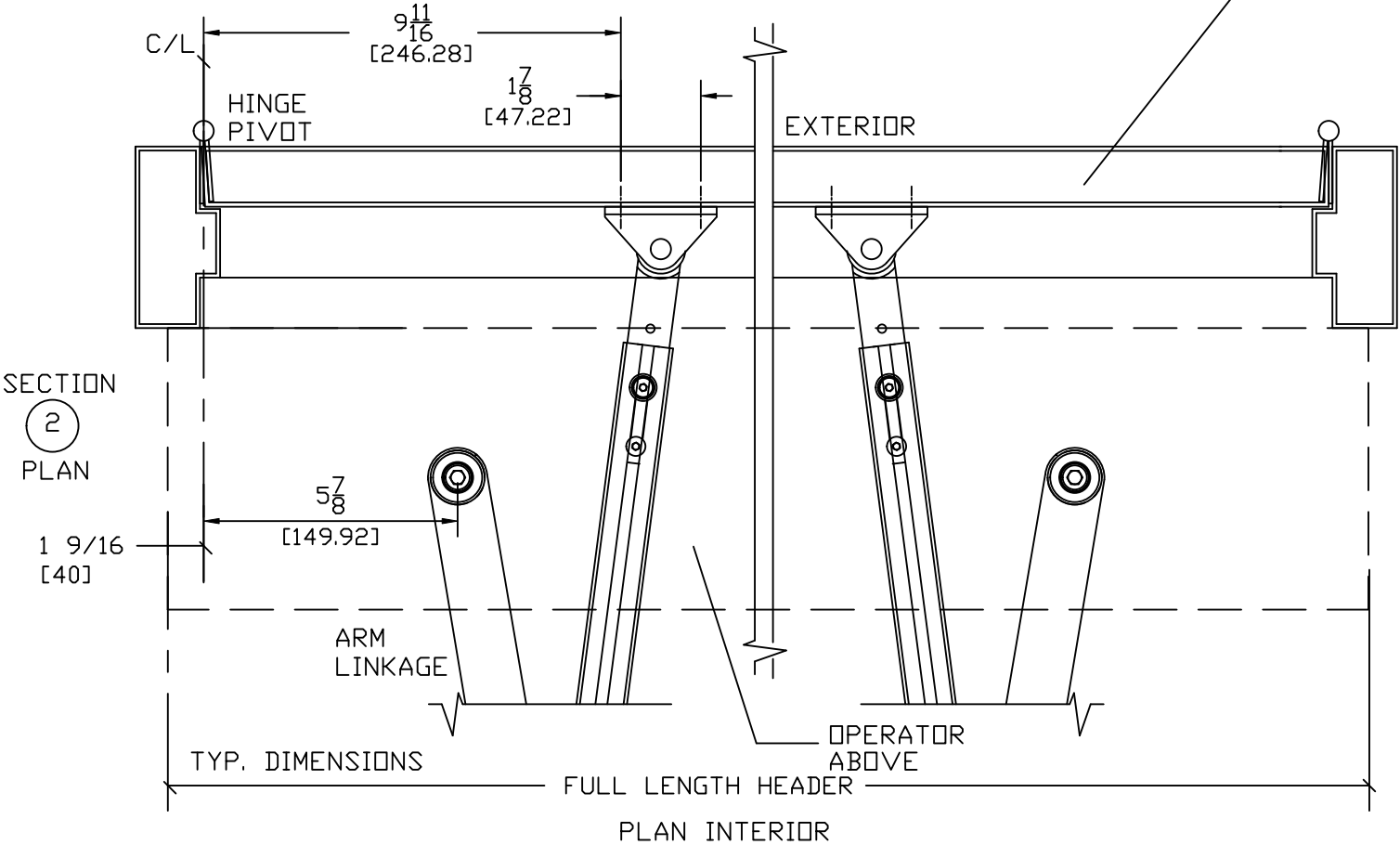


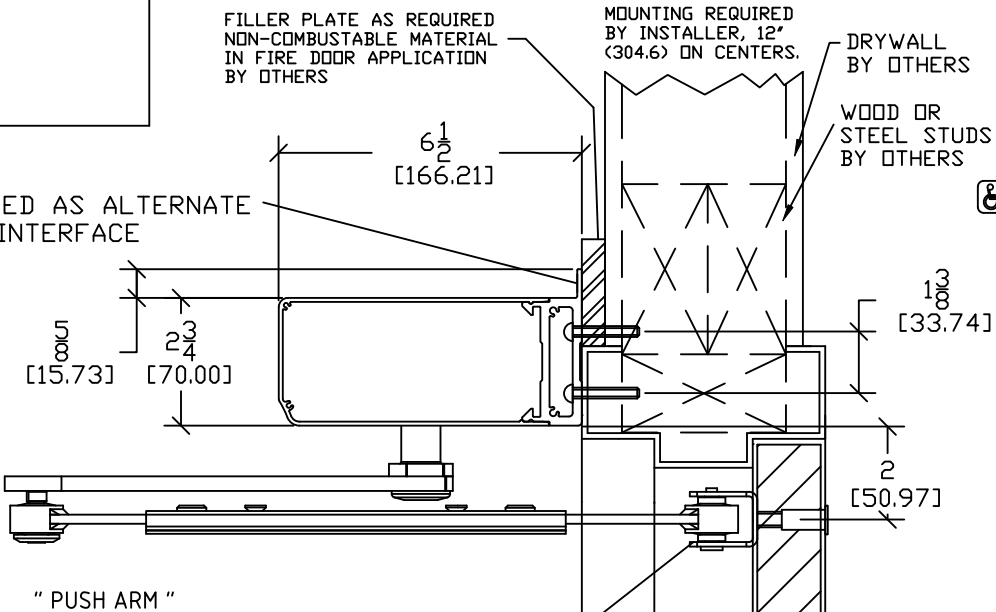
INTERIOR ELEVATION
SW300 SA (DUAL)



SECTION
2
PLAN

CAN BE USED AS ALTERNATE
MOUNTING INTERFACE

SECTION
1
HEADER



" PUSH ARM "

HARDWARE NOT
PROVIDED FOR
MOUNTING ARM.

HOLLOW METAL, WOOD
FLUSH OR ALUMINUM
DOOR AND FRAME
BY OTHERS.

INTERIOR

F.F.L.

NOTE: DRAWING IS DIMENSIONED IN BOTH ENGLISH
AND METRIC. REF. AS FOLLOWS: 1: (25.4).
ALL METRIC SIZES ARE IN MILLIMETERS.

NOTE:

PACKAGE INCLUDES AUTOMATIC OPERATORS, CONTROLLERS, PUSH
ARMS AND SENSOR SYSTEM PER YOUR SELECTION.
SEE I-ADAPT DRAWINGS 1010265 AND 1010266 FOR DETAILS

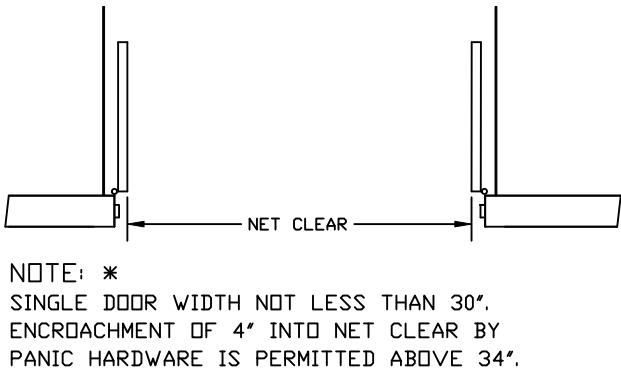
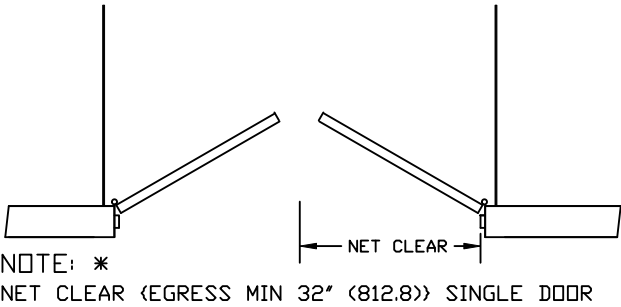
SW300 IS DESIGNED FOR HIGH PERFORMANCE, HEAVY USAGE
PEDESTRIAN APPLICATIONS THAT COMPLY WITH ANSI A156.10. THE
OPERATOR CAN ALSO BE ADJUSTED FOR LOWER MANUAL PUSH
FORCES TO COMPLY WITH ANSI A156.19 AND FIRE DOOR
REGULATIONS.
SW300 SHIPS AS LOW ENERGY BUT CAN BE PROGRAMMED AS FULL
ENERGY.
SW300 IS A DUAL ACTING OPERATOR.

STANDARD FINISH:
CLEAR - AA-C23-A31
DARK BRONZE - AA-C23-A44
SPECIAL FINISHES ARE AVAILABLE

OPTIONS AVAILABLE:

- RECEIVERS/TRANSMITTERS, SEE SHEET AA-192 FOR DETAILS
- SWITCHES/MODE SELECTORS, SEE SHEET AA-193 FOR DETAILS
- PUSHPLATES/WAVEPLATES, SEE SHEET AA-194 FOR DETAILS
- PUSH ARM, SEE SHEET AA-197 FOR DETAILS
- ELECTRICAL CONNECTIONS, SEE SHEET AA-199 FOR DETAILS

SEE SHEET DS-12 FOR ALL OTHER OPTIONS.



* GUIDE RAILS (SHOWN, PROVIDED BY OTHERS) ARE
REQUIRED ON THE SWINGPATH SIDE OF POWER OPERATED
PEDESTRIAN DOORS (ANSI A156.10) BUT NOT ON LOW ENERGY
POWER OPERATED DOORS (ANSI A156.19).

DWG NO. ACH-1577169					
DRN BY SS	DATE 3/15/25	CHK BY DT	DATE 3/15/25	REV. 3.0	DATE 7/3/25