


NOTE:

PACKAGE INCLUDES AUTOMATIC OPERATOR, CONTROLLER, GUIDE, PULL ARM
AND SENSOR SYSTEM PER YOUR SELECTION.
SEE I-ADAPT DRAWINGS 1010265 AND 1010266 FOR DETAILS ON SENSOR SYSTEM.

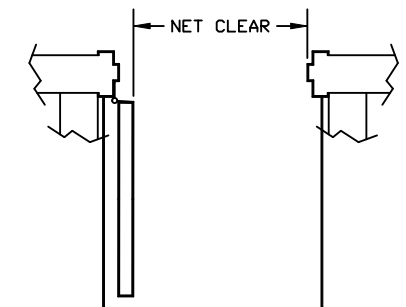
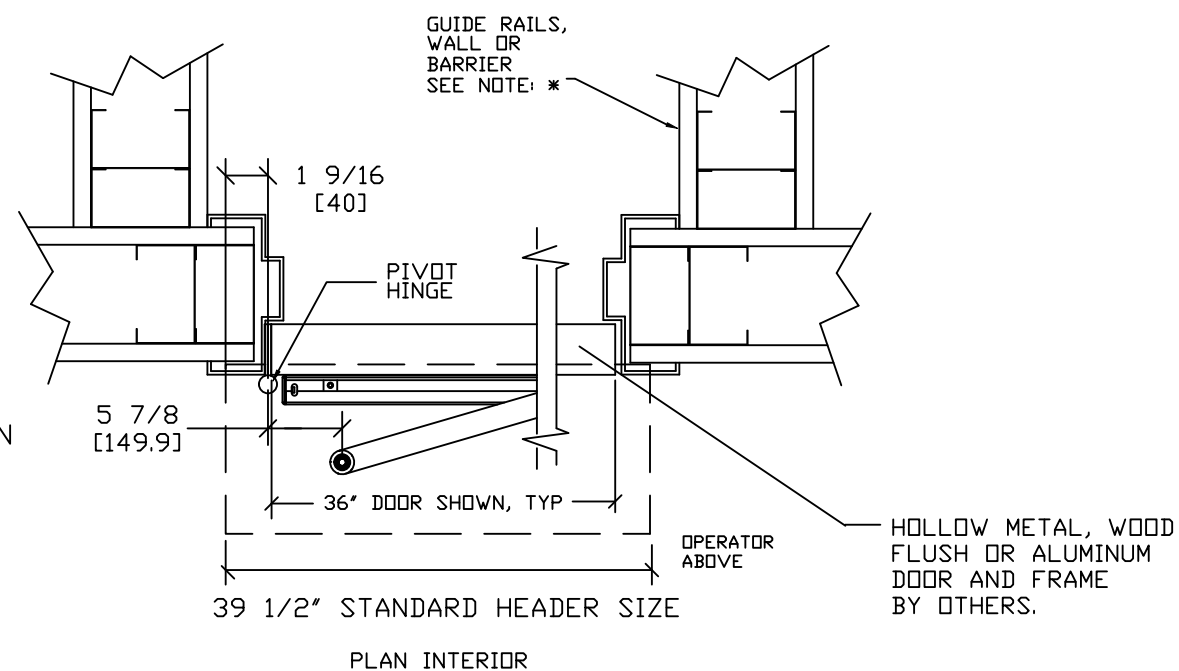
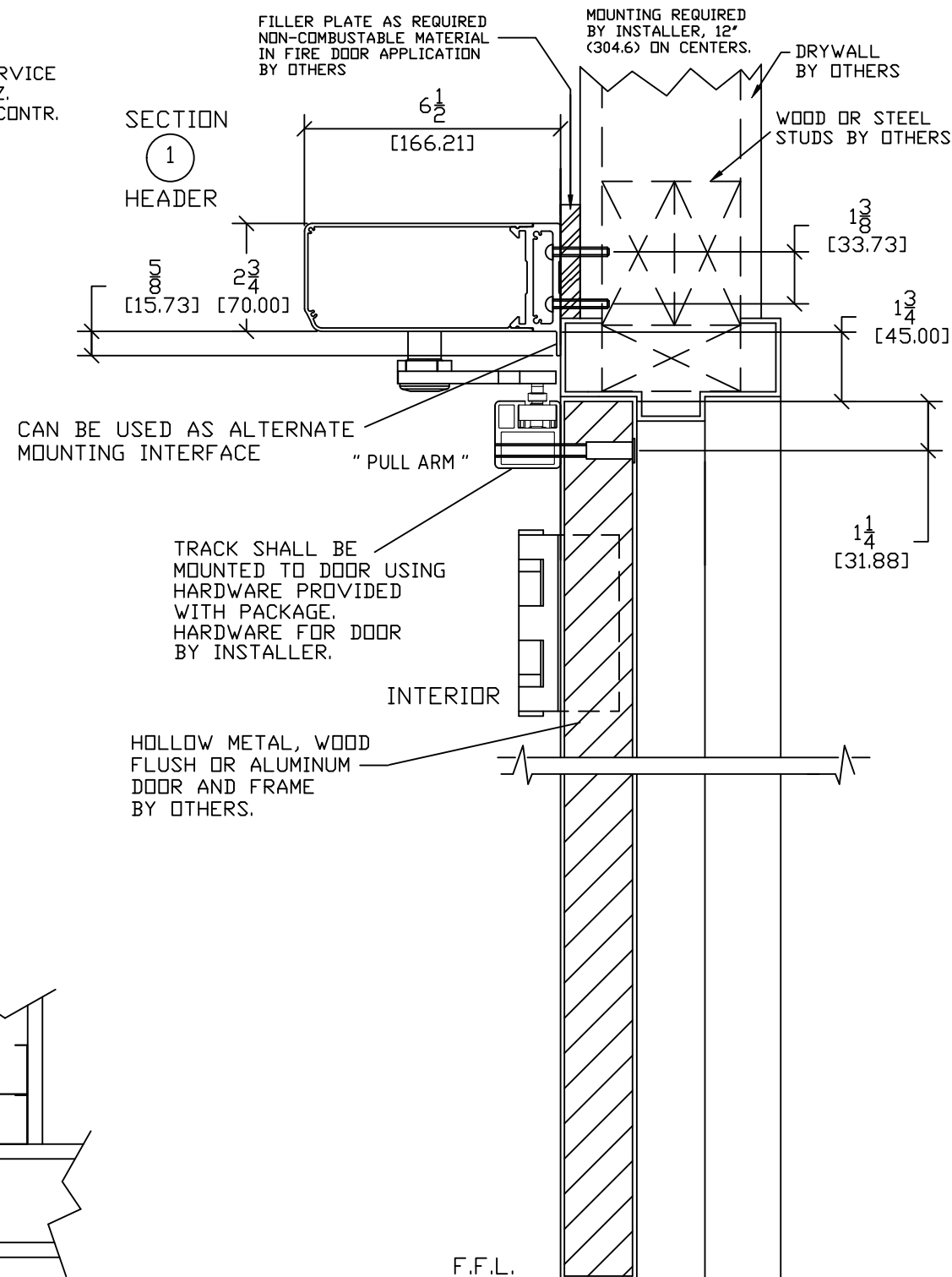
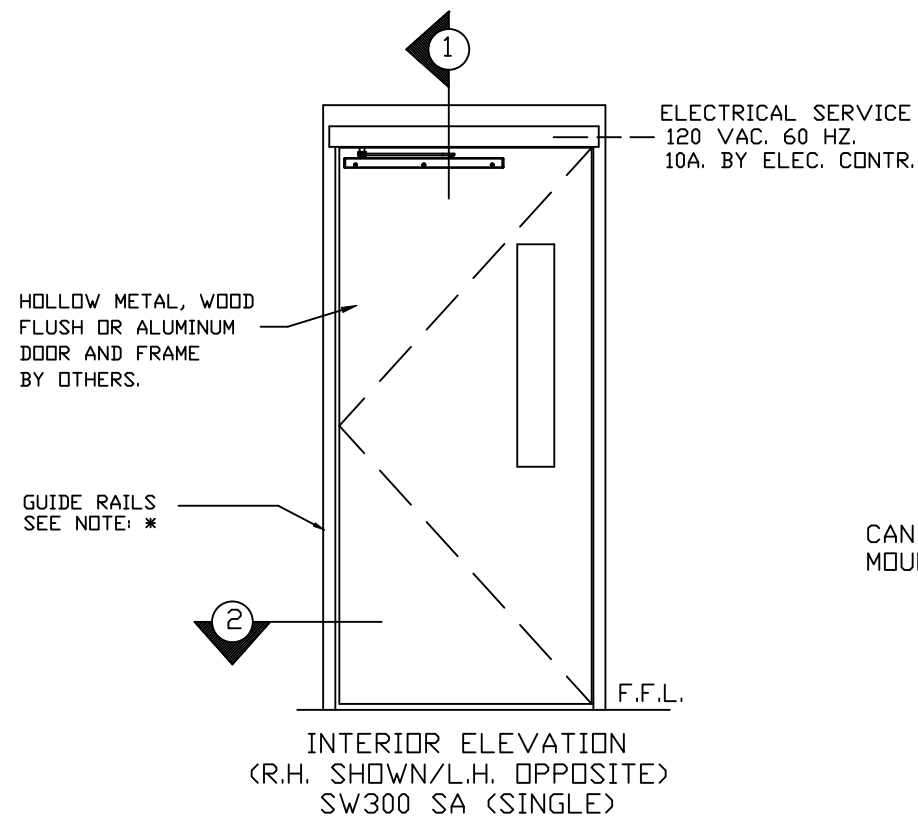
 SW300 IS DESIGNED FOR HIGH PERFORMANCE, HEAVY USAGE PEDESTRIAN APPLICATIONS THAT COMPLY WITH ANSI A156.10. THE OPERATOR CAN ALSO BE ADJUSTED FOR LOWER MANUAL PUSH FORCES TO COMPLY WITH ANSI A156.19 AND FIRE DOOR REGULATIONS. SW300 SHIPS AS LOW ENERGY BUT CAN BE PROGRAMMED AS FULL ENERGY. SW300 IS A DUAL ACTING OPERATOR.

STANDARD FINISH:
CLEAR - AA-M12C22A41, CLASS 1, .018 MM
DARK BRONZE - AA-M12C22A44, CLASS 1, .018 MM
SPECIAL FINISHES ARE AVAILABLE

OPTIONS AVAILABLE:

- RECEIVERS/TRANSMITTERS, SEE SHEET AA-192 FOR DETAILS
- SWITCHES/MODE SELECTORS, SEE SHEET AA-193 FOR DETAILS
- PUSHPLATES/WAVEPLATES, SEE SHEET AA-194 FOR DETAILS
- PULL ARM, SEE SHEET AA-196 FOR DETAILS
- ELECTRICAL CONNECTIONS, SEE SHEET AA-200 FOR DETAILS

SEE SHEET DS-12 FOR ALL OTHER OPTIONS.



NOTE: *

NET CLEAR (EGRESS MIN 32" (813)) DOOR
OPENING CLEARANCES MAY BE COMPROMISED
BY THE ADDITION OF SURFACE MOUNTED HARDWARE
(SUCH AS PANICS).

* GUIDE RAILS (SHOWN, PROVIDED BY OTHERS) ARE
REQUIRED ON THE SWINGPATH SIDE OF POWER
OPERATED PEDESTRIAN DOORS (ANSI A156.10) BUT NOT
ON LOW ENERGY POWER OPERATED DOORS (ANSI A156.19).

DWG NO.		ACH-1577168									
DRN BY	SS	DATE	3/15/25	CHK BY	DT	DATE	3/15/25	REV.	3.0	DATE	7/3/25
<hr/> <hr/> <hr/> <hr/> <hr/> <hr/> <hr/>											
ASSA ABLOY						<hr/> <hr/> <hr/> <hr/>					

NOTE: DRAWING IS DIMENSIONED IN BOTH ENGLISH
AND METRIC. REF. AS FOLLOWS: 1: (25.4).
ALL METRIC SIZES ARE IN MILLIMETERS.