

120 VAC. 60 HZ. 20 A.
BY ELEC. CONTR. FOR
CTRLS. AT MID. POINT
OF HEADER.

HEADER CASE

HOLLOW METAL, WOOD
FLUSH OR ALUMINUM
DOOR AND FRAME
BY OTHERS.

F.F.L.

INTERIOR ELEVATION

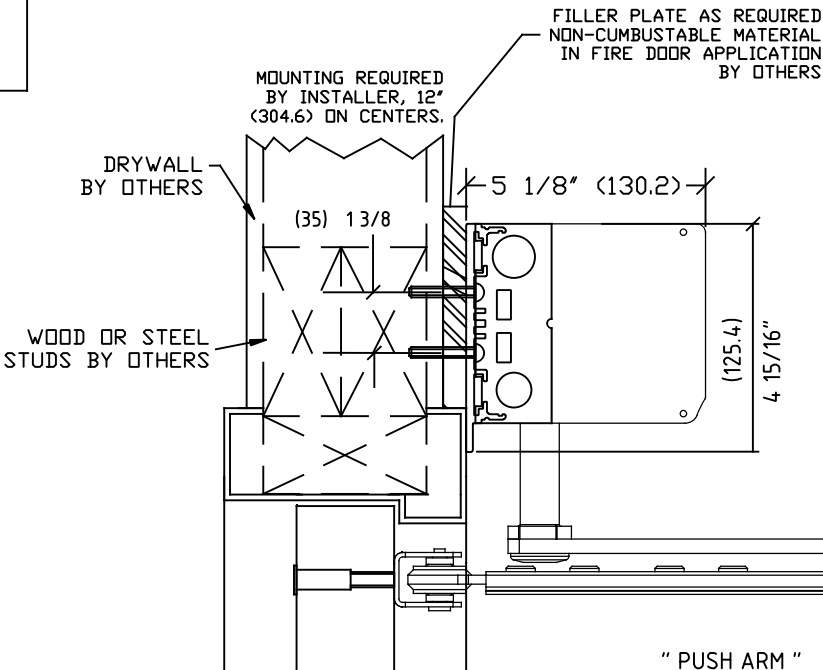
PLAN INTERIOR

OPERATOR
ABOVE

GUIDE RAILS
OR BARRIER
SEE NOTE: *

ENCROACHMENT OF 4" INTO NET CLEAR BY
PANIC HARDWARE IS PERMITTED ABOVE 34".

* GUIDE RAILS (SHOWN) ARE REQUIRED ON THE
SWINGPATH SIDE OF POWER OPERATED PEDESTRIAN
DOORS (ANSI 156.10) BUT NOT ON LOW ENERGY
POWER OPERATED DOORS (ANSI 156.19).



NOTE: *
NET CLEAR (EGRESS MIN 32" (812.8)) SINGLE DOOR

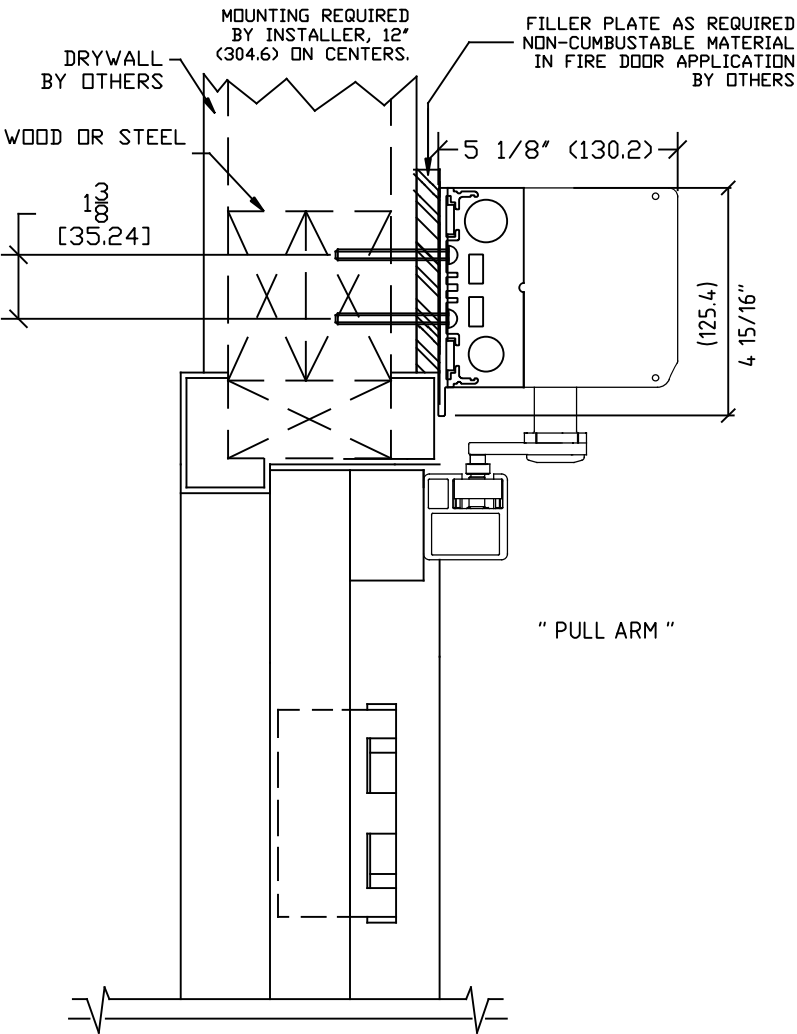
NOTE: *
SINGLE DOOR WIDTH NOT LESS THAN 30".

NOTE:

SW200i IS DESIGNED FOR HIGH PERFORMANCE, HEAVY
USAGE PEDESTRIAN APPLICATIONS THAT COMPLY WITH
ANSI A156.10. THE OPERATOR CAN ALSO BE ADJUSTED
FOR LOWER MANUAL PUSH FORCES TO COMPLY WITH
ANSI 156.19 AND FIRE DOOR REGULATIONS.

STANDARD FINISH:
CLEAR - AA-C23-A31.
DARK BRONZE - AA-C23-A44
SPECIAL FINISHES ARE AVAILABLE

NOTE: DRAWING IS DIMENSIONED IN BOTH ENGLISH
AND METRIC. REF. AS FOLLOWS: 1: (25.4).
ALL METRIC SIZES ARE IN MILLIMETERS.



DWG NO. 1015875					
DRN BY	MHW	DATE	10/20/16	CHK BY	SS
DATE	10/20/16	REV.	2.0	DATE	1/17/18