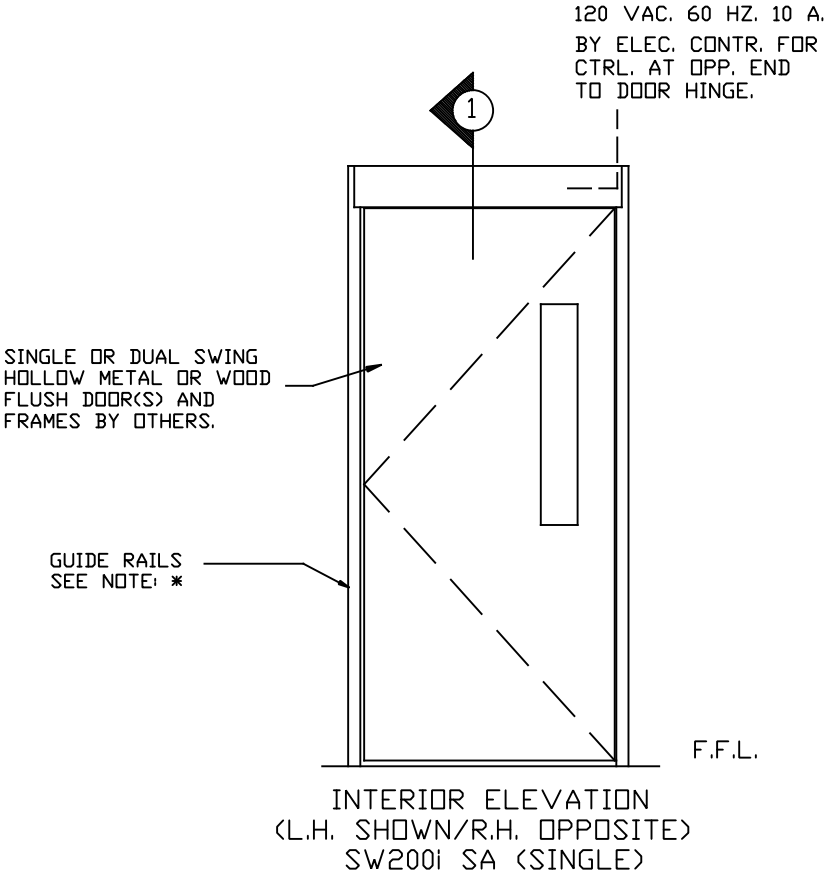


NOTE:

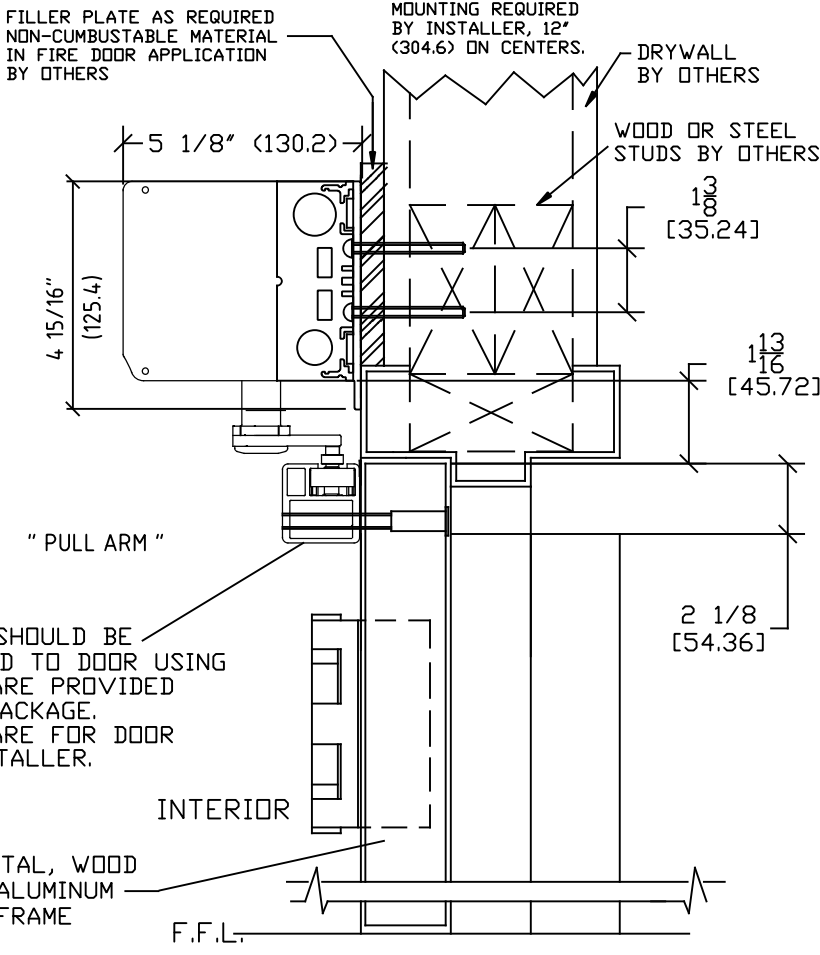
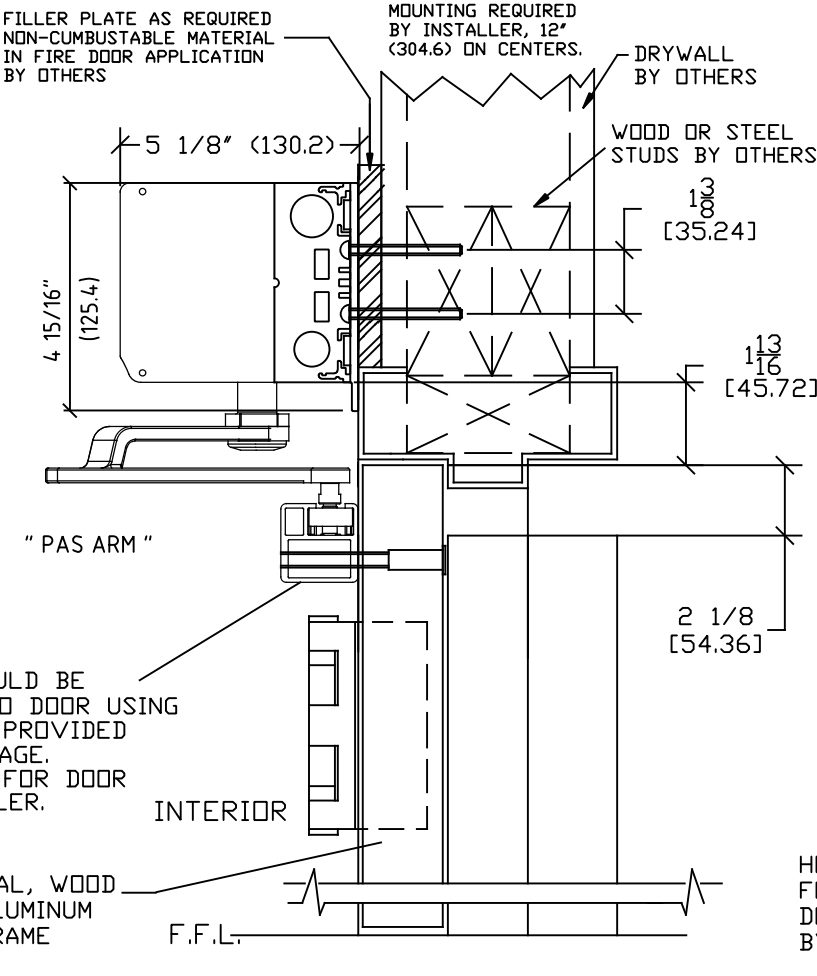
PACKAGE INCLUDES AUTOMATIC OPERATOR, CONTROLLER, SLIDE, PAS, or PUSH ARM AND SENSOR SYSTEM PER YOUR SELECTION.
SEE I-ADAPT DRAWINGS 1010265 AND 1010266 FOR DETAILS ON SENSOR SYSTEM.

SW200i IS DESIGNED FOR HIGH PERFORMANCE, HEAVY USAGE PEDESTRIAN APPLICATIONS THAT COMPLY WITH ANSI A156.10. THE OPERATOR CAN ALSO BE ADJUSTED FOR LOWER MANUAL PUSH FORCES TO COMPLY WITH ANSI 156.19 AND FIRE DOOR REGULATIONS.

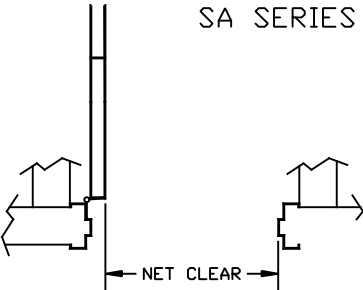
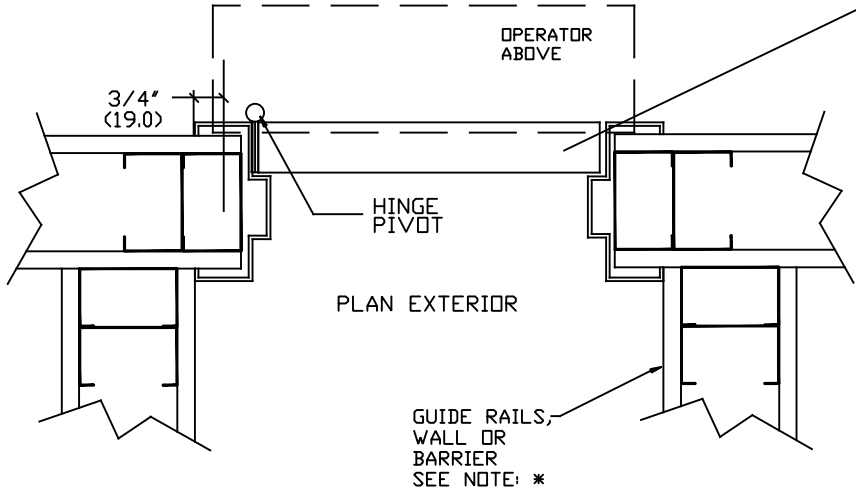
STANDARD FINISH:
CLEAR - AA-M12C22A41, CLASS 1, .018 MM
DARK BRONZE - AA-M12C22A44, CLASS 1, .018 MM
SPECIAL FINISHES ARE AVAILABLE



NOTE: DRAWING IS DIMENSIONED IN BOTH ENGLISH
AND METRIC. REF. AS FOLLOWS: 1: (25.4).
ALL METRIC SIZES ARE IN MILLIMETERS.



NOTE: *
NET CLEAR (EGRESS MIN 32" (813)) DOOR
OPENING CLEARANCES MAY BE COMPROMISED
BY THE ADDITION OF SURFACE MOUNTED HARDWARE
(SUCH AS PANICS).
* GUIDE RAILS (SHOWN) ARE REQUIRED ON THE
SWINGPATH SIDE OF POWER OPERATED PEDESTRIAN
DOORS (ANSI 156.10) BUT NOT ON LOW ENERGY
POWER OPERATED DOORS (ANSI 156.19).



| | | | | | | |
|-----------------|-----|------|----------|--------|----|---------------|
| DVG NO. 1015873 | | | | | | |
| DRN BY | MHW | DATE | 10/20/16 | CHK BY | SS | DATE 10/20/16 |
| | | REV. | 2.0 | | | DATE 1/17/18 |
| | | | | | | |
| | | | | | | |
| | | | | | | |
| | | | | | | |
| | | | | | | |
| | | | | | | |
| | | | | | | |