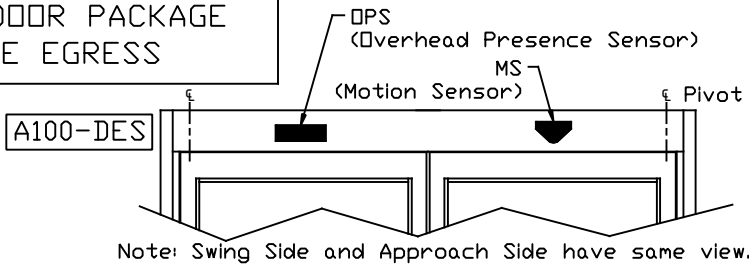
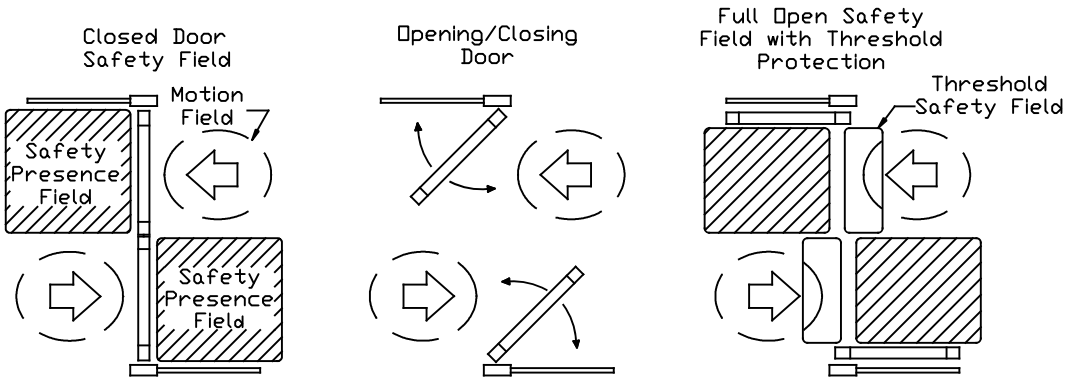
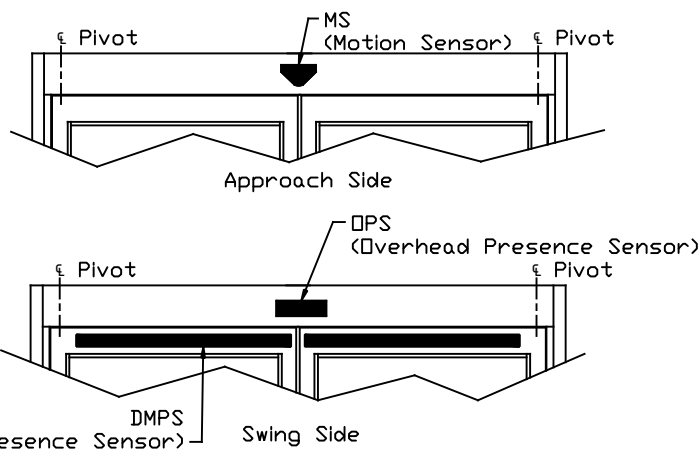
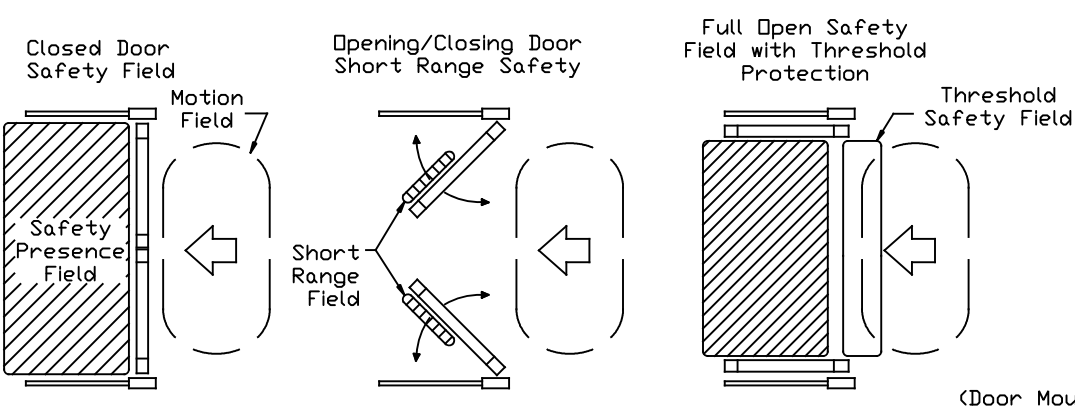


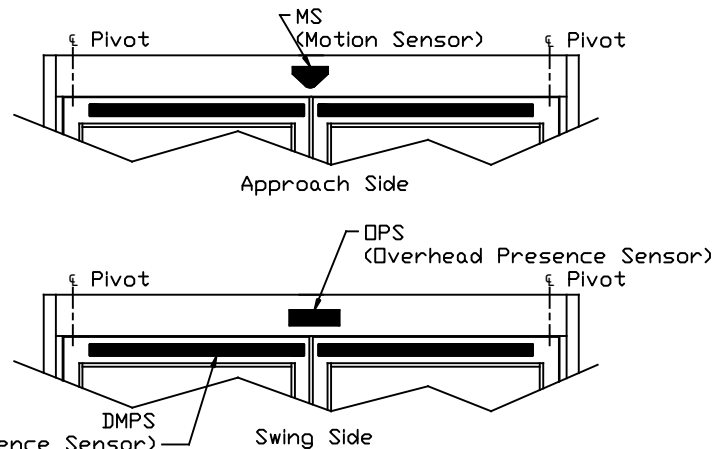
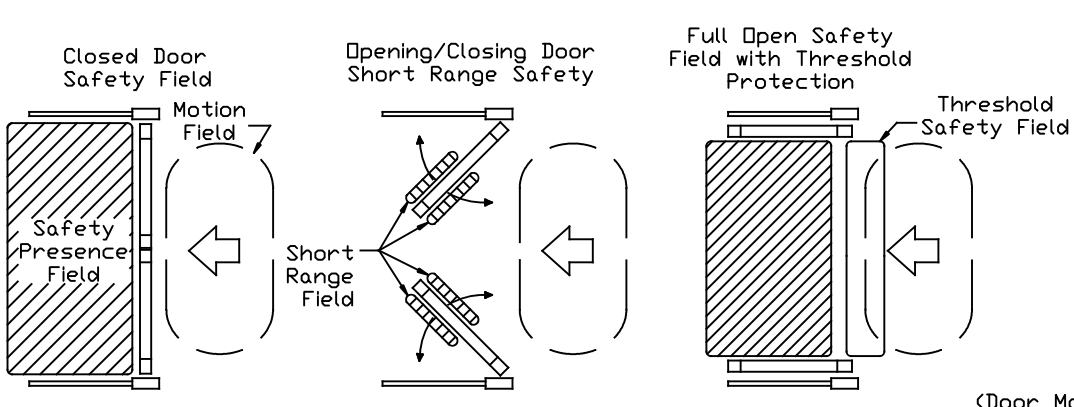
A100-DES SENSOR PATTERNS & PLACEMENT



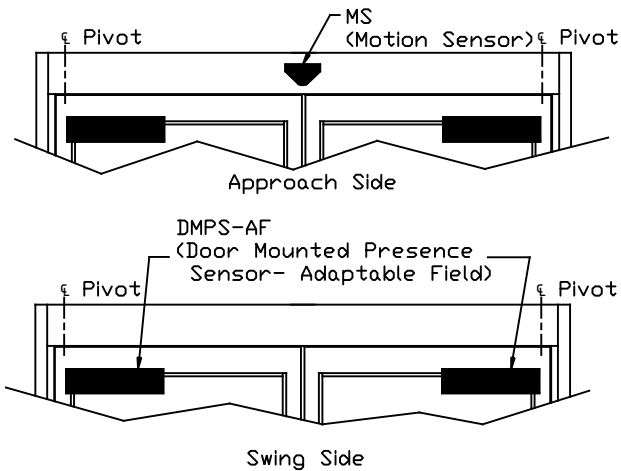
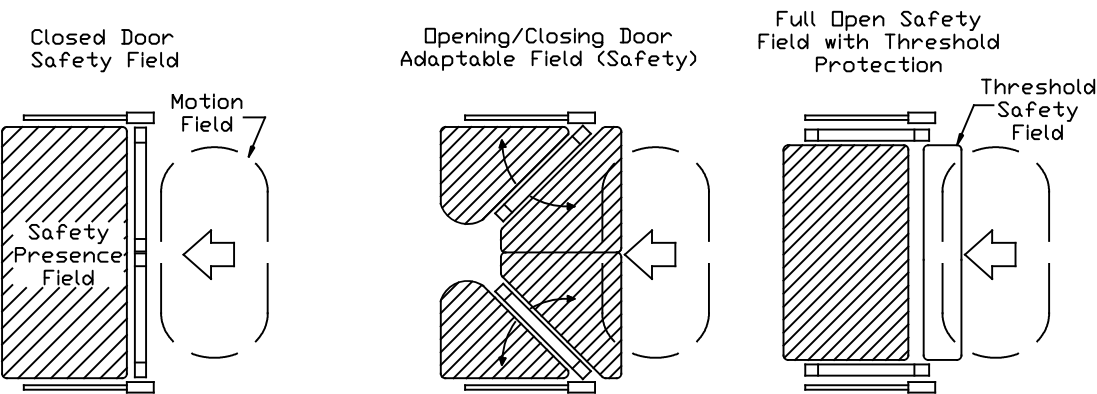
A101-PSW SENSOR PATTERNS & PLACEMENT



A102-PSW SENSOR PATTERNS & PLACEMENT



A202-PSW SENSOR PATTERNS & PLACEMENT



Note:

Sensor Technology:

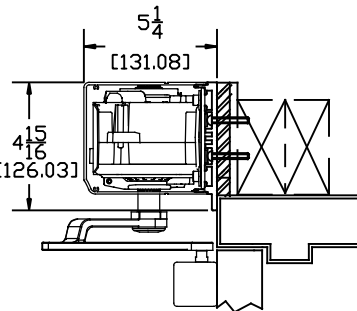
OPS: Active Infrared, safety presence field
DMPS: Active Infrared, short range field
DMPS-AF: Active Infrared, long range Adaptable Field
MS: K Band Microwave, motion field

SSW - Single Swing OHC - Overhead Concealed
PSW - Pair Swing SA - Surface Applied
DES - Double Egress

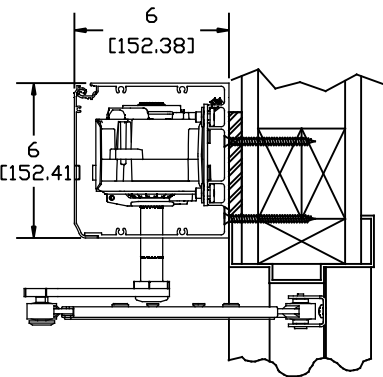
- Kits include plug and play cables, power cables, com cables, external plastic low voltage power transfer door loops, OPS mounts & mounting hardware.
- The A202 kit has optional mounting brackets for the DMPS-AF sensor when mounted on aluminum door.
- Knowing act devices such as press/push plates, see Spec. Desk.

All sensors/end caps with exception of DMPS are black molded impact resistant plastic. The DMPS sensor are black anodized aluminum with black end caps.

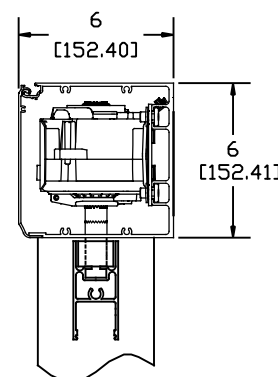
Sensor fields are for illustrative purposes only and are not drawn to scale.



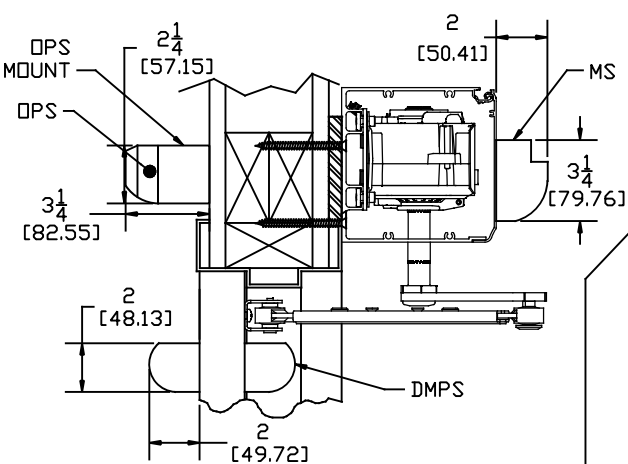
SA SERIES
5 1/4 x 4 15/16



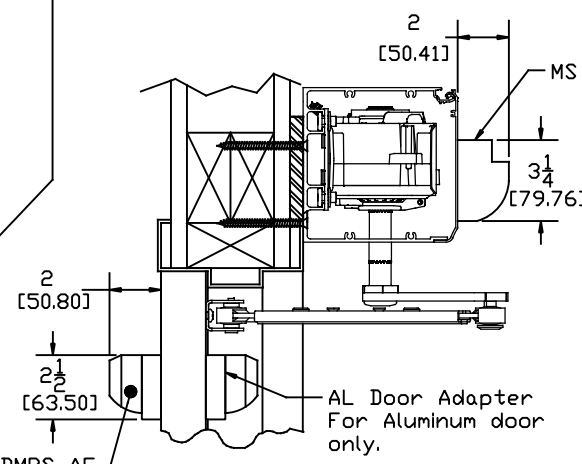
SA SERIES
6 x 6
(OPTION)



OHC SERIES
6 x 6



A101-PSW SENSORS



A202-PSW SENSORS

NOTE:

DRAWING IS DIMENSIONED IN BOTH ENGLISH AND METRIC. REF. AS FOLLOWS: 1" (25.4).

ALL METRIC SIZES ARE IN MILLIMETERS.

DWG NO.	1010265
DRN BY	SS
DATE	1/10/13
CHK BY	JAW
DATE	1/10/13
REV.	2.0
DATE	1/18/18