

FILLER PLATE AS REQUIRED
1/2" (12.7) PLYWOOD, BY OTHERS

NOTE: DRAWING IS DIMENSIONED IN BOTH ENGLISH AND METRIC.
REF. AS FOLLOWS: 1" (25.4). ALL METRIC SIZES ARE IN MILLIMETERS.
* FOR MAXIMUM CURRENT DRAW PER OPERATOR, SEE PRODUCT
SPECIFICATION OR INSTALLATION INSTRUCTIONS.

EXPLANATION OF USE

MANUAL :-

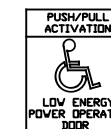
PUSH OR PULL THE DOOR OPEN AND IT
CLOSES AS A NORMAL MANUAL DOOR CLOSER.

AUTOMATIC :-



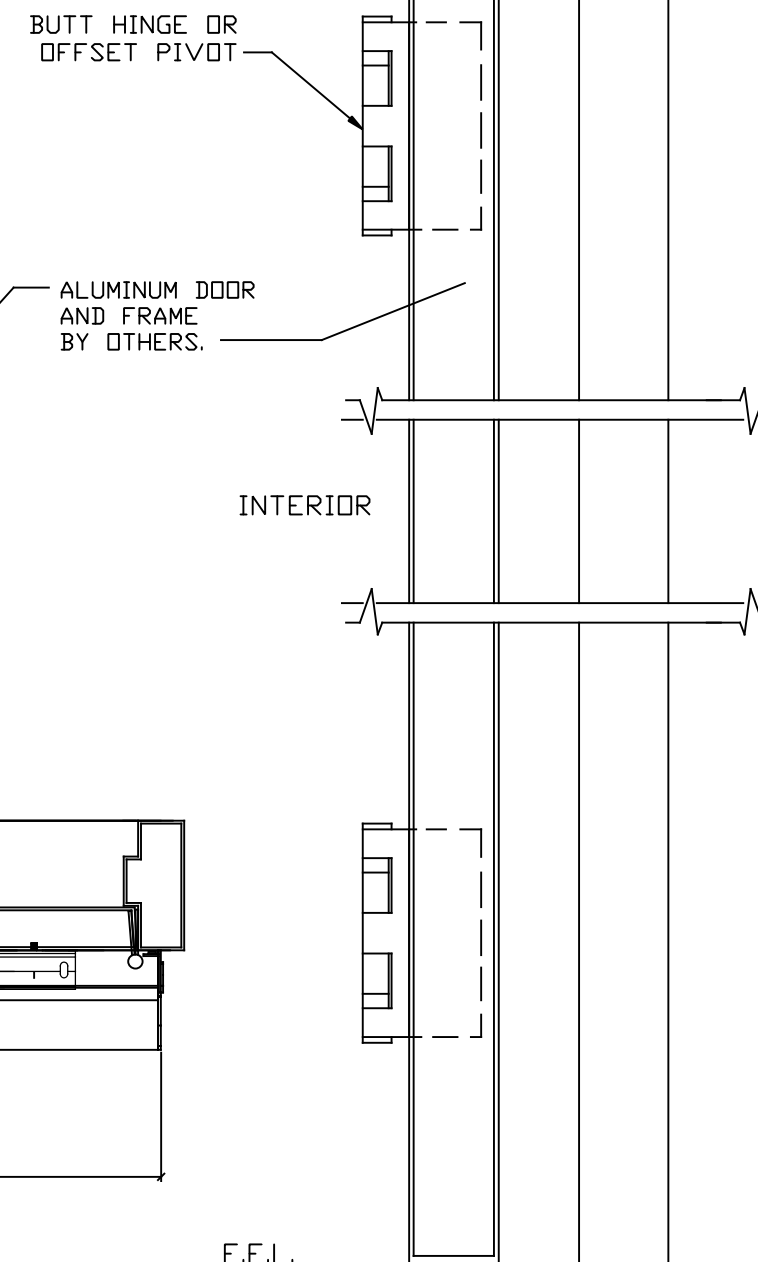
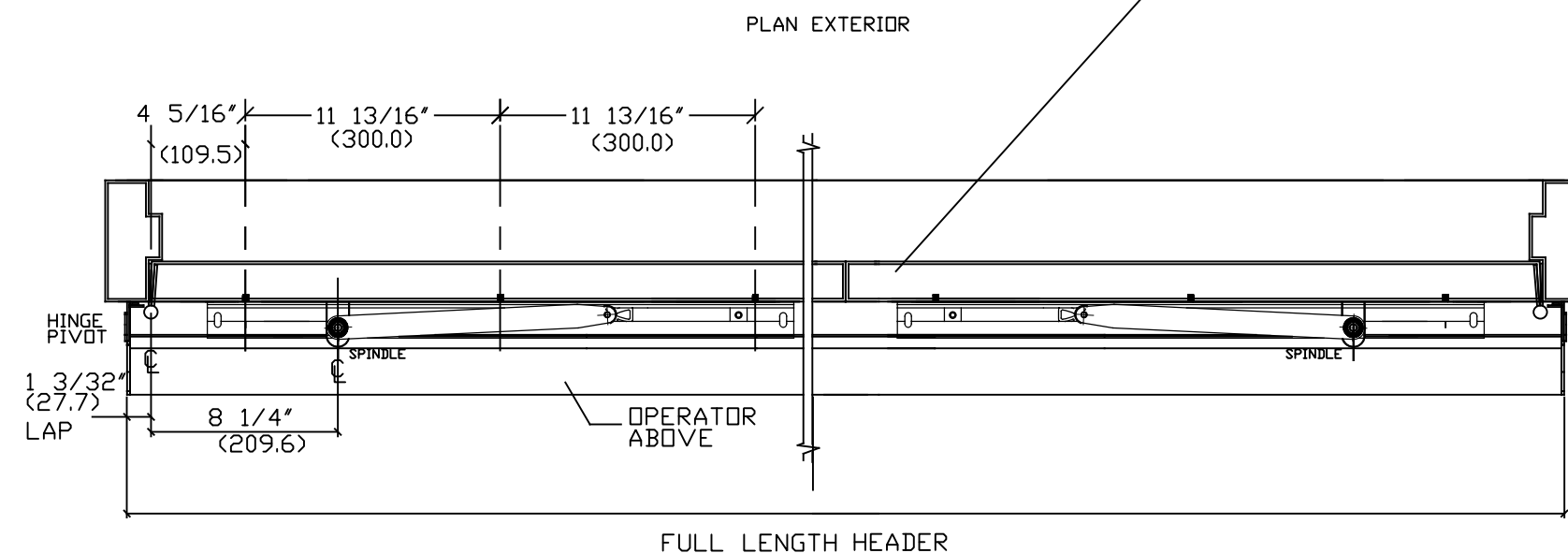
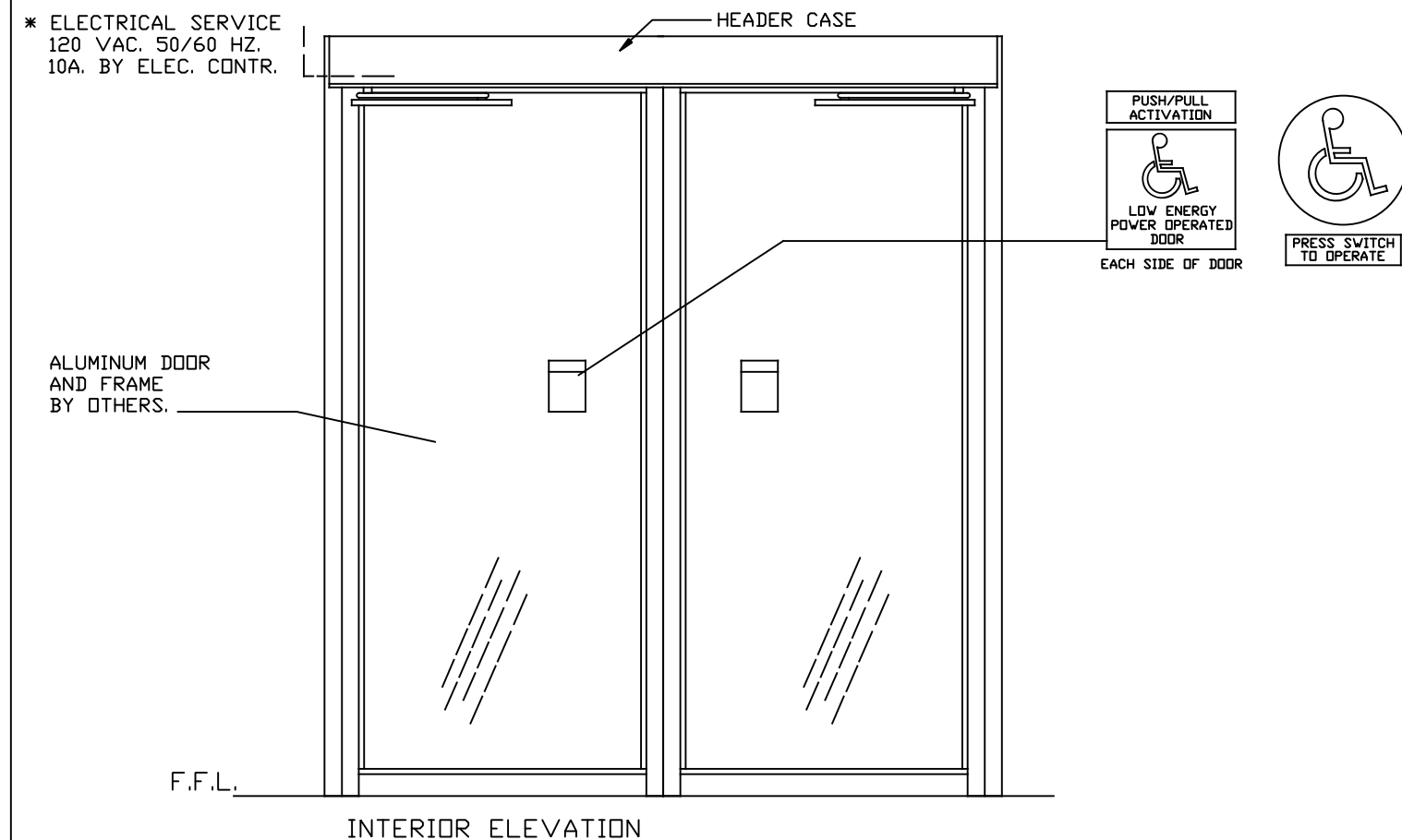
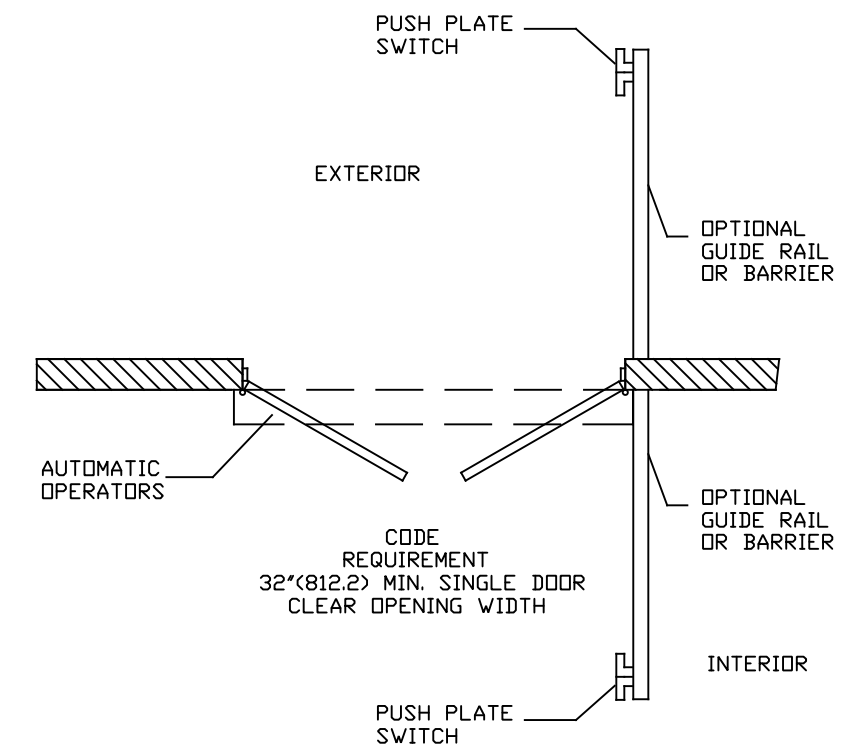
ACTIVATE THE DOOR BY HANDICAPPED
PUSHPLATE AND THE DOOR WILL SLOWLY
POWER OPEN, TIME OUT, AND SLOWLY
CLOSE.

PUSH ACTIVATION :- (OPTIONAL)



PUSH OR PULL THE DOOR AND IT WILL
SLOWLY POWER OPEN , TIME OUT, AND
SLOWLY CLOSE.

NOTE :- OPERATIONAL ADJUSTMENTS TO BE IN ACCORDANCE WITH ANSI/BHMA STANDARD, FOR LOW ENERGY POWER OPERATED DOORS.



DWG NO. 1015920											
DRN BY	MHW	DATE	10/26/16	CHK BY	SS	DATE	10/26/16	REV.	2.0	DATE	1/18/18
<h1>ASSA ABLOY</h1>											