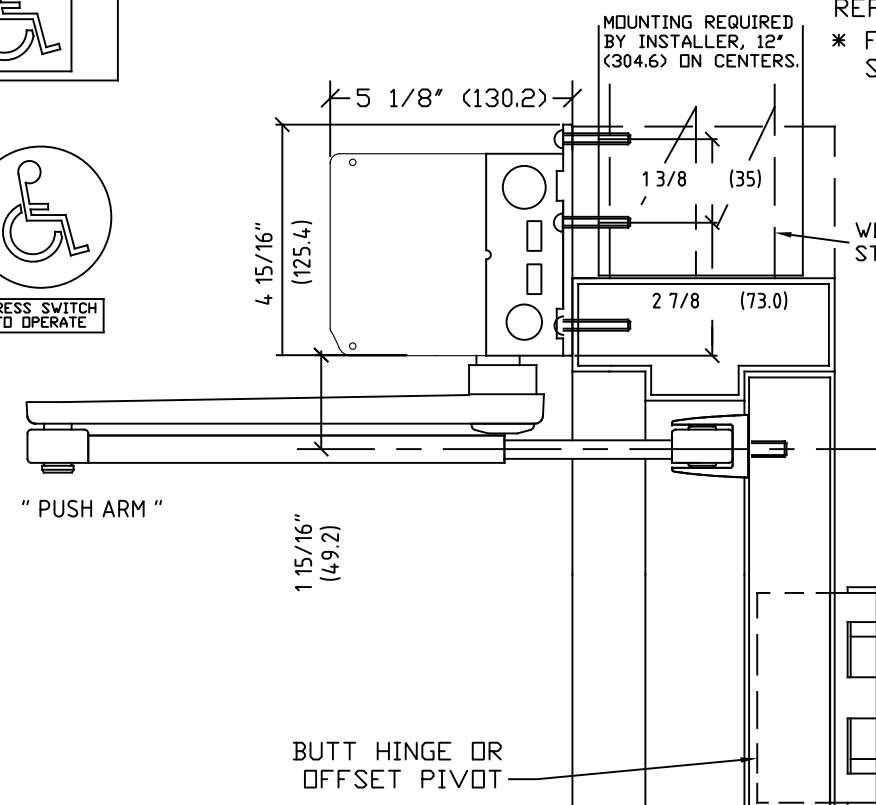
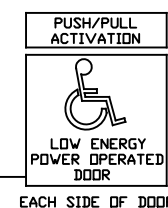
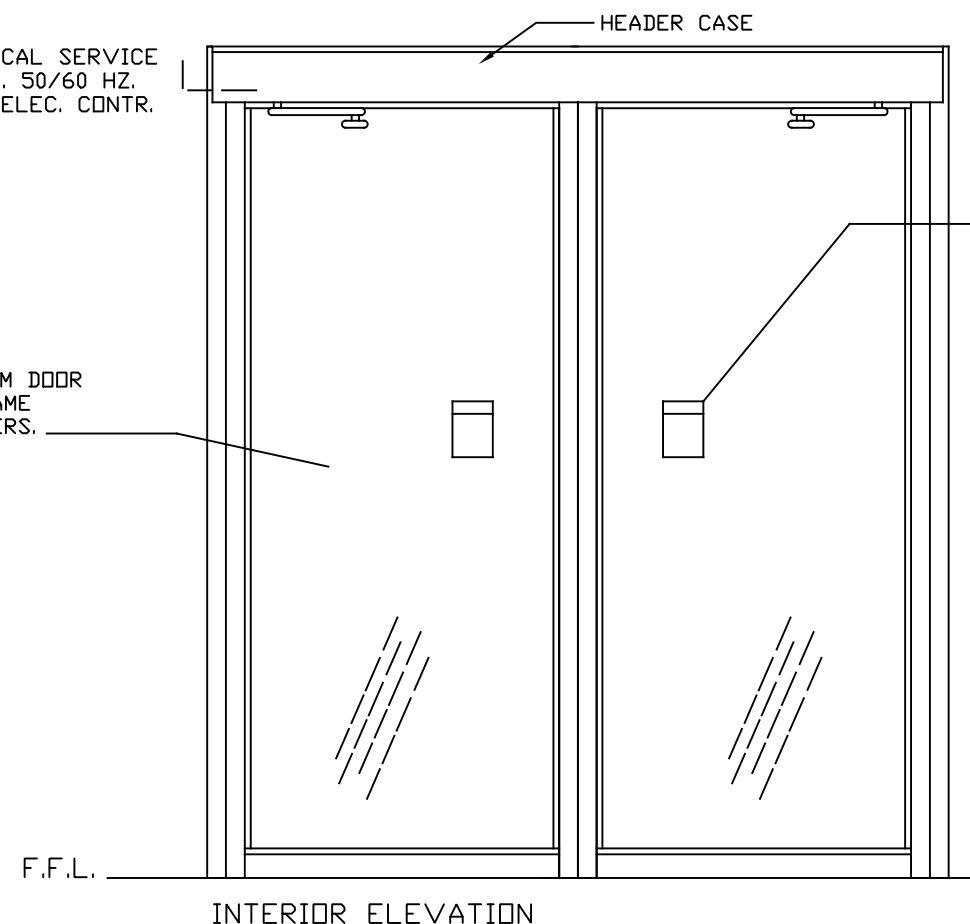




* ELECTRICAL SERVICE
120 VAC. 50/60 HZ.
10A. BY ELEC. CONTR.



NOTE: DRAWING IS DIMENSIONED IN BOTH ENGLISH AND METRIC.
REF. AS FOLLOWS: 1" (25.4). ALL METRIC SIZES ARE IN MILLIMETERS.
* FOR MAXIMUM CURRENT DRAW PER OPERATOR, SEE PRODUCT
SPECIFICATION OR INSTALLATION INSTRUCTIONS.

EXPLANATION OF USE

MANUAL :-

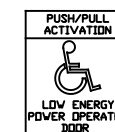
PUSH OR PULL THE DOOR OPEN AND IT
CLOSES AS A NORMAL MANUAL DOOR CLOSER.

AUTOMATIC :-



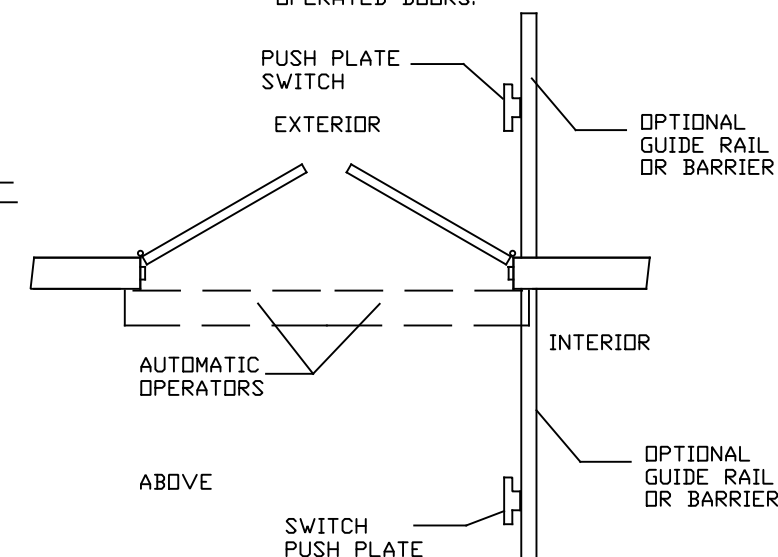
ACTIVATE THE DOOR BY HANDICAPPED
PUSHPLATE AND THE DOOR WILL SLOWLY
POWER OPEN, TIME OUT, AND SLOWLY
CLOSE.

PUSH ACTIVATION :- (OPTIONAL)

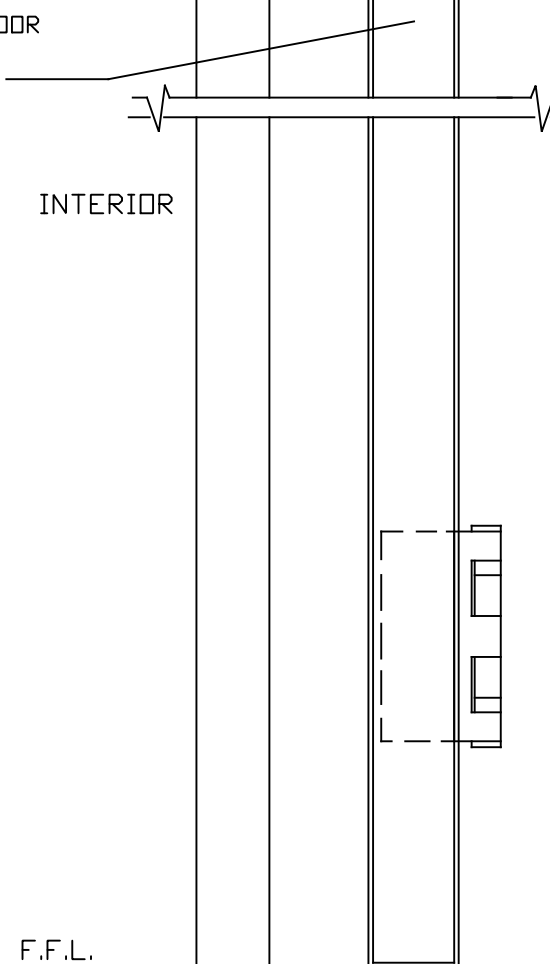
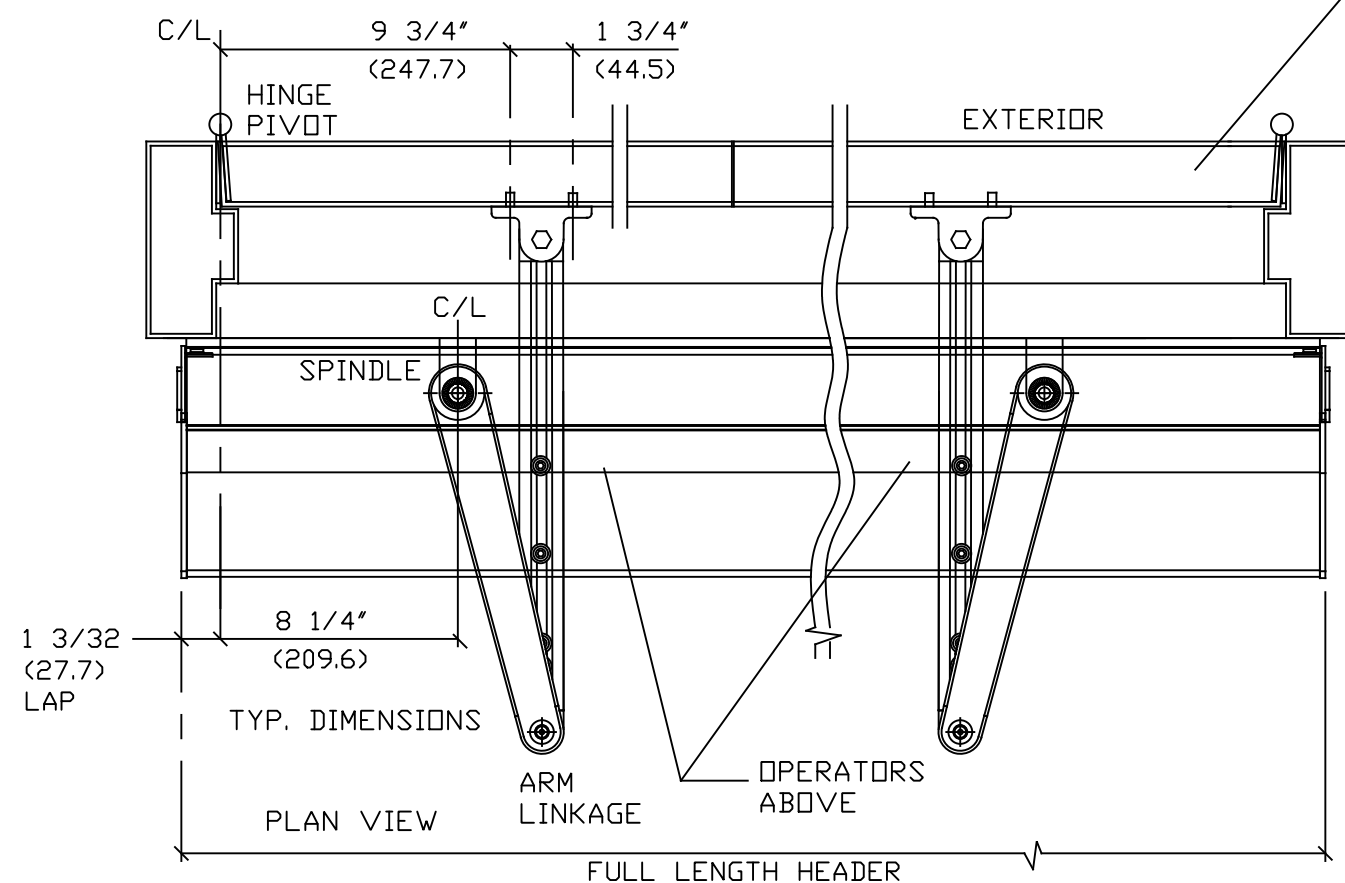


PUSH OR PULL THE DOOR AND IT WILL
SLOWLY POWER OPEN , TIME OUT, AND
SLOWLY CLOSE.

NOTE :- OPERATIONAL ADJUSTMENTS TO BE IN ACCORDANCE WITH ANSI/BHMA STANDARD. FOR LOW ENERGY POWER OPERATED DOORS.



CODE
REQUIREMENT
32"(812.2) MIN. SINGLE DOOR
CLEAR OPENING WIDTH



DWG NO.		1015919	
DRN BY	MHW	DATE	4/24/08
CHK BY	SS	DATE	10/26/16
REV.	3.0	DATE	10/19/20
<div style="border: 1px solid black; height: 100px; width: 100%;"></div>			
<div style="border: 1px solid black; height: 100px; width: 100%;"></div>		<div style="border: 1px solid black; height: 100px; width: 100%;"></div>	
		<div style="border: 1px solid black; height: 100px; width: 100%;"></div>	
		<div style="border: 1px solid black; height: 100px; width: 100%;"></div>	
		<div style="border: 1px solid black; height: 100px; width: 100%;"></div>	
		<div style="border: 1px solid black; height: 100px; width: 100%;"></div>	