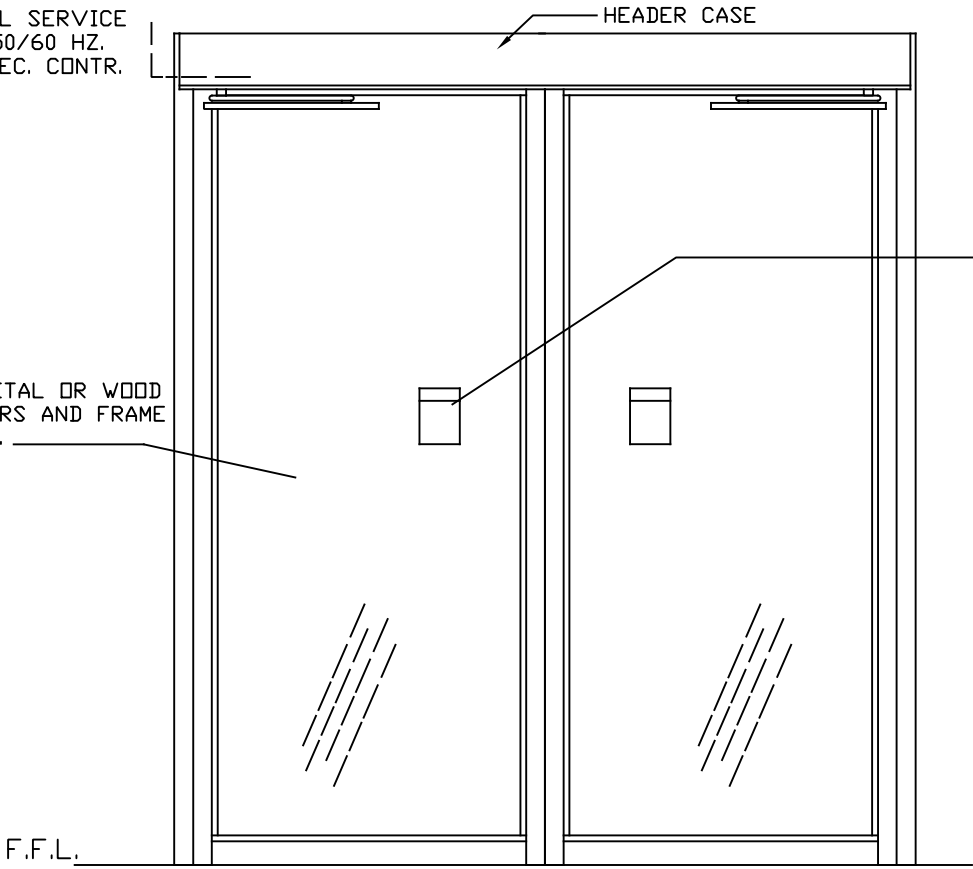




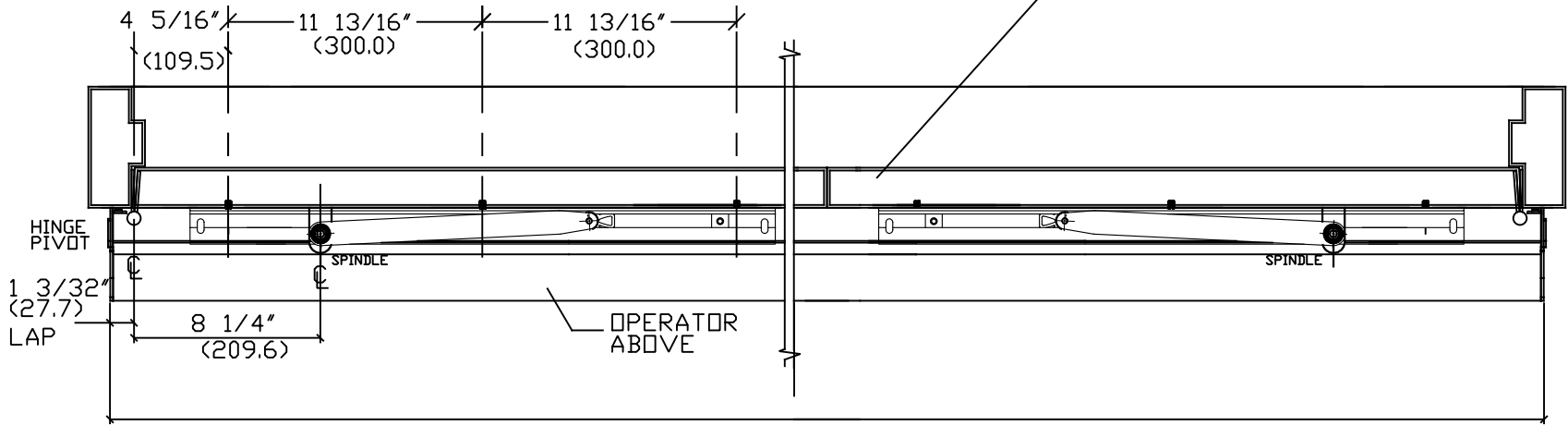
\* ELECTRICAL SERVICE  
120 VAC, 50/60 HZ.  
10A. BY ELEC. CONTR.

HOLLOW METAL OR WOOD  
FLUSH DOORS AND FRAME  
BY OTHERS.

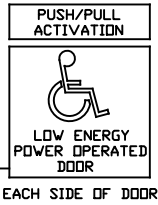


INTERIOR ELEVATION

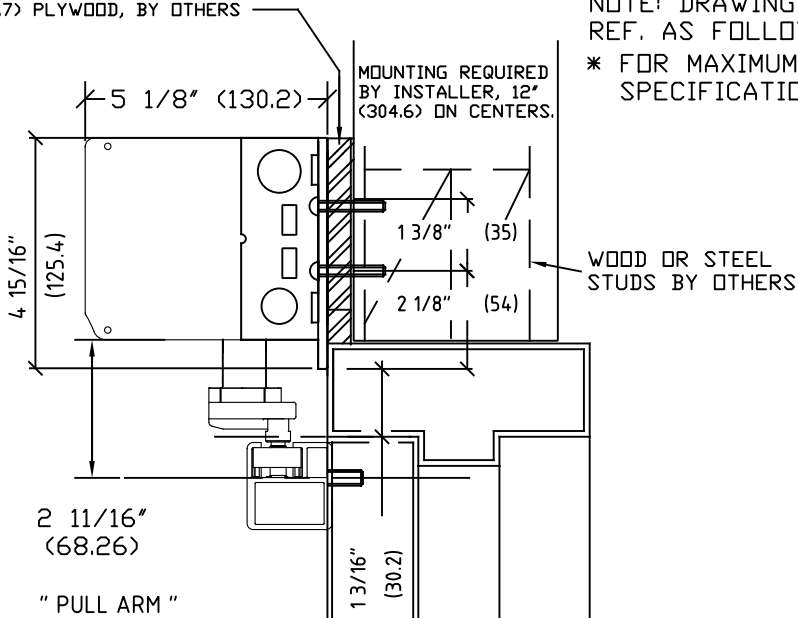
PLAN EXTERIOR



FULL LENGTH HEADER



FILLER PLATE AS REQUIRED  
1/2" (12.7) PLYWOOD, BY OTHERS



INTERIOR

F.F.L.

NOTE: DRAWING IS DIMENSIONED IN BOTH ENGLISH AND METRIC.  
REF. AS FOLLOWS: 1" (25.4). ALL METRIC SIZES ARE IN MILLIMETERS.  
\* FOR MAXIMUM CURRENT DRAW PER OPERATOR, SEE PRODUCT  
SPECIFICATION OR INSTALLATION INSTRUCTIONS.

EXPLANATION OF USE

MANUAL :-

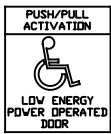
PUSH OR PULL THE DOOR OPEN AND IT  
CLOSES AS A NORMAL MANUAL DOOR CLOSER.

AUTOMATIC :-



ACTIVATE THE DOOR BY HANDICAPPED  
PUSHPLATE AND THE DOOR WILL SLOWLY  
POWER OPEN, TIME OUT, AND SLOWLY  
CLOSE.

PUSH ACTIVATION :- (OPTIONAL)



PUSH OR PULL THE DOOR AND IT WILL  
SLOWLY POWER OPEN , TIME OUT, AND  
SLOWLY CLOSE.

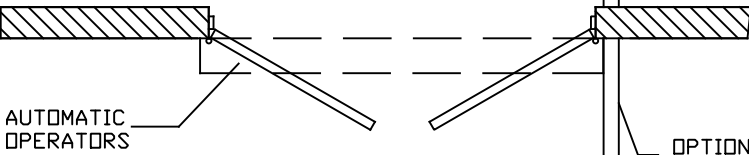
NOTE :- OPERATIONAL ADJUSTMENTS TO BE IN  
ACCORDANCE WITH ANSI/BHMA STANDARD.  
FOR LOW ENERGY POWER  
OPERATED DOORS.

FOR WOOD AND HOLLOW  
METAL DOORS: SHOE SHOULD  
BE MOUNTED TO DOOR USING  
#1/4-20 BINDING HEAD POST  
SCREWS (SEX BOLTS).  
HARDWARE FOR DOORS  
BY INSTALLER.

PUSH PLATE  
SWITCH

EXTERIOR

OPTIONAL  
GUIDE RAIL  
OR BARRIER



CODE  
REQUIREMENT  
32" (812.2) MIN. SINGLE DOOR  
CLEAR OPENING WIDTH

OPTIONAL  
GUIDE RAIL  
OR BARRIER

INTERIOR

PUSH PLATE  
SWITCH

DWG NO.	1015918
DRN BY	MHW
DATE	10/26/16
CHK BY	SS
DATE	10/26/16
REV.	3.0
DATE	10/19/20