



FILLER PLATE AS REQUIRED
1/2" (12.7) PLYWOOD, BY OTHERS

MOUNTING REQUIRED
BY INSTALLER, 12"
(304.6) ON CENTERS.

NOTE: DRAWING IS DIMENSIONED IN BOTH ENGLISH AND METRIC.
REF. AS FOLLOWS: 1" (25.4). ALL METRIC SIZES ARE IN MILLIMETERS.
* FOR MAXIMUM CURRENT DRAW PER OPERATOR, SEE PRODUCT
SPECIFICATION OR INSTALLATION INSTRUCTIONS.

EXPLANATION OF USE

MANUAL :-

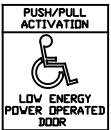
PUSH OR PULL THE DOOR OPEN AND IT
CLOSES AS A NORMAL MANUAL DOOR CLOSER.

AUTOMATIC :-



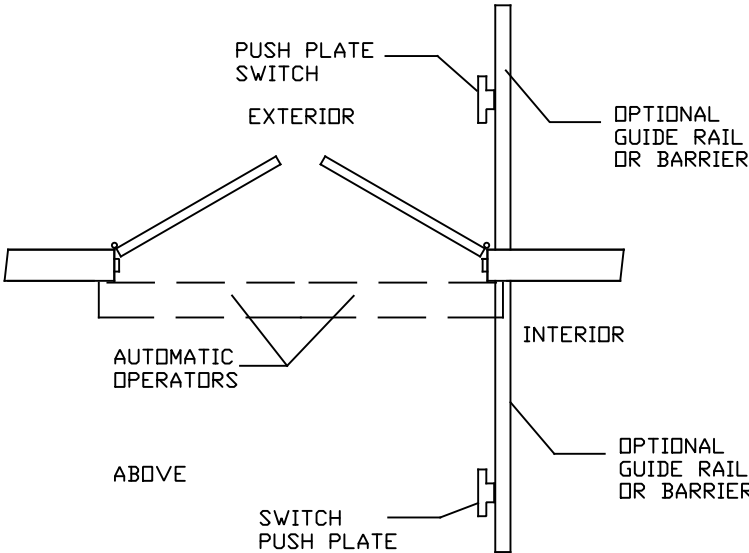
ACTIVATE THE DOOR BY HANDICAPPED
PUSHPLATE AND THE DOOR WILL SLOWLY
POWER OPEN, TIME OUT, AND SLOWLY
CLOSE.

PUSH ACTIVATION :- (OPTIONAL)



PUSH OR PULL THE DOOR AND IT WILL
SLOWLY POWER OPEN , TIME OUT, AND
SLOWLY CLOSE.

NOTE :- OPERATIONAL ADJUSTMENTS TO BE IN
ACCORDANCE WITH ANSI/BHMA STANDARD.
FOR LOW ENERGY POWER
OPERATED DOORS.

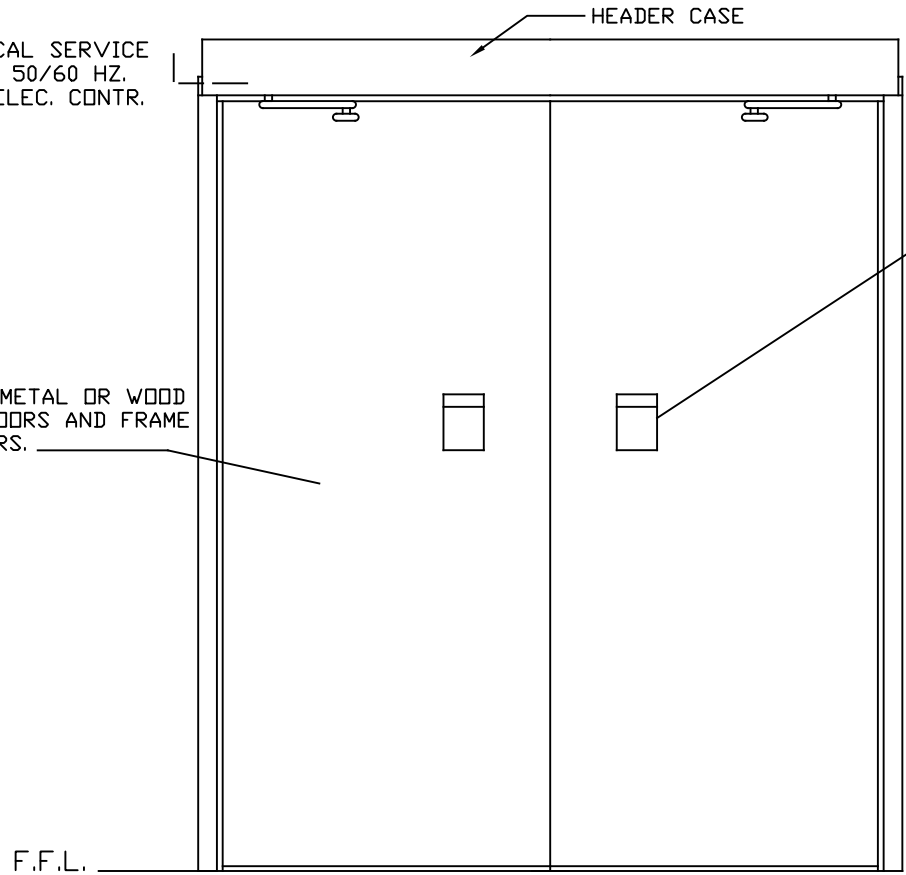


CODE
REQUIREMENT
32"(812.2) MIN. SINGLE DOOR
CLEAR OPENING WIDTH

DWG NO.	1015917
DRN BY	SS
DATE	4/24/08
CHK BY	JAW
DATE	4/24/08
REV.	3.0
DATE	10/19/20

* ELECTRICAL SERVICE
120 VAC. 50/60 HZ.
10A. BY ELEC. CONTR.

HOLLOW METAL OR WOOD
FLUSH DOORS AND FRAME
BY OTHERS.



INTERIOR ELEVATION

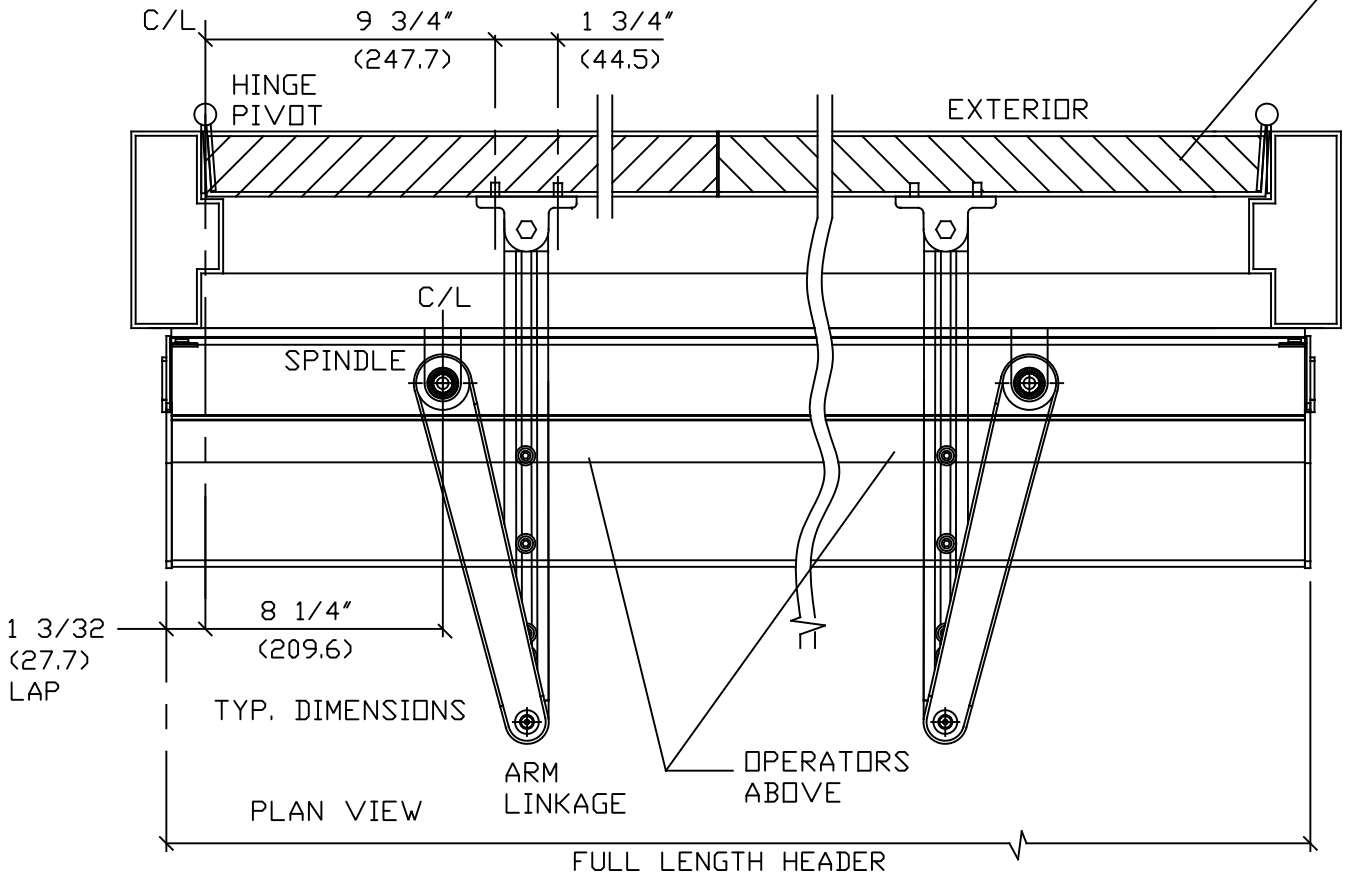
" PUSH ARM "

FOR WOOD AND HOLLOW
METAL DOORS: SHOE SHOULD
BE MOUNTED TO DOOR USING
#1/4-20 BINDING HEAD POST
SCREWS (SEX BOLTS).
HARDWARE FOR DOORS
BY INSTALLER.

HOLLOW METAL OR WOOD
FLUSH DOORS AND FRAME
BY OTHERS.

INTERIOR

F.F.L.



TYP. DIMENSIONS

PLAN VIEW

FULL LENGTH HEADER