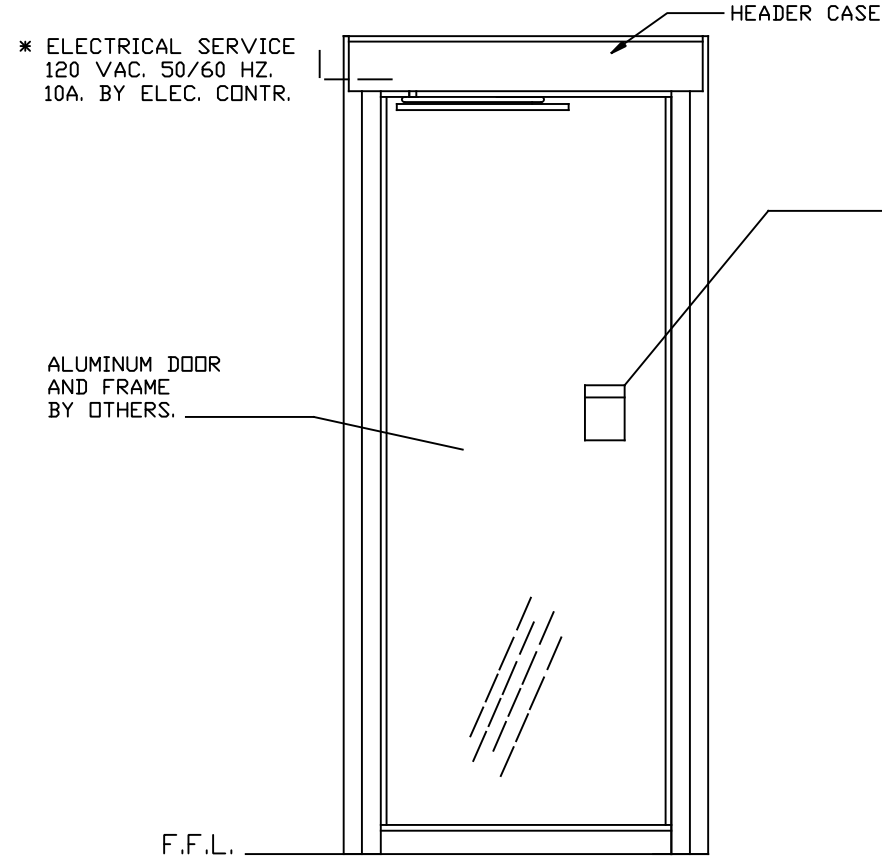
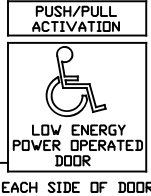




* ELECTRICAL SERVICE
120 VAC, 50/60 HZ.
10A, BY ELEC. CONTR.



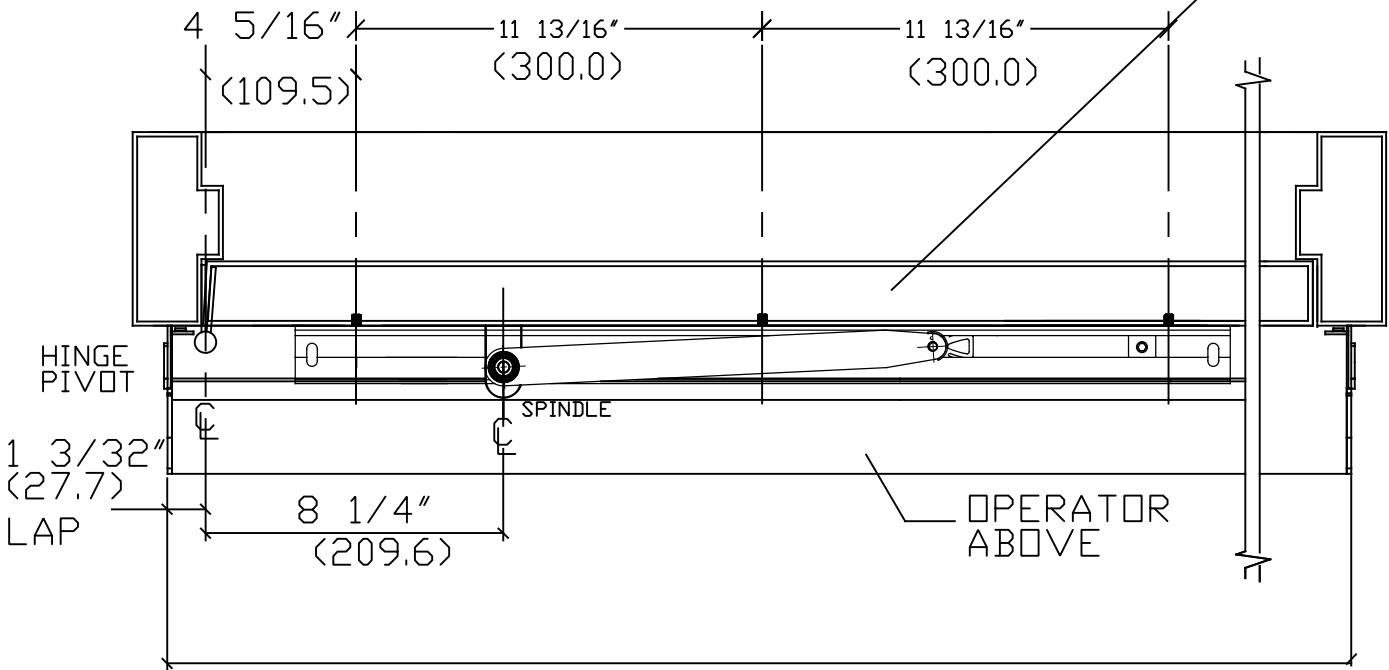
INTERIOR ELEVATION



EACH SIDE OF DOOR

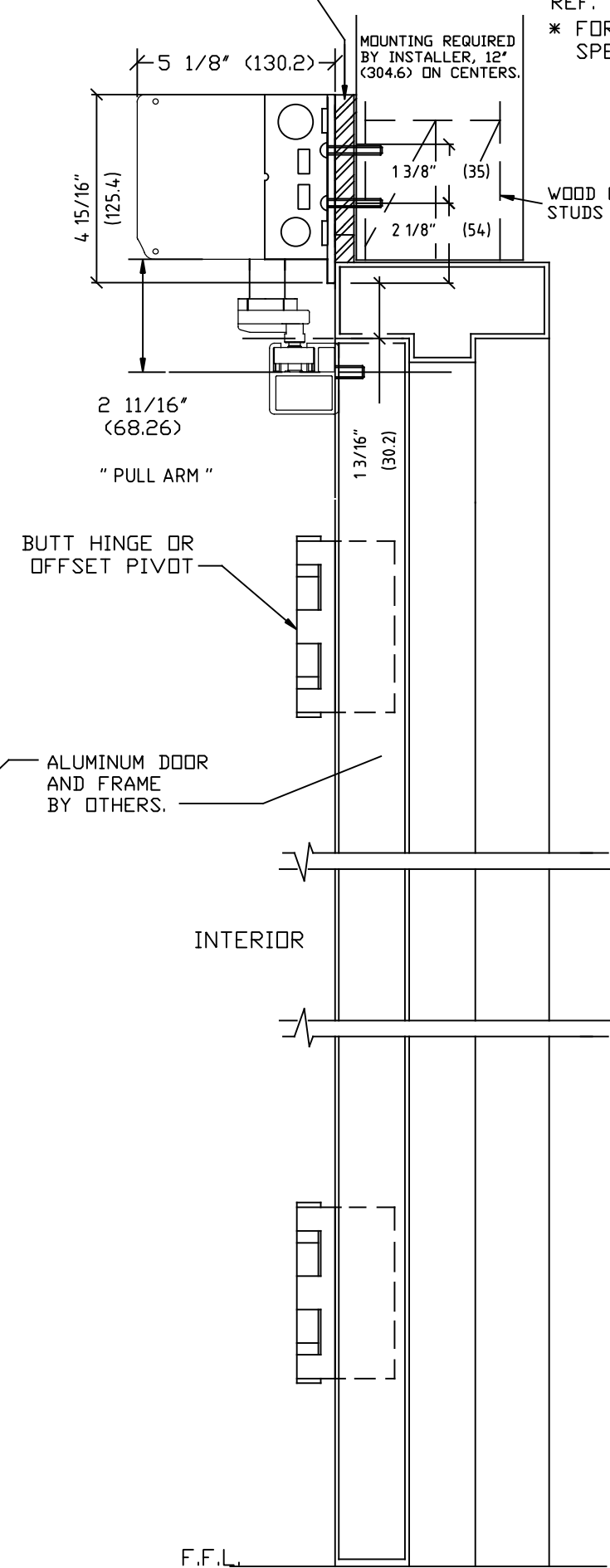
PRESS SWITCH
TO OPERATE

PLAN EXTERIOR



39 1/2" STANDARD HEADER SIZE

FILLER PLATE AS REQUIRED
1/2" (12.7) PLYWOOD, BY OTHERS



NOTE: DRAWING IS DIMENSIONED IN BOTH ENGLISH AND METRIC.
REF. AS FOLLOWS: 1" (25.4). ALL METRIC SIZES ARE IN MILLIMETERS.
* FOR MAXIMUM CURRENT DRAW PER OPERATOR, SEE PRODUCT
SPECIFICATION OR INSTALLATION INSTRUCTIONS.

EXPLANATION OF USE

MANUAL :-

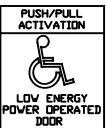
PUSH OR PULL THE DOOR OPEN AND IT
CLOSES AS A NORMAL MANUAL DOOR CLOSER.

AUTOMATIC :-



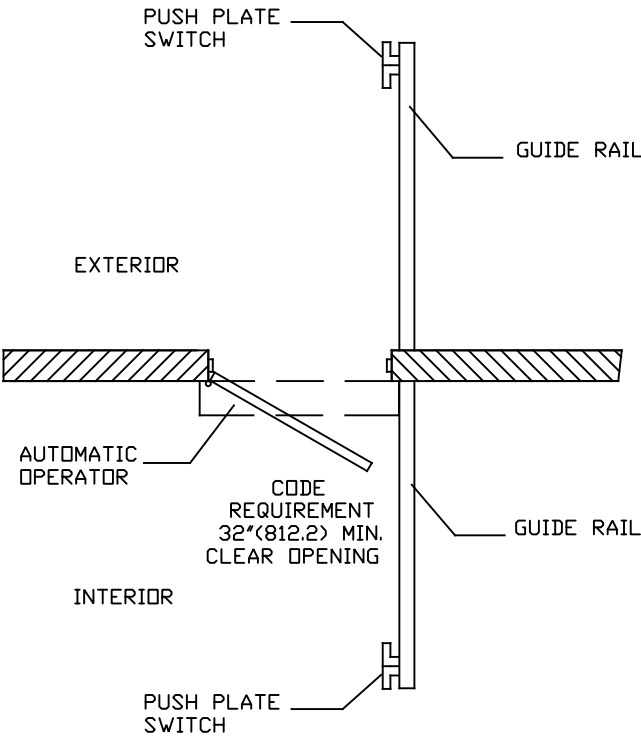
ACTIVATE THE DOOR BY HANDICAPPED
PUSHPLATE AND THE DOOR WILL SLOWLY
POWER OPEN, TIME OUT, AND SLOWLY
CLOSE.

PUSH ACTIVATION :- (OPTIONAL)



PUSH OR PULL THE DOOR AND IT WILL
SLOWLY POWER OPEN , TIME OUT, AND
SLOWLY CLOSE.

NOTE :- OPERATIONAL ADJUSTMENTS TO BE IN
ACCORDANCE WITH ANSI/BHMA STANDARD.
FOR LOW ENERGY POWER
OPERATED DOORS.



DWG NO.	1015914
DRN BY	MHW
DATE	6/23/17
CHK BY	SS
DATE	6/23/17
REV.	3.0
DATE	1/18/18