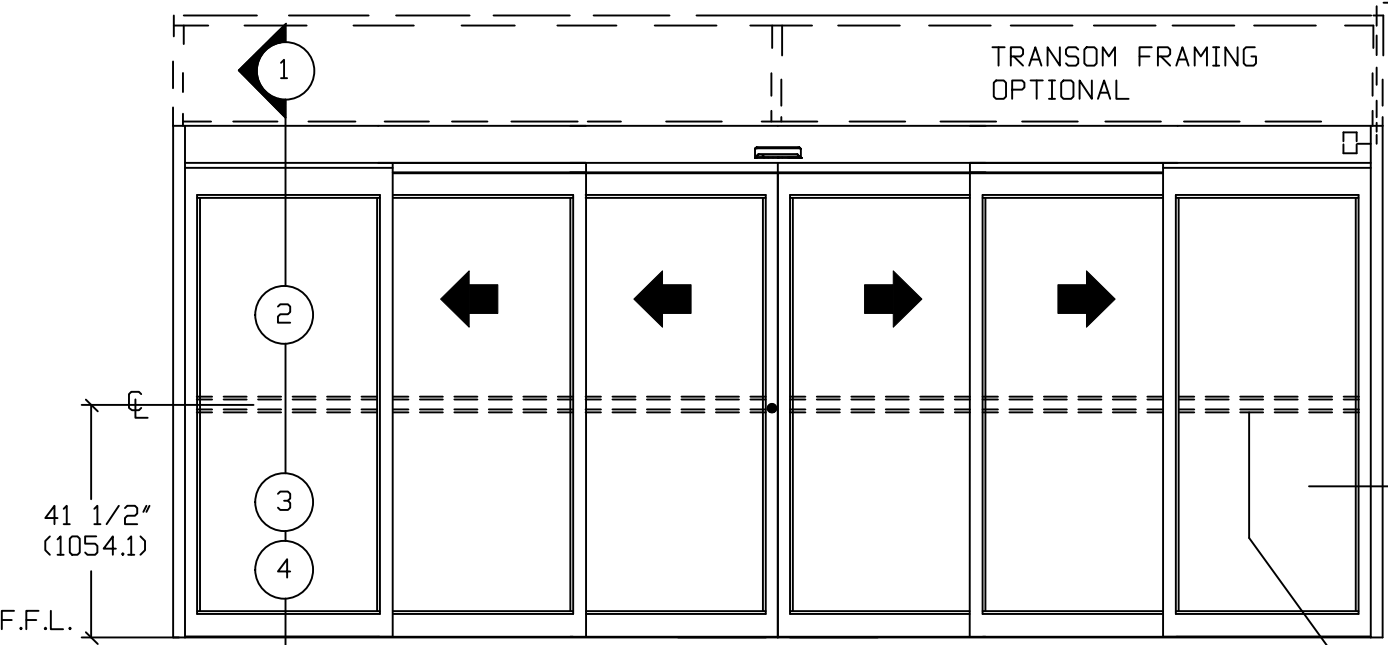




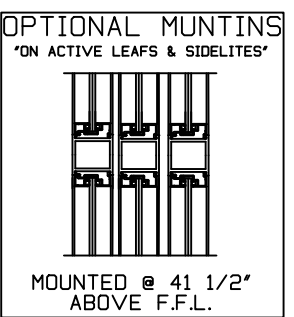
ASSA ABLOY Entrance Systems
1900 Airport Road
Monroe, NC 28110
Phone: 1-866-237-2687
specdesk.na.besam@assaabloy.com

ASSA ABLOY SL500
CONCEALED, FULL BREAKOUT, BI-PART
TELESCOPIC SLIDING DOOR SYSTEM

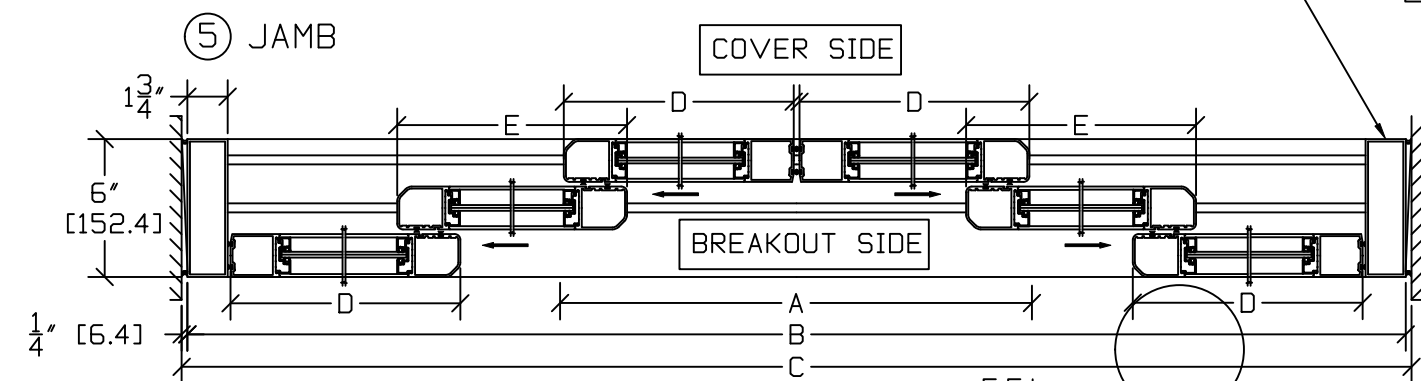
ELECTRICAL SUPPLY
110 VAC. 60 HZ. 10A.
BY ELEC. CONTR. TO
JUNCTION BOX.



BREAKOUT SIDE EXTERIOR ELEVATION

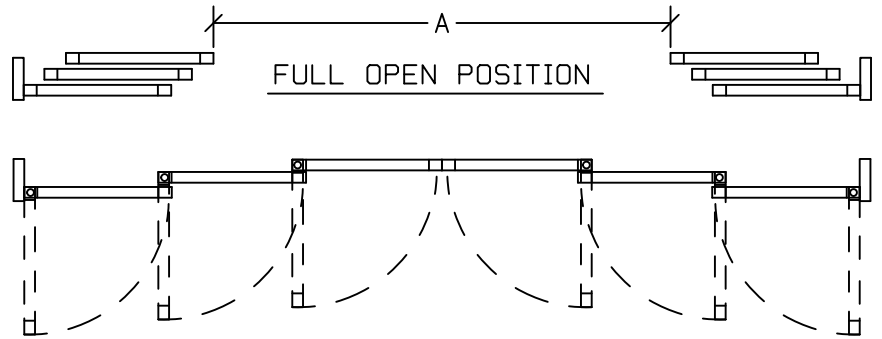


Optional Factory Prep
Switch Location @
74-1/2"H



F.F.L. MUST NOT BE AN INCREASE IN ELEVATION THROUGH BREAKOUT DOOR(S)

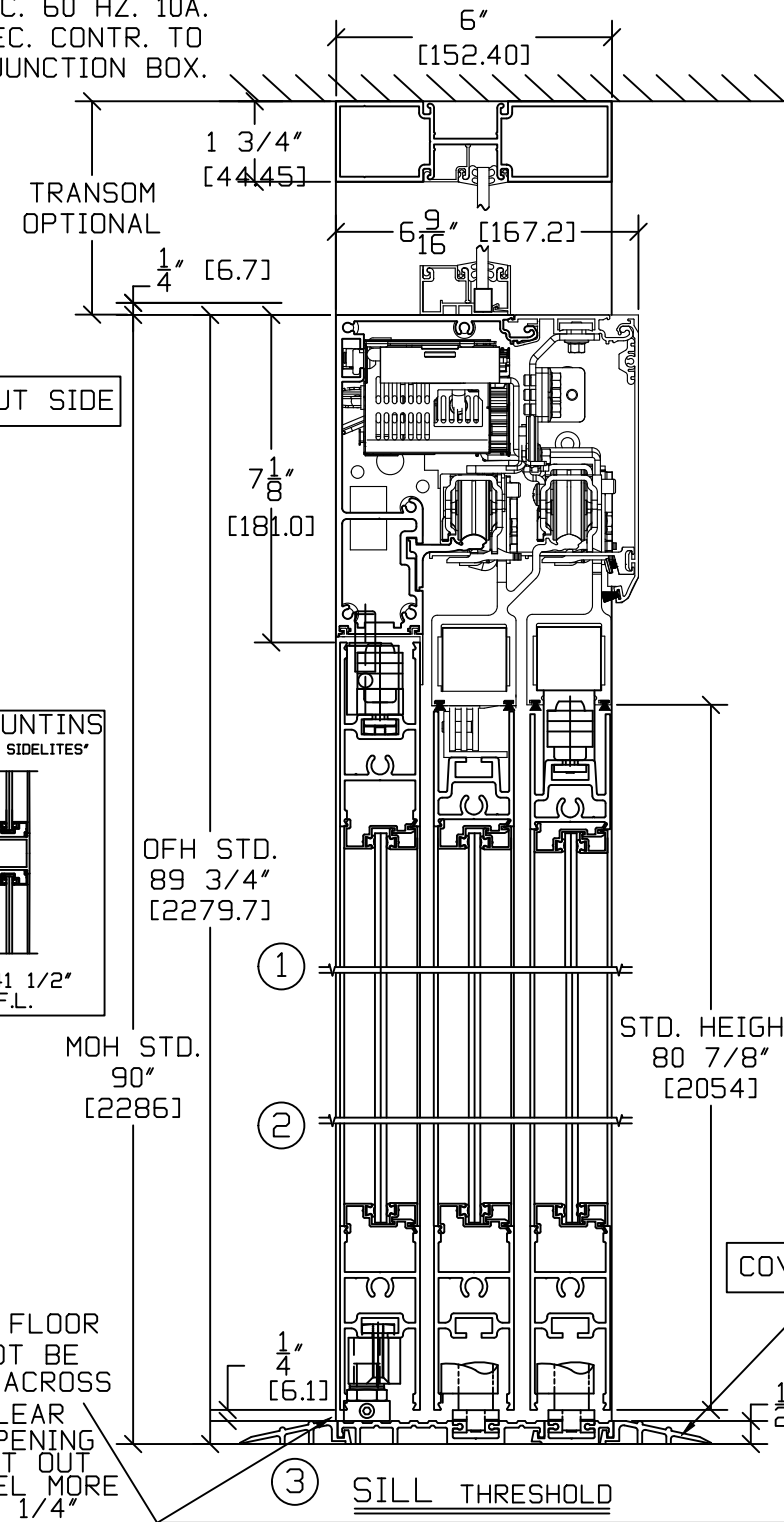
FINISHED FLOOR MUST NOT BE CONCAVE ACROSS THE CLEAR DOOR OPENING AND NOT OUT OF LEVEL MORE THAN 1/4" (TYP)



VIEW FROM BREAKOUT SIDE

SL500 OHC	DOOR OPENING A	OVERALL FRAME WIDTH B	MASONRY OPENING WIDTH C	ACTIVE & SIDELITE LEAF WIDTH D & E
10'	59 3/16" (1503.4)	120" (3048)	120 1/2" (3060.7)	21 3/16" (538.2)
12'	75 3/16" (1909.8)	144" (3657.6)	144 1/2" (3670.3)	25 3/16" (639.8)
14'	91 3/16" (2316.2)	168" (4267.2)	168 1/2" (4279.9)	29 3/16" (741.4)
16'	107 3/16" (2722.6)	192" (4876.8)	192 1/2" (4889.5)	33 3/16" (843)
KEY	(2B/3)-20 13/16 (C-12.7)	(C-12.7)	(B+12.7)	(B/6)+1 3/16" (B/6)+(30.2)
STD. GLASS SIZE KEY**	WIDTH - "D" & "D"		(B/6)-3 5/8" (B/6)-(92.08)	
	WIDTH- "E"		(B/6)-3 7/8" (B/6)-(98.43)	
	HEIGHT		OFH-15 7/8" OFH-(403.2)	

** NARROW STILE RAILS w/ 1/4" GUTTER, NO MUTTINS

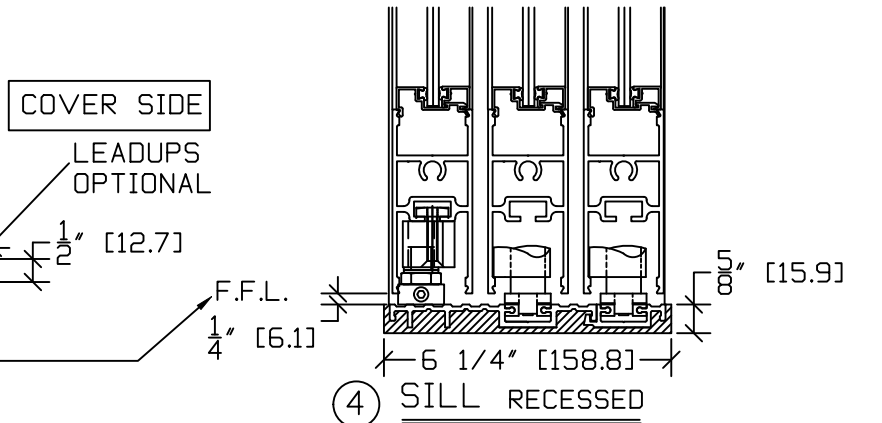
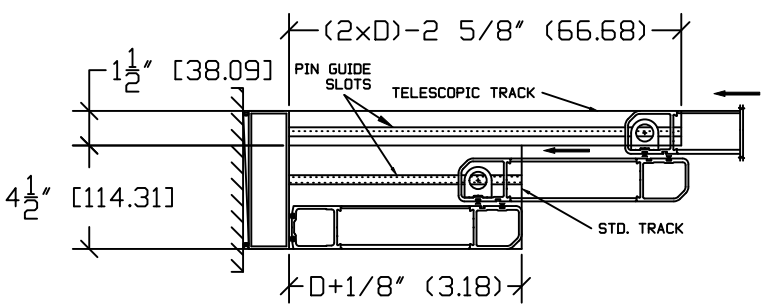


NOTE: THE STANDARD PACKAGE CONSISTS OF:
THE AUTOMATIC OPERATOR & WEATHERSTRIP, FRAMES, DOORS & SIDELITES WITH VERTICAL WEATHERSTRIP, EMERGENCY BREAKAWAY, 2-POINT LOCK, OPTIONAL POSITION SWITCHES (DIGITAL (3 OR 5) OR KEY)), (OFF-EXIT ONLY-AUTO-REDUCED OPENING-HOLD OPEN OROFF, AUTO, HOLD OPEN), MOTION/PRESENCE SENSORS.DUAL BEAMS ARE INCLUDED FOR PACKAGES WITH AN OFW GREATER THAN 12'.

STANDARD FINISH: CLEAR- AA-M12C22A41, CLASS 1, .018 MM.
DARK BRONZE- AA-M12C22A44, CLASS 1, .018 MM.
SPECIAL FINISHES ARE AVAILABLE.

THIS PACKAGE WILL ACCEPT UP TO 1"(25.4) INSULATED GLASS. GLASS OVER 1/4" WILL REQUIRE THE HEADER TO BE SUPPORTED FROM ABOVE.
NOTE DRAWING IS DIMENSIONED IN BOTH ENGLISH AND METRIC REF. AS FOLLOWS 1" (25.4) ALL METRIC SIZES ARE MILLIMETERS.
FOR MAXIMUM CURRENT DRAW PER OPERATOR, SEE PRODUCT SPECIFICATION, INSTALLATION INSTRUCTIONS, OR THE UL LABEL ON THE EQUIPMENT.
REFER TO RELEVANT (LOCAL, STATE, NATIONAL OR AHJ) BUILDING CODE FOR MIN DOOR HEIGHT & MIN/MAX WIDTH ALLOWABLE FOR EGRESS REQUIREMENT IN CONJUNCTION WITH TABLE BELOW.

RECESSED TRACK CUT LENGTHS



DWG NO. 1010833	DRN BY CLW	DATE 6/4/13	CHK BY SS	DATE 6/4/13	REV. 5.0	DATE 01/18/22
-----------------	------------	-------------	-----------	-------------	----------	---------------

