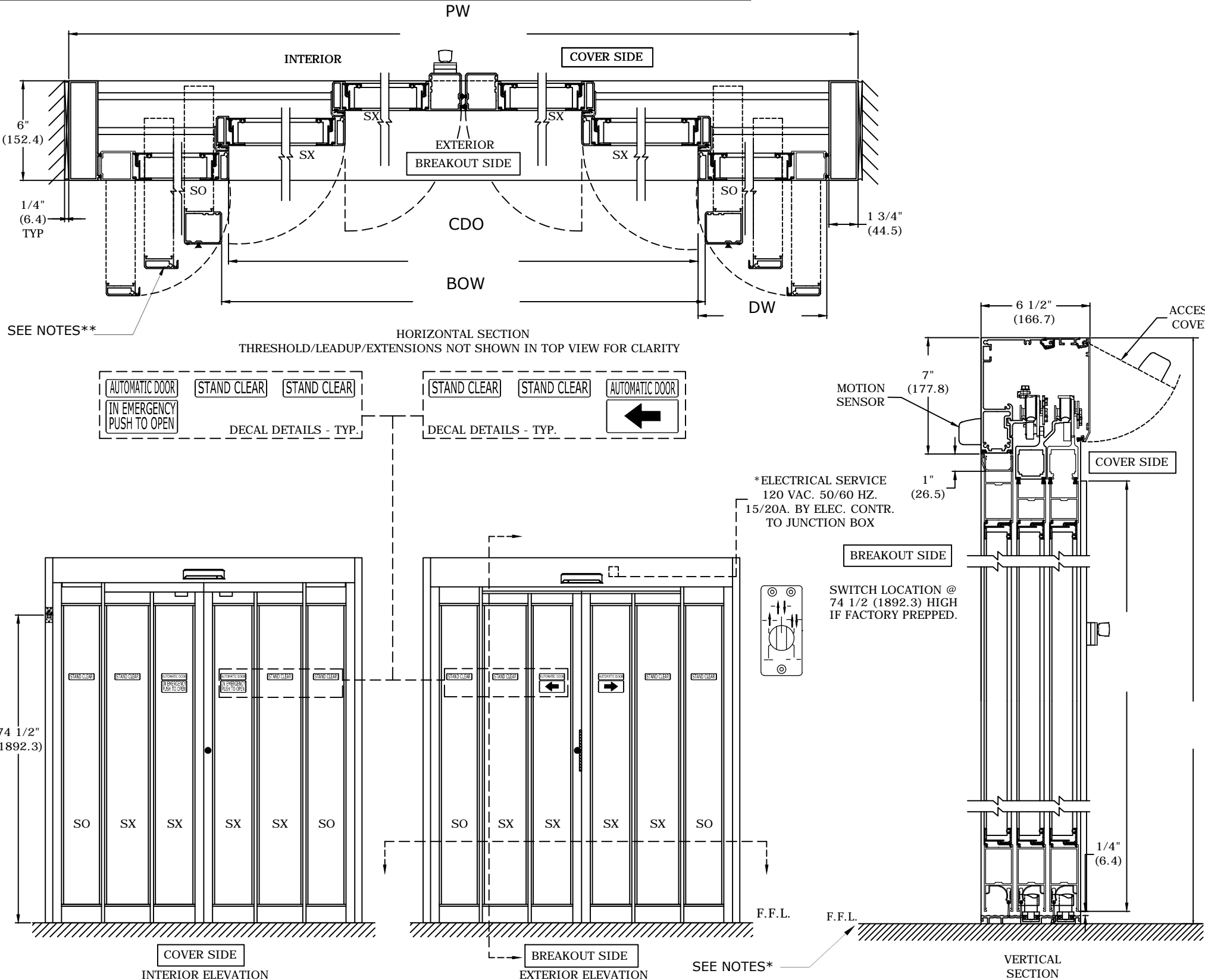


ASSA ABLOY

Welcome to the ASSA ABLOY Smart Drawing!

Below are instructions for using the ASSA ABLOY Smart Drawing:

- Save the file to your computer, avoid opening using web based software (Internet Explorer, Firefox, etc).**
- Open the file using an Adobe product (Adobe Reader, Adobe Professional, etc).**
- Go to page 2 of this file.**
- Change selections/dimensions based on your order using the pull down, check boxes and dimension boxes.**
- Click on the 'Update' button so that the picture will update based on your selections.**
- If you need to reset the defaults of the drawing, just click on the 'Reset' button.**
- Once you have completed your selections/drawing, add your initials in the 'DRN BY' box located in title block.**
- Click on the 'Print' button to make the non-editable PDF file to send to the customer. The date will automatically be added to the drawing.**
- When the Print dialog box comes up on the screen, select a PDF writer (Adobe Pro, CutePDF Writer, etc) to print the file.**
- Re-name the file, only print page 2 of the file and save it to the location you desire.**
- You will not be able to save this editable document after you have opened it, please only use the 'Print' button to save a non-editable PDF file.**
- You should now have a non-editable PDF file to send to your customer, it is that easy!**



Notes:

EcoDoor Seals, concealed sweeps, magnetic catch, replaceable core cylinder (if supplied), interior/exterior armored strike and 1 1/4" glass stops are supplied with this package.

Electric locks, panics, hydraulic closers, dampeners, cylinder guards and I/O boards not available with this package.

Door width tolerance up to +/- 1/16".

*Finished floor must not be concave across the clear door opening and not out of level more than 1/4".

**Finished floor must not be an increase in elevation through breakout door(s) path.

| | | | | | |
|--|------|--------|------|-------|------|
| DWG NO. ASSA ABLOY SMART DRAWING NUMBER: | | | | | |
| DRN BY | DATE | CHK BY | DATE | REV. | DATE |
| CUSTOMER NAME | | | | | |
| JOB NAME | | | | | |
| ASSA ABLOY | | | | NOTES | |
| | | | | | |
| | | | | | |
| | | | | | |