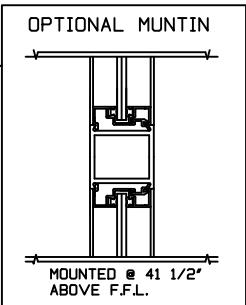
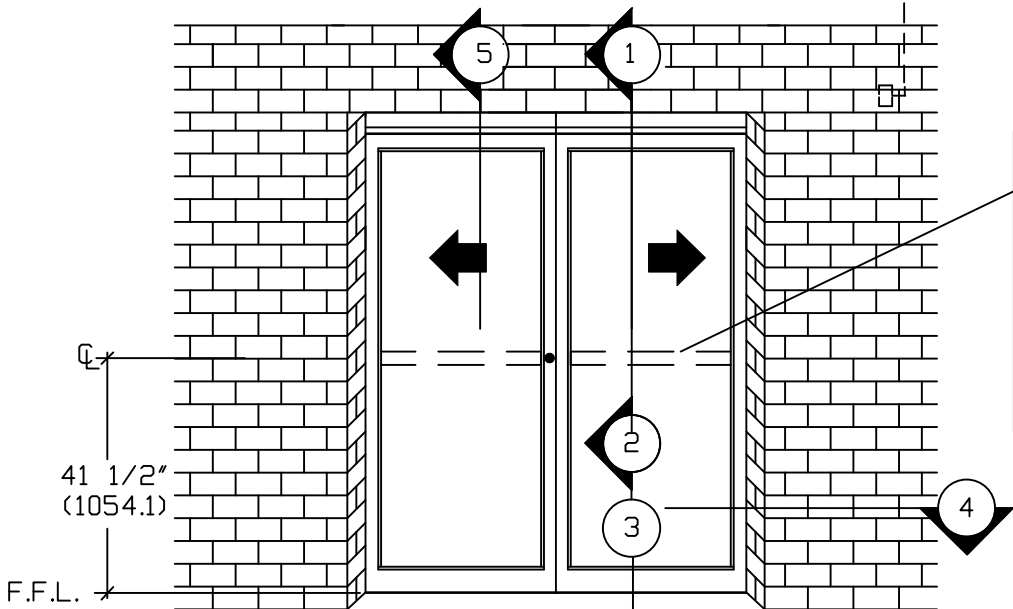


CONSULT YOUR LOCAL AUTHORITY HAVING JURISDICTION (AHJ) IF USING THIS PACKAGE IN PEDESTRIAN APPLICATIONS

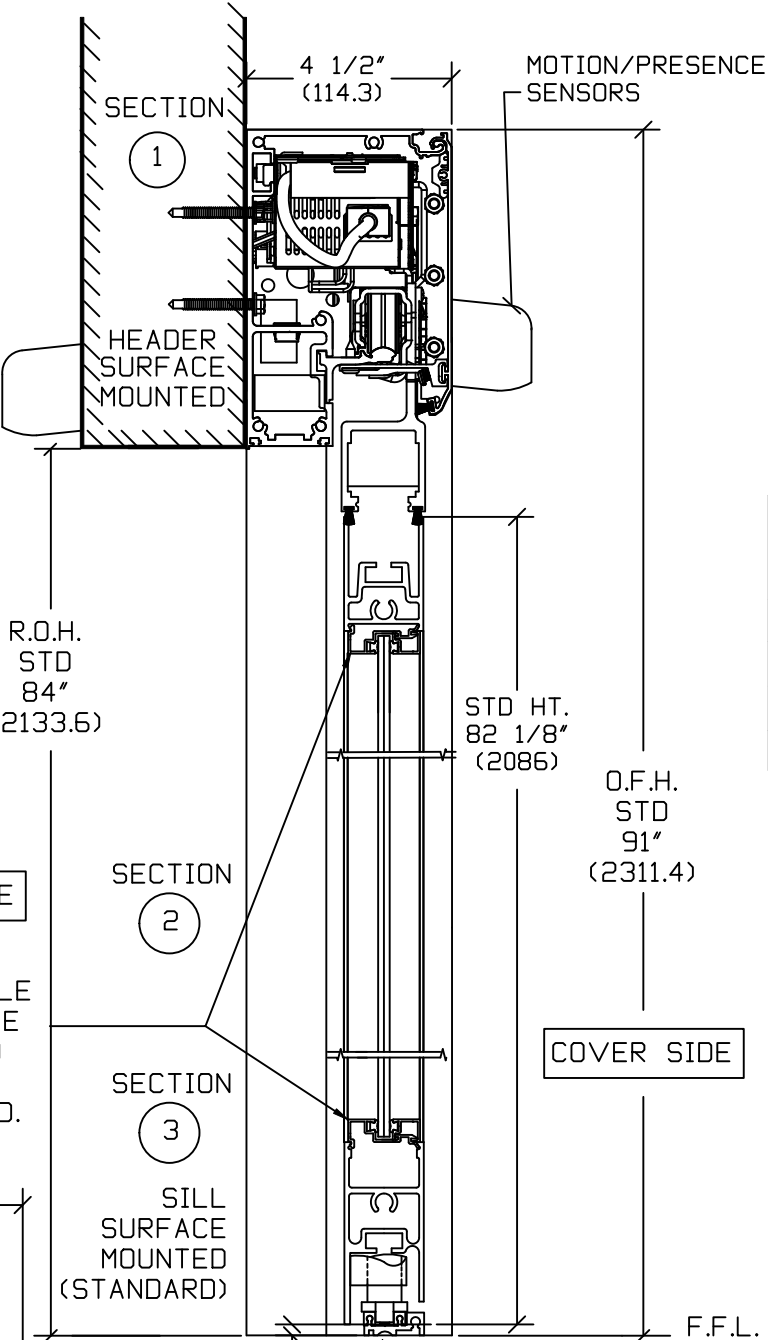
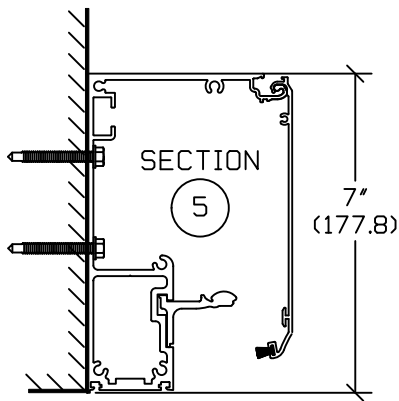
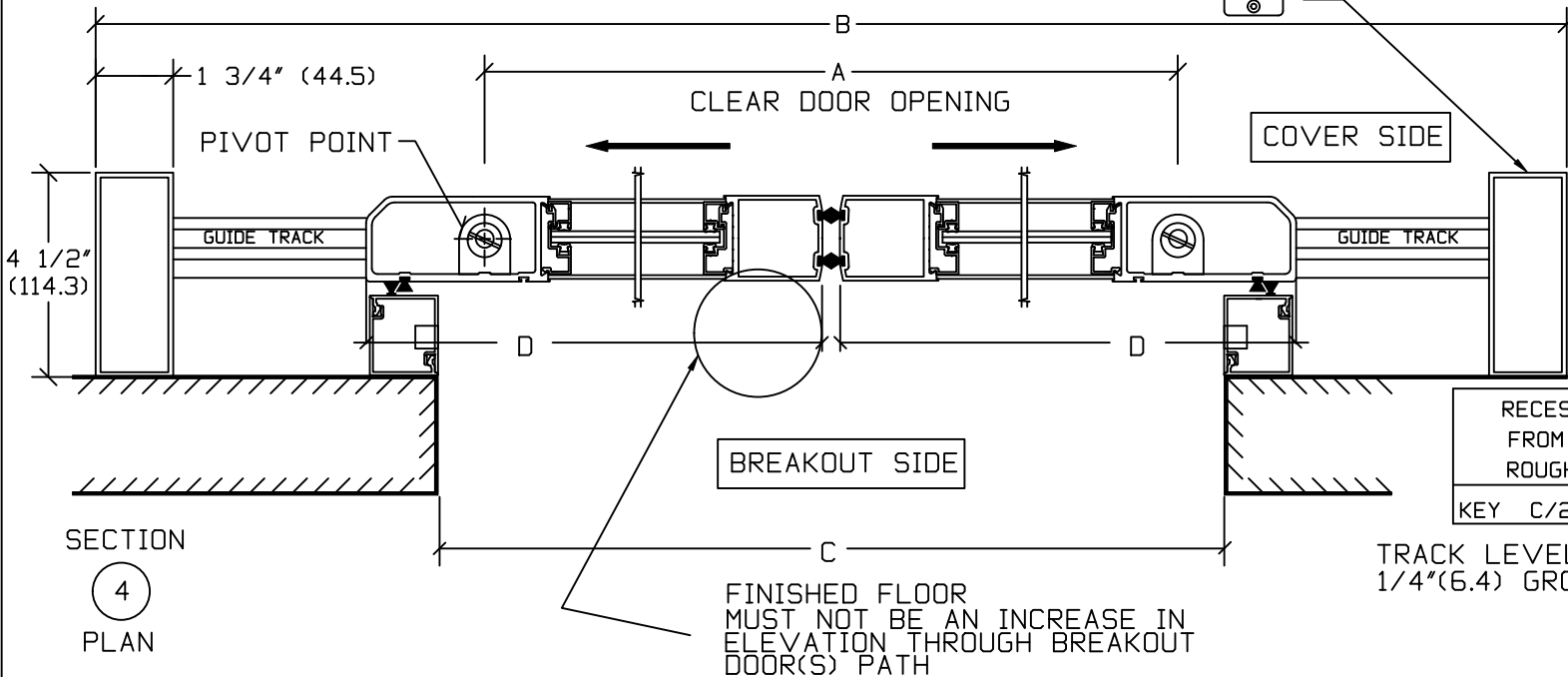
\* ELECTRICAL SERVICE  
120 VAC. 50/60 HZ.  
15/20A. BY ELEC. CONTR.  
TO JUNCTION BOX.



BREAKOUT SIDE

NON REMOVABLE  
SECURITY TYPE  
GLAZING BEAD  
SYSTEM (TYP.)  
1/4" STANDARD.

Optional Factory Prep  
Switch Location @  
74-1 1/2"H



R.O.H.  
STD  
84"  
(2133.6)

STD HT.  
82 1/8"  
(2086)

O.F.H.  
STD  
91"  
(2311.4)

SECTION  
2

SECTION  
3

SILL  
SURFACE  
MOUNTED  
(STANDARD)

COVER SIDE

1/4"  
(6.3)

FINISHED FLOOR  
MUST NOT BE  
CONCAVE ACROSS  
THE CLEAR DOOR OPENING  
AND NOT OUT OF  
LEVEL MORE THAN 1/4"

SECTION  
3

GUIDETRACK  
RECESSED  
(OPTIONAL)  
F.F.L.

2" [49.7]

2 1/4" [56.8]

NOTE: THE STANDARD PACKAGE CONSISTS OF:  
THE AUTOMATIC OPERATOR & WEATHERSTRIP, FRAMES, DOORS WITH  
VERTICAL WEATHERSTRIP, EMERGENCY BREAKAWAY  
& 2-POINT LOCK, OPTIONAL POSITION SWITCHES (DIGITAL (3 OR 5) OR  
KEY (5)), (OFF-EXIT ONLY-AUTO-REDUCED OPENING-HOLD OPEN OR OFF,  
AUTO, HOLD OPEN), MOTION/PRESENCE SENSORS.  
STANDARD FINISH: CLEAR- AA-M12C22A41, CLASS 1, .018 MM.  
DARK BRONZE- AA-M12C22A44, CLASS 1, .018 MM  
SPECIAL FINISHES ARE AVAILABLE.

THIS PACKAGE WILL ACCEPT UP TO 1" (25.4) INSULATED GLASS.

NOTE DRAWING IS DIMENSIONED IN BOTH ENGLISH AND METRIC  
REF. AS FOLLOWS 1" (25.4) ALL METRIC SIZES ARE MILLIMETERS.

\* FOR MAXIMUM CURRENT DRAW PER OPERATOR, SEE PRODUCT  
SPECIFICATION, INSTALLATION INSTRUCTIONS, OR THE UL  
LABEL ON THE EQUIPMENT.

REFER TO RELEVANT (LOCAL, STATE, NATIONAL OR AHJ) BUILDING  
CODE FOR MIN DOOR HEIGHT & MIN/MAX WIDTH ALLOWABLE  
FOR EGRESS REQUIREMENT IN CONJUNCTION WITH TABLE BELOW.

MASONRY OPENING WIDTH C	ACTIVE LEAF WIDTH D	DOOR OPENING A	OVERALL FRAME HEIGHT	ROUGH OPENING HEIGHT	OVERALL FRAME WIDTH B
72" (1828.8)	37 5/16" (947.7)	64 3/4" (1644.7)	89 3/4" (2279.7)	84" (2134)	150 3/8" (3819.5)
84" (2133.6)	43 5/16" (1100.1)	76 3/4" (1949.5)	89 3/4" (2279.7)	84" (2134)	174 3/8" (4429.1)
96" (2438.4)	49 5/16" (1252.5)	88 3/4" (2254.3)	89 3/4" (2279.7)	84" (2134)	198 3/8" (5038.7)
KEY	C/2+1 5/16" C/2+(33.3)	C-7 1/4" C-(184.2)	ROH+7" ROH+(177.8)	OFH-7" OFH-(177.8)	2C+6 3/8" 2C+(161.9)

OFW NOTE: CONSULT FACTORY FOR EXTENDED HEADERS.

STD. GLASS SIZE KEY*	WIDTH	C/2-5 5/16" C/2-(134.9)
	HEIGHT	OFH-15 7/8" OFH-(403.2)

\* 1/4" GUTTER, NO MUTTINS BASED ON MASONRY OPENING

