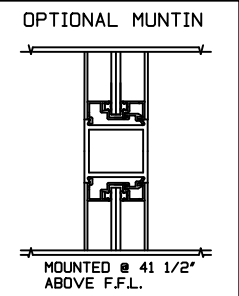
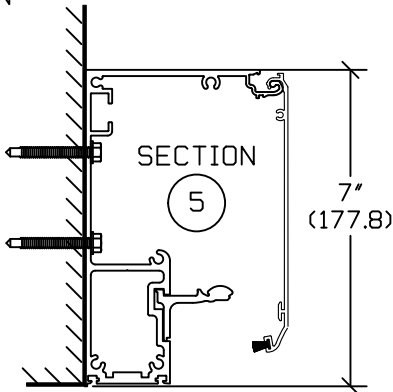
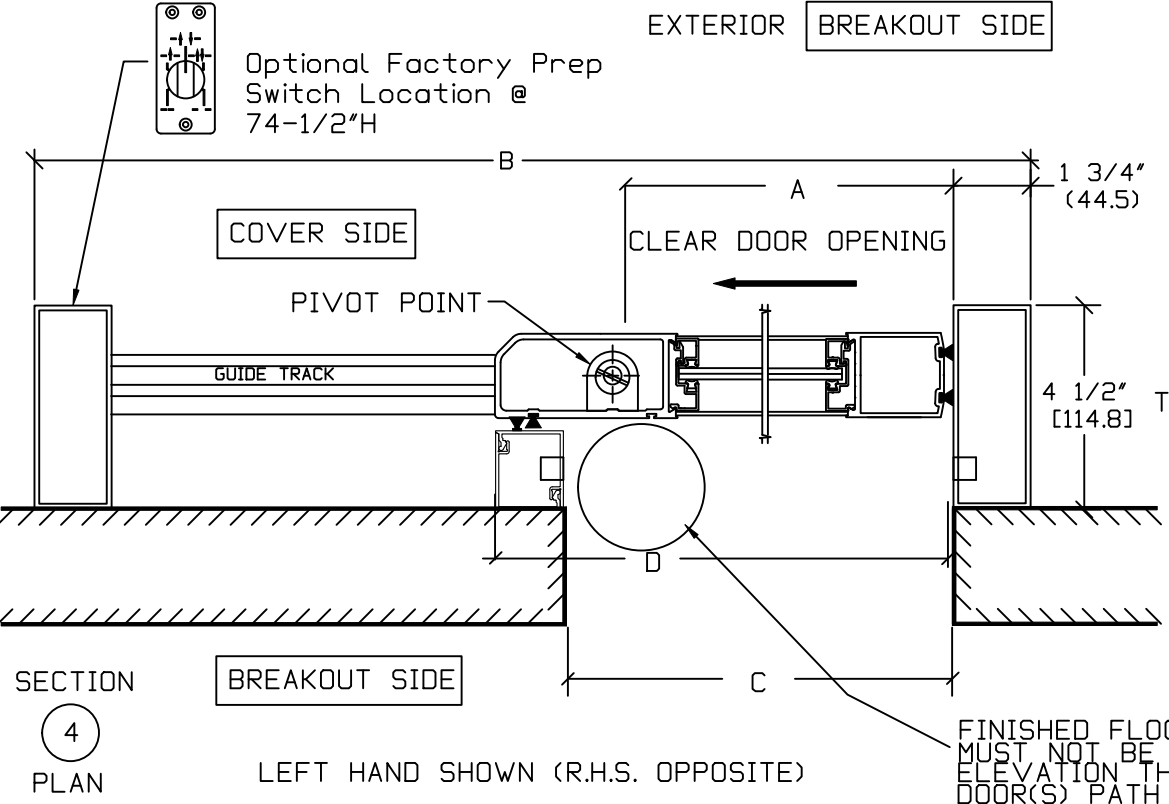
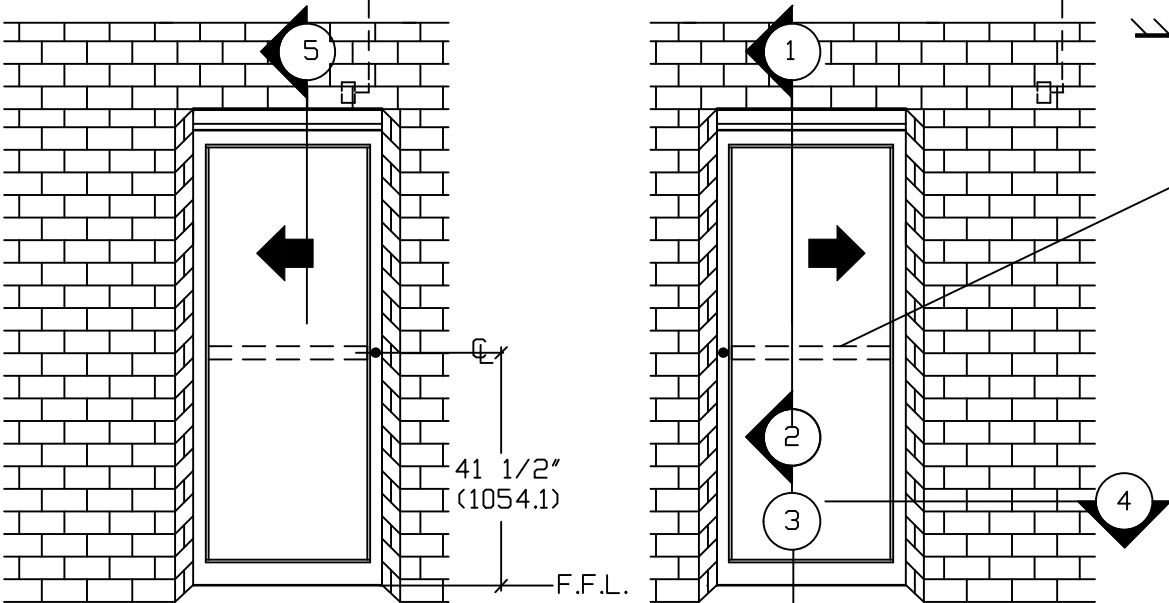


CONSULT YOUR LOCAL AUTHORITY HAVING JURISDICTION (AHJ) IF USING THIS PACKAGE IN PEDESTRIAN APPLICATIONS

* ELECTRICAL SERVICE
120 VAC. 50/60 HZ.
15/20A. BY ELEC. CONTR.
— TO JUNCTION BOX. —



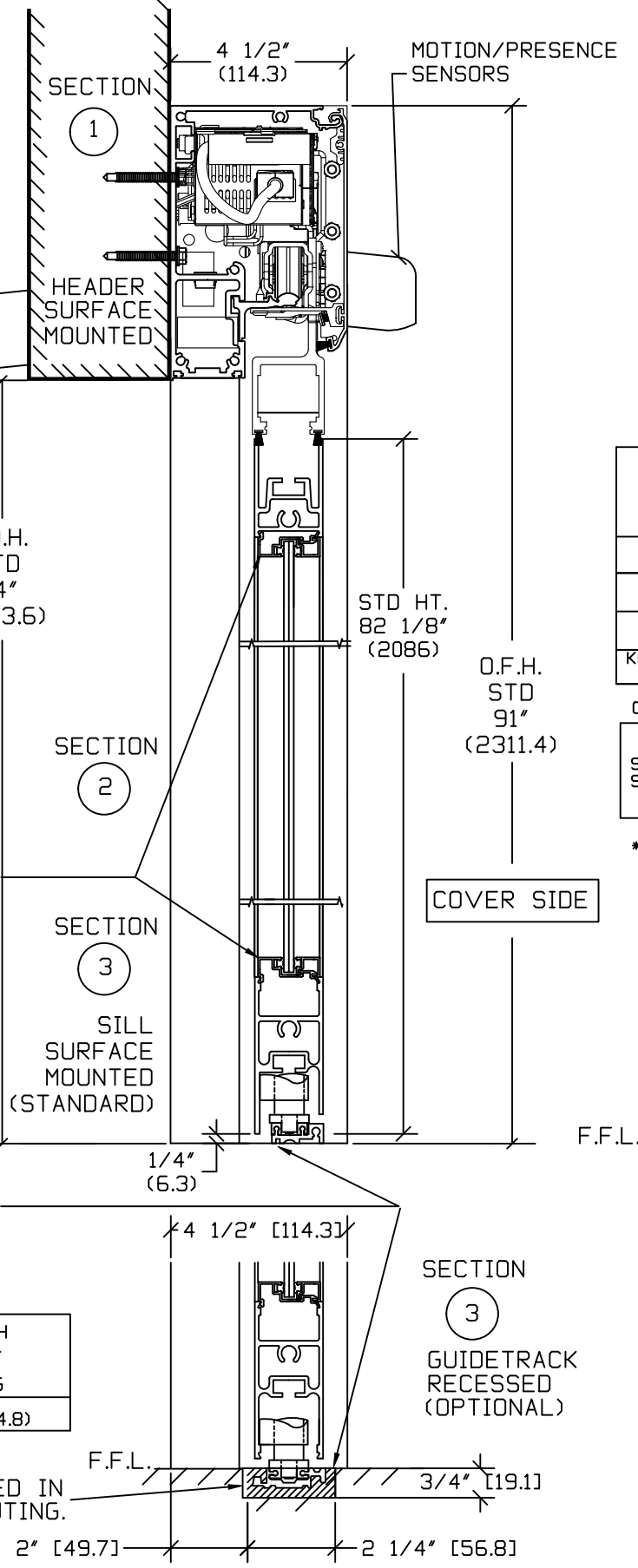
NON REMOVABLE
SECURITY TYPE
GLAZING BEAD
SYSTEM (TYP.)
1/4" STANDARD.

BREAKOUT SIDE

FINISHED FLOOR
MUST NOT BE
CONCAVE ACROSS
THE CLEAR DOOR OPENING
AND NOT OUT OF
LEVEL MORE THAN 1/4"

RECESS LENGTH FROM EDGE OF ROUGH OPENING
KEY C+4.125"(104.8)

TRACK LEVELED IN
1/4"(6.4) GROUTING.



NOTE: THE STANDARD PACKAGE CONSISTS OF:
THE AUTOMATIC OPERATOR & WEATHERSTRIP, FRAMES, DOORS WITH
VERTICAL WEATHERSTRIP, EMERGENCY BREAKAWAY
& 1-POINT LOCK. 5 OR 3 POSITION SWITCH (DIGITAL (3 OR 5) OR KEY
(5)), (OFF-EXIT ONLY-AUTO-REDUCED OPENING-HOLD OPEN OR OFF,
AUTO, HOLD OPEN), MOTION/PRESENCE SENSORS.
STANDARD FINISH: CLEAR- AA-M12C22A41, CLASS 1, .018 MM.
DARK BRONZE- AA-M12C22A44, CLASS 1, .018 MM
SPECIAL FINISHES ARE AVAILABLE.

THIS PACKAGE WILL ACCEPT UP TO 1" (25.4) INSULATED GLASS.

NOTE DRAWING IS DIMENSIONED IN BOTH ENGLISH AND METRIC
REF. AS FOLLOWS 1" (25.4) ALL METRIC SIZES ARE MILLIMETERS.

* FOR MAXIMUM CURRENT DRAW PER OPERATOR, SEE PRODUCT
SPECIFICATION, INSTALLATION INSTRUCTIONS, OR THE UL
LABEL ON THE EQUIPMENT.

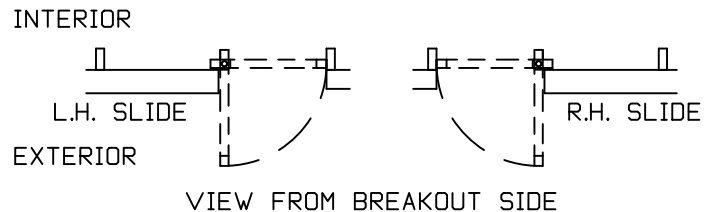
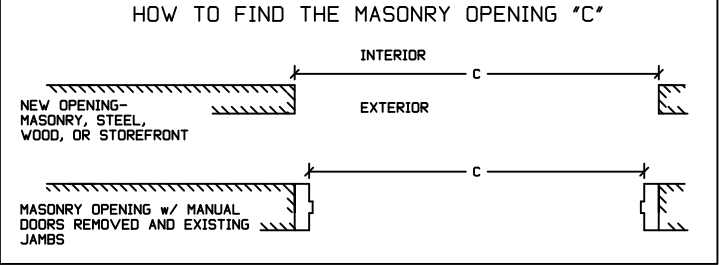
REFER TO RELEVANT (LOCAL, STATE, NATIONAL OR AHJ) BUILDING
CODE FOR MIN DOOR HEIGHT & MIN/MAX WIDTH ALLOWABLE
FOR EGRESS REQUIREMENT IN CONJUNCTION WITH TABLE BELOW.

MASONRY OPENING WIDTH C	ACTIVE LEAF WIDTH D	DOOR OPENING A	OVERALL FRAME HEIGHT	ROUGH OPENING HEIGHT	OVERALL FRAME WIDTH B
36" (914.4)	37 5/16" (947.7)	32 3/8" (822.3)	89 3/4" (2279.7)	84" (2134)	76 15/16" (1954.2)
42" (1066.8)	43 5/16" (1100.1)	38 3/8" (974.7)	89 3/4" (2279.7)	84" (2134)	88 15/16" (2259.0)
48" (1219.2)	49 5/16" (1252.5)	44 3/8" (1127.1)	89 3/4" (2279.7)	84" (2134)	100 15/16" (2563.8)
KEY	C+1 5/16" C+(33.3)"	C-3 5/8" C-(92.1)	ROH+7" ROH+(177.8)	OFH-7" OFH-(177.8)	2C+4 15/16" 2C+(125.4)"

OFW NOTE: CONSULT FACTORY FOR EXTENDED HEADERS.

STD. GLASS SIZE KEY*	WIDTH	C-5 5/16" C-(134.9)
	HEIGHT	OFH-15 7/8" OFH-(403.2)

* 1/4" GUTTER, NO MUTTINS BASED ON MASONRY OPENING



DWG NO. 1011272	DRN BY CLW	DATE 8/26/13	CHK BY SS	DATE 8/26/13	REV. 5.0	DATE 01/19/22