

**NOTE:** THE STANDARD PACKAGE CONSISTS OF:  
THE AUTOMATIC OPERATOR & WEATHERSTRIP, FRAMES, DOORS WITH  
VERTICAL WEATHERSTRIP, EMERGENCY BREAKAWAY  
& 1-POINT LOCK, OPTIONAL POSITION SWITCHES (DIGITAL (3 OR 5) OR  
KEY (5)), (OFF-EXIT ONLY-AUTO-REDUCED OPENING-HOLD OPEN OR OFF,  
AUTO, HOLD OPEN), MOTION/PRESENCE SENSORS.  
STANDARD FINISH: CLEAR- AA-M12C22A41, CLASS 1, .018 MM.  
DARK BRONZE- AA-M12C22A44, CLASS 1, .018 MM  
SPECIAL FINISHES ARE AVAILABLE.

THIS PACKAGE WILL ACCEPT UP TO 1" (25.4) INSULATED GLASS.

NOTE DRAWING IS DIMENSIONED IN BOTH ENGLISH AND METRIC  
REF. AS FOLLOWS 1" (25.4) ALL METRIC SIZES ARE MILLIMETERS.

\* FOR MAXIMUM CURRENT DRAW PER OPERATOR, SEE PRODUCT SPECIFICATION, INSTALLATION INSTRUCTIONS, OR THE UL LABEL ON THE EQUIPMENT.

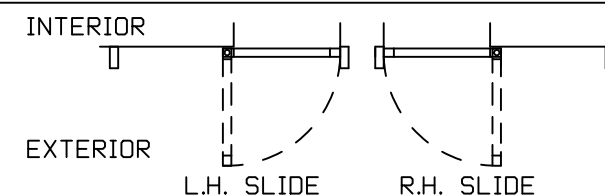
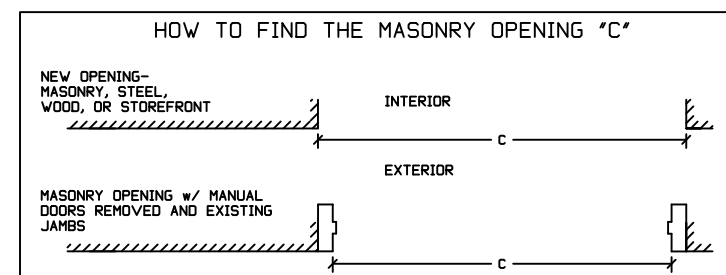
REFER TO RELEVANT (LOCAL, STATE, NATIONAL OR AHJ) BUILDING CODE FOR MIN DOOR HEIGHT & MIN/MAX WIDTH ALLOWABLE FOR EGRESS REQUIREMENT IN CONJUNCTION WITH TABLE BELOW.

MASONRY OPENING WIDTH C	ACTIVE LEAF WIDTH D	DOOR OPENING A	OVERALL FRAME HEIGHT	ROUGH OPENING HEIGHT	OVERALL FRAME WIDTH B
36" (914.4)	38 5/8" (981.1)	32 3/8" (822.3)	91" (2311.4)	84" (2134)	78 1/4" (1987.6)
42" (1066.8)	44 5/8" (1133.5)	38 3/8" (974.7)	91" (2311.4)	84" (2134)	90 1/4" (2292.4)
48" (1219.2)	50 5/8" (1285.9)	44 3/8" (1127.1)	91" (2311.4)	84" (2134)	102 1/4" (2597.2)
50 7/8" (1292.2)	53 1/2" (1358.9)	47 1/4" (1200.2)	91" (2311.4)	84" (2134)	108" (2743.2)
KEY	C+2 5/8" C+(66.7)"	C-3 5/8" C-(92.1)"	ROH+7" ROH+(177.8)"	OFH-7" OFH-(177.8)"	2C+6 1/4" 2C+(158.8)"

OFW NOTE: CONSULT FACTORY FOR EXTENDED HEADERS.

STD. GLASS SIZE KEY*	WIDTH	C-2 1/4" C-(57.2)
	HEIGHT	(OFH)-15 7/8" (OFH)-(403.2)

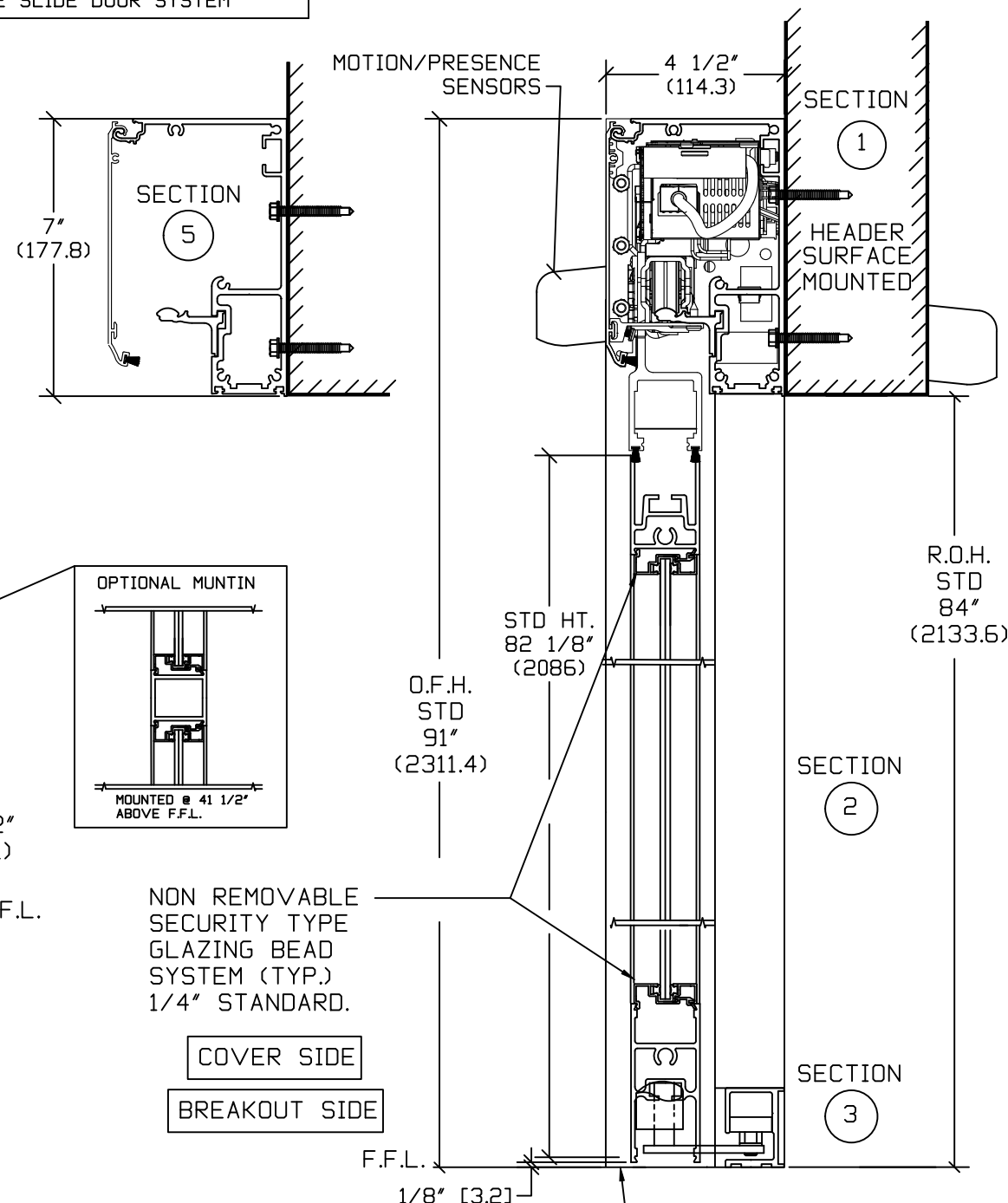
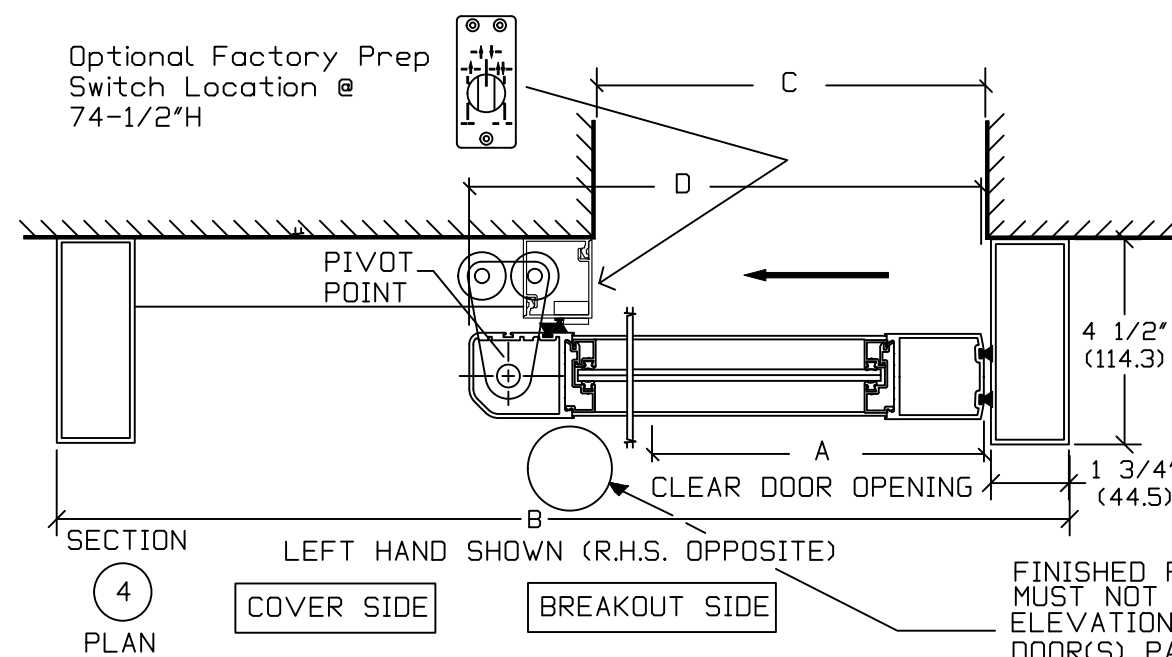
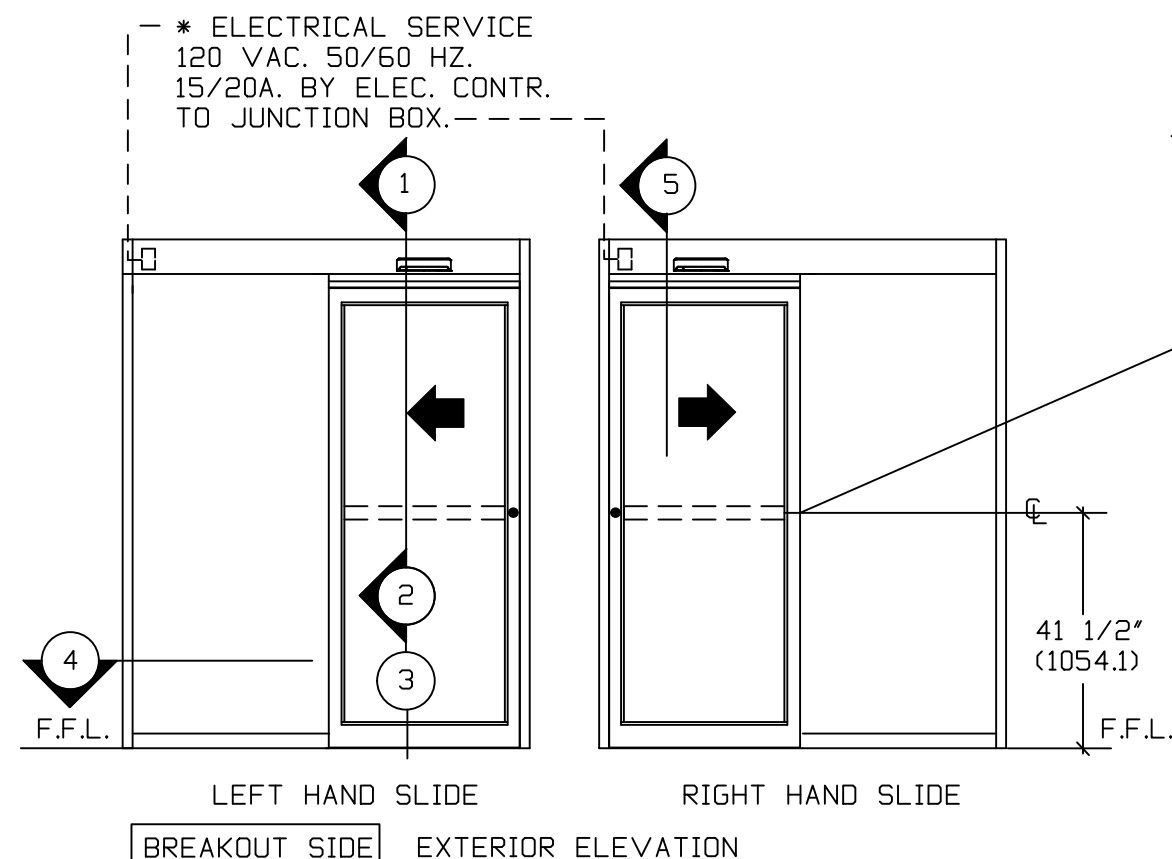
\* NARROW STILE RAILS w/ 1/4" GUTTER. NO MUTTINS BASED ON MASONRY OPENING



PLAN VIEW EMERGENCY BREAKAWAY

DWG NO. 1011270											
DRN BY	CLW	DATE	8/26/13	CHK BY	SS	DATE	8/26/13	REV.	4.0	DATE	01/19/22

# ASSA ABLOY



FINISHED FLOOR  
MUST NOT BE  
CONCAVE ACROSS  
THE CLEAR DOOR OPENING  
AND NOT OUT OF  
LEVEL MORE THAN  
1/4" (TYP.)

FINISHED FLOOR  
MUST NOT BE AN INCREASE IN  
ELEVATION THROUGH BREAKOUT  
DOOR(S) PATH