

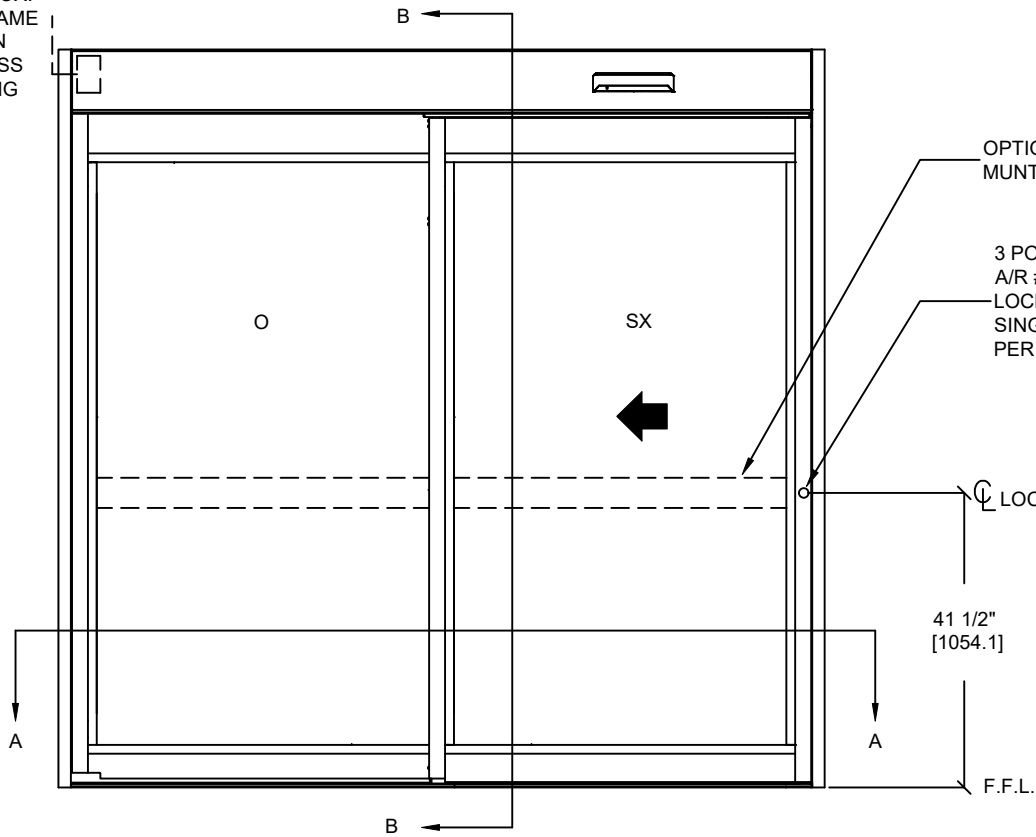
ASSA ABLOY

ASSA ABLOY ENTRANCE SYSTEMS  
1900 AIRPORT ROAD  
MONROE, NC 28110  
PHONE: 1-866-237-2687  
SPECDESK.NA.ENTRANCE@ASSAABLOY.COM

ASSA ABLOY SL500 Resilience R104

Overhead Concealed, Narrow Stile, Fixed Sidelite, Single Slide,  
Large & Small Missile Impact - Level D

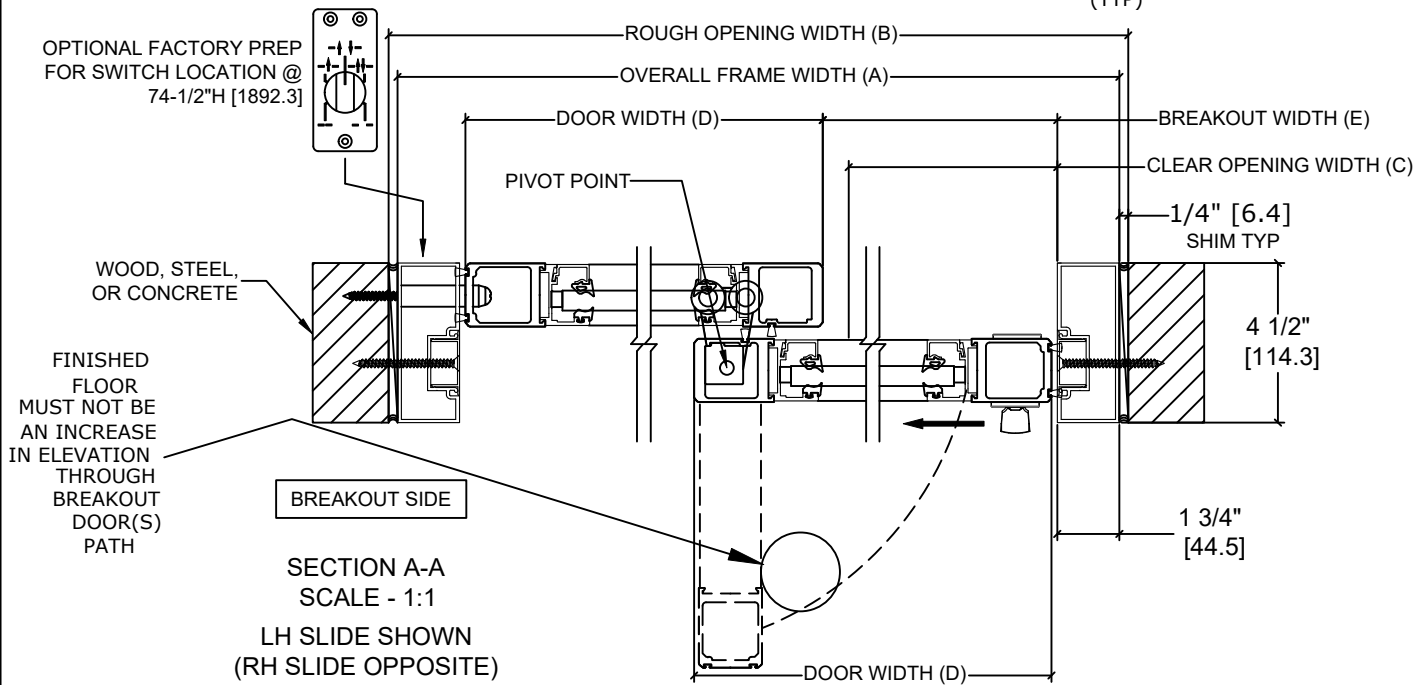
ELECTRICAL SUPPLY  
120 VAC. 50/60HZ. 15/20A.  
BY ELEC. CONTR. TO  
JUNCTION BOX.  
SUPPLY IN SAME  
LOCATION  
REGARDLESS  
OF HANDING



EXTERIOR ELEVATION

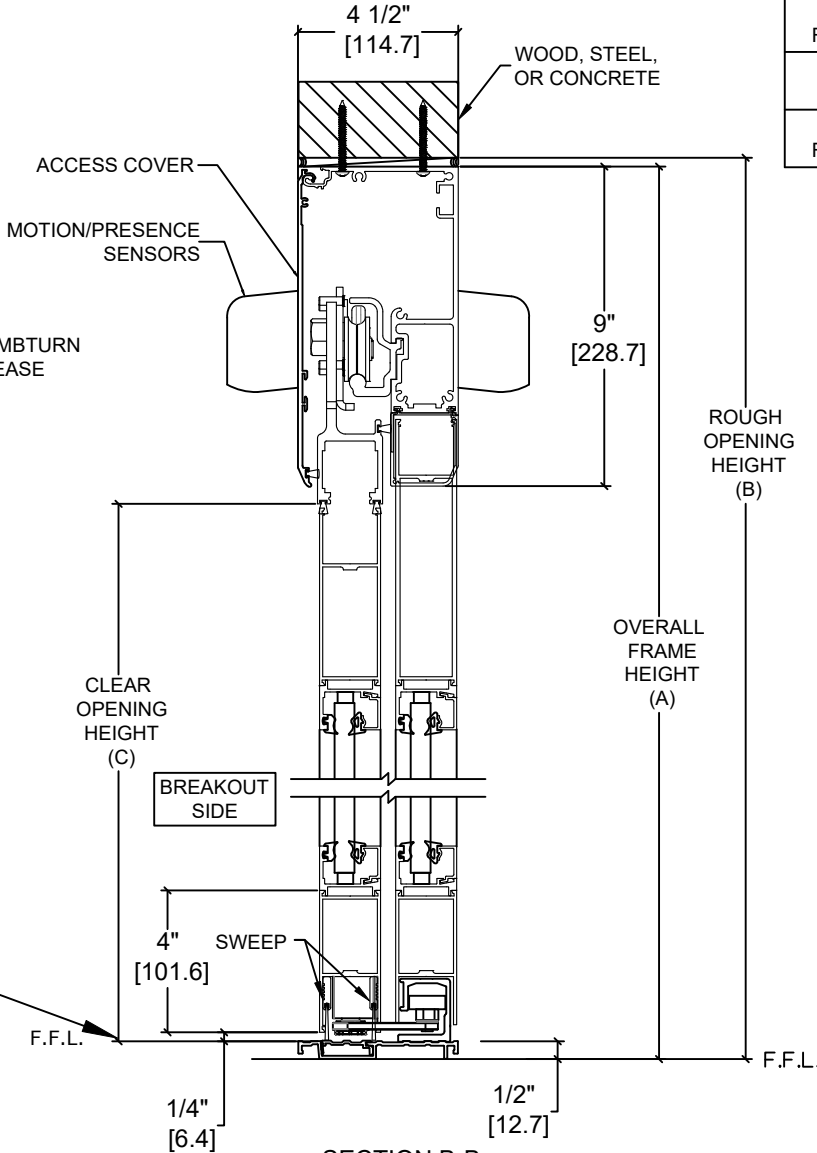
SCALE - 1:5  
LH SLIDE SHOWN  
(RH SLIDE OPPOSITE)

FINISHED FLOOR  
MUST NOT BE  
CONCAVE ACROSS  
THE CLEAR  
DOOR OPENING  
AND NOT OUT OF  
LEVEL MORE THAN 1/8"  
(TYP)



SECTION A-A  
SCALE - 1:1

LH SLIDE SHOWN  
(RH SLIDE OPPOSITE)



SECTION B-B  
SCALE - 1:1

MODEL NO.	OVERALL FRAME WIDTH (A)	ROUGH OPENING (B)	CLEAR OPENING (C)	DOOR WIDTH (D)	BREAKOUT WIDTH (E)
AT MAX WIDTH	108" [2743.2]	108 1/2" [2755.9]	46 1/8" [1171.6]	53 7/8" [1368.4]	50 1/2" [1285.9]
WIDTH FORMULA	B - 1/2" A + [12.7]	A + 1/2" A + [12.7]	A/2 - 7 7/8" A/2 - [198.8]	A/2 - 1/8" A/2 - [3.2]	A/2 - 3 1/2" A - [88.9]
AT MAX HEIGHT	104" [2641.6]	104 1/4" [2648.0]	94" [2387.6]		
HEIGHT FORMULA	B - 1/4" B - [6.35]	A + 1/4" A + [6.35]	A - 10" A - [254.0]		

GLASS FORMULA: OFW /2 - 5 5/8 [142.9] X OFH -20 1/2 [520.70]

NOTES:

STANDARD PACKAGE CONSISTS OF:

- STANDARD FINISH:
  - CLASS 1, .018MM, CLEAR- AA-M12C22A41
  - CLASS 1, .018MM, DARK BRONZE- AA-M12C22A44
- AUTOMATIC OPERATOR
- NARROW STILE RAILS
- THRESHOLD
- 3-POINT LOCK WITH LOCK INDICATOR
- 9/16" GLASS STOPS AND BLOCKS
- 1/4" HS - .090" DUPONT SENTRYGLAS PLUS® - 1/4" HS
- DRY GLAZED
- MOTION/PRESENCE SENSORS
- 5-POSITION KNOB SWITCH
- BALL CATCH
- DUAL CONCEALED SWEEPS IN SX PANEL

OPTIONS AVAILABLE:

- SPECIAL FINISHES
- 7" & 10" BOTTOM RAILS, SEE SHEET AA-44 FOR DETAILS
- THRESHOLD LEAD-UP, SEE SHEET AA-30 FOR DETAILS
- MUNTINS, SEE SHEET AA-44 FOR DETAILS
- SEE SHEET OS-10 FOR ALL OTHER OPTIONS

FOR MAXIMUM CURRENT DRAW, SEE PRODUCT SPECIFICATION,  
INSTALLATION INSTRUCTIONS, OR THE UL LABEL ON THE EQUIPMENT.

TEST PROTOCOLS: TAS 201, TAS 202 & TAS 203  
FLORIDA PRODUCT APPROVAL # 30356  
MIAMI-DADE NOA #21-0324.10

REFER TO RELEVANT [LOCAL, STATE, NATIONAL, OR AHJ]  
BUILDING CODE FOR MIN DOOR HEIGHT & MIN/MAX WIDTH  
ALLOWABLE FOR EGRESS REQUIREMENT IN CONJUNCTION  
WITH TABLE.

DIMENSIONS ARE IN INCHES [mm]

DESIGN PRESSURE RATING

WHERE WATER INFILTRATION REQUIREMENT IS NEEDED	WHERE WATER INFILTRATION REQUIREMENT IS NOT NEEDED
NOT APPROVED	+/- 80 PSF

DWG NO. 1019917	DRN BY CAP	DATE 03/02/20	CHK BY SJF	DATE 4/29/20	REV. 6.0	DATE 1/20/22
-----------------	------------	---------------	------------	--------------	----------	--------------

ASSA ABLOY