

Overhead Concealed, Medium Stile, Fixed Sidelite, Single Slide  
Large & Small Missile Impact - Level D

REGARDLESS OF HANDING

B

0

SX

OPT. MUM

3 PO  
A/R #  
LOCK  
SING  
PER

LOCK

41 1/2"  
[1054.1]

A

A

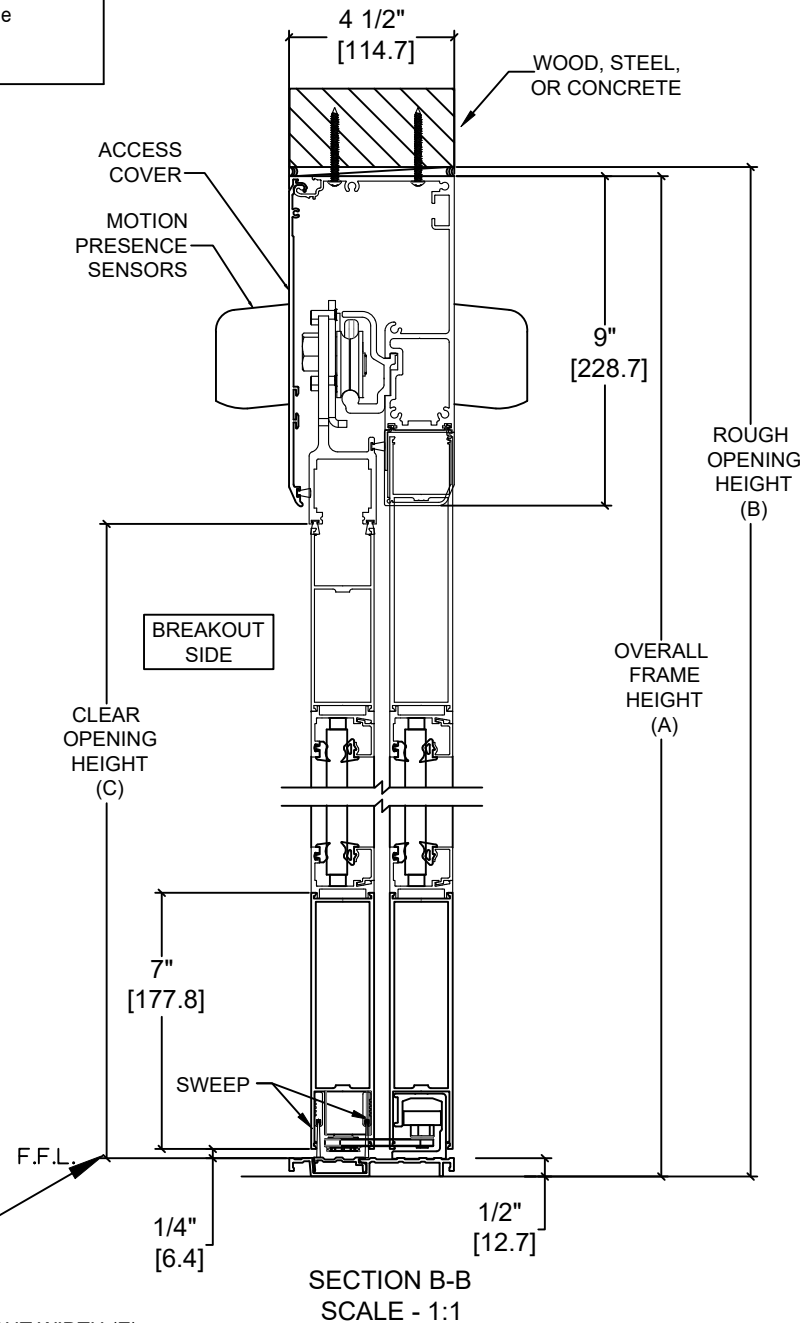
F.F.L.

B

EXTERIOR ELEVATION

FINISH  
MUST

FINISHED FLOOR  
MUST NOT BE  
CONCAVE ACROSS  
THE CLEAR  
DOOR OPENING  
AND NOT OUT OF  
LEVEL MORE THAN 1/8"  
(TYP)



MODEL NO.	OVERALL FRAME WIDTH (A)	ROUGH OPENING (B)	CLEAR OPENING (C)	DOOR WIDTH (D)	BREAKOUT WIDTH (E)
AT MAX WIDTH	108" [2743.2]	108 1/2" [2755.9]	43 3/8" [1101.3]	54 3/4" [1390.7]	49 5/8" [1260.5]
WIDTH FORMULA	B - 1/2" B - [12.7]	A + 1/2" A + [12.7]	A/2 - 10 5/8" A/2 - [270.3]	A/2 + 3/4" A/2 - [19.1]	A/2 - 4 3/8" A - [111.1]
AT MAX HEIGHT	104" [2641.6]	104 1/4" [2648.0]	94" [2387.6]		
HEIGHT FORMULA	B - 1/4" B - [6.35]	A + 1/4" A + [6.35]	A - 10" A - [254.0]		

NOTES:

- STANDARD FINISH:
  - CLASS 1, .018MM, CLEAR- AA-M12C22A41
  - CLASS 1, .018MM, DARK BRONZE- AA-M12C22A44
- AUTOMATIC OPERATOR
- MEDIUM STILE RAILS
- THRESHOLD
- 3-POINT LOCK WITH LOCK INDICATOR
- 9/16" GLASS STOPS AND BLOCKS
  - 1/4" HS - .090" DUPONT SENTRYGLAS PLUS® - 1/4" HS
- DRY GLAZED
- MOTION/PRESENCE SENSORS
- 5-POSITION KNOB SWITCH
- BALL CATCH
- DUAL CONCEALED SWEEPS IN SX PANELS

- SPECIAL FINISHES
- 10" BOTTOM RAILS, SEE SHEET AA-44 FOR DETAILS
- THRESHOLD LEAD-UP, SEE SHEET AA-30 FOR DETAILS
- MUNTINS, SEE SHEET AA-44 FOR DETAILS
- SEE SHEET OS-10 FOR ALL OTHER OPTIONS

TEST PROTOCOLS: TAS 201, TAS 202 & TAS 203  
FLORIDA PRODUCT APPROVAL #30356  
MIAMI-DADE NOA #21-0324.10

DIMENSIONS ARE IN INCHES [mm]

DESIGN PRESSURE RATING	
WHERE WATER INFILTRATION REQUIREMENT IS NEEDED	WHERE WATER INFILTRATION REQUIREMENT IS NOT NEEDED
NOT APPROVED	+/- 80 PSF

DWG NO.		1019918			
DRN BY	CAP	DATE	03/02/20	CHK BY	SJF
		DATE	4/29/20	REV.	6.0
		DATE	1/20/22		
<div style="border: 1px solid black; height: 100px; width: 100%;"></div>					
<div style="border: 1px solid black; height: 100px; width: 100%;"></div>			<div style="border: 1px solid black; height: 30px; width: 100%;"></div>		
			<div style="border: 1px solid black; height: 30px; width: 100%;"></div>		
			<div style="border: 1px solid black; height: 30px; width: 100%;"></div>		
			<div style="border: 1px solid black; height: 30px; width: 100%;"></div>		