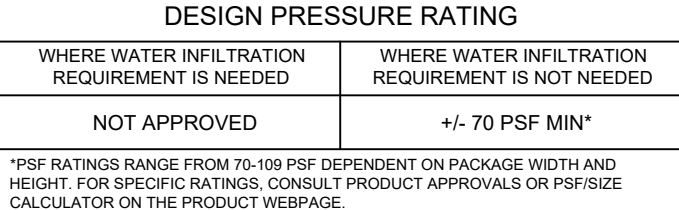
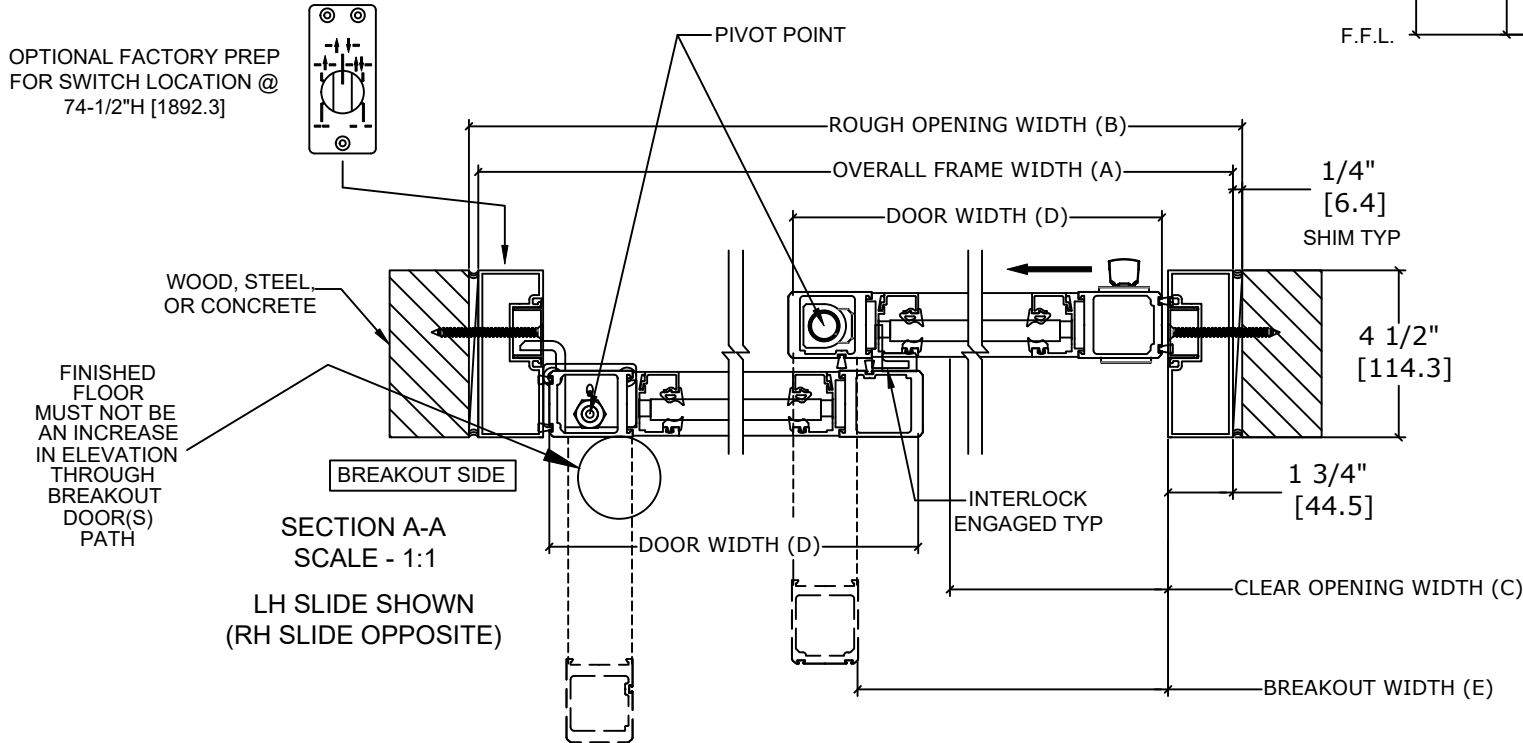


Overhead Concealed, Narrow Stile, Full Breakout, Single Slide,  
Non-Impact



MODEL NO.	OVERALL FRAME WIDTH (A)	ROUGH OPENING (B)	CLEAR OPENING (C)	DOOR WIDTH (D)	BREAKOUT WIDTH (E)
AT MAX WIDTH	108" [2743.2]	108 1/2" [2755.9]	46 1/8" [1171.6]	53 3/4" [1365.3]	98.00" [2490.0]
WIDTH FORMULA	B - 1/2" B - [12.7]	A + 1/2" A + [12.7]	A/2 - 7 7/8" A/2 - [22.2]	A/2 - 1/4" A/2 - [6.35]	A - 10" A - [254.0]
AT MAX HEIGHT	104" [2641.6]	104 1/4" [2648.0]	94" [2387.6]		
HEIGHT FORMULA	B - 1/4" B - [6.35]	A + 1/4" A + [6.35]	A - 10" A - [254.0]		

GLASS FORMULA: OFW /2 - 5 5/8[142.9] X OFH -20 1/2 [520.70]

### STANDARD PACKAGE CONSISTS OF:

- STANDARD FINISH:  
CLASS 1, .018MM, CLEAR- AA-M12C22A41  
CLASS 1, .018MM, DARK BRONZE- AA-M12C22A44  
AUTOMATIC OPERATOR  
NARROW STILE RAILS  
THRESHOLD  
3-POINT LOCK WITH LOCK INDICATOR  
1/4" [6mm] TEMPERED GLASS  
DRY GLAZED  
MOTION/PRESENCE SENSORS  
5-POSITION KNOB SWITCH  
BALL CATCH  
DUAL CONCEALED SWEEPS IN SX & SO PANELS  
4" BOTTOM RAILS

OPTIONS AVAILABLE:

- SPECIAL FINISHES
- PANIC EXIT DEVICE
- THRESHOLD LEAD-UP
- TRUE DIVIDED MUNTINS
- 7"/10" BOTTOM RAILS
- SEE SHEET OS-10 FOR ALL OTHER OPTIONS AND  
OPTION DETAILS

FOR MAXIMUM CURRENT DRAW, SEE PRODUCT SPECIFICATION,  
INSTALLATION INSTRUCTIONS, OR THE UL LABEL ON THE EQUIPMENT.

TEST PROTOCOLS: TAS 201, TAS 202 & TAS 203  
FLORIDA PRODUCT APPROVAL # FL30356  
MIAMI-DADE NOA #21-0324.09

REFER TO RELEVANT [LOCAL, STATE, NATIONAL, OR AHJ]  
BUILDING CODE FOR MIN DOOR HEIGHT & MIN/MAX WIDTH  
ALLOWABLE FOR EGRESS REQUIREMENT IN CONJUNCTION  
WITH TABLE.

NOTE: PATENT PENDING

DWG NO. 1019905					
DRN BY	SJF	DATE	9/18/19	CHK BY	DATE
				REV. 8.0	DATE 1/20/22



\*PSF RATINGS RANGE FROM 70-109 PSF DEPENDENT ON PACKAGE WIDTH AND HEIGHT. FOR SPECIFIC RATINGS, CONSULT PRODUCT APPROVALS OR PSF/SIZE CALCULATOR ON THE PRODUCT WEBPAGE.