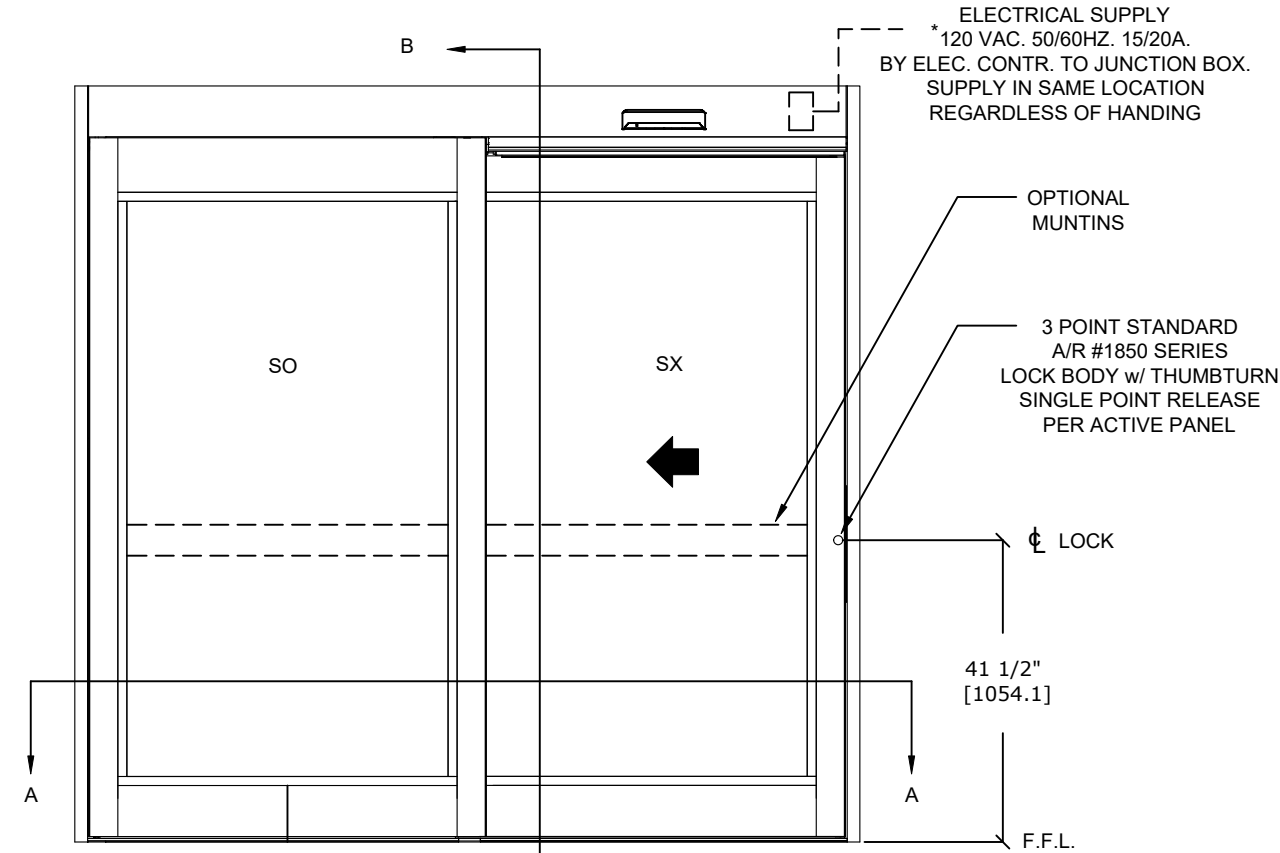


ASSA ABLOY

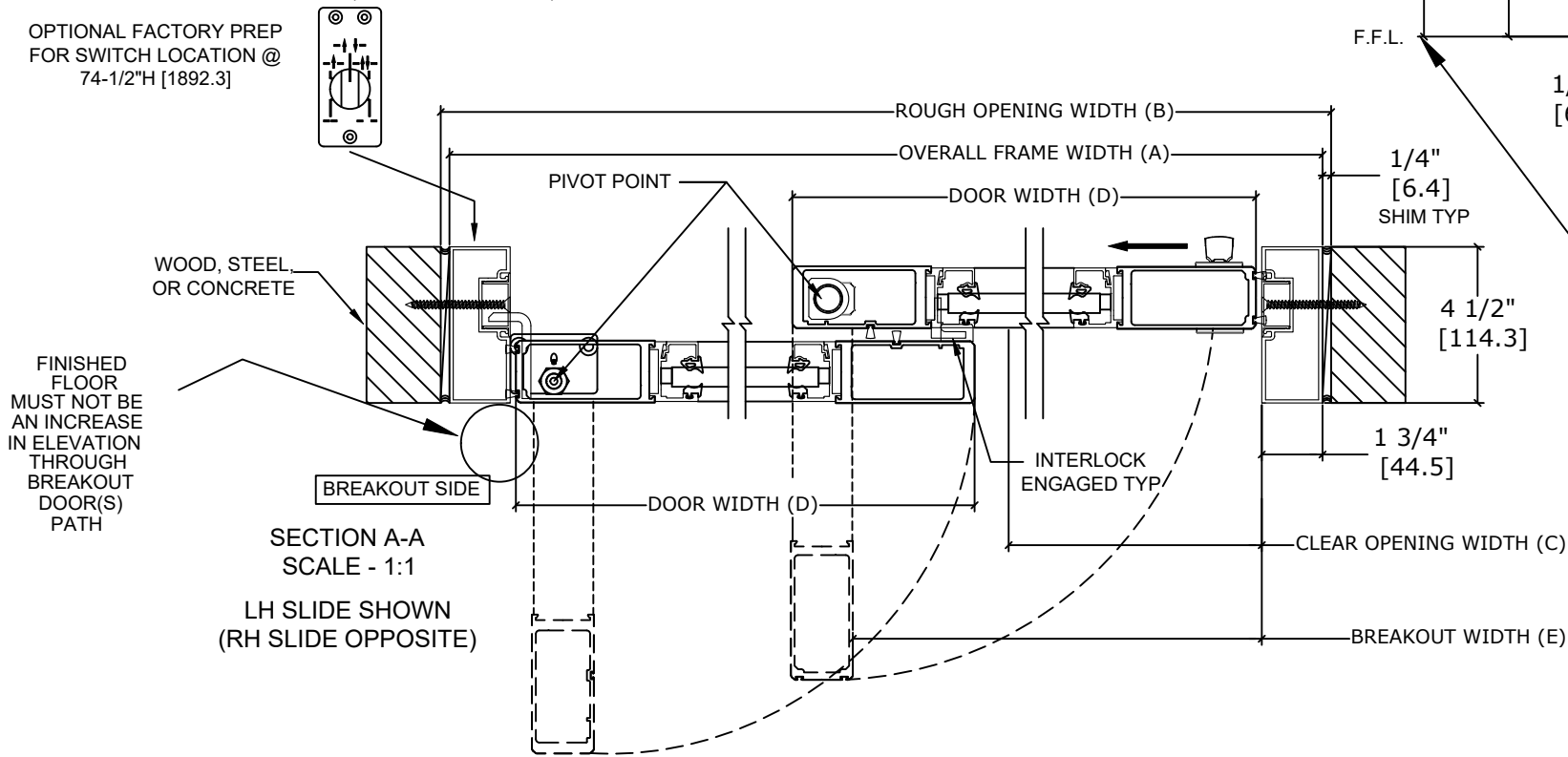
ASSA ABLOY ENTRANCE SYSTEMS
1900 AIRPORT ROAD
MONROE, NC 28110
PHONE: 1-866-237-2687
SPECDESK.NA.ENTRANCE@ASSAABLOY.COM

ASSA ABLOY SL500 Resilience R104

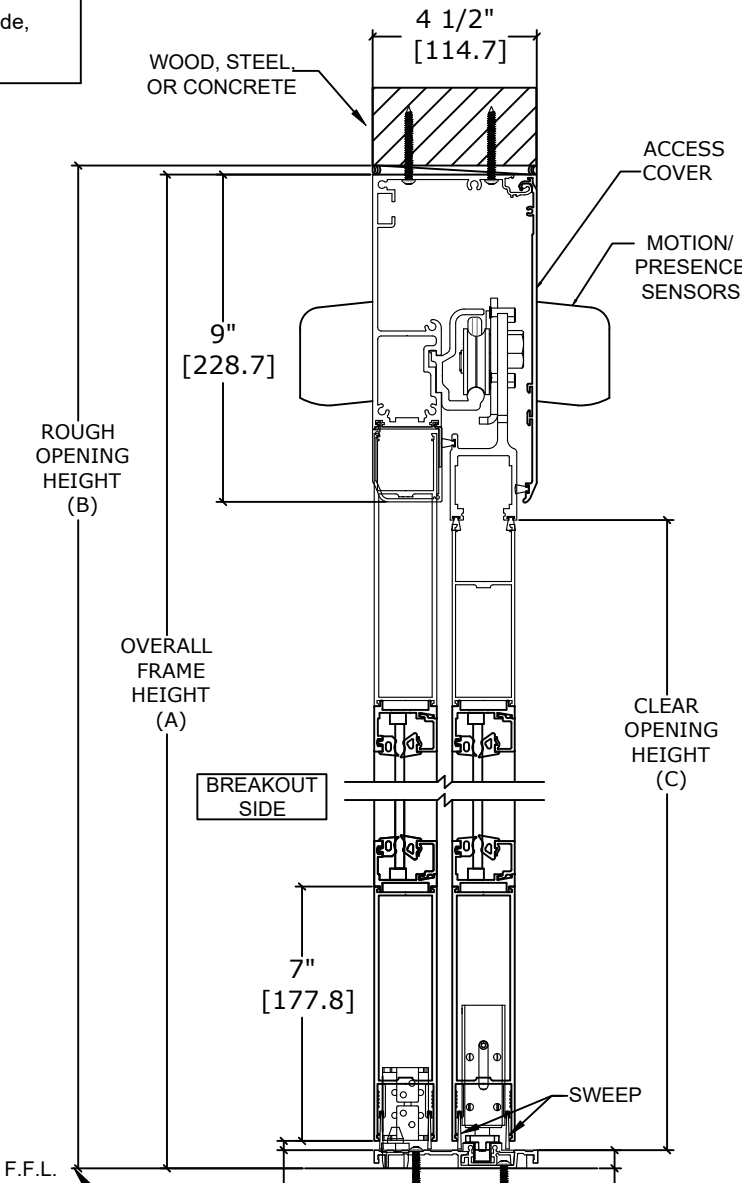
Overhead Concealed, Medium Stile, Full Breakout, Single Slide,
Non-Impact



EXTERIOR ELEVATION
SCALE - 1:5
LH SLIDE SHOWN
(RH SLIDE OPPOSITE)



FINISHED FLOOR
MUST NOT BE
AN INCREASE
IN ELEVATION
THROUGH
BREAKOUT
DOOR(S)
PATH



SECTION B-B
SCALE - 1:1

FINISHED FLOOR
MUST NOT BE
CONCAVE ACROSS
THE CLEAR
DOOR OPENING
AND NOT OUT OF
LEVEL MORE THAN 1/8"
(TYP)

| DESIGN PRESSURE RATING | |
|---|---|
| WHERE WATER INFILTRATION REQUIREMENT IS NEEDED | WHERE WATER INFILTRATION REQUIREMENT IS NOT NEEDED |
| NOT APPROVED | +/- 70 PSF* |

*PSF RATINGS RANGE FROM 70-109 PSF DEPENDENT ON PACKAGE WIDTH AND
HEIGHT. FOR SPECIFIC RATINGS, CONSULT PRODUCT APPROVALS OR PSF/SIZE
CALCULATOR ON THE PRODUCT WEBPAGE.

| MODEL NO. | OVERALL FRAME WIDTH (A) | ROUGH OPENING (B) | CLEAR OPENING (C) | DOOR WIDTH (D) | BREAKOUT WIDTH (E) |
|-------------------|-------------------------------|-------------------------|----------------------------|----------------------------|--------------------------|
| AT MAX WIDTH | 108" [2743.2] | 108 1/2" [2755.9] | 43 3/8" [1101.3] | 54 3/4" [1390.7] | 98.00" [2490.0] |
| WIDTH FORMULA | B - 1/2" B - [12.7] | A + 1/2" A + [12.7] | A/2-10 5/8" A/2-[270.3] | A/2 + 3/4" A/2 - [19.1] | A - 10" A - [254.0] |
| AT MAX HEIGHT | 104" [2641.6] | 104 1/4" [2648.0] | 94" [2387.6] | | |
| HEIGHT FORMULA | B - 1/4" B - [6.35] | A + 1/4" A + [6.35] | A - 10" A - [254.0] | | |

GLASS FORMULA: OFW /2 - 8 3/8 [212.7] X OFH -23 1/2 [596.9]

- NOTES:**
- STANDARD PACKAGE CONSISTS OF:
 - STANDARD FINISH:
 - CLASS 1, .018MM, CLEAR- AA-M12C22A41
 - CLASS 1, .018MM, DARK BRONZE- AA-M12C22A44
 - AUTOMATIC OPERATOR
 - MEDIUM STILE RAILS
 - THRESHOLD
 - 3-POINT LOCK WITH LOCK INDICATOR
 - 1/4" [6mm] TEMPERED GLASS
 - DRY GLAZED
 - MOTION/PRESENCE SENSORS
 - 5-POSITION KNOB SWITCH
 - BALL CATCH
 - DUAL CONCEALED SWEEPS IN SX & SO PANELS
 - 7" BOTTOM RAILS

- OPTIONS AVAILABLE:**
- SPECIAL FINISHES
 - PANIC EXIT DEVICE
 - THRESHOLD LEAD-UP
 - TRUE DIVIDED MUNTINS
 - 10" BOTTOM RAILS
 - SEE SHEET OS-10 FOR ALL OTHER OPTIONS AND
OPTION DETAILS

FOR MAXIMUM CURRENT DRAW, SEE PRODUCT SPECIFICATION,
INSTALLATION INSTRUCTIONS, OR THE UL LABEL ON THE EQUIPMENT.

TEST PROTOCOLS: TAS 201, TAS 202 & TAS 203
FLORIDA PRODUCT APPROVAL # FL30356
MIAMI-DADE NOA #21-0324.09

REFER TO RELEVANT [LOCAL, STATE, NATIONAL, OR AHJ]
BUILDING CODE FOR MIN DOOR HEIGHT & MIN/MAX WIDTH
ALLOWABLE FOR EGRESS REQUIREMENT IN CONJUNCTION
WITH TABLE.

NOTE: PATENT PENDING

| | |
|---------|----------|
| DWG NO. | 1019906 |
| DRN BY | SJF |
| DATE | 9/18/19 |
| CHK BY | |
| DATE | |
| REV. | 7.0 |
| DATE | 01/20/22 |

ASSA ABLOY