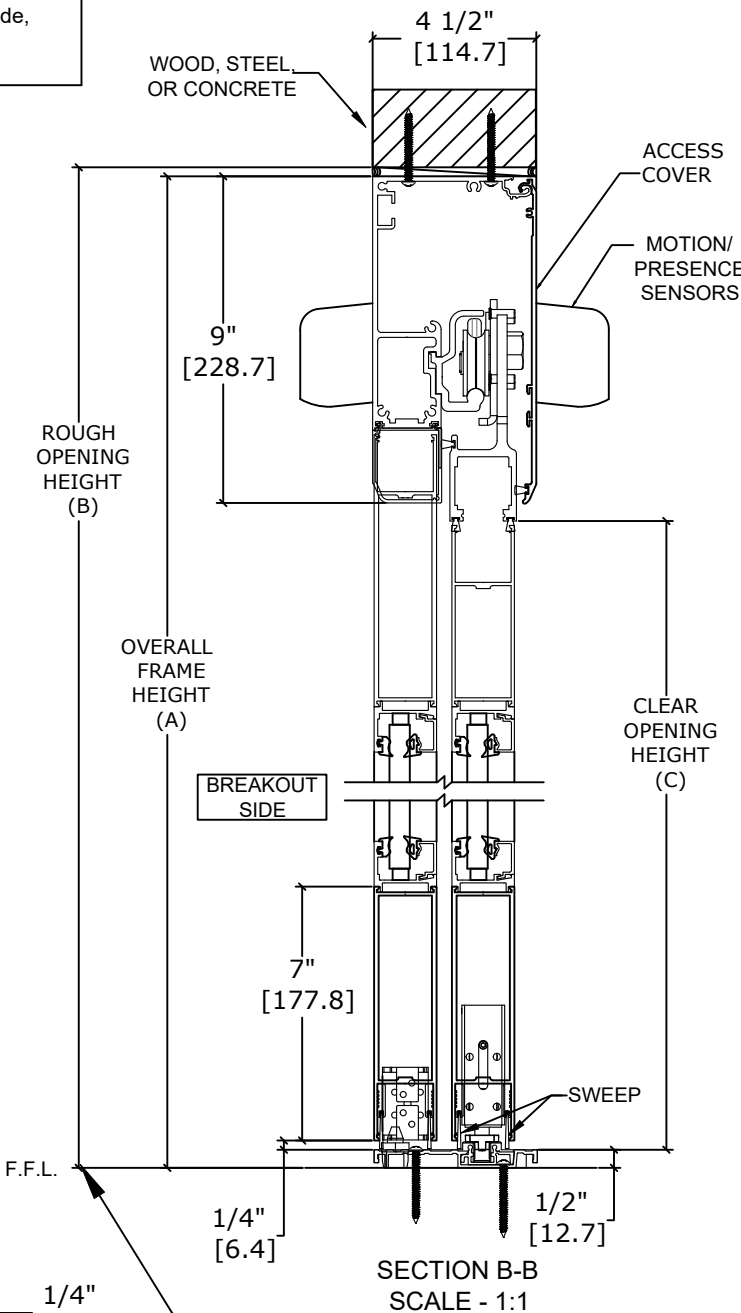
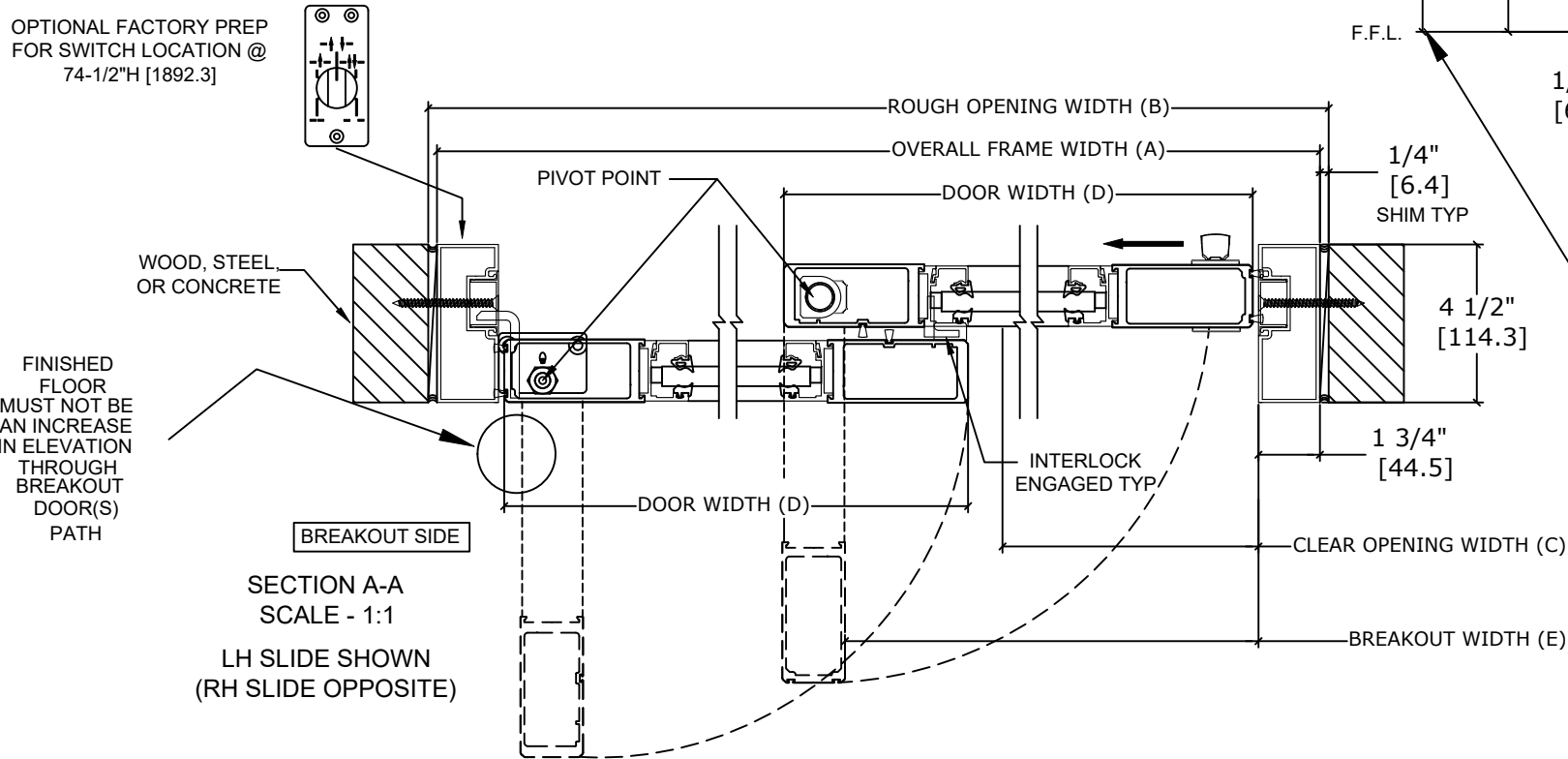
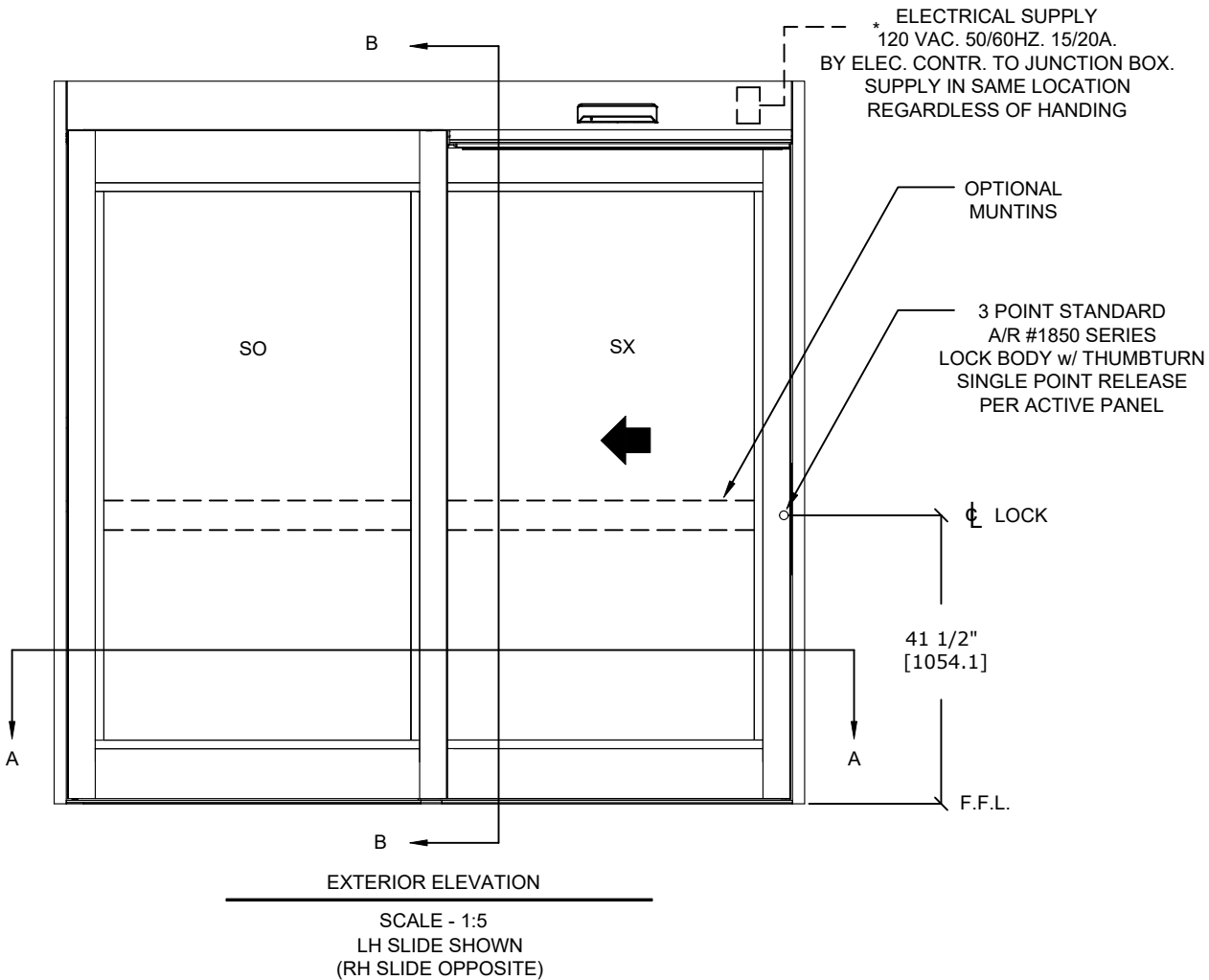


ASSA ABLOY SL500 Resilience R104

Overhead Concealed, Medium Stile, Full Breakout, Single Slide,  
Large & Small Missile Impact - Level D



MODEL NO.	OVERALL FRAME WIDTH (A)	ROUGH OPENING (B)	CLEAR OPENING (C)	DOOR WIDTH (D)	BREAKOUT WIDTH (E)
AT MAX WIDTH	108" [2743.2]	108 1/2" [2755.9]	43 3/8" [1101.3]	54 3/4" [1390.7]	98.00" [2490.0]
WIDTH FORMULA	B - 1/2" B - [12.7]	A + 1/2" A + [12.7]	A/2-10 5/8" A/2-[270.3]	A/2 + 3/4" A/2 - [19.1]	A - 10" A - [254.0]
AT MAX HEIGHT	104" [2641.6]	104 1/4" [2648.0]	94" [2387.6]		
HEIGHT FORMULA	B - 1/4" B - [6.35]	A + 1/4" A + [6.35]	A - 10" A - [254.0]		

GLASS FORMULA: OFW /2 - 8 3/8 [212.7] X OFH -23 1/2 [596.9]

- NOTES:**
- STANDARD PACKAGE CONSISTS OF:
- STANDARD FINISH:
    - CLASS 1, .018MM, CLEAR- AA-M12C22A41
    - CLASS 1, .018MM, DARK BRONZE- AA-M12C22A44
  - AUTOMATIC OPERATOR
  - MEDIUM STILE RAILS
  - THRESHOLD
  - 3-POINT LOCK WITH LOCK INDICATOR
  - 9/16" GLASS STOPS AND BLOCKS
  - 1/4" HS - .090" DUPONT SENTRYGLAS PLUS® - 1/4" HS
  - DRY GLAZED
  - MOTION/PRESENCE SENSORS
  - 5-POSITION KNOB SWITCH
  - BALL CATCH
  - DUAL CONCEALED SWEEPS IN SX & SO PANELS
  - 7" BOTTOM RAILS
- OPTIONS AVAILABLE:
- SPECIAL FINISHES
  - PANIC EXIT DEVICE
  - 1" IG O.A. LAMINATED GLASS
  - 3/16" HS - .090" DUPONT SENTRYGLAS PLUS® - 3/16" HS - 3/8" AIR GAP - 3/16" FT
  - 10" BOTTOM RAILS
  - THRESHOLD LEAD-UP
  - TRUE DIVIDED MUNTINS
  - FALSE MUNTINS
  - SEE SHEET OS-10 FOR ALL OTHER OPTIONS AND OPTION DETAILS

FOR MAXIMUM CURRENT DRAW, SEE PRODUCT SPECIFICATION, INSTALLATION INSTRUCTIONS, OR THE UL LABEL ON THE EQUIPMENT.

TEST PROTOCOLS: TAS 201, TAS 202 & TAS 203  
FLORIDA PRODUCT APPROVAL # FL30356  
MIAMI-DADE NOA #20-0324.07

REFER TO RELEVANT [LOCAL, STATE, NATIONAL, OR AHJ]  
BUILDING CODE FOR MIN DOOR HEIGHT & MIN/MAX WIDTH  
ALLOWABLE FOR EGRESS REQUIREMENT IN CONJUNCTION  
WITH TABLE.

NOTE: PATENT PENDING

DWG NO.	1019908
DRN BY	SJF
DATE	9/18/19
CHK BY	
DATE	
REV.	7.0
DATE	1/20/22

ASSA ABLOY

DESIGN PRESSURE RATING	
WHERE WATER INFILTRATION REQUIREMENT IS NEEDED	WHERE WATER INFILTRATION REQUIREMENT IS NOT NEEDED
NOT APPROVED	+/- 85 PSF*

\*PSF RATINGS RANGE FROM 85-125 PSF DEPENDENT ON PACKAGE WIDTH AND HEIGHT. FOR SPECIFIC RATINGS, CONSULT PRODUCT APPROVALS OR PSF/SIZE CALCULATOR ON THE PRODUCT WEBPAGE.