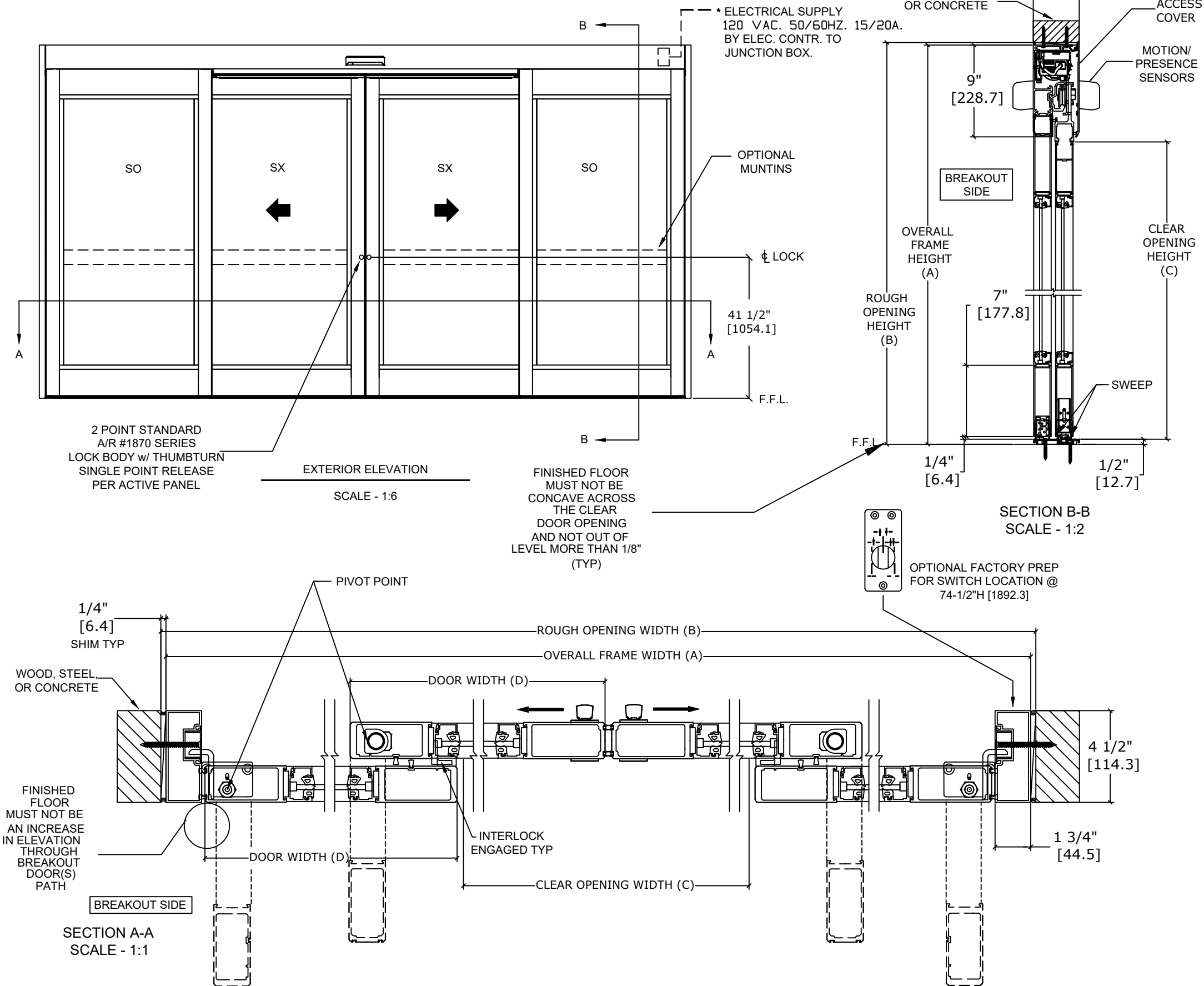


Overhead Concealed, Medium Stile, Full Breakout, Bi-Part,  
Non-Impact



	OVERALL FRAME WIDTH (A)	ROUGH OPENING (B)	CLEAR OPENING (C)	DOOR WIDTH (D)	BREAKOUT WIDTH (E)
AT MAX WIDTH	192" [4876.8]	192 1/2" [4889.5]	76 1/2" [1943.1]	49 5/8" [1260.5]	175 9/16" [4459.3]
WIDTH FORMULA	B - 1/2" B - [12.7]	A + 1/2" A + [12.7]	A/2-19 1/2" A/2-[495.3]	A/4 + 1 5/8" A/4 + [41.3]	A - 16 7/16" A - [417.5]
AT MAX HEIGHT	104" [2641.6]	104 1/4" [2648.0]	94" [2387.6]		
HEIGHT FORMULA	B - 1/4" B - [6.35]	A + 1/4" A + [6.35]	A - 10" A - [254.0]		

GLASS FORMULA: OFW /4 - 7 1/2 [190.5] X OFH -23 1/2 [596.9]

NOTES:

STANDARD PACKAGE CONSISTS OF:

- STANDARD FINISH:  
CLASS 1, .018MM, CLEAR- AA-M12C22A41  
CLASS 1, .018MM, DARK BRONZE- AA-M12C22A44  
AUTOMATIC OPERATOR  
MEDIUM STILE RAILS  
THRESHOLD  
2-POINT LOCK WITH LOCK INDICATOR  
1/4" [6mm] TEMPERED GLASS  
DRY GLAZED  
MOTION/PRESENCE SENSORS  
5-POSITION KNOB SWITCH  
BALL CATCH  
DUAL CONCEALED SWEEPS IN SX & SO PANELS  
7" BOTTOM RAILS

OPTIONS AVAILABLE:

- SPECIAL FINISHES
- PANIC EXIT DEVICE
- THRESHOLD LEAD-UP
- TRUE DIVIDED MUNTINS
- 10" BOTTOM RAILS
- SEE SHEET OS-10 FOR ALL OTHER OPTIONS AND  
OPTION DETAILS

FOR MAXIMUM CURRENT DRAW, SEE PRODUCT SPECIFICATION,  
INSTALLATION INSTRUCTIONS, OR THE UL LABEL ON THE EQUIPMENT.

TEST PROTOCOLS: TAS 201, TAS 202 & TAS 203  
FLORIDA PRODUCT APPROVAL # FL30356  
MIAMI-DADE NOA #21-0324.09

REFER TO RELEVANT [LOCAL, STATE, NATIONAL, OR AHJ]  
BUILDING CODE FOR MIN DOOR HEIGHT & MIN/MAX WIDTH  
ALLOWABLE FOR EGRESS REQUIREMENT IN CONJUNCTION  
WITH TABLE.

DESIGN PRESSURE RATING	
WHERE WATER INFILTRATION REQUIREMENT IS NEEDED	WHERE WATER INFILTRATION REQUIREMENT IS NOT NEEDED
NOT APPROVED	+/- 70 PSF*

PSF RATINGS RANGE FROM 70-115 PSF DEPENDENT ON PACKAGE WIDTH AND HEIGHT. FOR SPECIFIC RATINGS, CONSULT PRODUCT APPROVALS OR PSF/SIZE CALCULATOR ON THE PRODUCT WEBPAGE.

NOTE: PATENT PENDING

DWG NO. 1019912					
DRN BY SJF	DATE 9/18/19	CHK BY	DATE	REV. 5.0	DATE 1/21/22

