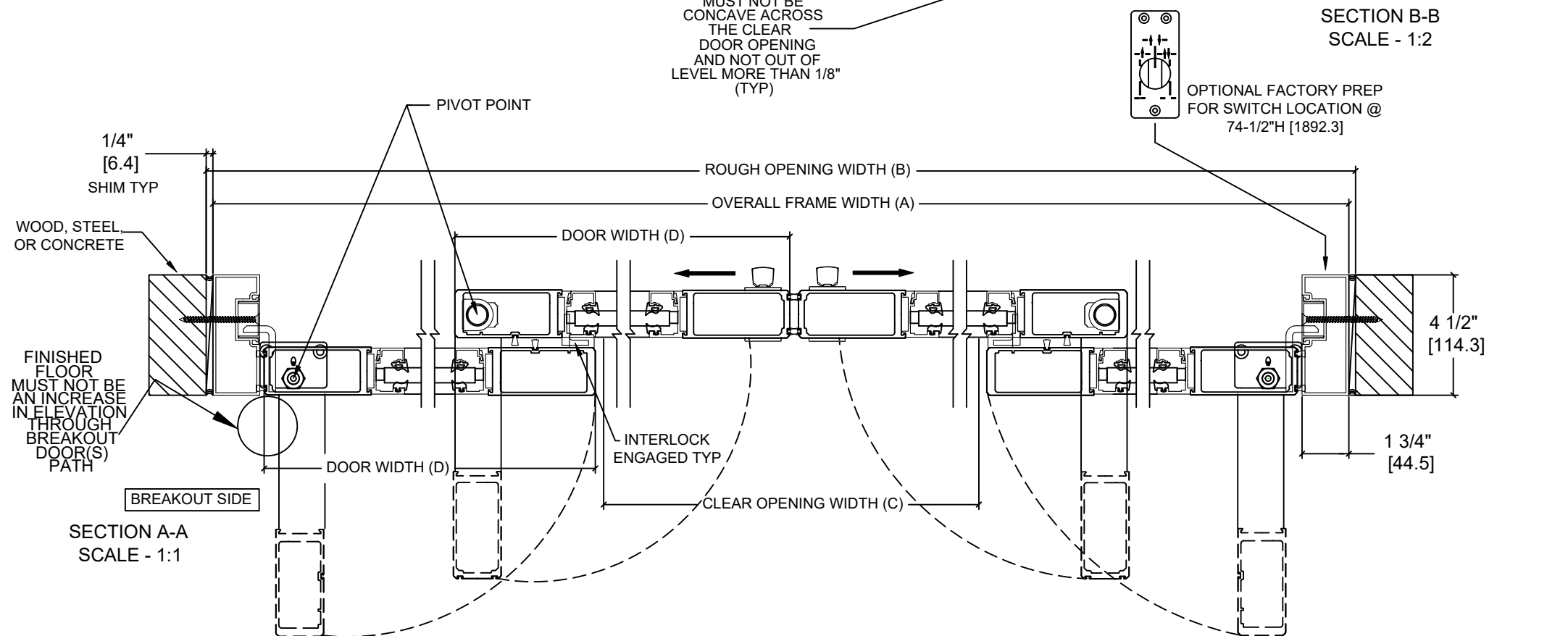
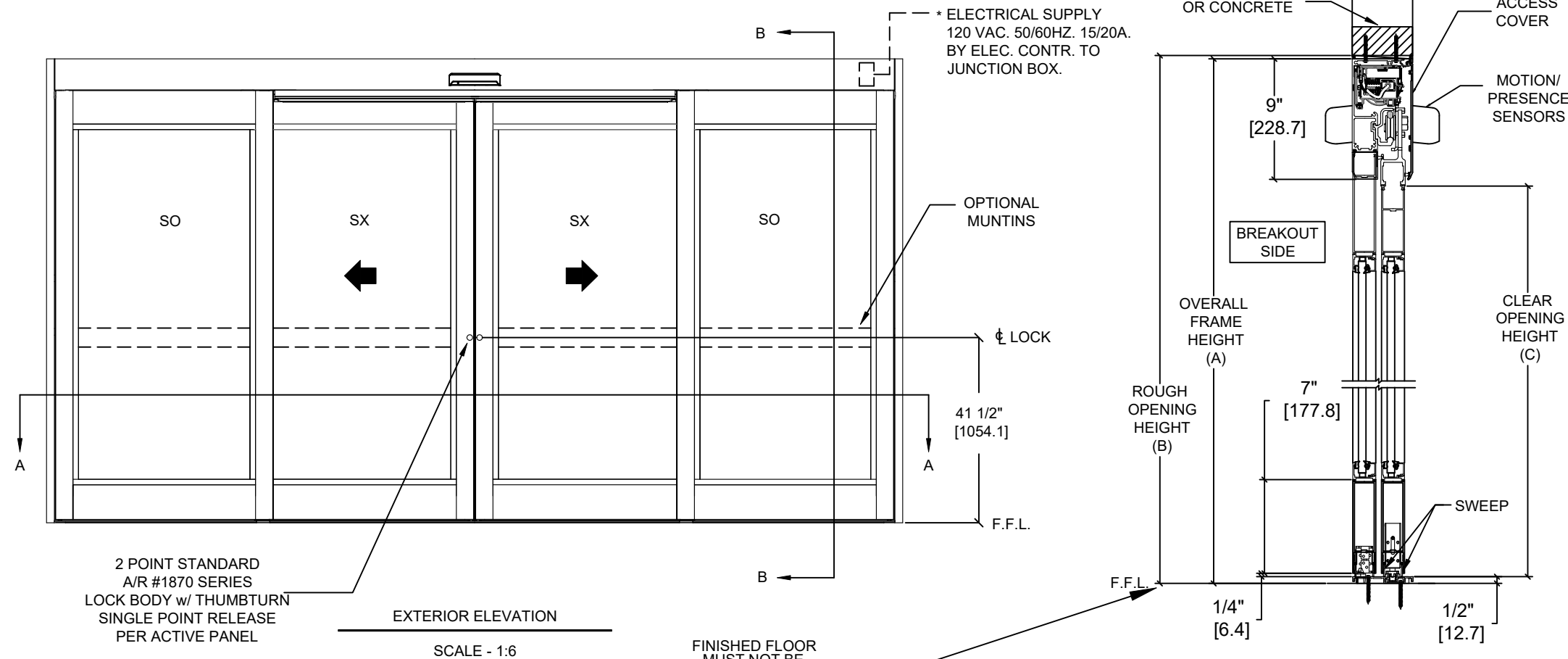


ASSA ABLOY SL500 Resilience R104

Overhead Concealed, Medium Stile, Full Breakout, Bi-Part,
Large & Small Missile Impact - Level D



	OVERALL FRAME WIDTH (A)	ROUGH OPENING (B)	CLEAR OPENING (C)	DOOR WIDTH (D)	BREAKOUT WIDTH (E)
AT MAX WIDTH	192" [4876.8]	192 1/2" [4889.5]	76 1/2" [1943.1]	49 5/8" [1260.5]	175 9/16" [4459.3]
WIDTH FORMULA	B - 1/2" A - [12.7]	A + 1/2" A + [12.7]	A/2 - 19 1/2" A/2 - [495.3]	A/4 + 1 5/8" A/4 + [41.3]	A - 16 7/16" A - [417.5]
AT MAX HEIGHT	104" [2641.6]	104 1/4" [2648.0]	94" [2387.6]		
HEIGHT FORMULA	B - 1/4" B - [6.35]	A + 1/4" A + [6.35]	A - 10" A - [254.0]		

GLASS FORMULA: OFW /4 - 7 1/2 [190.5] X OFH -23 1/2 [596.9]

NOTES:

STANDARD PACKAGE CONSISTS OF:

- STANDARD FINISH:
 - CLASS 1, .018MM, CLEAR- AA-M12C22A41
 - CLASS 1, .018MM, DARK BRONZE- AA-M12C22A44
- AUTOMATIC OPERATOR
- MEDIUM STILE RAILS
- THRESHOLD
- 2-POINT LOCK WITH LOCK INDICATOR
- 9/16" GLASS STOPS AND BLOCKS
 - 1/4" HS - .090" DUPONT SENTRYGLAS PLUS® - 1/4" HS
- DRY GLAZED
- MOTION/PRESENCE SENSORS
- 5-POSITION KNOB SWITCH
- BALL CATCH
- DUAL CONCEALED SWEEPS IN SX & SO PANELS
- 7" BOTTOM RAILS

OPTIONS AVAILABLE:

- SPECIAL FINISHES
- PANIC EXIT DEVICE
- 1" IG O.A. LAMINATED GLASS
 - 3/16" HS - .090" DUPONT SENTRYGLAS PLUS® - 3/16" HS - 3/8" AIR GAP - 3/16" FT
- 10" BOTTOM RAILS
- THRESHOLD LEAD-UP
- TRUE DIVIDED MUNTINS
- FALSE MUNTINS
- SEE SHEET OS-10 FOR ALL OTHER OPTIONS AND OPTION DETAILS

FOR MAXIMUM CURRENT DRAW, SEE PRODUCT SPECIFICATION,
INSTALLATION INSTRUCTIONS, OR THE UL LABEL ON THE EQUIPMENT.

TEST PROTOCOLS: TAS 201, TAS 202 & TAS 203
FLORIDA PRODUCT APPROVAL # FL30356
MIAMI-DADE NOA #21-0324.07

REFER TO RELEVANT [LOCAL, STATE, NATIONAL, OR AHJ]
BUILDING CODE FOR MIN DOOR HEIGHT & MIN/MAX WIDTH
ALLOWABLE FOR EGRESS REQUIREMENT IN CONJUNCTION
WITH TABLE.

DESIGN PRESSURE RATING	
WHERE WATER INFILTRATION REQUIREMENT IS NEEDED	WHERE WATER INFILTRATION REQUIREMENT IS NOT NEEDED
NOT APPROVED	+/- 80 PSF*

*PSF RATINGS RANGE FROM 80-115 PSF DEPENDENT ON PACKAGE WIDTH AND
HEIGHT. FOR SPECIFIC RATINGS, CONSULT PRODUCT APPROVALS OR PSF/SIZE
CALCULATOR ON THE PRODUCT WEBPAGE.

NOTE: PATENT PENDING

DWG NO.	1019914
DRN BY	SJF
DATE	9/18/19
CHK BY	
DATE	
REV	6.0
DATE	1/20/22

ASSA ABLOY