

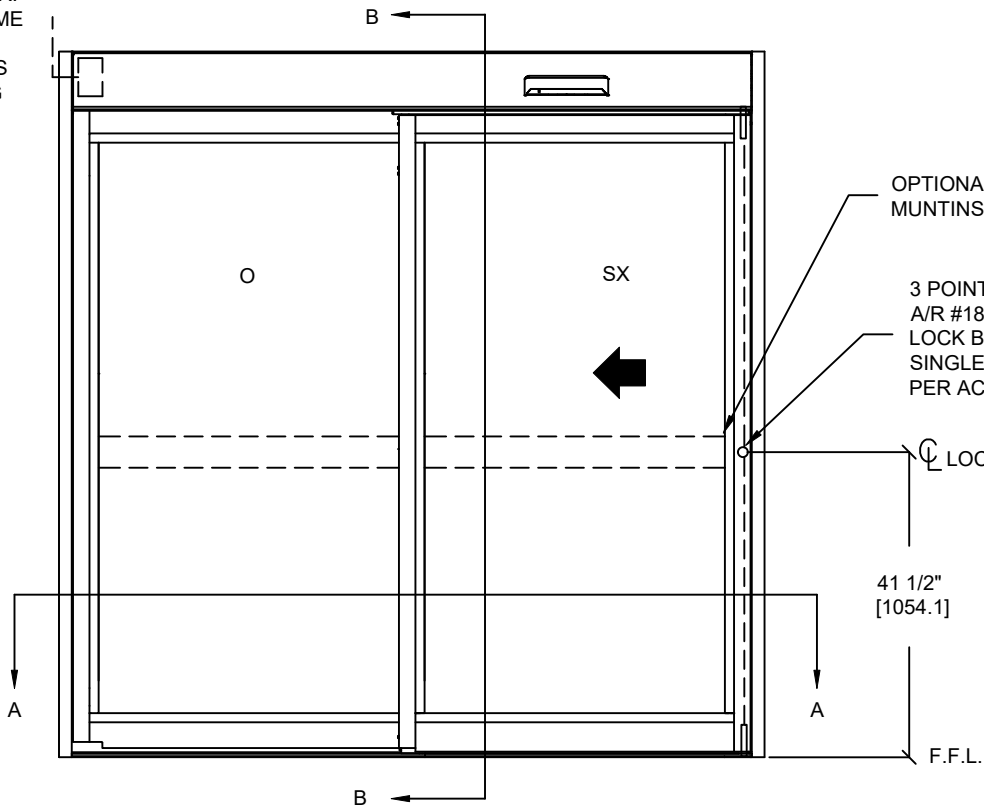
ASSA ABLOY

ASSA ABLOY ENTRANCE SYSTEMS  
1900 AIRPORT ROAD  
MONROE, NC 28110  
PHONE: 1-866-237-2687  
SPECDESK.NA.ENTRANCE@ASSAABLOY.COM

ASSA ABLOY SL500  
Windload R92

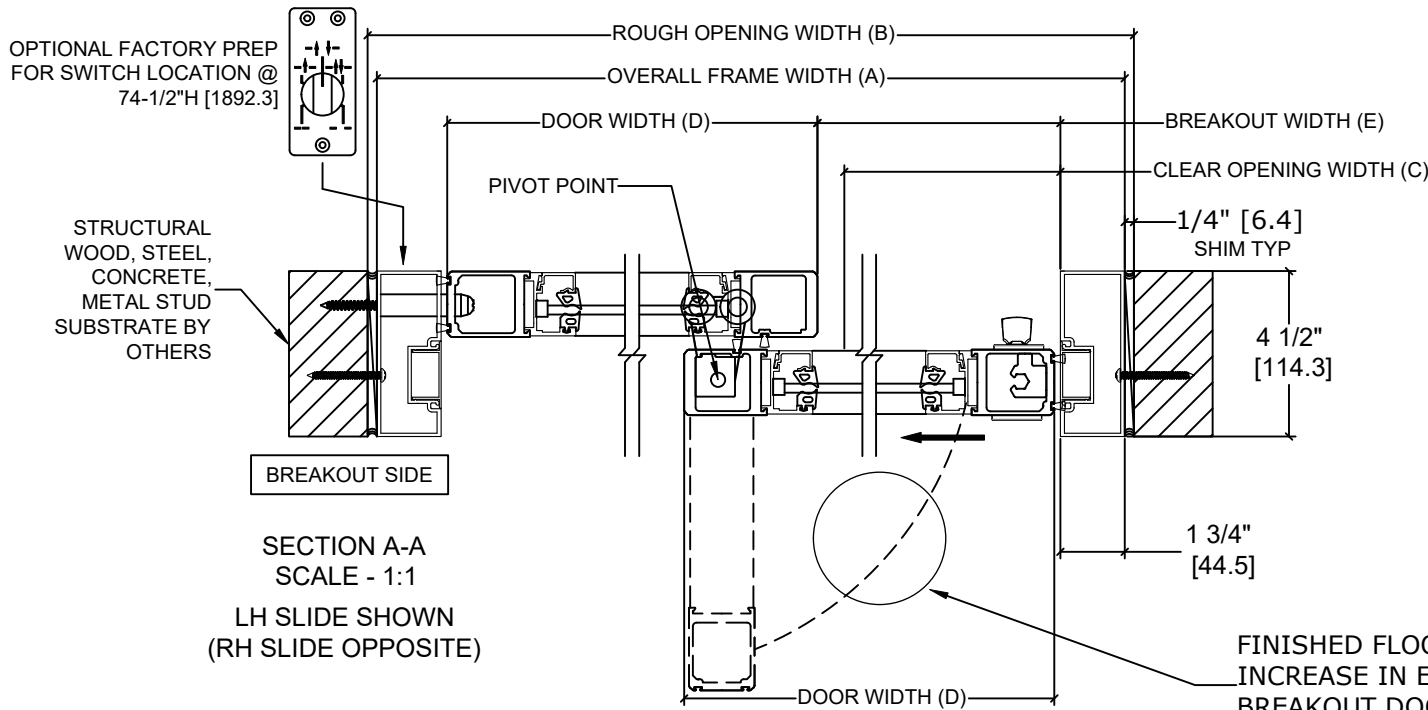
Overhead Concealed, Narrow Stile, Fixed Sidelite, Single Slide  
+/- 55PSF

ELECTRICAL SUPPLY  
110 VAC. 60HZ. 10A.  
BY ELEC. CONTR. TO  
JUNCTION BOX.  
SUPPLY IN SAME  
LOCATION  
REGARDLESS  
OF HANDING



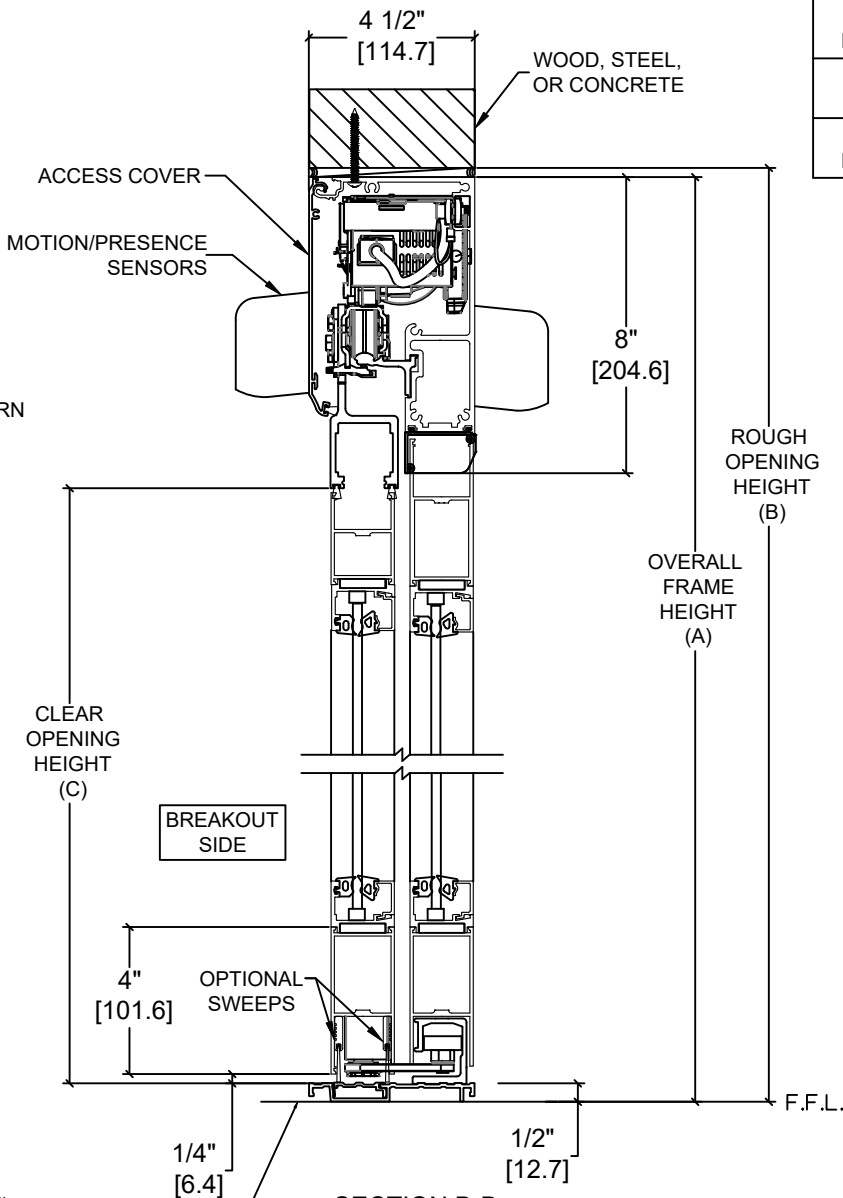
EXTERIOR ELEVATION

SCALE - 1:5  
LH SLIDE SHOWN  
(RH SLIDE OPPOSITE)



SECTION A-A  
SCALE - 1:1

LH SLIDE SHOWN  
(RH SLIDE OPPOSITE)



SECTION B-B  
SCALE - 1:1

FINISHED FLOOR MUST NOT  
BE CONCAVE ACROSS THE  
CLEAR DOOR OPENING AND  
NOT OUT OF LEVEL MORE  
THAN 1/8"

MODEL NO.	OVERALL FRAME WIDTH (A)	ROUGH OPENING (B)	CLEAR OPENING (C)	DOOR WIDTH (D)	BREAKOUT WIDTH (E)
AT MAX WIDTH	96" [2438.4]	96 1/2" [2451.1]	40" [1016.0]	47 7/8" [1216.0]	44 1/2" [1130.3]
WIDTH FORMULA	B - 1/2" B - [12.7]	A + 1/2" A + [12.7]	A/2 - 8" A/2 - [203.2]	A/2 - 1/8" A/2 - [3.2]	A/2 - 3 1/2" A/2 - [88.9]
AT MAX HEIGHT	92" [2336.8]	92 1/4" [2343.2]	83" [2108.2]		
HEIGHT FORMULA	B - 1/4" B - [6.35]	A + 1/4" A + [6.35]	A - 9" A - [228.6]		

GLASS FORMULA: OFW /2 - 5 3/4" [146.1] X OFH -17" [431.8]

NOTES:

STANDARD PACKAGE CONSISTS OF:

- STANDARD FINISH:
  - CLASS 1, .018MM, CLEAR- AA-M12C22A41
  - CLASS 1, .018MM, DARK BRONZE- AA-M12C22A44
- AUTOMATIC OPERATOR
- NARROW STILE RAILS
- THRESHOLD
- 3-POINT LOCK WITH LOCK INDICATOR
- 1/4" [6mm] TEMPERED GLASS
- DRY GLAZED
- MOTION/PRESENCE SENSORS
- 5-POSITION KNOB SWITCH
- BALL CATCH

OPTIONS AVAILABLE:

- SPECIAL FINISHES
- 7" & 10" BOTTOM RAILS, SEE SHEET AA-44 FOR DETAILS
- DUAL CONCEALED SWEEPS IN SX PANEL
- THRESHOLD LEAD-UP, SEE SHEET AA-30 FOR DETAILS
- MUNTINS, SEE SHEET AA-44 FOR DETAILS
- SEE SHEET OS-11 FOR ALL OTHER OPTIONS

FOR MAXIMUM CURRENT DRAW, SEE PRODUCT SPECIFICATION,  
INSTALLATION INSTRUCTIONS, OR THE UL LABEL ON THE EQUIPMENT.

TEST PROTOCOLS: ASTM F842-17 GRADE 10  
ASTM E 283 TESTED TO 1.57PSF FOR 1.0 CFM/SF/MIN  
ASTM E 330 TESTED TO +/-55PSF

REFER TO TEST REPORT NC.2019.031.02 FOR STRUCTURAL TESTING DETAILS  
REFER TO TEST REPORT 1021895 FOR U-VALUE TESTING DETAILS

REFER TO RELEVANT [LOCAL, STATE, NATIONAL, OR AHJ]  
BUILDING CODE FOR MIN DOOR HEIGHT & MIN/MAX WIDTH  
ALLOWABLE FOR EGRESS REQUIREMENT IN CONJUNCTION  
WITH TABLE.

DIMENSIONS ARE IN INCHES [mm]

DWG NO. 1021501					
DRN BY	SJF	DATE	9/9/20	CHK BY	DBN
DATE	5/19/21	REV	1.0	DATE	01/27/2022
<div>ASSA ABLOY</div>					