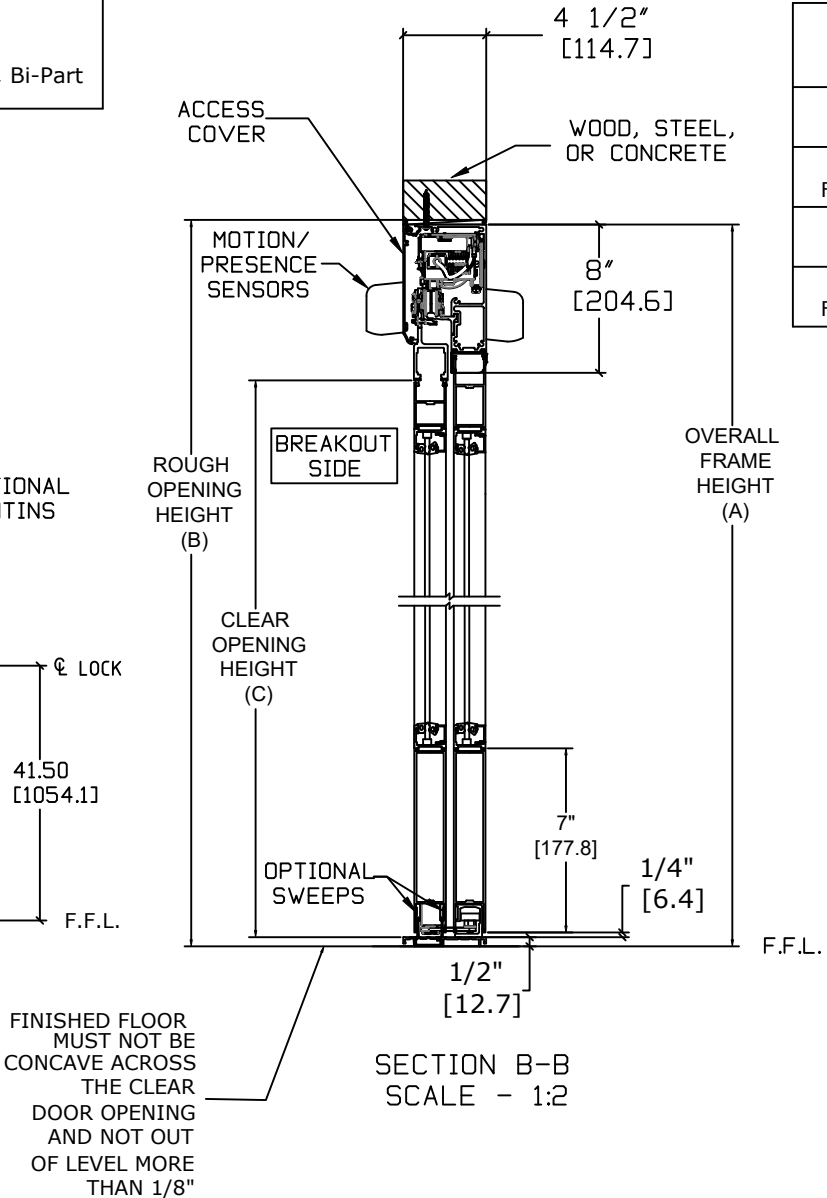
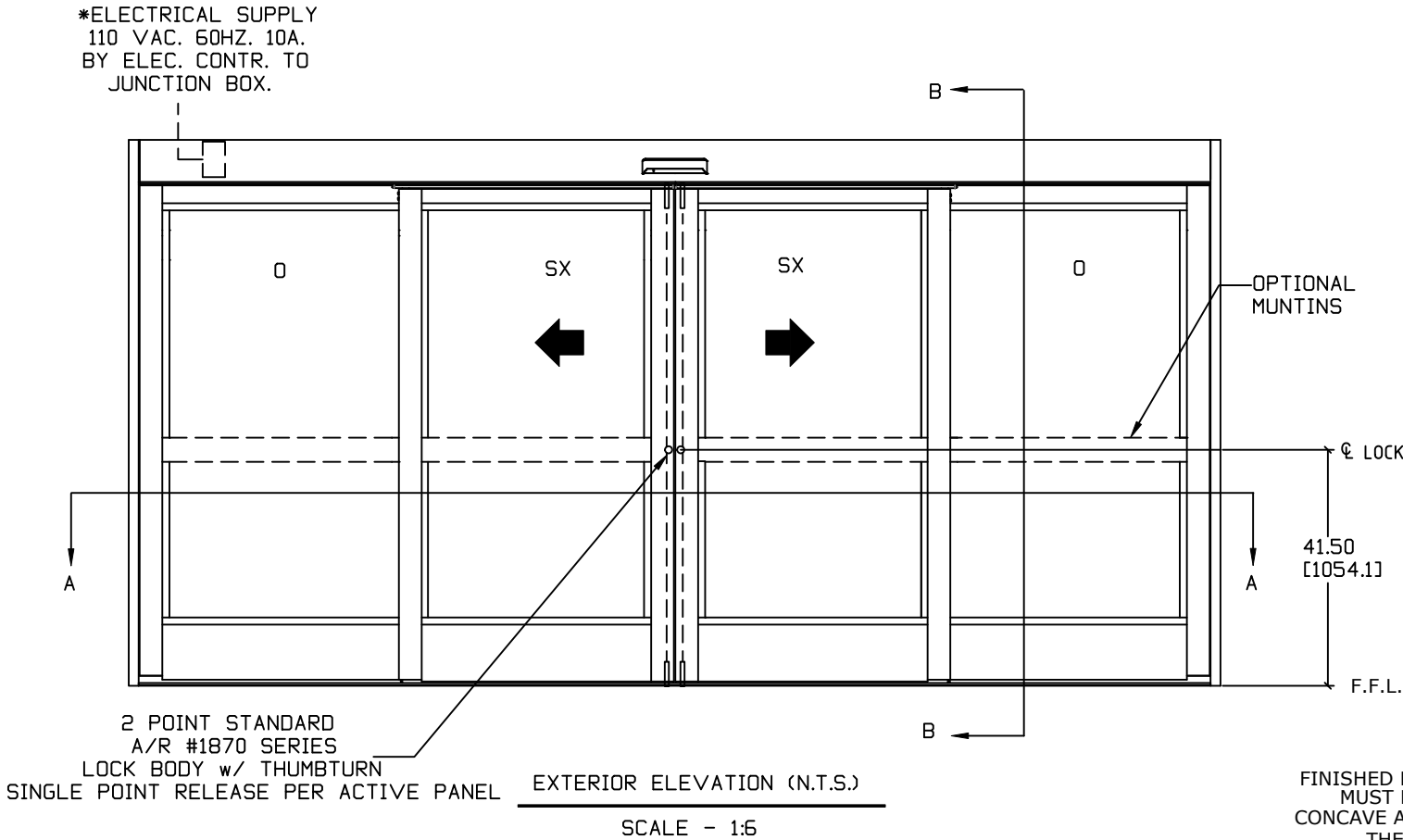


Overhead Concealed, Medium Stile, Fixed Sidelite, Bi-Part
+/- 55PSF



	OVERALL FRAME WIDTH (A)	ROUGH OPENING (B)	CLEAR OPENING (C)	DOOR WIDTH (D)	BREAKOUT WIDTH (E)
AT MAX WIDTH	192" [4876.8]	192 1/2" [4889.5]	76 7/16" [1941.5]	49 5/8" [1260.5]	92 3/4" [2355.9]
WIDTH FORMULA	B - 1/2" B - [12.7]	A + 1/2" A + [12.7]	A/2 - 19 9/16" A/2 - [496.9]	A/4 + 1 5/8" A/4 + [41.3]	A/2 - 3 1/4" A/2 - [82.6]
AT MAX HEIGHT	92" [2336.8]	92 1/4" [2343.2]	83" [2108.2]		
HEIGHT FORMULA	B - 1/4" B - [6.35]	A + 1/4" A + [6.35]	A - 9" A - [228.6]		

GLASS FORMULA: OFW /4 - 7 1/2" [190.5] X OFH -20" [508.0]

NOTES:

STANDARD PACKAGE CONSISTS OF:

- STANDARD FINISH:
CLASS 1, .018MM, CLEAR- AA-M12C22A41
CLASS 1, .018MM, DARK BRONZE- AA-M12C22A44
AUTOMATIC OPERATOR
MEDIUM STILE RAILS
THRESHOLD
2-POINT LOCK WITH LOCK INDICATOR
1/4" [6mm] TEMPERED GLASS
DRY GLAZED
MOTION/PRESENCE SENSORS
5-POSITION KNOB SWITCH
BALL CATCH
7" BOTTOM RAILS, SEE SHEET AA-44 FOR DETAILS

OPTIONS AVAILABLE:

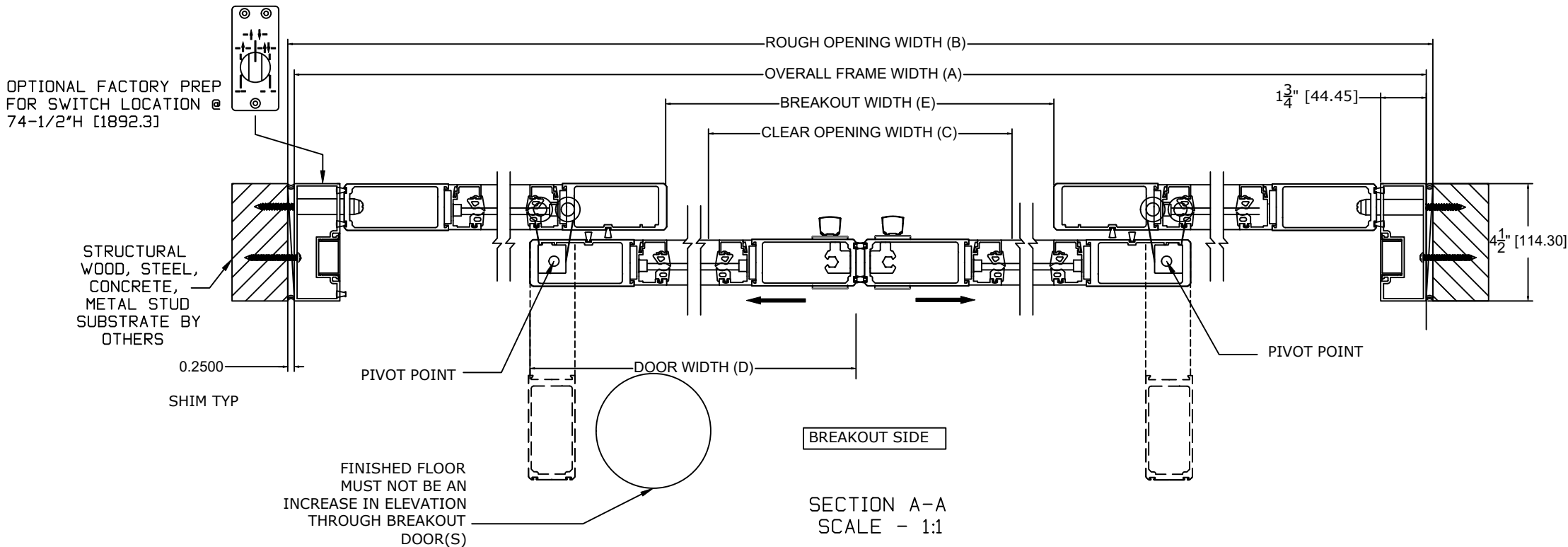
- SPECIAL FINISHES
- 10" BOTTOM RAILS, SEE SHEET AA-44 FOR DETAILS
- DUAL CONCEALED SWEEPS IN SX PANELS
- THRESHOLD LEAD-UP SEE SHEET AA-30 FOR DETAILS
- SEE SHEET OS-11 FOR ALL OTHER OPTIONS

FOR MAXIMUM CURRENT DRAW, SEE PRODUCT SPECIFICATION,
INSTALLATION INSTRUCTIONS, OR THE UL LABEL ON THE EQUIPMENT.

TEST PROTOCOLS: ASTM F842-17 GRADE 10
ASTM E 283 TESTED TO 1.57PSF FOR 1.0 CFM/SF/MIN
ASTM E 330 TESTED TO +/-55PSF
REFER TO TEST REPORT NC.2019.031.02 FOR STRUCTURAL TESTING DETAILS
REFER TO TEST REPORT 1021895 FOR U-VALUE TESTING DETAILS

REFER TO RELEVANT [LOCAL, STATE, NATIONAL, OR AHJ]
BUILDING CODE FOR MIN DOOR HEIGHT & MIN/MAX WIDTH
ALLOWABLE FOR EGRESS REQUIREMENT IN CONJUNCTION
WITH TABLE.

DIMENSIONS ARE IN INCHES [mm]



DWG NO. 1021498											
DRN BY SJF		DATE 9/9/20		CHK BY DBN		DATE 5/19/20		REV.1.0		DATE 01/27/2022	
<div></div> <div></div> <div></div> <div></div>											
ASSA ABLOY						<div></div> <div></div> <div></div>					