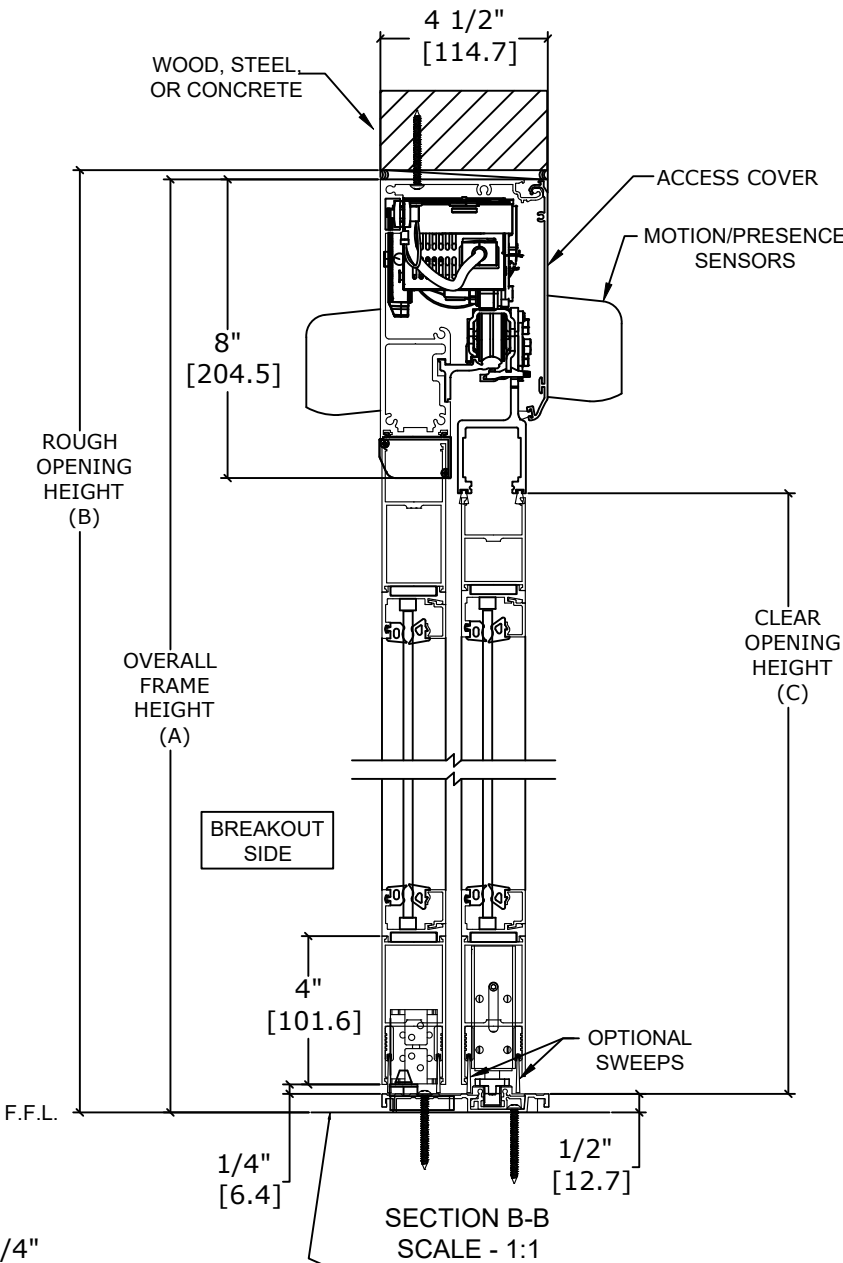
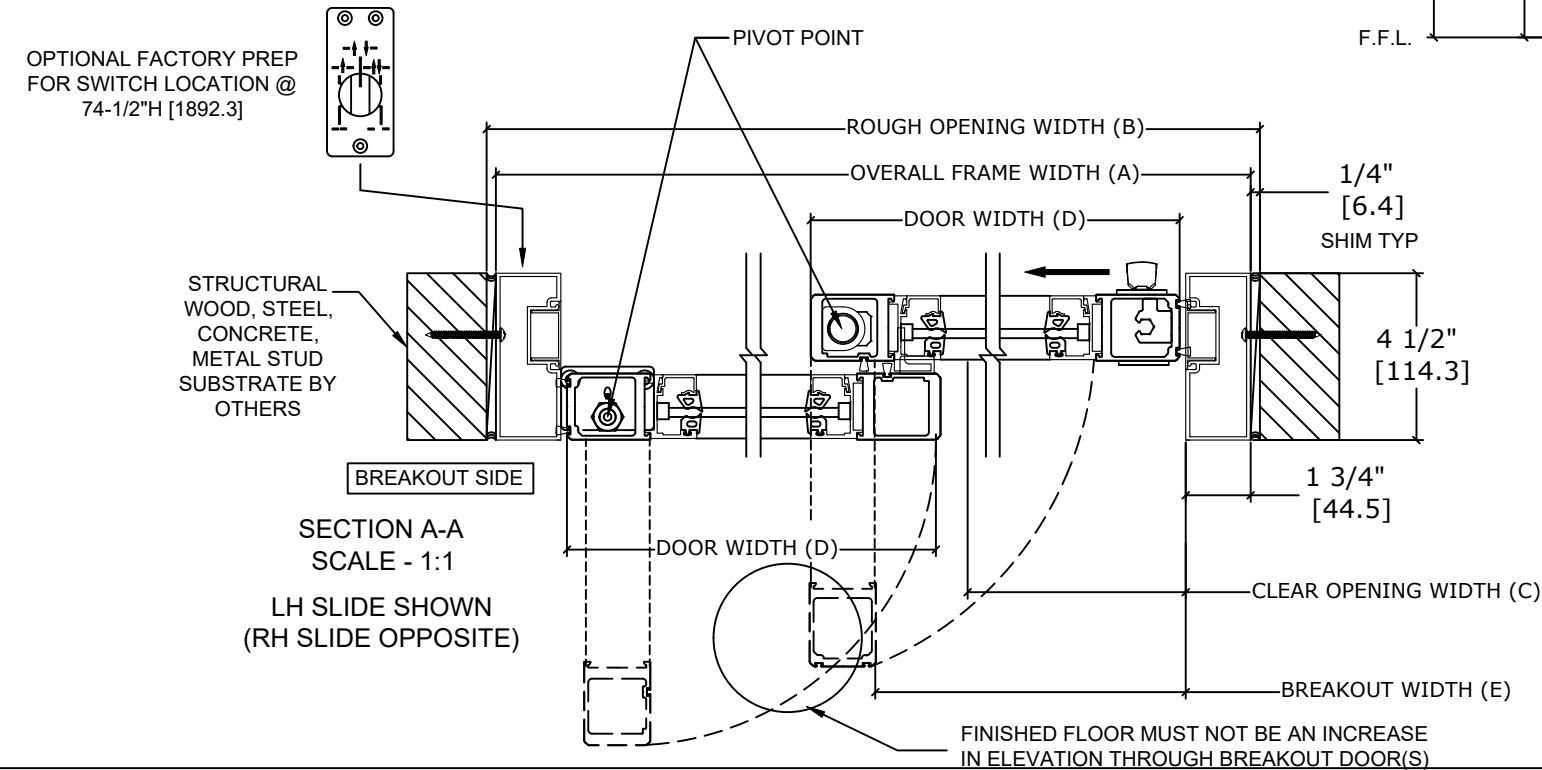
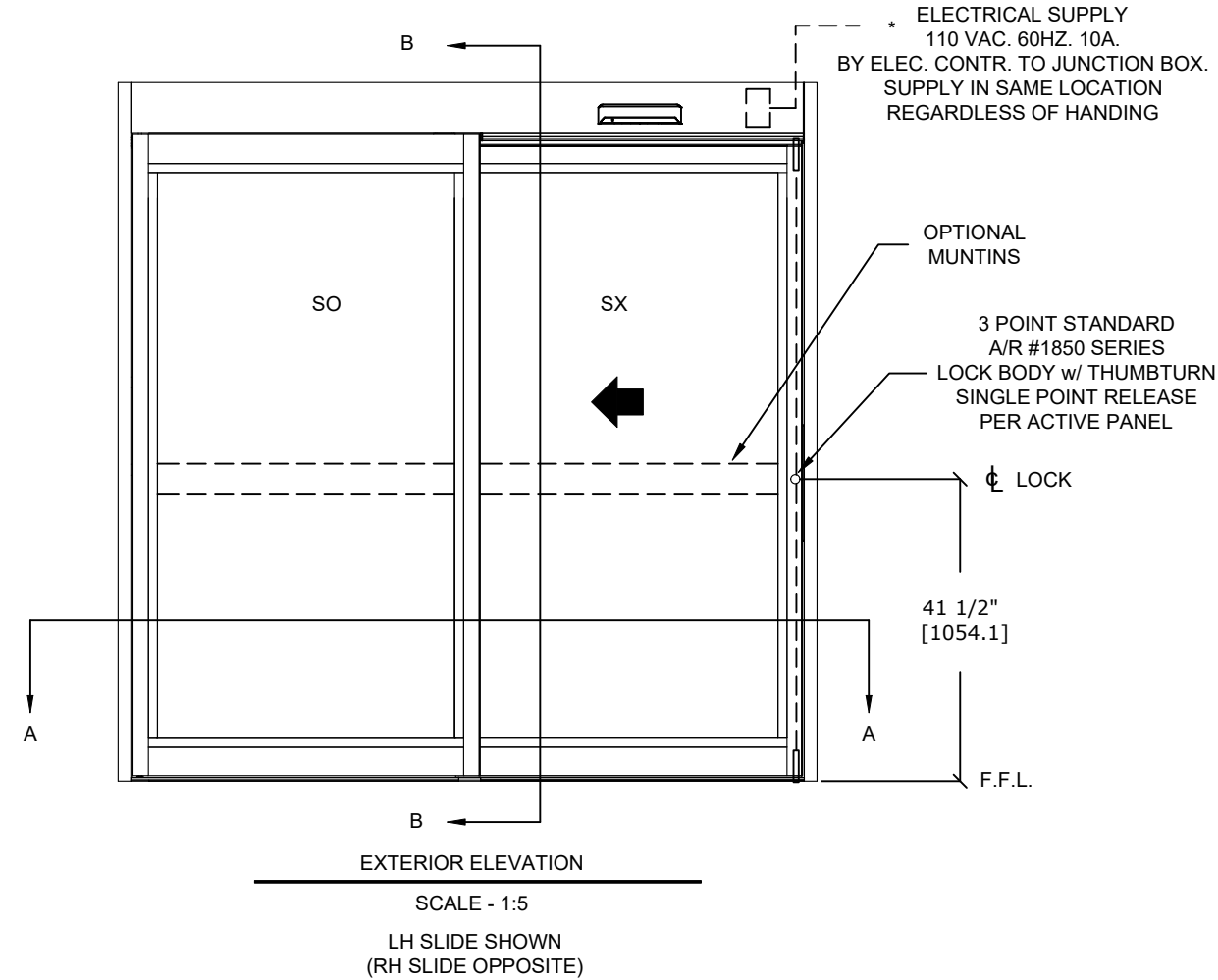


ASSA ABLOY SL500  
Windload R92

Overhead Concealed, Narrow Stile, Full Breakout, Single Slide  
+/- 55PSF



| MODEL NO.      | OVERALL FRAME WIDTH (A) | ROUGH OPENING (B)      | CLEAR OPENING (C)         | DOOR WIDTH (D)            | BREAKOUT WIDTH (E)     |
|----------------|-------------------------|------------------------|---------------------------|---------------------------|------------------------|
| AT MAX WIDTH   | 96"<br>[2438.4]         | 96 1/2"<br>[2451.1]    | 40"<br>[1016.0]           | 47 7/8"<br>[1216.0]       | 86"<br>[2184.4]        |
| WIDTH FORMULA  | B - 1/2"<br>B - [12.7]  | A + 1/2"<br>A + [12.7] | A/2 - 8"<br>A/2 - [203.2] | A/2 - 1/8"<br>A/2 - [3.2] | A - 10"<br>A - [254.0] |
| AT MAX HEIGHT  | 92"<br>[2336.8]         | 92 1/4"<br>[2343.2]    | 83"<br>[2108.2]           |                           |                        |
| HEIGHT FORMULA | B - 1/4"<br>B - [6.35]  | A + 1/4"<br>A + [6.35] | A - 9"<br>A - [228.6]     |                           |                        |

GLASS FORMULA: OFW /2 - 5 3/4" [146.1] X OFH -17" [431.8]

- NOTES:
- STANDARD PACKAGE CONSISTS OF:
- STANDARD FINISH:
    - CLASS 1, .018MM, CLEAR- AA-M12C22A41
    - CLASS 1, .018MM, DARK BRONZE- AA-M12C22A44
  - AUTOMATIC OPERATOR
  - NARROW STILE RAILS
  - THRESHOLD
  - 3-POINT LOCK WITH LOCK INDICATOR
  - 1/4" [6mm] TEMPERED GLASS
  - DRY GLAZED
  - MOTION/PRESENCE SENSORS
  - 5-POSITION KNOB SWITCH
  - BALL CATCH
  - 4" BOTTOM RAILS

- OPTIONS AVAILABLE:
- SPECIAL FINISHES
  - PANIC EXIT DEVICE
  - 7" /10" BOTTOM RAILS
  - DUAL CONCEALED SWEEPS IN SX & SO PANELS
  - THRESHOLD LEAD-UP, SEE SHEET AA-30 FOR DETAILS
  - TRUE DIVIDED MUNTINS
  - FALSE MUNTINS
  - SEE SHEET OS-11 FOR ALL OTHER OPTIONS AND OPTION DETAILS

FOR MAXIMUM CURRENT DRAW, SEE PRODUCT SPECIFICATION, INSTALLATION INSTRUCTIONS, OR THE UL LABEL ON THE EQUIPMENT.

TEST PROTOCOLS: ASTM F842-17 GRADE 10  
ASTM E 283 TESTED TO 1.57PSF FOR 1.0 CFM/SF/MIN  
ASTM E 330 TESTED TO +/-55PSF

REFER TO TEST REPORT NC.2019.031.01 FOR STRUCTURAL TESTING DETAILS  
REFER TO TEST REPORT 1021895 FOR U-VALUE TESTING DETAILS

REFER TO RELEVANT [LOCAL, STATE, NATIONAL, OR AHJ] BUILDING CODE FOR MIN DOOR HEIGHT & MIN/MAX WIDTH ALLOWABLE FOR EGRESS REQUIREMENT IN CONJUNCTION WITH TABLE.

|         |         |      |            |        |     |
|---------|---------|------|------------|--------|-----|
| DWG NO. | 1021497 |      |            |        |     |
| DRN BY  | SJF     | DATE | 9/9/2020   | CHK BY | DBN |
|         |         | DATE | 05/19/21   | REV.   | 1.0 |
|         |         | DATE | 01/27/2022 |        |     |
|         |         |      |            |        |     |
|         |         |      |            |        |     |
|         |         |      |            |        |     |
|         |         |      |            |        |     |
|         |         |      |            |        |     |
|         |         |      |            |        |     |