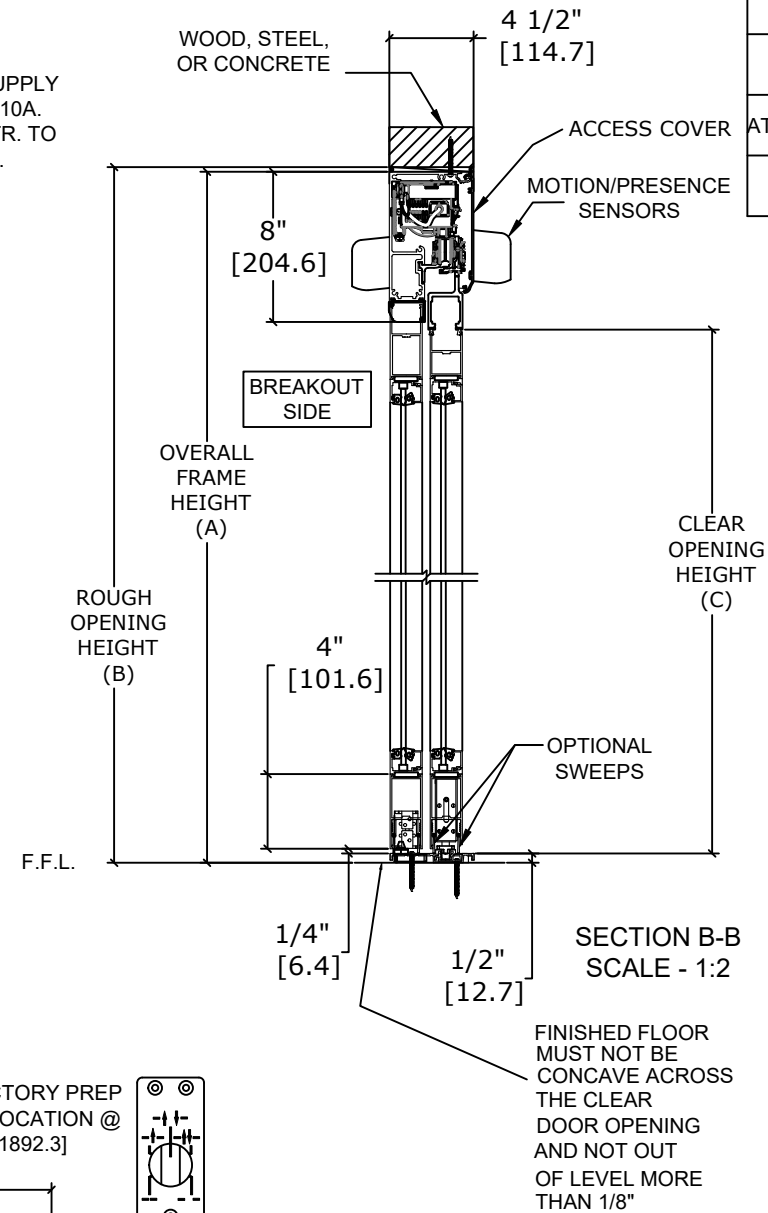
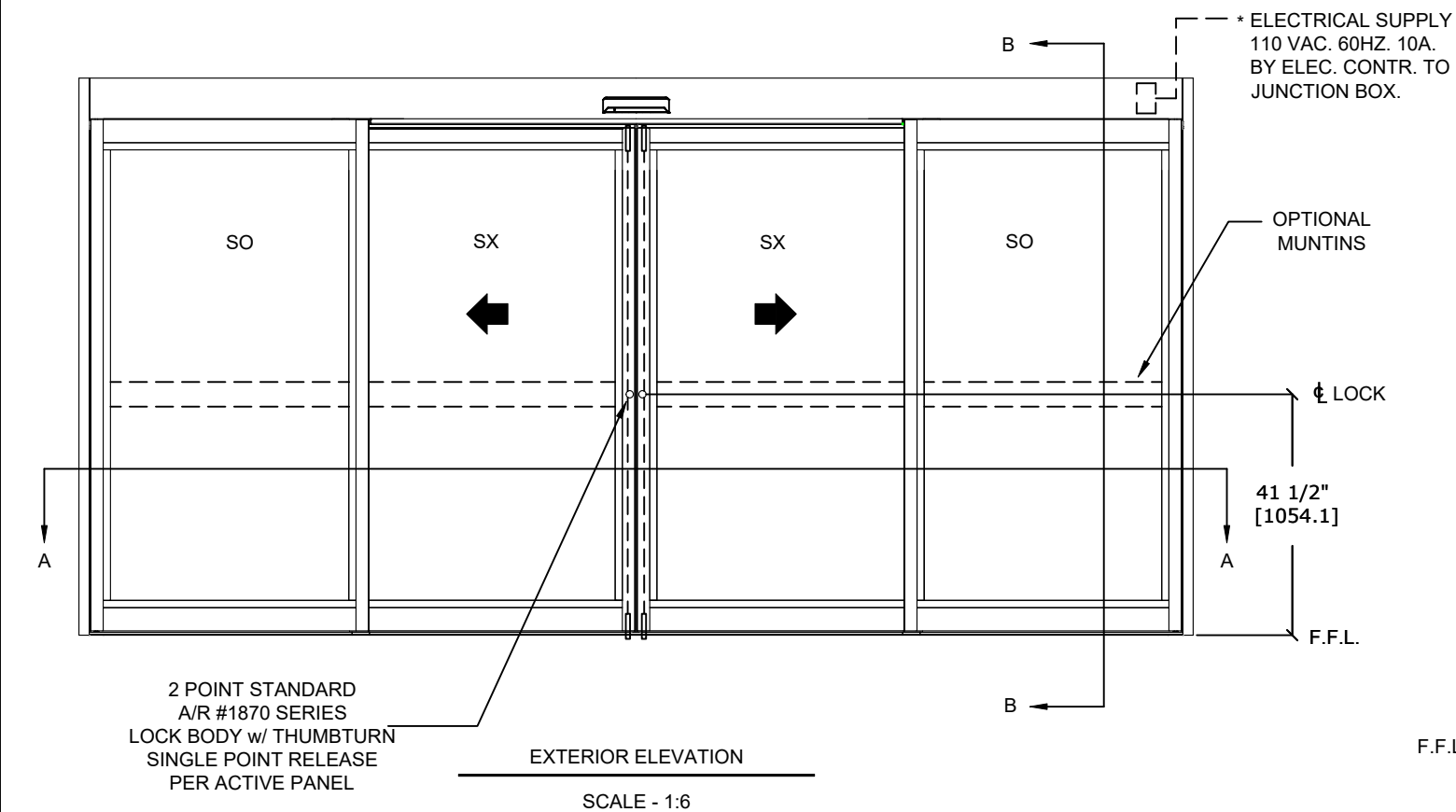


ASSA ABLOY SL500
Windload R92

Overhead Concealed, Narrow Stile, Full Breakout, Bi-Part
+/- 55PSF



	OVERALL FRAME WIDTH (A)	ROUGH OPENING (B)	CLEAR OPENING (C)	DOOR WIDTH (D)	BREAKOUT WIDTH (E)
AT MAX WIDTH	192" [4876.8]	192 1/2" [4889.5]	81 11/16" [2074.9]	48 3/4" [1238.3]	175 7/16" [4456.1]
WIDTH FORMULA	B - 1/2" B - [12.7]	A + 1/2" A + [12.7]	A/2 - 14 5/16" A/2 - [363.5]	A/4 + 3/4" A/4 + [19.1]	A - 16 9/16" A - [420.7]
AT MAX HEIGHT	92" [2336.8]	92 1/4" [2343.2]	83" [2108.2]		
HEIGHT FORMULA	B - 1/4" B - [6.35]	A + 1/4" A + [6.35]	A - 9" A - [228.6]		

GLASS FORMULA: OFW /4 - 4 7/8" [123.8] X OFH -17" [431.8]

NOTES:

STANDARD PACKAGE CONSISTS OF:

- STANDARD FINISH:
CLASS 1, .018MM, CLEAR- AA-M12C22A41
- CLASS 1, .018MM, DARK BRONZE- AA-M12C22A44
- AUTOMATIC OPERATOR
- NARROW STILE RAILS
- THRESHOLD
- 2-POINT LOCK WITH LOCK INDICATOR
- 1/4" [6mm] TEMPERED GLASS
- DRY GLAZED
- MOTION/PRESENCE SENSORS
- 5-POSITION KNOB SWITCH
- BALL CATCH
- 4" BOTTOM RAILS

OPTIONS AVAILABLE:

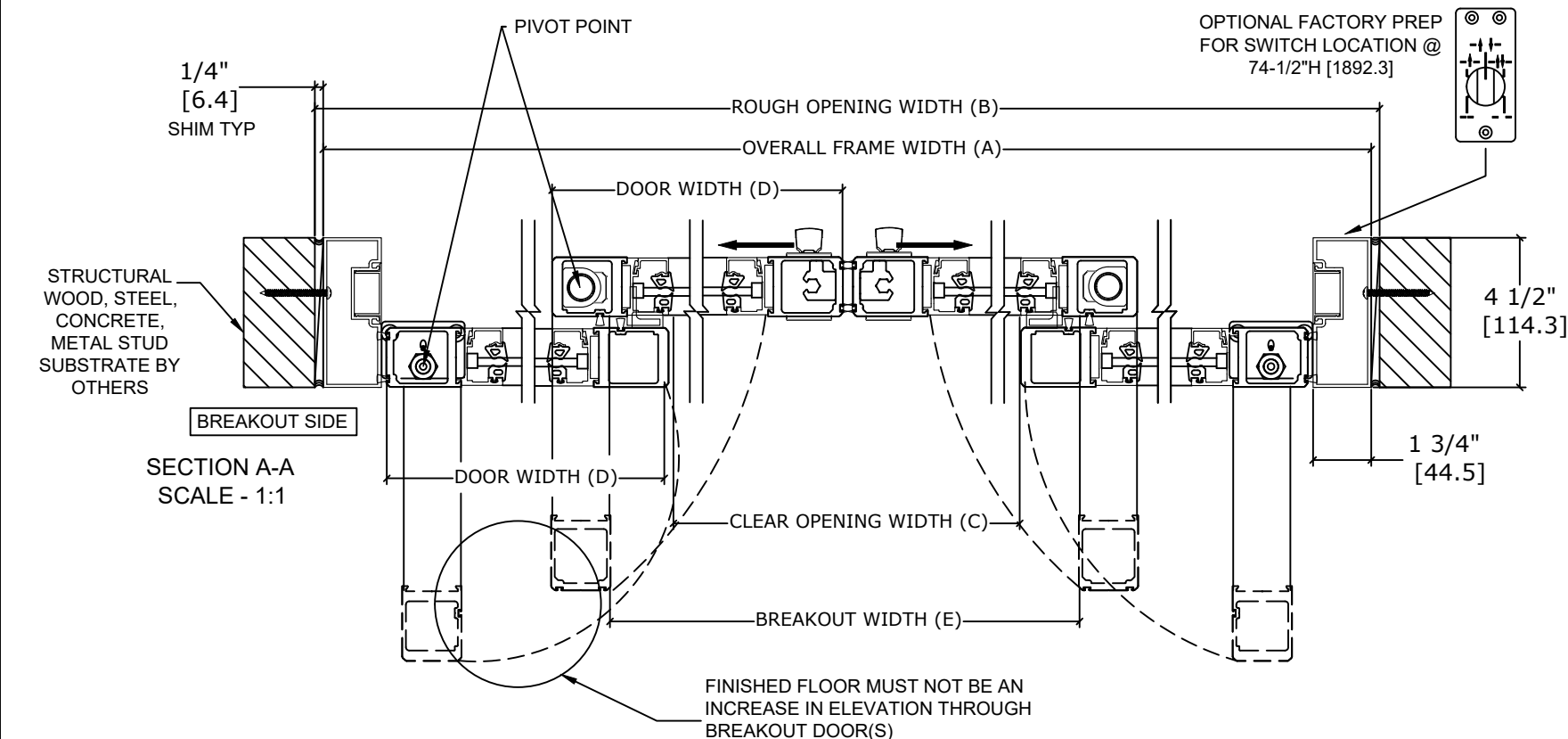
- SPECIAL FINISHES
- PANIC EXIT DEVICE
- 7" /10" BOTTOM RAILS
- DUAL CONCEALED SWEEPS IN SX & SO PANELS
- THRESHOLD LEAD-UP, SEE SHEET AA-30 FOR DETAILS
- TRUE DIVIDED MUNTINS
- FALSE MUNTINS
- SEE SHEET OS-11 FOR ALL OTHER OPTIONS AND
OPTION DETAILS

FOR MAXIMUM CURRENT DRAW, SEE PRODUCT SPECIFICATION,
INSTALLATION INSTRUCTIONS, OR THE UL LABEL ON THE EQUIPMENT.

TEST PROTOCOLS: ASTM F842-17 GRADE 10
ASTM E 283 TESTED TO 1.57PSF FOR 1.0 CFM/SF/MIN
ASTM E 330 TESTED TO +/-55PSF

REFER TO TEST REPORT NC.2019.031.01 FOR STRUCTURAL TESTING DETAILS
REFER TO TEST REPORT 1021895 FOR U-VALUE TESTING DETAILS

REFER TO RELEVANT [LOCAL, STATE, NATIONAL, OR AHJ]
BUILDING CODE FOR MIN DOOR HEIGHT & MIN/MAX WIDTH
ALLOWABLE FOR EGRESS REQUIREMENT IN CONJUNCTION
WITH TABLE.



DWG NO.		1021495									
DRN BY	SJF	DATE	9/9/20	CHK BY	DBN	DATE	05/19/21	REV.	1.0	DATE	01/27/2022
<hr/> <hr/> <hr/> <hr/> <hr/>											
ASSA ABLOY						<hr/> <hr/> <hr/> <hr/>					