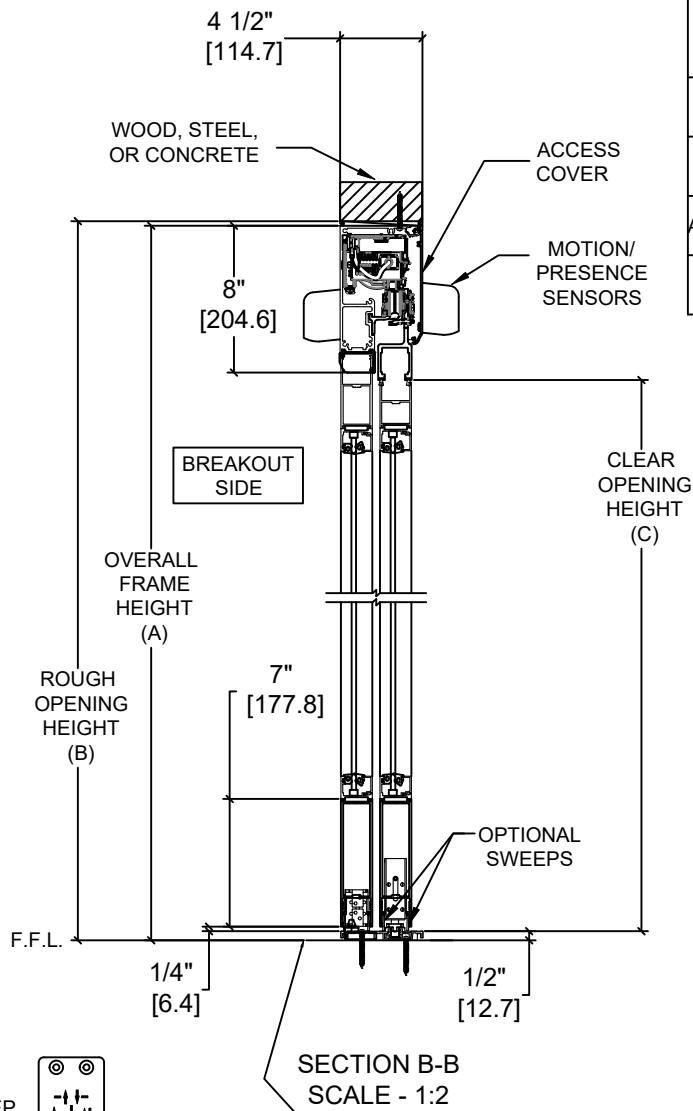
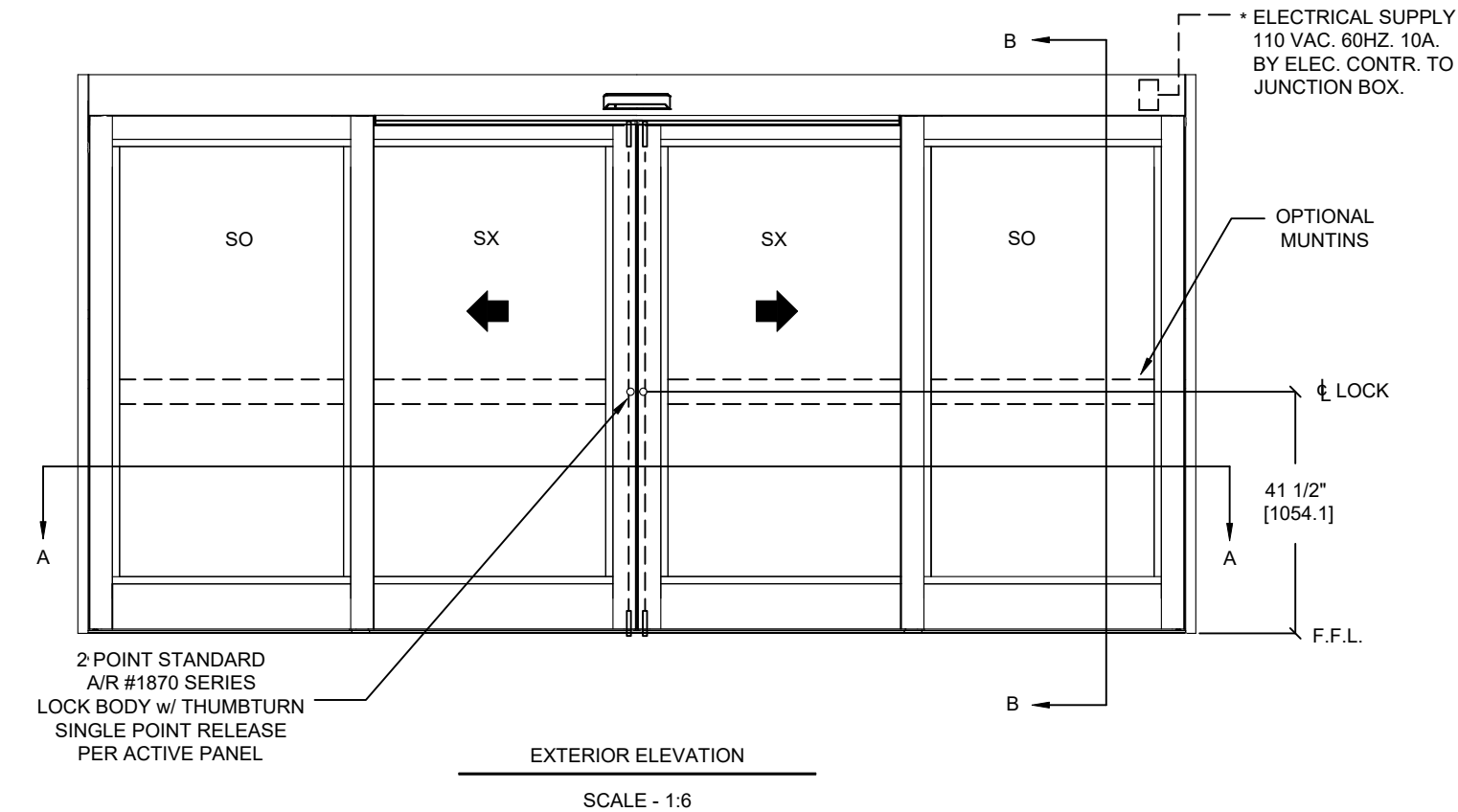


ASSA ABLOY

ASSA ABLOY ENTRANCE SYSTEMS  
1900 AIRPORT ROAD  
MONROE, NC 28110  
PHONE: 1-866-237-2687  
SPECDESK.NA.ENTRANCE@ASSAABLOY.COM

ASSA ABLOY SL500  
Windload R92

Overhead Concealed, Medium Stile, Full Breakout, Bi-Part  
+/- 55PSF



	OVERALL FRAME WIDTH (A)	ROUGH OPENING (B)	CLEAR OPENING (C)	DOOR WIDTH (D)	BREAKOUT WIDTH (E)
AT MAX WIDTH	192" [4876.8]	192 1/2" [4889.5]	76 7/16" [1941.5]	49 5/8" [1260.5]	171 15/16" [4367.2]
WIDTH FORMULA	B - 1/2" B - [12.7]	A + 1/2" A + [12.7]	A/2 - 19 9/16" A/2 - [496.9]	A/4 + 1 5/8" A/4 + [41.3]	A - 20 1/16" A - [509.6]
AT MAX HEIGHT	92" [2336.8]	92 1/4" [2343.2]	83" [2108.2]		
HEIGHT FORMULA	B - 1/4" B - [6.35]	A + 1/4" A + [6.35]	A - 9" A - [228.6]		

GLASS FORMULA: OFW /4 - 7 1/2" [190.5] X OFH -20" [508]

NOTES:

STANDARD PACKAGE CONSISTS OF:

- STANDARD FINISH:
  - CLASS 1, .018MM, CLEAR- AA-M12C22A41
  - CLASS 1, .018MM, DARK BRONZE- AA-M12C22A44
- AUTOMATIC OPERATOR
- MEDIUM STILE RAILS
- THRESHOLD
- 2-POINT LOCK WITH LOCK INDICATOR
- 1/4" [6mm] TEMPERED GLASS
- DRY GLAZED
- MOTION/PRESENCE SENSORS
- 5-POSITION KNOB SWITCH
- BALL CATCH
- 7" BOTTOM RAILS

OPTIONS AVAILABLE:

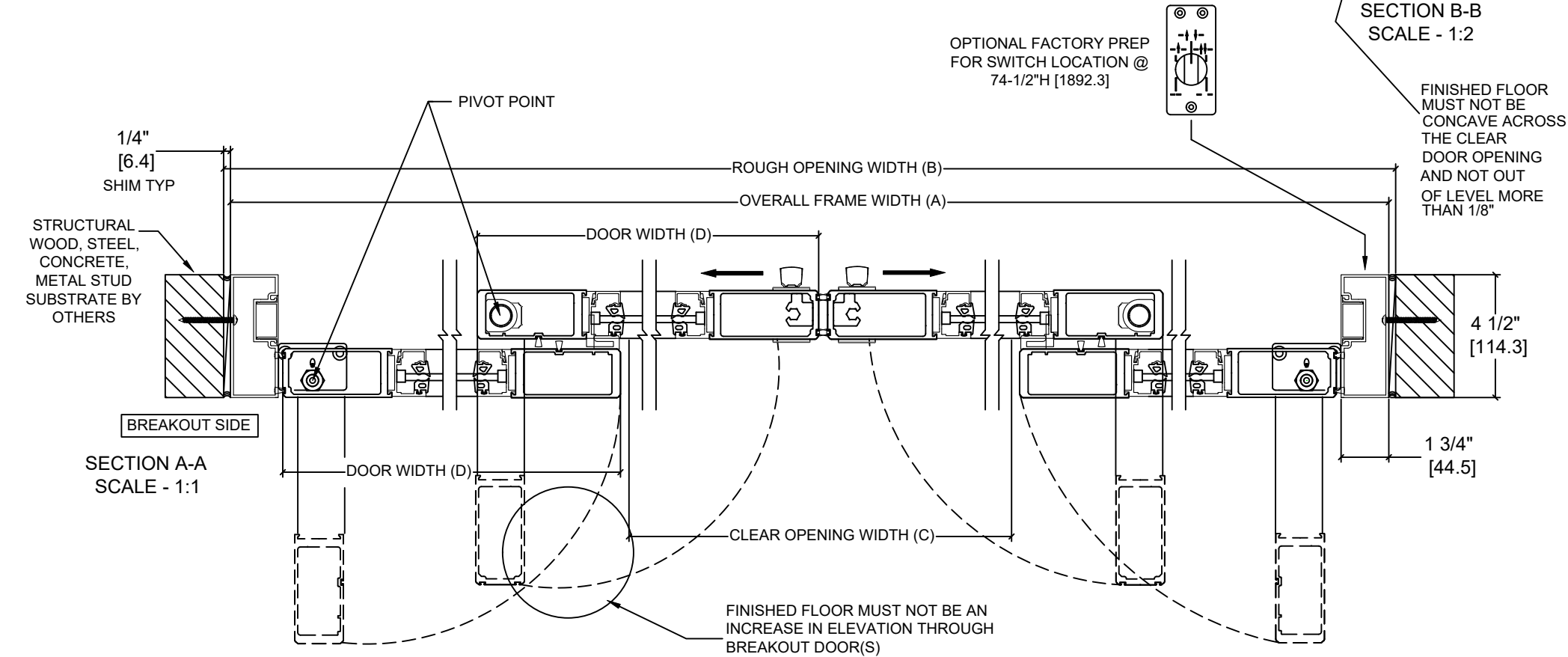
- SPECIAL FINISHES
- 3/8" THICK STAINLESS STEEL LOCK GUARD
- PANIC EXIT DEVICE
- 10" BOTTOM RAILS
- DUAL CONCEALED SWEEPS IN SX & SO PANELS
- THRESHOLD LEAD-UP, SEE SHEET AA-30 FOR DETAILS
- TRUE DIVIDED MUNTINS
- SEE SHEET OS-11 FOR ALL OTHER OPTIONS AND OPTION DETAILS

FOR MAXIMUM CURRENT DRAW, SEE PRODUCT SPECIFICATION,  
INSTALLATION INSTRUCTIONS, OR THE UL LABEL ON THE EQUIPMENT.

TEST PROTOCOLS: ASTM F842-17 GRADE 10  
ASTM E 283 TESTED TO 1.57PSF FOR 1.0 CFM/SF/MIN  
ASTM E 330 TESTED TO +/-55PSF

REFER TO TEST REPORT NC.2019.031.01 FOR STRUCTURAL TESTING DETAILS  
REFER TO TEST REPORT 1021895 FOR U-VALUE TESTING DETAILS

REFER TO RELEVANT [LOCAL, STATE, NATIONAL, OR AHJ]  
BUILDING CODE FOR MIN DOOR HEIGHT & MIN/MAX WIDTH  
ALLOWABLE FOR EGRESS REQUIREMENT IN CONJUNCTION  
WITH TABLE.



DWG NO. 1021494											
DRN BY	SJF	DATE	9/9/20	CHK BY	DBN	DATE	05/19/21	REV.	1.0	DATE	1/27/2022

ASSA ABLOY