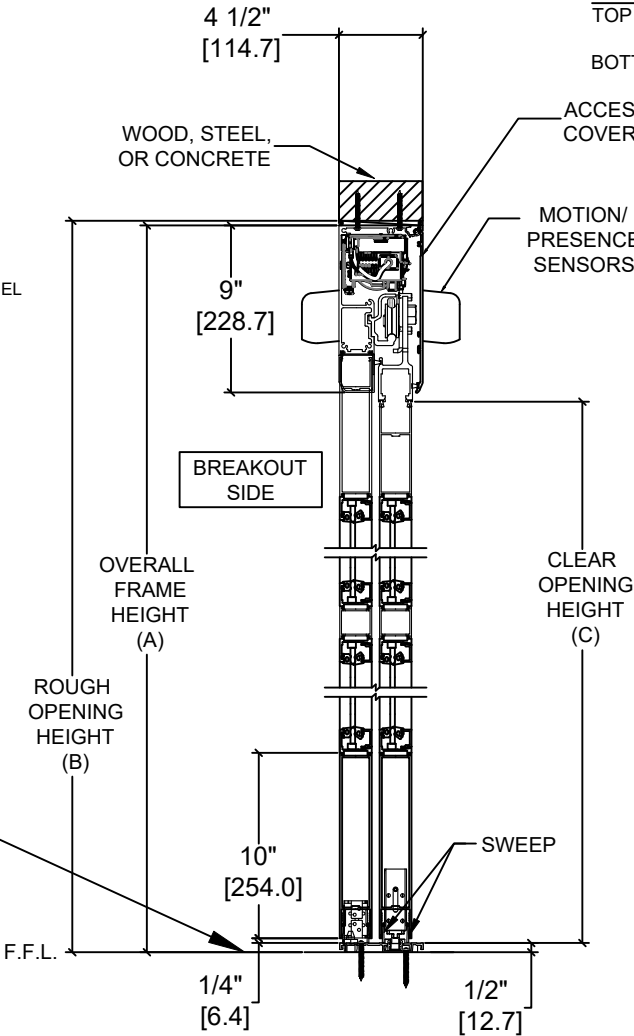
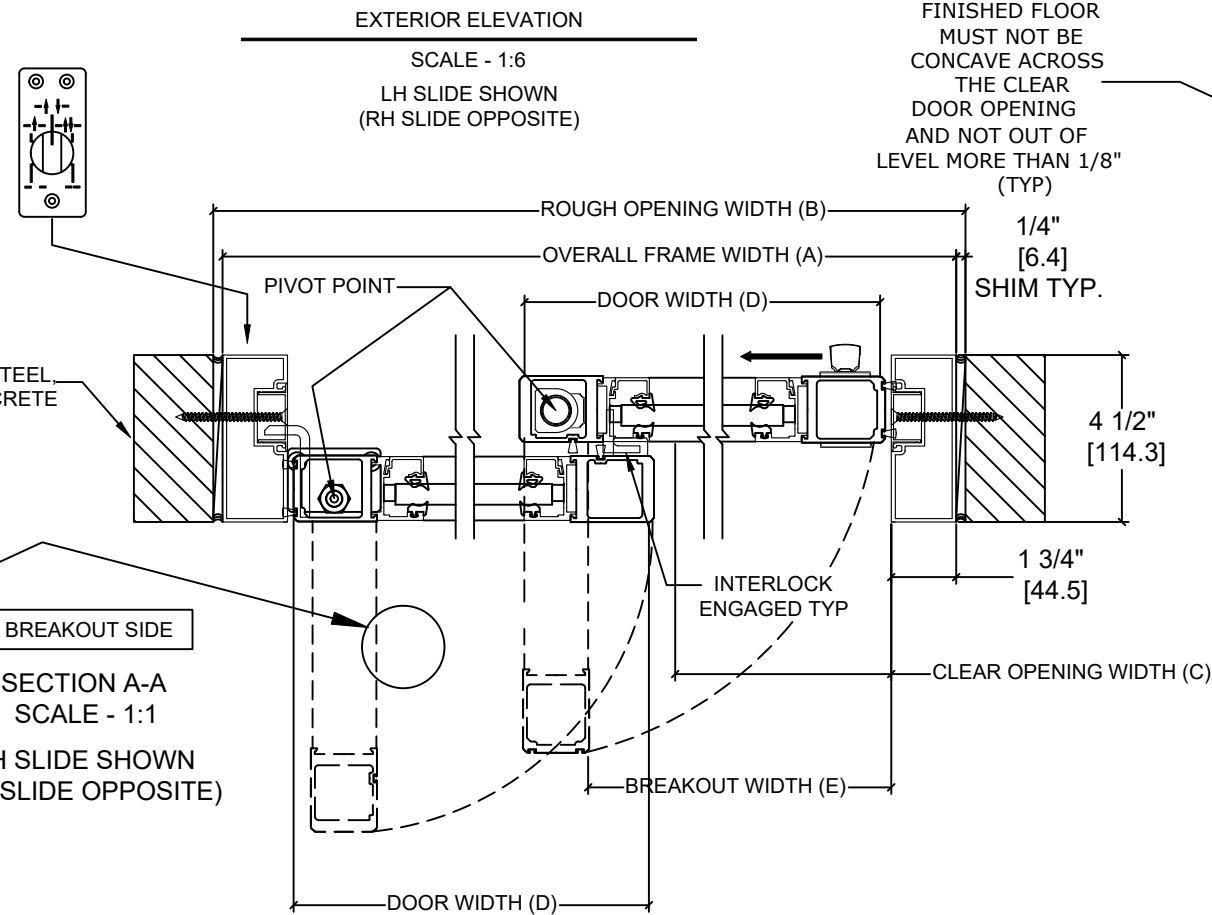
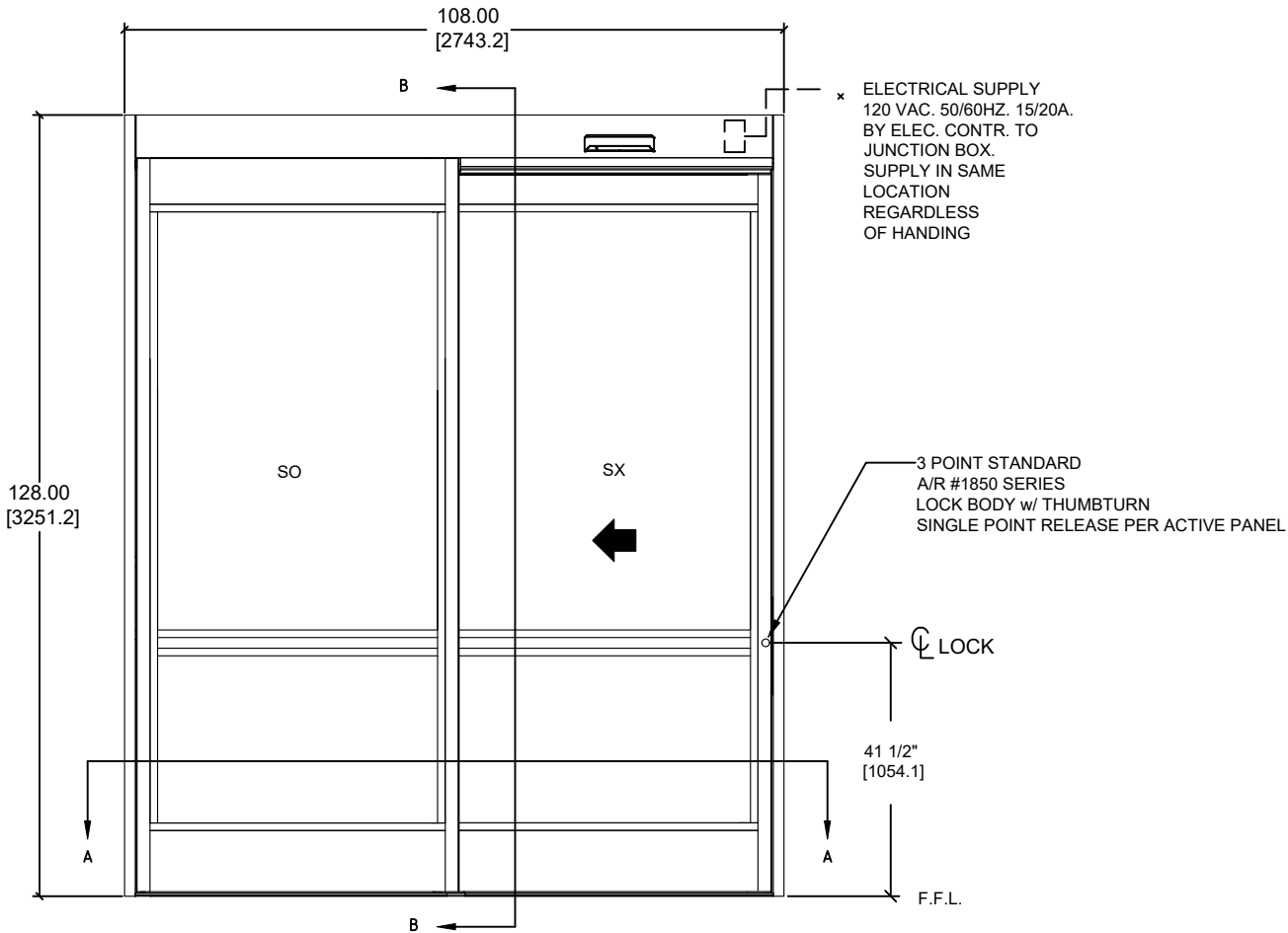


ASSA ABLOY

ASSA ABLOY ENTRANCE SYSTEMS
1900 AIRPORT ROAD
MONROE, NC 28110
PHONE: 1-866-237-2687
SPECDESK.NA.ENTRANCE@ASSAABLOY.COM

ASSA ABLOY SL500 Resilience R128

Overhead Concealed, Narrow Stile, Full Breakout, Single Slide,
Non-Impact



	OVERALL FRAME WIDTH (A)	ROUGH OPENING (B)	CLEAR OPENING (C)	DOOR WIDTH (D)	BREAKOUT WIDTH (E)
AT MAX WIDTH	108" [2743.2]	108 1/2" [2755.9]	46 1/8" [1171.6]	53 3/4" [1365.3]	98.00" [2490.0]
WIDTH FORMULA	B - 1/2" B - [12.7]	A + 1/2" A + [12.7]	A/2 - 7 7/8" A/2 - [200.0]	A/2 + 3/4" A/2 + [19.1]	A - 10" A - [254.0]
AT MAX HEIGHT	128" [3251.2]	128 1/4" [3257.6]	118" [2997.2]		
HEIGHT FORMULA	B - 1/4" B - [6.35]	A + 1/4" A + [6.35]	A - 10" A - [254.0]		

TWO-PANE GLASS FORMULA (STANDARD)
TOP LITE: OFW /2 - 5 5/8" [142.9] X OFH -58 7/8 [1,495.42]
BOTTOM LITE: OFW /2 - 5 5/8" [142.9] X 29 1/2 [749.3]

- NOTES:
- STANDARD PACKAGE CONSISTS OF:
- STANDARD FINISH:
 - CLASS 1, .018MM, CLEAR- AA-M12C22A41
 - CLASS 1, .018MM, DARK BRONZE- AA-M12C22A44
 - AUTOMATIC OPERATOR
 - NARROW STILE RAILS
 - LOWER MUNTINS, SEE SHEET AA-44 FOR DETAILS
 - THRESHOLD
 - 3-POINT LOCK WITH LOCK INDICATOR
 - 9/16" GLASS STOPS AND BLOCKS
 - 1/4" HS - .090" DUPONT SENTRYGLAS PLUS® - 1/4" HS
 - DRY GLAZED
 - MOTION/PRESENCE SENSORS
 - 5-POSITION KNOB SWITCH
 - BALL CATCH
 - DUAL CONCEALED SWEEPS IN SX & SO PANELS
 - 10" BOTTOM RAILS, SEE SHEET AA-44 FOR DETAILS

- OPTIONS AVAILABLE:
- SPECIAL FINISHES
 - THRESHOLD LEAD-UP SEE SHEET AA-30 FOR DETAILS
 - UPPER MUNTINS, SEE SHEET AA-44 FOR DETAILS
 - SEE SHEET OS-10 FOR ALL OTHER OPTIONS

FOR MAXIMUM CURRENT DRAW, SEE PRODUCT SPECIFICATION,
INSTALLATION INSTRUCTIONS, OR THE UL LABEL ON THE EQUIPMENT.

TEST PROTOCOLS: TAS 201, TAS 202 & TAS 203
FLORIDA PRODUCT APPROVAL # 30356
MIAMI-DADE NOA #21-0324.13

REFER TO RELEVANT [LOCAL, STATE, NATIONAL, OR AHJ] BUILDING CODE
FOR MIN DOOR HEIGHT & MIN/MAX WIDTH ALLOWABLE FOR EGRESS
REQUIREMENT IN CONJUNCTION WITH TABLE.

DIMENSIONS ARE IN INCHES [mm]

DESIGN PRESSURE RATING	
WHERE WATER INFILTRATION REQUIREMENT IS NEEDED	WHERE WATER INFILTRATION REQUIREMENT IS NOT NEEDED
NOT APPROVED	+/- 48.9 PSF*

*PSF RATINGS RANGE FROM 48.9-114.8 PSF DEPENDENT ON
PACKAGE WIDTH & HEIGHT. FOR SPECIFIC RATINGS CONSULT
PRODUCT APPROVALS OR PSF/SIZE CALCULATOR ON PRODUCT
WEBPAGE.

DWG NO. 1019927					
DRN BY	CAP	DATE	03/30/20	CHK BY	SF
		DATE	5/13/20	REV.	5.0
				DATE	1/21/22
<div>ASSA ABLOY</div>					