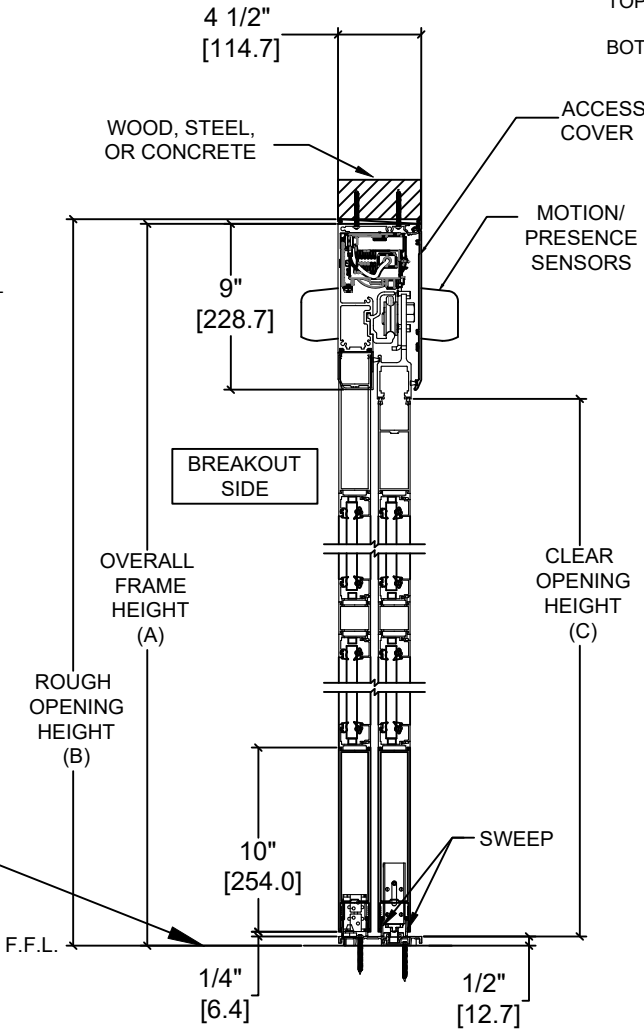


Overhead Concealed, Medium Stile, Full Breakout, Single Slide, Non-Impact

	OVERALL FRAME WIDTH (A)	ROUGH OPENING (B)	CLEAR OPENING (C)	DOOR WIDTH (D)	BREAKOUT WIDTH (E)
AT MAX WIDTH	108" [2743.2]	108 1/2" [2755.9]	43 3/8" [1101.7]	54 3/4" [1390.7]	98.00" [2490.0]
WIDTH FORMULA	B - 1/2" B - [12.7]	A + 1/2" A + [12.7]	A/2 - 10 5/8" A/2 - [269.9]	A/2 + 3/4" A/2 + [19.1]	A - 10" A - [254.0]
AT MAX HEIGHT	128" [3251.2]	128 1/4" [3257.6]	118" [2997.2]		
HEIGHT FORMULA	B - 1/4" B - [6.35]	A + 1/4" A + [6.35]	A - 10" A - [254.0]		

TWO-PANE GLASS FORMULA (STANDARD)  
TOP LITE: OFW /2 - 8 3/8" [212.7] X OFH - 58 7/8 [1,495.43]  
BOTTOM LITE: OFW /2 - 8 3/8" [231.5] X 29 1/2 [749.3]



**NOTES:**  
STANDARD PACKAGE CONSISTS OF:

- STANDARD FINISH:
  - CLASS 1, .018MM, CLEAR- AA-M12C22A41
  - CLASS 1, .018MM, DARK BRONZE- AA-M12C22A44
- AUTOMATIC OPERATOR
- MEDIUM STILE RAILS
- LOWER MUNTINS, SEE SHEET AA-44 FOR DETAILS
- THRESHOLD
- 3-POINT LOCK WITH LOCK INDICATOR
- 1/4" [6mm] TEMPERED GLASS
- DRY GLAZED
- MOTION/PRESENCE SENSORS
- 5-POSITION KNOB SWITCH
- BALL CATCH
- DUAL CONCEALED SWEEPS IN SX & SO PANELS
- 10" BOTTOM RAILS, SEE SHEET AA-44 FOR DETAILS

OPTIONS AVAILABLE:

- SPECIAL FINISHES
- THRESHOLD LEAD-UP SEE SHEET AA-30 FOR DETAILS
- UPPER MUNTINS, SEE SHEET AA-44 FOR DETAILS
- SEE SHEET OS-10 FOR ALL OTHER OPTIONS

FOR MAXIMUM CURRENT DRAW, SEE PRODUCT SPECIFICATION,  
INSTALLATION INSTRUCTIONS, OR THE UL LABEL ON THE EQUIPMENT.

TEST PROTOCOLS: TAS 201, TAS 202 & TAS 203  
FLORIDA PRODUCT APPROVAL # 30356  
MIAMI-DADE NOA #21-0324.13

REFER TO RELEVANT [LOCAL, STATE, NATIONAL, OR AHJ] BUILDING CODE FOR MIN DOOR HEIGHT & MIN/MAX WIDTH ALLOWABLE FOR EGRESS REQUIREMENT IN CONJUNCTION WITH TABLE.

DIMENSIONS ARE IN INCHES [mm]

DWG NO. 1019928					
DRN BY	CAP	DATE	03/30/20	CHK BY	SF
				DATE	5/13/20
				REV.	5.0
				DATE	1/21/22


# ASSA ABLOY

---

---

---

---

DESIGN PRESSURE RATING	
WHERE WATER INFILTRATION REQUIREMENT IS NEEDED	WHERE WATER INFILTRATION REQUIREMENT IS NOT NEEDED
NOT APPROVED	+/- 70 PSF*

\*PSF RATINGS RANGE FROM 70-116.3 PSF DEPENDENT ON PACKAGE WIDTH & HEIGHT. FOR SPECIFIC RATINGS CONSULT PRODUCT APPROVALS OR PSF/SIZE CALCULATOR ON PRODUCT WEBSITE.

