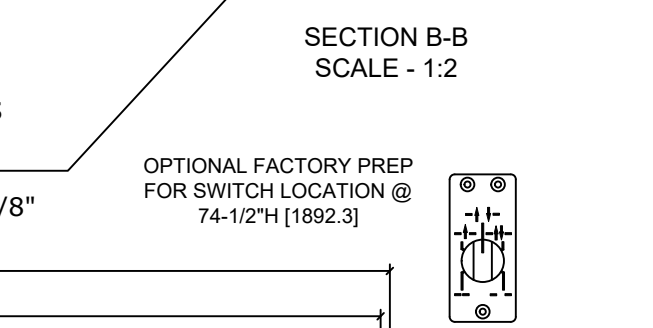
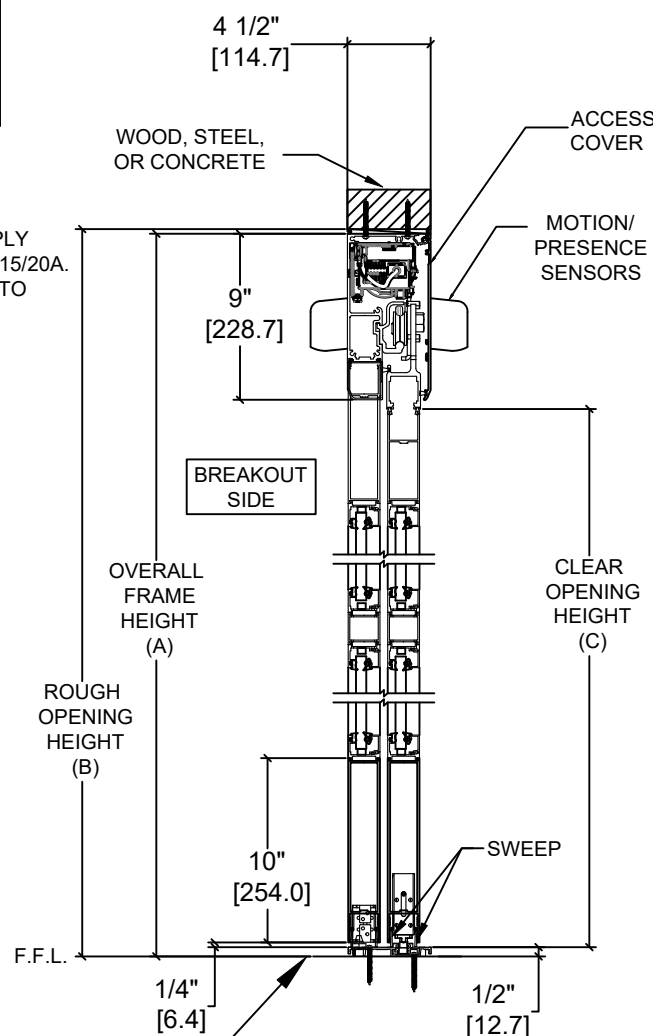
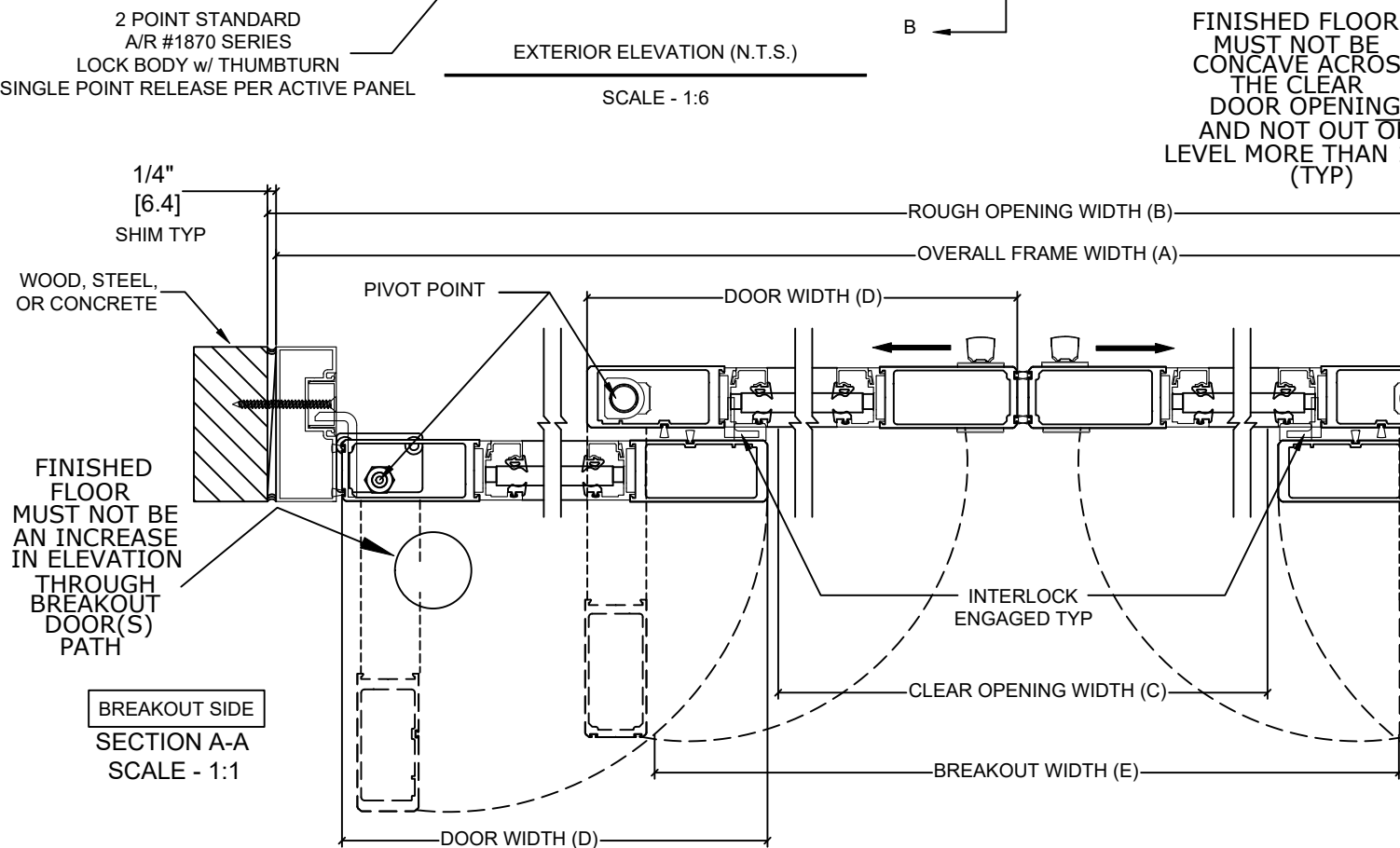
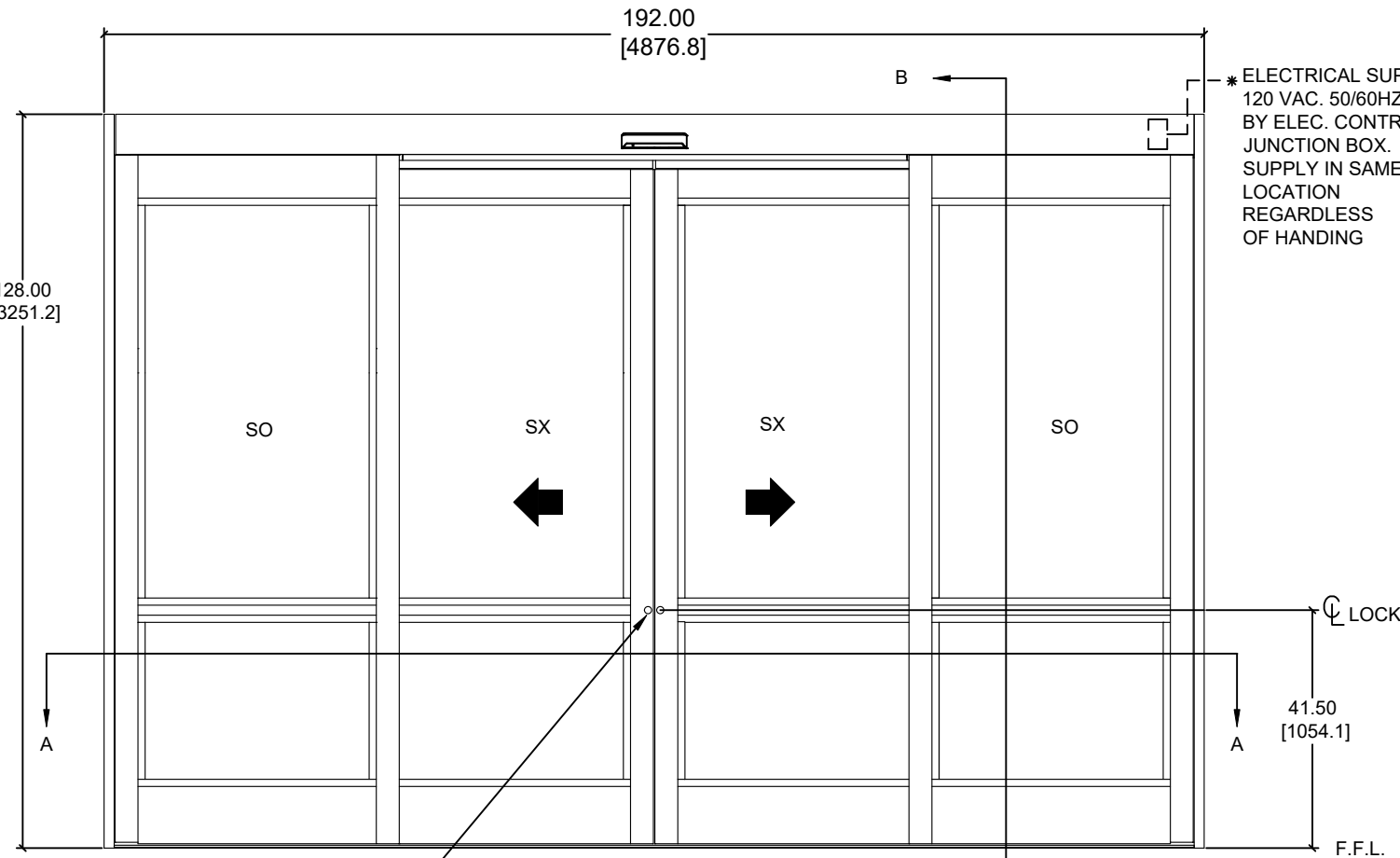


ASSA ABLOY

ASSA ABLOY ENTRANCE SYSTEMS
1900 AIRPORT ROAD
MONROE, NC 28110
PHONE: 1-866-237-2687
SPECDESK.NA.ENTRANCE@ASSAABLOY.COM

ASSA ABLOY SL500 Resilience R128

Overhead Concealed, Medium Stile, Full Breakout, Bi-Part,
Large & Small Missile Impact - Level D



	OVERALL FRAME WIDTH (A)	ROUGH OPENING (B)	CLEAR OPENING (C)	DOOR WIDTH (D)	BREAKOUT WIDTH (E)
AT MAX WIDTH	192" [4876.8]	192 1/2" [4889.5]	76 1/2" [1943.1]	49 5/8" [1260.5]	175 9/16" [4459.3]
WIDTH FORMULA	B - 1/2" B - [12.7]	A + 1/2" A + [12.7]	A/2 - 19 1/2" A/2 - [495.3]	A/4 + 1 5/8" A/4 + [41.3]	A - 16 7/16" A - [417.5]
AT MAX HEIGHT	128" [3251.2]	128 1/4" [3257.6]	118" [2997.2]		
HEIGHT FORMULA	B - 1/4" B - [6.35]	A + 1/4" A + [6.35]	A - 10" A - [254.0]		

TWO-PANE GLASS FORMULA (STANDARD)
TOP LITE: OFW /4 - 7 1/2" [190.5] X OFH -55 3/4 [1,416.05]
BOTTOM LITE: OFW /4 - 7 1/2" [190.5] X 29 1/2 [749.3]

- NOTES:**
- STANDARD PACKAGE CONSISTS OF:
- STANDARD FINISH:
 - CLASS 1, .018MM, CLEAR- AA-M12C22A41
 - CLASS 1, .018MM, DARK BRONZE- AA-M12C22A44
 - AUTOMATIC OPERATOR
 - MEDIUM STILE RAILS
 - LOWER MUNTINS, SEE SHEET AA-44 FOR DETAILS
 - THRESHOLD
 - 2-POINT LOCK WITH LOCK INDICATOR
 - 9/16" GLASS STOPS AND BLOCKS
 - 1/4" HS - .090" DUPONT SENTRYGLAS PLUS® - 1/4" HS
 - DRY GLAZE
 - MOTION/PRESENCE SENSORS
 - 5-POSITION KNOB SWITCH
 - BALL CATCH
 - DUAL CONCEALED SWEEPS IN SX & SO PANELS
 - 10" BOTTOM RAILS, SEE SHEET AA-44 FOR DETAILS
- OPTIONS AVAILABLE:
- SPECIAL FINISHES
 - THRESHOLD LEAD-UP SEE SHEET AA-30 FOR DETAILS
 - UPPER MUNTINS, SEE SHEET AA-44 FOR DETAILS
 - SEE SHEET OS-10 FOR ALL OTHER OPTIONS

FOR MAXIMUM CURRENT DRAW, SEE PRODUCT SPECIFICATION,
INSTALLATION INSTRUCTIONS, OR THE UL LABEL ON THE EQUIPMENT.

TEST PROTOCOLS: TAS 201, TAS 202 & TAS 203
FLORIDA PRODUCT APPROVAL # 30356
MIAMI-DADE NOA #21-0324.12

REFER TO RELEVANT [LOCAL, STATE, NATIONAL, OR AHJ] BUILDING CODE FOR
MIN DOOR HEIGHT & MIN/MAX WIDTH ALLOWABLE FOR EGRESS
REQUIREMENT IN CONJUNCTION WITH TABLE.

DESIGN PRESSURE RATING	
WHERE WATER INFILTRATION REQUIREMENT IS NEEDED	WHERE WATER INFILTRATION REQUIREMENT IS NOT NEEDED
NOT APPROVED	+/- 60 PSF*

*PSF RATINGS RANGE FROM 60-99.5 PSF DEPENDENT ON PACKAGE
WIDTH & HEIGHT. FOR SPECIFIC RATINGS CONSULT PRODUCT
APPROVALS OR PSF/SIZE CALCULATOR ON PRODUCT WEBPAGE.

DWG NO. 1019930					
DRN BY	CAP	DATE	03/30/20	CHK BY	SF
		DATE	5/13/20	REV.	5.0
		DATE	1/21/22		
<div>ASSA ABLOY</div>					

DIMENSIONS ARE IN INCHES [mm]