

| DESIGN PRESSURE RATING                         |  |
|--|--|
| WHERE WATER INFILTRATION REQUIREMENT IS NEEDED | WHERE WATER INFILTRATION REQUIREMENT IS NOT NEEDED |
| NOT APPROVED                                   | +/- 80 PSF*  |

\*PSF RATINGS RANGE FROM 70-129 PSF DEPENDENT ON PACKAGE WIDTH AND HEIGHT. FOR SPECIFIC RATINGS, CONSULT PRODUCT APPROVALS OR PSF/SIZE CALCULATOR ON THE PRODUCT WEBPAGE.

| SL500<br>EXR-SW | OVERALL<br>FRAME<br>WIDTH<br>(A) | CLEAR DOOR<br>OPENING<br>WIDTH<br>(B) | DOOR<br>WIDTH<br>(C)       | ROUGH<br>OPENING<br>WIDTH<br>(D) | HALF DOOR<br>WIDTH<br>(E)    | MAX,<br>HALF-DOOR<br>HEIGHT<br>(F) |
|-----------------|----------------------------------|---------------------------------------|----------------------------|----------------------------------|------------------------------|------------------------------------|
| 8"              | 96"<br>[2438.4]                  | 29 1/2"<br>[749.3]                    | 24 3/4"<br>[628.7]         | 96 1/2"<br>[2451.1]              | 20 1/2"<br>[520.7]           | 44"<br>[1117.6]                    |
| KEY:            | D-1/2"<br>D-[12.7]               | A/2 - 18.5"<br>A/2 - [469.9]          | [A/4]+3/4"<br>[A/4]+[19.1] | A+1/2"<br>A+[12.7]               | [A/4]-3 1/2"<br>[A/4]-[88.9] | N/A                                |

CONSULT FACTORY FOR ALL CUSTOM CONFIGURATION SIZES.  
**CONFIGURATIONS OTHER THAN 8' WILL REQUIRE ADDITIONAL LEAD TIME.**

DIMENSIONS FOR 1/4" [6.3] GLASS:

|                                 |                        |   |                    |
|---------------------------------|------------------------|---|--------------------|
| <u>BASE PACKAGE: QTY 4 EACH</u> |                        |   |                    |
| UPPER                           | OFH-(G+16.51" [419.2]) | X | (A/4)-4.88"[123.9] |
| LOWER                           | F-15.12" [383.9]       | X | (A/4)-4.88"[123.9] |
| <u>HALF-DOOR: QTY 2 EACH</u>    |                        |   |                    |
| LOWER                           | F-14.5 [368.3]         | X | E- 4.750" [120.7]  |

NOTES:

STANDARD PACKAGE CONSISTS OF:

- STANDARD FINISHES:
  - CLASS 1, .018MM, CLEAR- AA-M12C22A41
  - CLASS 1, .018MM, DARK BRONZE- AA-M12C22A44
- SL500 EXR-SW PANELS CONSISTS OF NARROW STILE RAILS
- 10" BOTTOM RAILS AND 4" MUNTINS
- SL500R BASE PANELS: 1/4" STOPS & BLOCKS
- SL500 EX HALF-DOOR PANELS: 1/4" SLOPED GLASS STOPS & BLOCKS
- FULL THRESHOLD W/ LEAD-UPS
- NON-BREAKOUT PANELS AND GUIDES
- FAIL SAFE ELECTRIC LOCK, SEE SHEET AA-81
- PRESENCE SENSORS WITH HEADER MOUNTED WAVE ACTIVATION SENSORS
- SL500R BASE PACKAGE CONSISTS OF FOUR-POINT LOCK w/ INDICATOR
- 3-POSITION MODE SELECTOR: HOLD OPEN, ON, OFF
- DUAL CONCEALED SWEEPS IN ACTIVE LEAF PANELS
- EX PANELS USE MECHANICAL HOLD-OPENS
- EX PANELS SWING OPEN MANUALLY
- EX PANELS USE FLUSH BOLTS
- EX PANELS USE CONCEALED BOTTOM DOOR SWEEPS
- SECURITY SWITCHES, SEE SHEET AA-85
- DOOR POSITION SWITCH, SEE SHEET AA-82

OPTIONS AVAILABLE:

- SPECIAL FINISHES (WET & POWDER COAT)
- 9/16" IMPACT RATED GLASS
- EX SENSORS, SEE SHEET AA-182
- PUSH PLATES, SEE SHEET AA-185
- WAVE PLATES, SEE SHEET AA-184
- WIRELESS TRANSMITTERS/ RECEIVERS, SEE SHEET AA-186
- EX DOOR LOCKING, SEE SHEET 11-181
- SEE SHEET OS-7 FOR ALL OTHER OPTIONS

COMPLIES WITH ANSI/BHMA A156.38 STANDARD FOR LOW ENERGY POWER OPERATED SLIDING AND FOLDING DOORS.

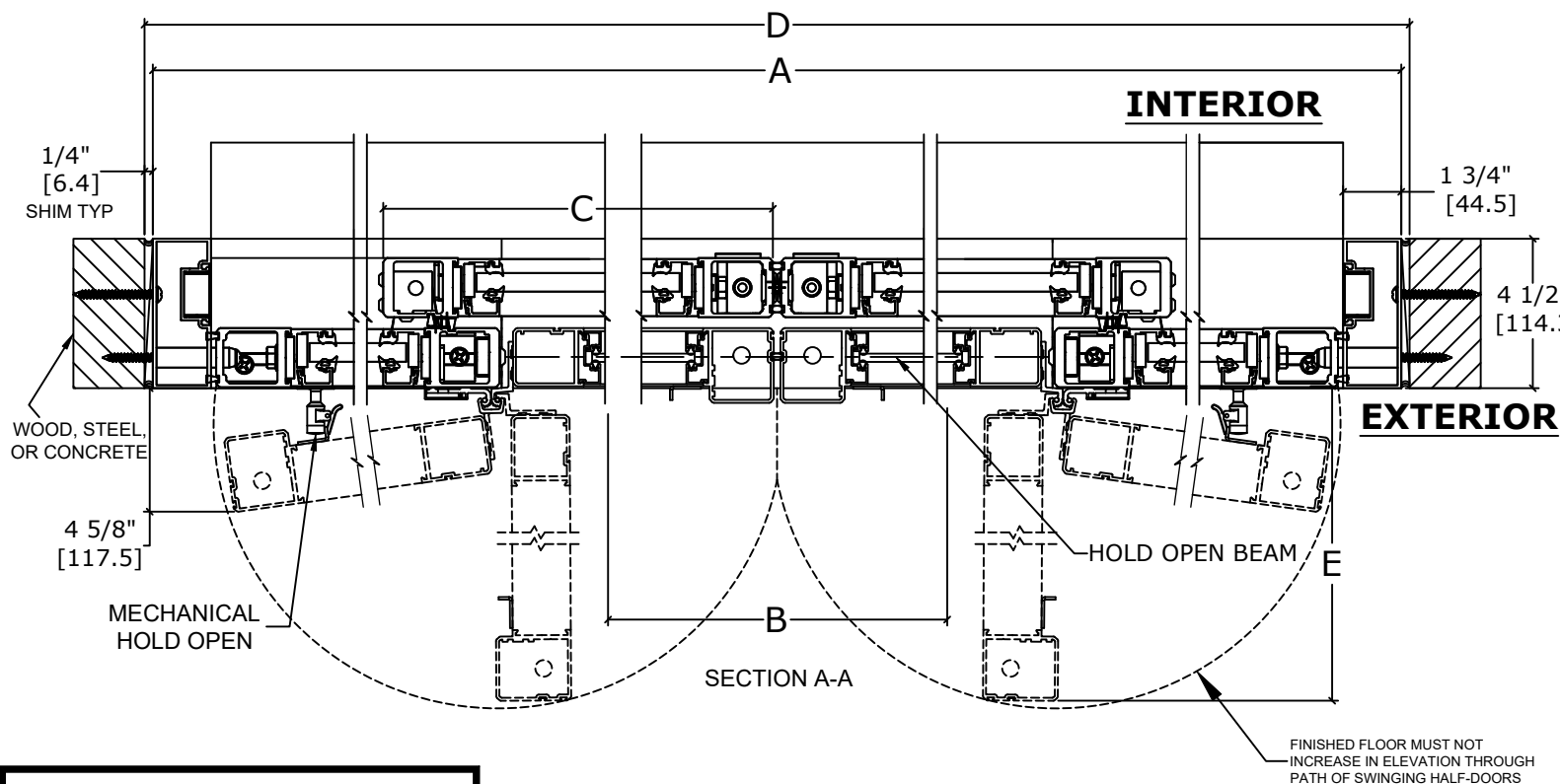
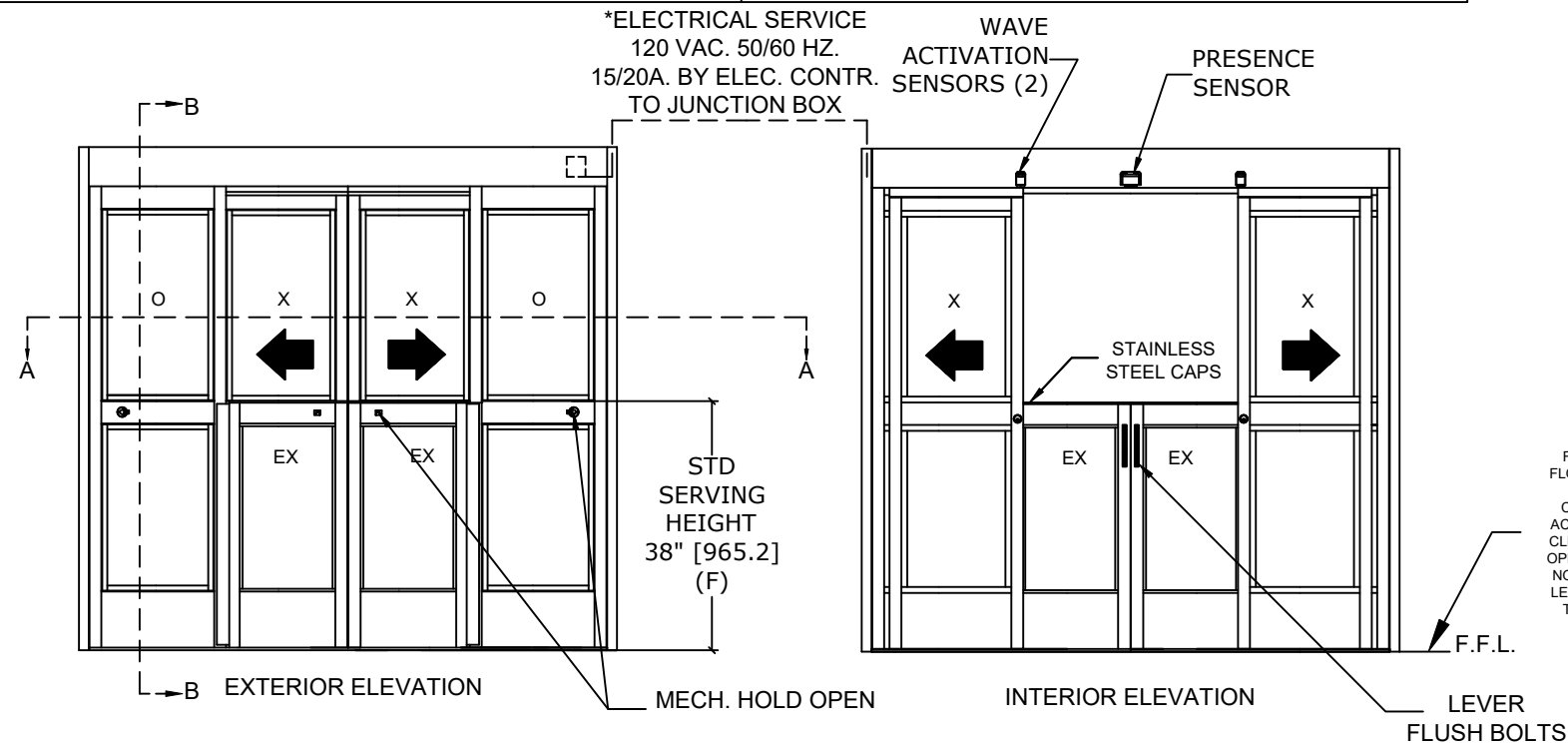
FOR MAXIMUM CURRENT DRAW, SEE PRODUCT SPECIFICATION,  
INSTALLATION INSTRUCTIONS, OR THE UL LABEL ON THE EQUIPMENT.

TEST PROTOCOLS: TAS 201, TAS 202 & TAS 203  
 • FLORIDA PRODUCT APPROVAL # 30356

DIMENSIONS ARE IN INCHES [mm]

|                 |     |      |         |        |     |            |
|-----------------|-----|------|---------|--------|-----|------------|
| DWG NO. 1023669 |     |      |         |        |     |            |
| DRN BY          | CAP | DATE | 1/12/23 | CHK BY | CBG | DATE       |
|                 |     |      |         |        |     | 9/27/23    |
|                 |     |      |         |        |     | REV. 1.0   |
|                 |     |      |         |        |     | DATE XXXXX |

# ASSA ABLOY



THIS PRODUCT IS COVERED BY US PATENT  
NO(S). US11,448,003 AND US11,713,616.

**WARNINGS: NOT FOR PUBLIC USE, TRAINED TRAFFIC ONLY.  
NOT FOR USE AS AN ACCESSIBLE MEANS OF EGRESS.**

REFER TO RELEVANT [LOCAL, STATE, NATIONAL, OR AHJ] BUILDING CODE FOR MIN DOOR HEIGHT & MIN/MAX WIDTH ALLOWABLE FOR EGRESS REQUIREMENT IN CONJUNCTION WITH TABLE.

