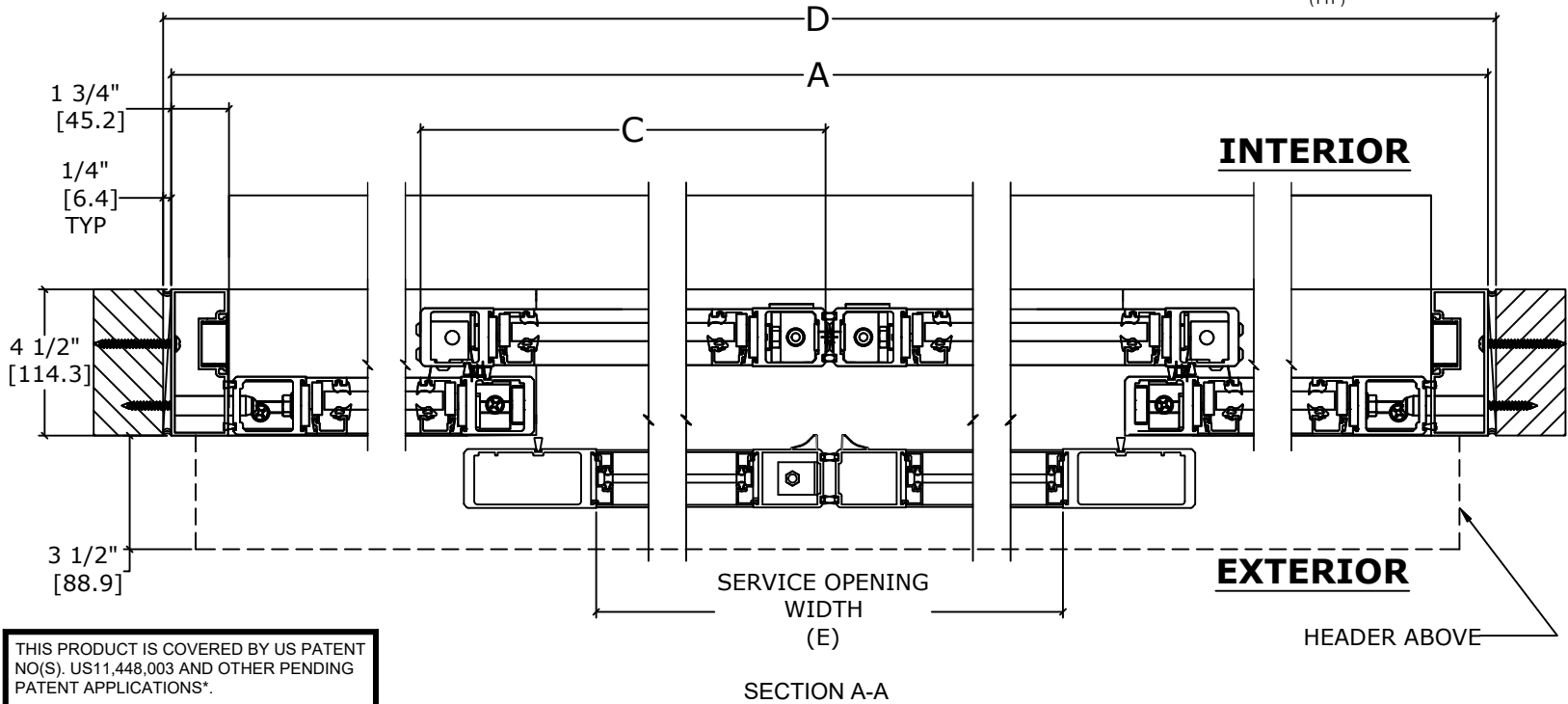
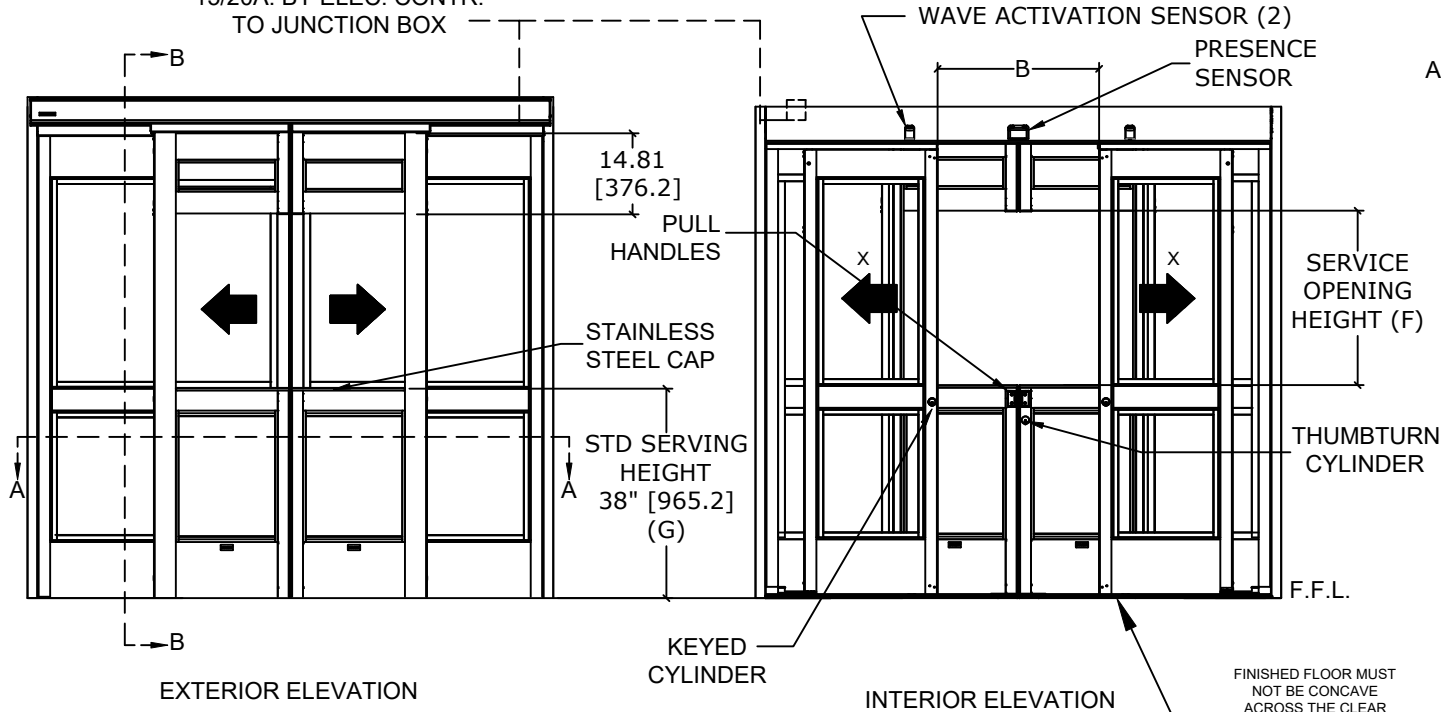


ASSA ABLOY

ASSA ABLOY ENTRANCE SYSTEMS
1900 AIRPORT ROAD
MONROE, NC 28110
PHONE: 1-866-237-2687
SPECDESK.NA.ENTRANCE@ASSAABLOY.COM

ASSA ABLOY SL500 EXR-SL
OVERHEAD CONCEALED
NARROW STILE BI-PART DOOR SYSTEM

*ELECTRICAL SERVICE
120 VAC. 50/60 HZ.
15/20A. BY ELEC. CONTR.
TO JUNCTION BOX



THIS PRODUCT IS COVERED BY US PATENT NO(S). US11,448,003 AND OTHER PENDING PATENT APPLICATIONS*.
*US PATENT APP. NO.17/955,799

WARNINGS: NOT FOR PUBLIC USE, TRAINED TRAFFIC ONLY.
NOT FOR USE AS AN ACCESSIBLE MEANS OF EGRESS.
REFER TO RELEVANT [LOCAL, STATE, NATIONAL, OR AHJ] BUILDING CODE FOR MIN DOOR HEIGHT & MIN/MAX WIDTH ALLOWABLE FOR EGRESS REQUIREMENT IN CONJUNCTION WITH TABLE.

SL500 EXR-SL	OVERALL FRAME WIDTH (A)	CLEAR DOOR OPENING WIDTH (B)	DOOR WIDTH (C)	ROUGH OPENING WIDTH (D)	SERVICE OPENING WIDTH (E)	SERVICE OPENING HEIGHT (F)
8'	96" [2438.4]	29 1/2" [749.3]	24 3/4" [628.7]	96 1/2" [2451.1]	41 7/8" [1062.9]	32 3/4" [831.9]
KEY:	D-1/2" D-[12.7]	A/2 - 17 7/8" A/2 - [454]	[A/4]+3/4" [A/4]+[19.1]	A+1/2" A+[12.7]	(A/2)-6 1/8" (A/2)-[156.4]	OFH-(G+21 1/4") OFH-(G+[539.8])

CONSULT FACTORY FOR ALL CUSTOM CONFIGURATION SIZES.
CONFIGURATIONS OTHER THAN 8' WILL REQUIRE ADDITIONAL LEAD TIME.
DIMENSIONS FOR 1/4" [6.3] GLASS:

BASE PACKAGE: QTY 4 EACH			
UPPER LOWER	OFH-(G+16.51" [419.2]) G-15.12" [383.9]	X X	(A/4)-4.88" [123.9] (A/4)-4.88" [123.9]
C-DOOR: QTY 2 EACH			
UPPER LOWER	5.313" [134.9] G-14.5 [368.3]	X X	C- 6.625" [168.3] C- 6.625" [168.3]

- NOTES:**
STANDARD PACKAGE CONSISTS OF:
- STANDARD FINISHES:
 - CLASS 1, .018MM, CLEAR- AA-M12C22A41
 - CLASS 1, .018MM, DARK BRONZE- AA-M12C22A44
 - SL500 EXR-SL BASE PANELS CONSISTS OF NARROW STILE RAILS
 - 10" BOTTOM RAILS AND 4" MUNTINS
 - SL500R BASE PANELS: 1/4" STOPS & BLOCKS
 - SL500 EX C-DOOR PANELS: 1/4" SLOPED GLAS STOPS & BLOCKS
 - FULL THRESHOLD W/ LEAD-UPS
 - NON-BREAKOUT PANELS AND GUIDES
 - FAIL SAFE ELECTRIC LOCK, SEE SHEET AA-81
 - PRESENCE SENSORS WITH HEADER MOUNTED WAVE ACTIVATION SENSORS
 - SL500R BASE PACKAGE CONSISTS OF FOUR-POINT LOCK w/ INDICATOR
 - 3-POSITION MODE SELECTOR: HOLD OPEN, ON, OFF
 - DUAL CONCEALED SWEEPS IN ACTIVE LEAF PANELS
 - EX PANELS ARE SELF-OPENING AND TIMED BY BELT FOR CONVENIENCE
 - EX PANELS USE THUMBTURN TWO POINT LOCK
 - EX PANELS CONSIST OF NARROW STILE NOSE RAIL AND MEDIUM STILE HEEL RAIL
 - SECURITY SWITCHES, SEE SHEET AA-85
 - DOOR POSITION SWITCH, SEE SHEET AA-82

- OPTIONS AVAILABLE:
- SPECIAL FINISHES (WET & POWDER COAT)
 - 9/16" IMPACT RATED GLASS
 - EX SENSORS, SEE SHEET AA-182
 - PUSH PLATES, SEE SHEET AA-185
 - WAVE PLATES, SEE SHEET AA-184
 - WIRELESS TRANSMITTERS/ RECEIVERS, SEE SHEET AA-186
 - SEE SHEET OS-7 FOR ALL OTHER OPTIONS

COMPLIES WITH ANSI/BHMA A156.38 STANDARD FOR LOW ENERGY POWER OPERATED SLIDING AND FOLDING DOORS.

FOR MAXIMUM CURRENT DRAW, SEE PRODUCT SPECIFICATION, INSTALLATION INSTRUCTIONS, OR THE UL LABEL ON THE EQUIPMENT.

TEST PROTOCOLS: TAS 201, TAS 202 & TAS 203
FLORIDA PRODUCT APPROVAL # 30356

DIMENSIONS ARE IN INCHES [mm]

DESIGN PRESSURE RATING	
WHERE WATER INFILTRATION REQUIREMENT IS NEEDED	WHERE WATER INFILTRATION REQUIREMENT IS NOT NEEDED
NOT APPROVED	+/- 80 PSF*

*PSF RATINGS RANGE FROM 70-129 PSF DEPENDENT ON PACKAGE WIDTH AND HEIGHT. FOR SPECIFIC RATINGS, CONSULT PRODUCT APPROVALS OR PSF/SIZE CALCULATOR ON THE PRODUCT WEBPAGE.

DWG NO. 1023670

DRN BY	CAP	DATE	1/9/2023	CHK BY	CBG	DATE	9/27/23	REV.	1.0	DATE	9/27/23
--------	-----	------	----------	--------	-----	------	---------	------	-----	------	---------

ASSA ABLOY