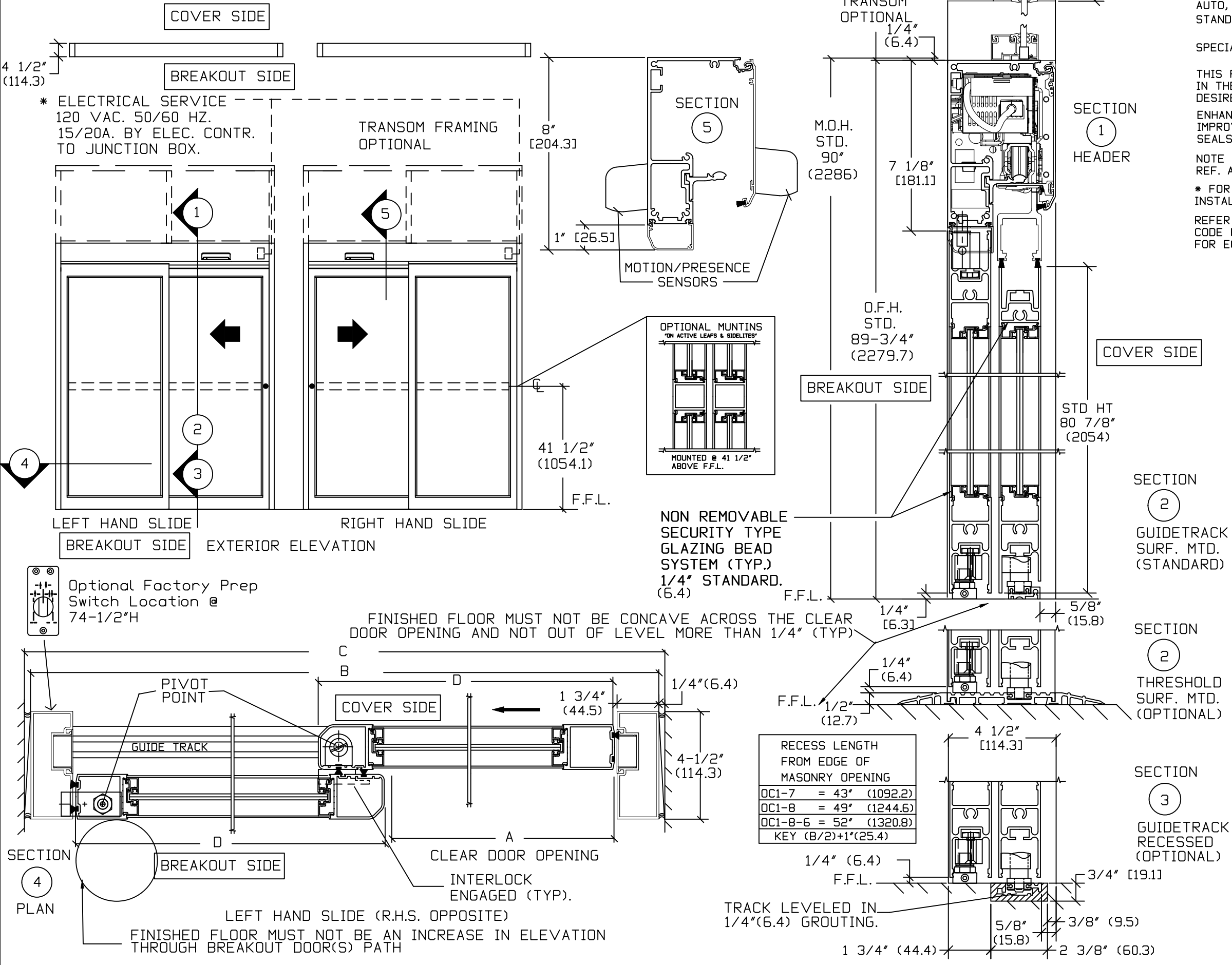


ASSA ABLOY SL500

OVERHEAD CONCEALED FULL BREAKOUT
NARROW STILE SINGLE SLIDE DOOR SYSTEM



NOTE: THE STANDARD PACKAGE CONSISTS OF:
THE AUTOMATIC OPERATOR & WEATHERSTRIP. FRAMES. DOORS & SIDELITES WITH VERTICAL WEATHERSTRIP, EMERGENCY BREAKAWAY & 1-POINT LOCK. OPTIONAL POSITION SWITCHES (DIGITAL (3 OR 5) OR KEY (5)), (OFF-EXIT ONLY-AUTO-REDUCED OPENING-HOLD OPEN, OR OFF, AUTO, HOLD OPEN), MOTION/PRESENCE SENSORS, OPTIONAL 6" JAMBS.
STANDARD FINISH: CLEAR- AA-M12C22A41, CLASS 1, .018 MM.
DARK BRONZE- AA-M12C22A44, CLASS 1, .018 MM
SPECIAL FINISHES ARE AVAILABLE.

THIS PACKAGE WILL ACCEPT UP TO 1"(25.4) INSULATED GLASS IN THE SIDELITES AND ACTIVE LEAVES. PLEASE INDICATE IF SO DESIRED.

ENHANCE YOUR BESAM SL500 PACKAGE WITH ECODOOR OPTIONS TO IMPROVE AIR INFILTRATION PERFORMANCE. CHOOSE FROM: ECODOOR SEALS, MAGNETIC CATCHES, HYDRAULIC CLOSERS, INSULATED GLASS.

NOTE DRAWING IS DIMENSIONED IN BOTH ENGLISH AND METRIC REF. AS FOLLOWS 1" (25.4) ALL METRIC SIZES ARE MILLIMETERS.

* FOR MAXIMUM CURRENT DRAW PER OPERATOR, SEE PRODUCT SPECIFICATION, INSTALLATION INSTRUCTIONS, OR THE UL LABEL ON THE EQUIPMENT.

REFER TO RELEVANT (LOCAL, STATE, NATIONAL OR AHJ) BUILDING CODE FOR MIN DOOR HEIGHT & MIN/MAX WIDTH ALLOWABLE FOR EGRESS REQUIREMENT IN CONJUNCTION WITH TABLE BELOW.

SL500 OHC	DOOR OPENING A	OVERALL FRAME WIDTH B	MASONRY OPENING WIDTH C	ACTIVE & SIDELITE LEAF WIDTH D
OC1-7	35 1/4" (895.4)	84" (2133.6)	84 1/2" (2146.3)	41 1/2" (1054.1)
OC1-8	41 1/4" (1047.8)	96" (2438.4)	96 1/2" (2451.1)	47 1/2" (1206.5)
OC1-8-6	44 1/4" (1124)	102" (2590.8)	102 1/2" (2603.5)	50 1/2" (1282.7)
OC1-9	47 1/4" (1200.2)	108" (2743.2)	108 1/2" (2755.9)	53 1/2" (1358.9)
KEY	(B/2)-5 3/4" (B/2)-(171.5)	(C-1/2") (C-12.7)	(B+1/2") (B+12.7)	(B/2)-1/2" (B/2)-(12.7)

STANDARD GLASS SIZES ARE AS FOLLOWS;

SL500 OHC		1/4"(6.4)	5/8"(15.9) AND 1"(25.4)
OC1-7	W	36 5/8"(930.3)	36 3/8"(923.9)
	H	73 7/8" (1876.4)	73 3/8" (1863.7)
OC1-8	W	42 5/8"(1082.7)	42 3/8"(1076.3)
	H	73 7/8" (1876.4)	73 3/8" (1863.7)
OC1-8-6	W	45 5/8"(1158.9)	45 3/8"(1152.5)
	H	73 7/8" (1876.4)	73 3/8" (1863.7)
OC1-9	W	48 5/8"(1235.1)	48 3/8"(1228.7)
	H	73 7/8" (1876.4)	73 3/8" (1863.7)
KEY	WIDTH	(B/2)-5 3/8" (B/2)-(136.5)	(B/2)-5 5/8" (B/2)-(142.9)
	HEIGHT	(OFH)-15 7/8" (OFH)-(403.2)	(OFH)-16 3/8" (OFH)-(415.9)

