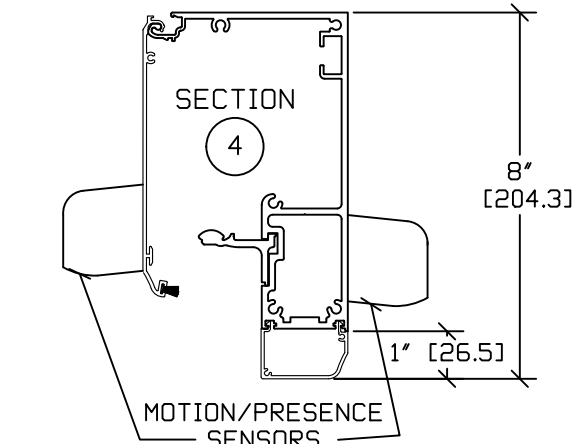
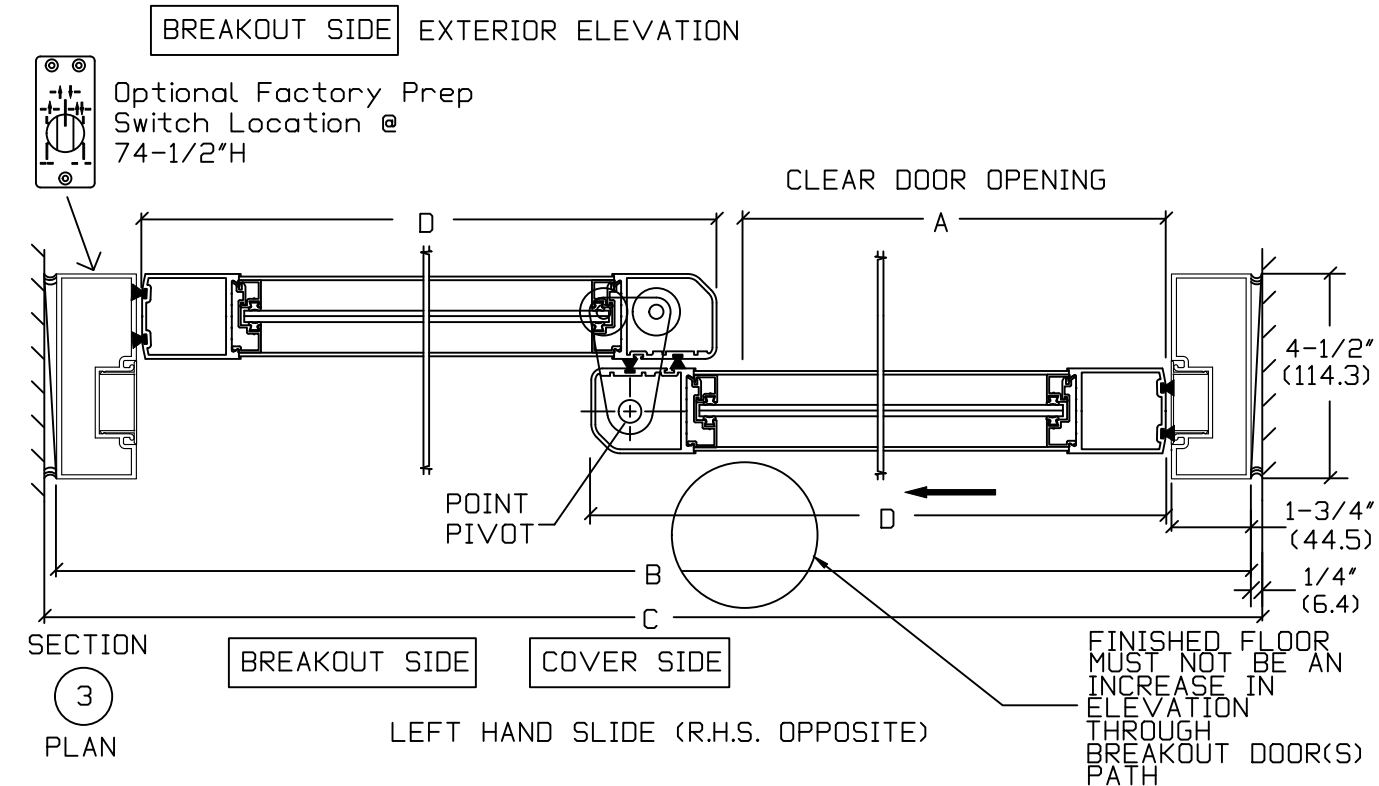
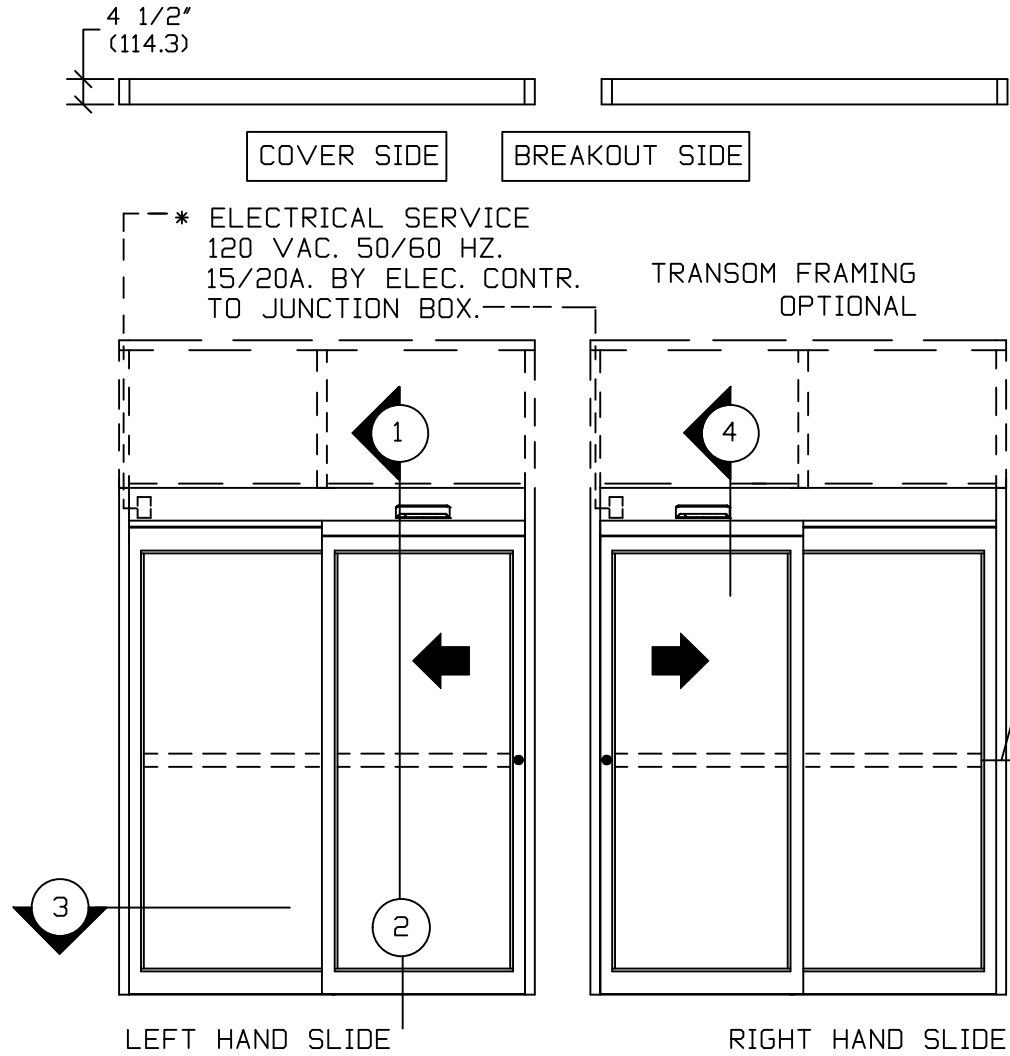
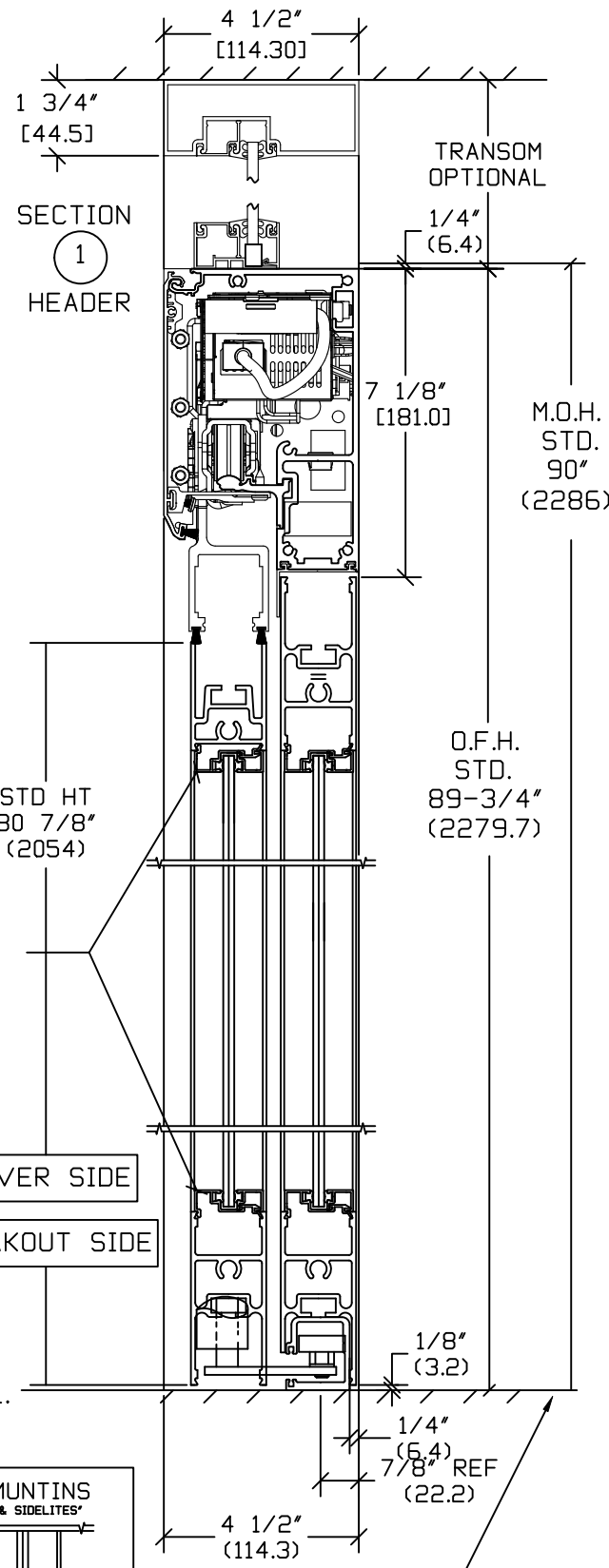
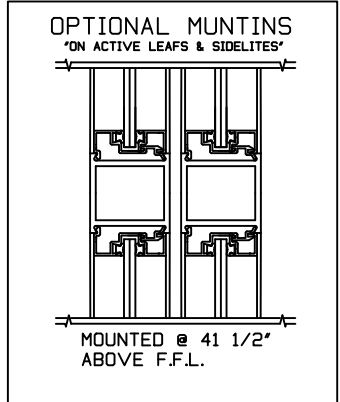
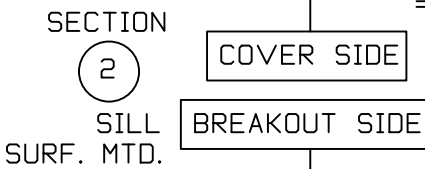


ASSA ABLOY SL500
OVERHEAD CONCEALED FIXED SIDELITE
NARROW STILE SINGLE SLIDE DOOR SYSTEM



NON REMOVABLE
SECURITY TYPE
GLAZING BEAD
SYSTEM (TYP.)
1/4" STANDARD.
(6.4)



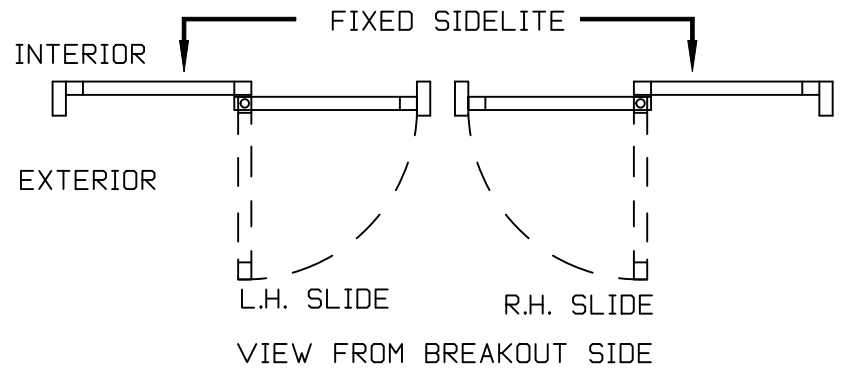
NOTE: THE STANDARD PACKAGE CONSISTS OF:
THE AUTOMATIC OPERATOR & WEATHERSTRIP. FRAMES, DOORS & SIDELITES WITH VERTICAL WEATHERSTRIP, EMERGENCY BREAKAWAY & 2-POINT LOCK. OPTIONAL POSITION SWITCHES (DIGITAL (3 OR 5) OR KEY (5)), (OFF-EXIT ONLY-AUTO-REDUCED OPENING-HOLD OPEN OR, OFF, AUTO, HOLD OPEN), MOTION/PRESENCE SENSORS, OPTIONAL 6" JAMBS.
STANDARD FINISH: CLEAR- AA-M12C22A41, CLASS 1, .018 MM.
DARK BRONZE- AA-M12C22A44, CLASS 1, .018 MM.
SPECIAL FINISHES ARE AVAILABLE.
THIS PACKAGE WILL ACCEPT UP TO 1" (25.4) INSULATED GLASS

NOTE DRAWING IS DIMENSIONED IN BOTH ENGLISH AND METRIC REF. AS FOLLOWS 1" (25.4) ALL METRIC SIZES ARE MILLIMETERS.
* FOR MAXIMUM CURRENT DRAW PER OPERATOR, SEE PRODUCT SPECIFICATION, INSTALLATION INSTRUCTIONS, OR THE UL LABEL ON THE EQUIPMENT.
REFER TO RELEVANT (LOCAL, STATE, NATIONAL OR AHJ) BUILDING CODE FOR MIN DOOR HEIGHT & MIN/MAX WIDTH ALLOWABLE FOR EGRESS REQUIREMENT IN CONJUNCTION WITH TABLE BELOW.

SL500 OHC	DOOR OPENING A	OVERALL FRAME WIDTH B	MASONRY OPENING WIDTH C	ACTIVE & SIDELITE LEAF WIDTH D
OC3-7	35 1/4" (895.4)	84" (2133.6)	84 1/2" (2146.3)	41 1/2" (1054.1)
OC3-8	41 1/4" (1047.8)	96" (2438.4)	96 1/2" (2451.1)	47 1/2" (1206.5)
OC3-8-6	44 1/4" (1124)	102" (2590.8)	102 1/2" (2603.5)	50 1/2" (1282.7)
OC3-9	47 1/4" (1200.2)	108" (2743.2)	108 1/2" (2755.9)	53 1/2" (1358.9)
KEY	(B/2)-6 3/4" (B/2)-(171.5)	(C-1/2") (C-12.7)	(B+1/2") (B+12.7)	(B/2)-1/2" (B/2)-(12.7)

STANDARD GLASS SIZES ARE AS FOLLOWS;

SL500 OHC		1/4" (6.4)	5/8" (15.9) AND 1" (25.4)
OC3-7	W	36 5/8" (930.3)	36 3/8" (923.9)
	H	73 7/8" (1876.4)	73 3/8" (1863.7)
OC3-8	W	42 5/8" (1082.7)	42 3/8" (1076.3)
	H	73 7/8" (1876.4)	73 3/8" (1863.7)
OC3-8-6	W	45 5/8" (1158.9)	45 3/8" (1152.5)
	H	73 7/8" (1876.4)	73 3/8" (1863.7)
OC3-9	W	48 5/8" (1235.1)	48 3/8" (1228.7)
	H	73 7/8" (1876.4)	73 3/8" (1863.7)
KEY	WIDTH	(B/2)-5 3/8" (B/2)-(136.5)	(B/2)-5 5/8" (B/2)-(142.9)
	HEIGHT	(OFH)-15 7/8" (OFH)-(403.2)	(OFH)-16 3/8" (OFH)-(415.9)



DWG NO. 1009860

DRN BY	CLW	DATE	11/9/12	CHK BY	SS	DATE	11/14/12	REV	4.0	DATE	01/18/22
--------	-----	------	---------	--------	----	------	----------	-----	-----	------	----------

ASSA ABLOY