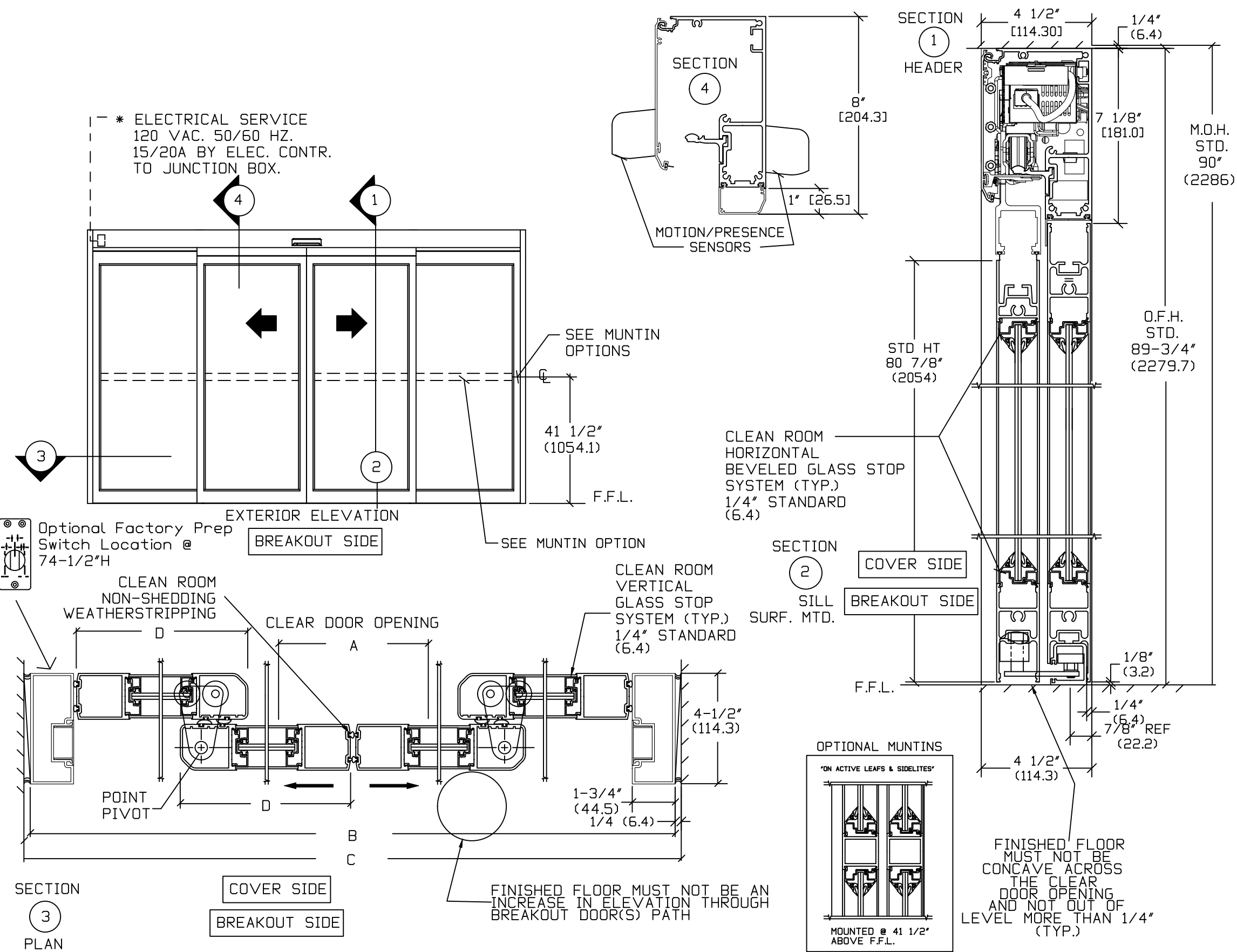


\*PACKAGE MEETS ISO 3 (CLASS 1) REQUIREMENTS



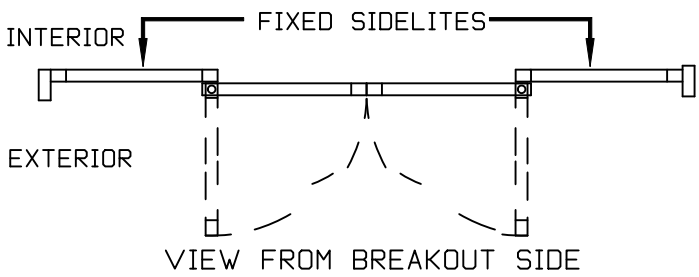
NOTE: THE STANDARD PACKAGE CONSISTS OF:  
THE AUTOMATIC OPERATOR & NON-SHEDDING WEATHERSTRIP, FRAMES, DOORS & SIDELITES WITH VERTICAL NON-SHEDDING WEATHERSTRIP, EMERGENCY BREAKAWAY. OPTIONAL POSITION SWITCHES (DIGITAL 3 OR 5) OR KEY (5)), (OFF-EXIT ONLY-AUTO-REDUCED OPENING-HOLD OPEN OR OFF, AUTO, HOLD OPEN), MOTION/PRESENCE SENSORS.  
OPTIONAL: ELBOW ACTIVATION SWITCH, BESAM ELECTRICAL CARRIAGE LOCK.  
STANDARD FINISH: CLEAR- AA-M12C22A41, CLASS 1, .018 MM.  
DARK BRONZE- AA-M12C22A44, CLASS 1, .018 MM.  
SPECIAL FINISHES ARE AVAILABLE.

NOTE DRAWING IS DIMENSIONED IN BOTH ENGLISH AND METRIC REF. AS FOLLOWS 1" (25.4) ALL METRIC SIZES ARE MILLIMETERS.  
\* FOR MAXIMUM CURRENT DRAW PER OPERATOR, SEE PRODUCT SPECIFICATION, INSTALLATION INSTRUCTIONS, OR THE UL LABEL ON THE EQUIPMENT.  
REFER TO RELEVANT (LOCAL, STATE, NATIONAL OR AHJ) BUILDING CODE FOR MIN DOOR HEIGHT & MIN/MAX WIDTH ALLOWABLE FOR EGRESS REQUIREMENT IN CONJUNCTION WITH TABLE BELOW.

SL500 OHC	DOOR OPENING A	OVERALL FRAME WIDTH B	MASONRY OPENING WIDTH C	ACTIVE & SIDELITE LEAF WIDTH D
8'	36" (914.4)	96" (2438.4)	96 1/2" (2451.1)	24 3/8" (619.1)
10'	48" (1219.2)	120" (3048)	120 1/2" (3060.7)	30 3/8" (771.5)
12'	60" (1524)	144" (3657.6)	144 1/2" (3670.3)	36 3/8" (923.9)
14'	72" (1828.8)	168" (4267.2)	168 1/2" (4279.9)	42 3/8" (1076.3)
16'	84" (2133.6)	192" (4876.8)	192 1/2" (4889.5)	48 3/8" (1228.7)
KEY	(B/2)-12" (B/2)-(304.8)	(C-1/2") (C-12.7)	(B+1/2") (B+12.7)	(B/4)+3/8" (B/4)+(9.5)

STANDARD GLASS SIZES ARE AS FOLLOWS;

SL500 OHC		1/4"(6.4)
8'	W	19 1/2"(495.3)
	H	73 7/8" (1876.4)
10'	W	25 1/2"(647.7)
	H	73 7/8" (1876.4)
12'	W	31 1/2"(800.1)
	H	73 7/8" (1876.4)
14'	W	37 1/2"(952.5)
	H	73 7/8" (1876.4)
16'	W	43 1/2"(1104.9)
	H	73 7/8" (1876.4)
KEY	WIDTH	(B/4)-4 1/2" (B/4)-(114.3)
	HEIGHT	(OFH)-15 7/8" (OFH)-(403.2)



DWG NO. 1011265

DRN BY	CLW	DATE	8/26/13	CHK BY	SS	DATE	8/26/13	REV.	4.0	DATE	01/19/22
--------	-----	------	---------	--------	----	------	---------	------	-----	------	----------

ASSA ABLOY