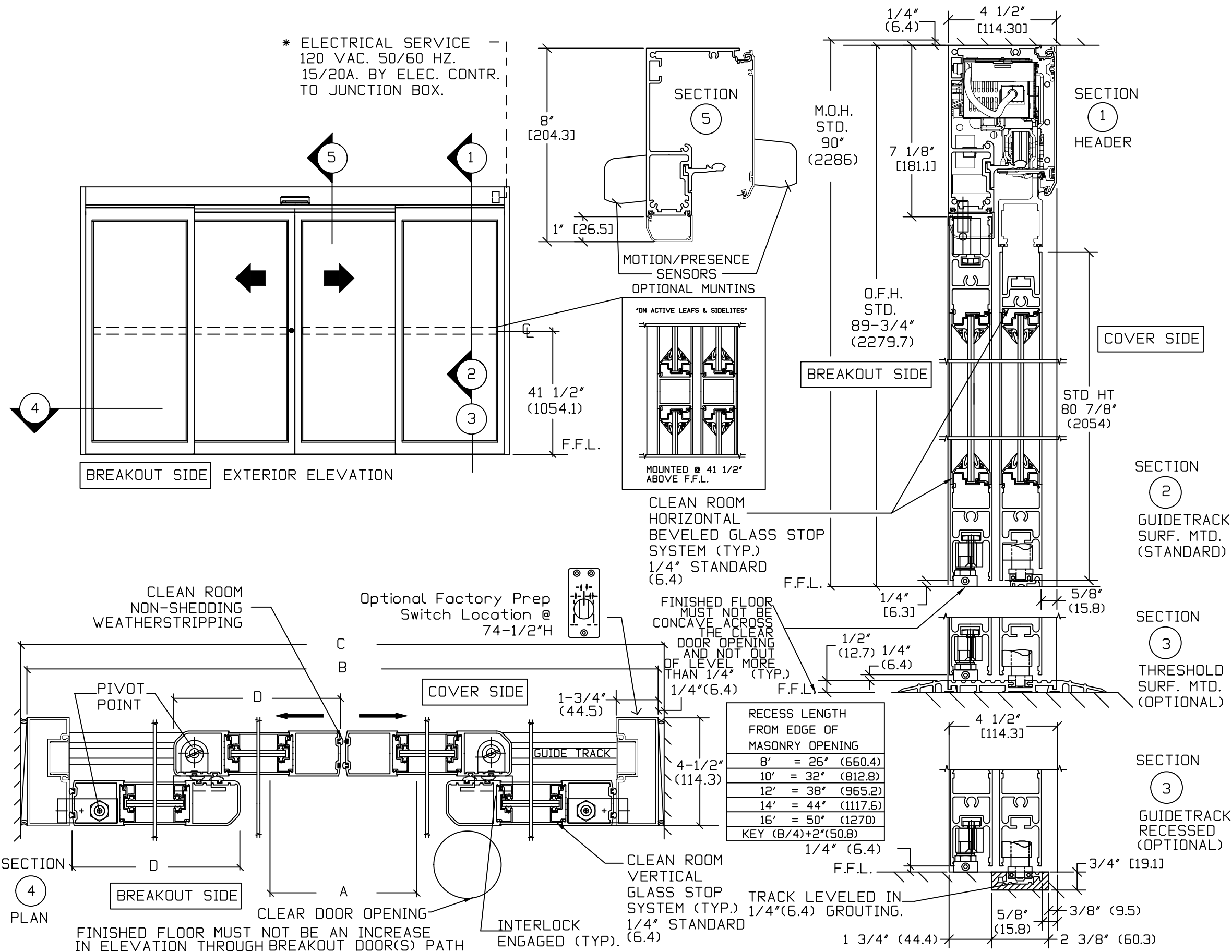


```
*PACKAGE MEETS ISO 3 (CLASS 1) REQUIREMENTS
```

\* ELECTRICAL SERVICE —  
120 VAC. 50/60 HZ.  
15/20A. BY ELEC. CONTR.  
TO JUNCTION BOX.



**NOTE:** THE STANDARD PACKAGE CONSISTS OF:  
THE AUTOMATIC OPERATOR & NON-SHEDDING WEATHERSTRIP, FRAMES,  
DOORS & SIDELITES WITH VERTICAL NON-SHEDDING WEATHERSTRIP,  
EMERGENCY BREAKAWAY, OPTIONAL POSITION SWITCHES (DIGITAL 3 (5)  
OR KEY (5)), (OFF-EXIT ONLY-AUTO-REDUCED OPENING-HOLD OPEN  
OR OFF, AUTO, HOLD OPEN), MOTION/PRESENCE SENSORS.

OPTIONAL: ELBOW ACTIVATION SWITCH, BESAM ELECTRICAL CARRIAGE  
LOCK.

STANDARD FINISH: CLEAR- AA-M12C22A41, CLASS 1, .018 MM.  
DARK BRONZE- AA-M12C22A44, CLASS 1, .018 MM.  
SPECIAL FINISHES ARE AVAILABLE.

NOTE DRAWING IS DIMENSIONED IN BOTH ENGLISH AND METRIC  
REF. AS FOLLOWS 1" (25.4) ALL METRIC SIZES ARE MILLIMETERS.

\* FOR MAXIMUM CURRENT DRAW PER OPERATOR, SEE PRODUCT SPECIFICATION, INSTALLATION INSTRUCTIONS, OR THE UL LABEL ON THE INSTALLMENT.

REFER TO RELEVANT (LOCAL, STATE, NATIONAL OR AHJ) BUILDING CODE FOR MIN DOOR HEIGHT & MIN/MAX WIDTH ALLOWABLE FOR EGRESS REQUIREMENT IN CONJUNCTION WITH TABLE BELOW.

SL500 OHC	DOOR OPENING A	OVERALL FRAME WIDTH B	MASONRY OPENING WIDTH C	ACTIVE & SIDELITE LEAF WIDTH D
8'	36" (914.4)	96" (2438.4)	96 1/2" (2451.1)	24 3/8" (619.1)
10'	48" (1219.2)	120" (3048)	120 1/2" (3060.7)	30 3/8" (771.5)
12'	60" (1524)	144" (3657.6)	144 1/2" (3670.3)	36 3/8" (923.9)
14'	72" (1828.8)	168" (4267.2)	168 1/2" (4279.9)	42 3/8" (1076.3)
16'	84" (2133.6)	192" (4876.8)	192 1/2" (4889.5)	48 3/8" (1228.7)
KEY	(B/2)-12" (B/2)-(304.8)	(C-1/2") (C-12.7)	(B+1/2") (B+12.7)	(B/4)+3/8" (B/4)+(9.5)

STANDARD GLASS SIZES ARE AS FOLLOWS;

SL500 OHC		1/4"(6.4)
8'	W	19 1/2"(495.3)
	H	73 7/8" (1876.4)
10'	W	25 1/2"(647.7)
	H	73 7/8" (1876.4)
12'	W	31 1/2"(800.1)
	H	73 7/8" (1876.4)
14'	W	37 1/2"(952.5)
	H	73 7/8" (1876.4)
16'	W	43 1/2"(1104.9)
	H	73 7/8" (1876.4)
KEY	WIDTH	(B/4)-4 1/2" (B/4)-(114.3)
	HEIGHT	(OFH)-15 7/8" (OFH)-(403.2)

Diagram illustrating the wall section from the breakout side. The diagram shows the interior and exterior views of the wall, including the foundation and the breakout side. The interior view is labeled "INTERIOR" and the exterior view is labeled "EXTERIOR". The diagram shows the wall section with the foundation and the breakout side. The diagram is labeled "VIEW FROM BREAKOUT SIDE".

DWG NO. 1011263											
DRN BY	CLW	DATE	8/26/13	CHK BY	SS	DATE	8/26/13	REV.	5.0	DATE	01/18/2

# ASSA ABLOY