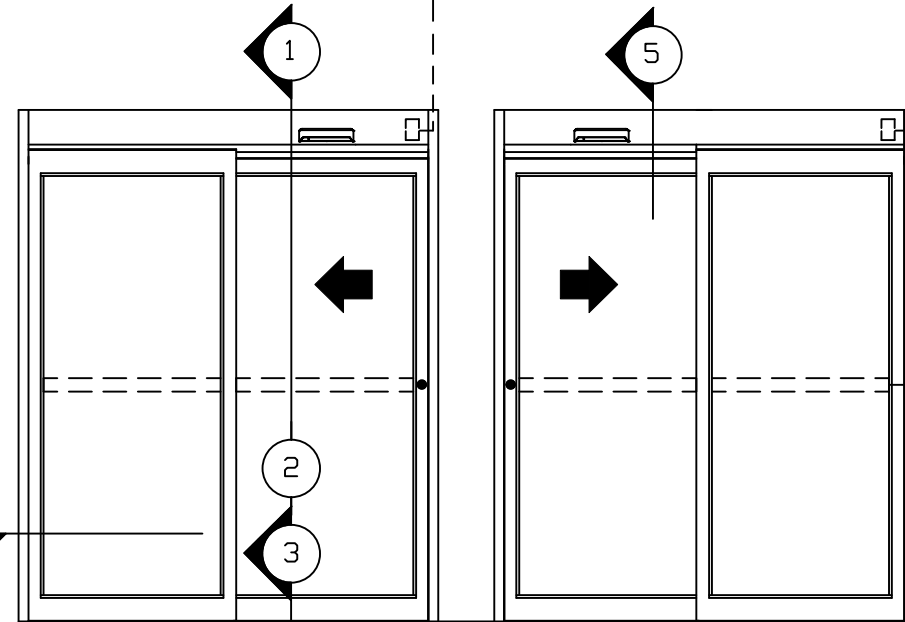


ASSA ABLOY SL500 CLEAN ROOM  
OVERHEAD CONCEALED FULL BREAKOUT  
NARROW STILE SINGLE SLIDE DOOR SYSTEM

\*PACKAGE MEETS ISO 3 (CLASS 1)  
REQUIREMENTS

\* ELECTRICAL SERVICE -  
120 VAC. 50/60 HZ.  
15/20A. BY ELEC. CONTR.  
TO JUNCTION BOX.

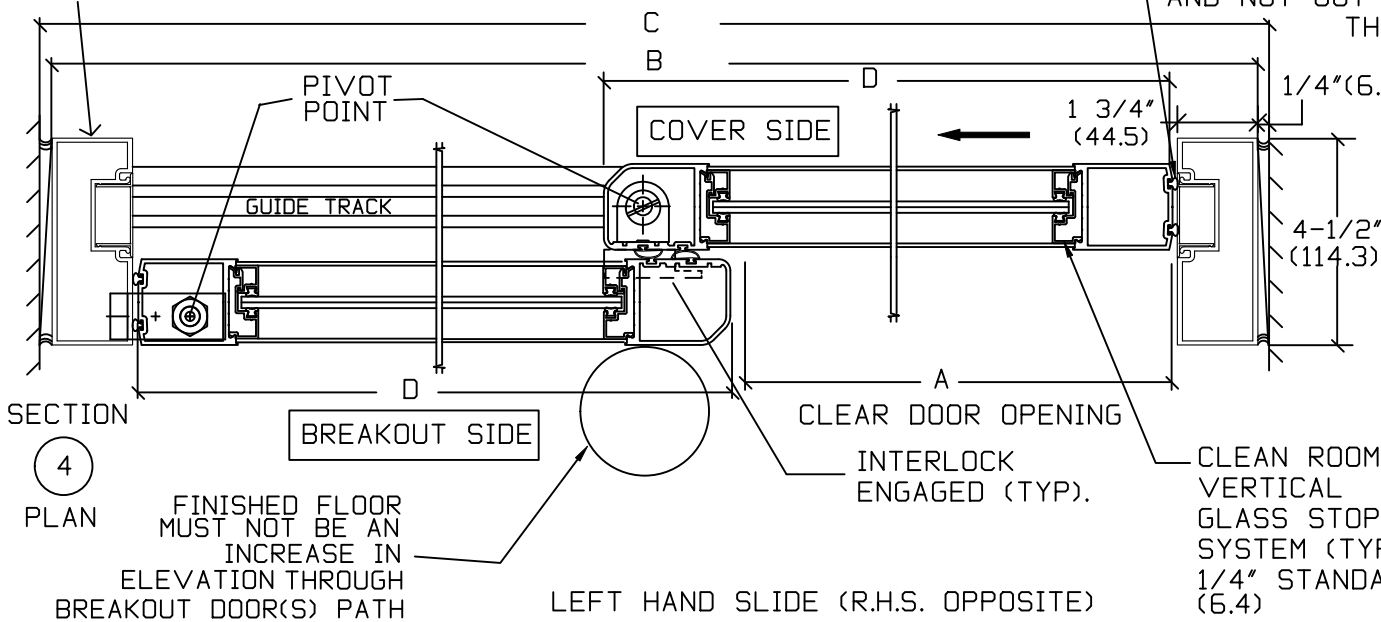


LEFT HAND SLIDE  
BREAKOUT SIDE  
EXTERIOR ELEVATION  
RIGHT HAND SLIDE

Optional Factory Prep  
Switch Location @  
74-1/2"H

CLEAN ROOM  
NON-SHEDDING  
WEATHERSTRIPPING

FINISHED FLOOR MUST NOT  
BE CONCAVE ACROSS  
THE CLEAR DOOR OPENING  
AND NOT OUT OF LEVEL MORE  
THAN 1/4" (TYP)



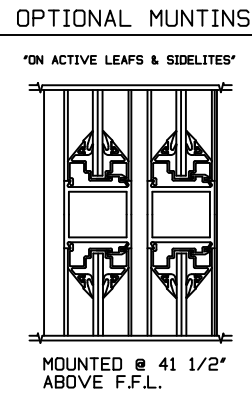
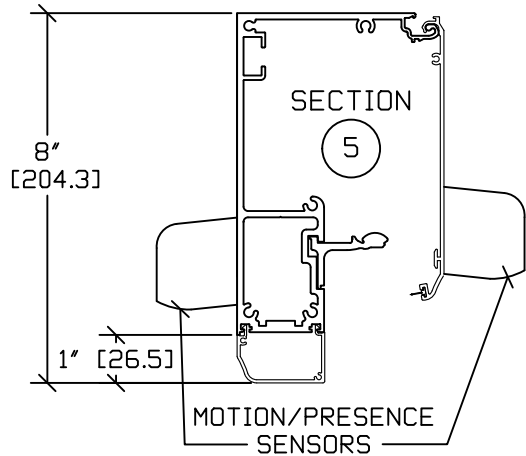
SECTION  
4  
PLAN  
FINISHED FLOOR  
MUST NOT BE AN  
INCREASE IN  
ELEVATION THROUGH  
BREAKOUT DOOR(S) PATH  
LEFT HAND SLIDE (R.H.S. OPPOSITE)

CLEAN ROOM  
VERTICAL  
GLASS STOP  
SYSTEM (TYP.)  
1/4" STANDARD  
(6.4)

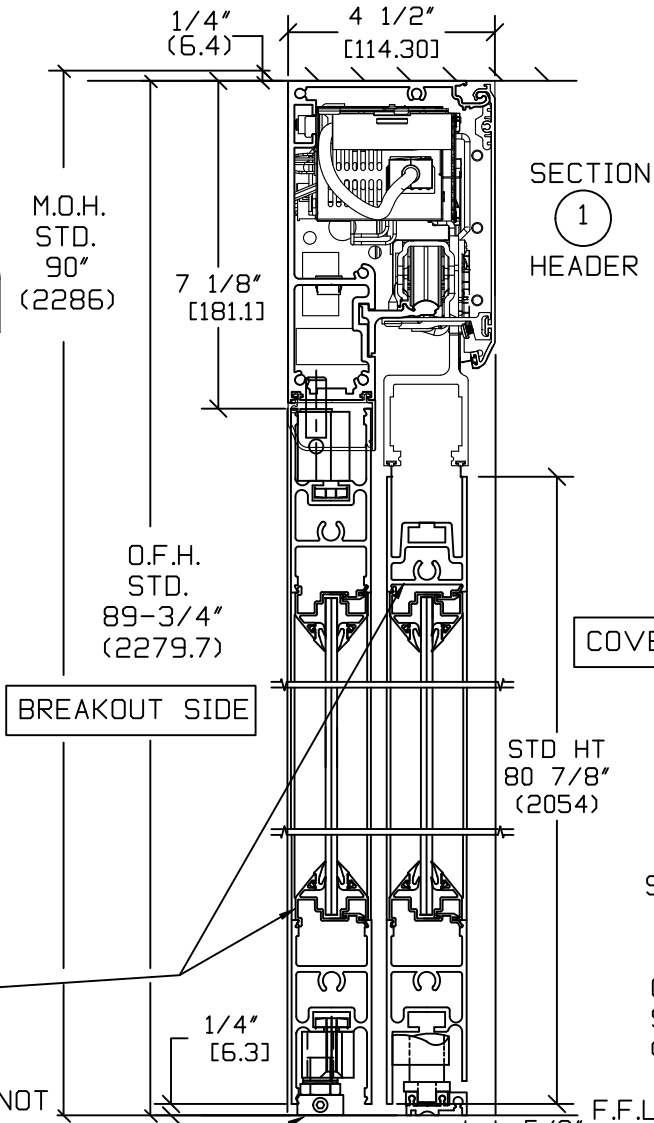
RECESS LENGTH FROM EDGE OF MASONRY OPENING	
7' = 43"	(1092.2)
8' = 49"	(1244.6)
8'-6" = 52"	(1320.8)
KEY (B/2)+1"(25.4)	

1/4" (6.4)  
F.F.L.

1 3/4" (44.4)



CLEAN ROOM  
HORIZONTAL  
BEVELED GLASS STOP  
SYSTEM (TYP.)  
1/4" STANDARD  
(6.4)



M.O.H.  
STD.  
90"  
(2286)

O.F.H.  
STD.  
89-3/4"  
(2279.7)

BREAKOUT SIDE

SECTION  
1  
HEADER

COVER SIDE

STD HT  
80 7/8"  
(2054)

SECTION  
2

GUIDETRACK  
SURF. MTD.  
(STANDARD)

SECTION  
3

THRESHOLD  
SURF. MTD.  
(OPTIONAL)

SECTION  
3

GUIDETRACK  
RECESSED  
(OPTIONAL)

NOTE: THE STANDARD PACKAGE CONSISTS OF:  
THE AUTOMATIC OPERATOR & NON-SHEDDING WEATHERSTRIP, FRAMES,  
DOORS & SIDELITES WITH VERTICAL NON-SHEDDING WEATHERSTRIP,  
EMERGENCY BREAKAWAY. OPTIONAL POSITION SWITCH (DIGITAL (3 OR 5)  
OR KEY (5)), (OFF-EXIT ONLY-AUTO-REDUCED OPENING-HOLD OPEN OR  
OFF, AUTO, HOLD OPEN), MOTION/PRESENCE SENSORS.

OPTIONAL: ELBOW ACTIVATION SWITCH, BESAM ELECTRICAL CARRIAGE  
LOCK.

STANDARD FINISH: CLEAR- AA-M12C22A41, CLASS 1, .018 MM.  
DARK BRONZE- AA-M12C22A44, CLASS 1, .018 MM.  
SPECIAL FINISHES ARE AVAILABLE.

NOTE DRAWING IS DIMENSIONED IN BOTH ENGLISH AND METRIC  
REF. AS FOLLOWS 1" (25.4) ALL METRIC SIZES ARE MILLIMETERS.

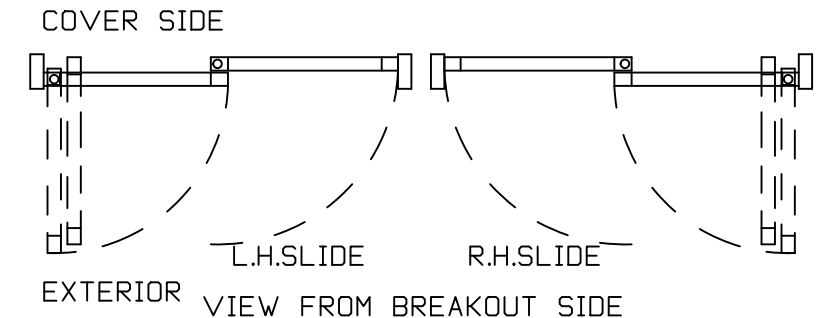
\* FOR MAXIMUM CURRENT DRAW PER OPERATOR, SEE PRODUCT  
SPECIFICATION, INSTALLATION INSTRUCTIONS, OR THE UL  
LABEL ON THE EQUIPMENT.

REFER TO RELEVANT (LOCAL, STATE, NATIONAL OR AHJ) BUILDING  
CODE FOR MIN DOOR HEIGHT & MIN/MAX WIDTH ALLOWABLE  
FOR EGRESS REQUIREMENT IN CONJUNCTION WITH TABLE BELOW.

SL500 OHC	DOOR OPENING A	OVERALL FRAME WIDTH B	MASONRY OPENING WIDTH C	ACTIVE & SIDELITE LEAF WIDTH D
7'	35 1/4" (895.4)	84" (2133.6)	84 1/2" (2146.3)	41 1/2" (1054.1)
8'	41 1/4" (1047.8)	96" (2438.4)	96 1/2" (2451.1)	47 1/2" (1206.5)
8'-6"	44 1/4" (1124)	102" (2590.8)	102 1/2" (2603.5)	50 1/2" (1282.7)
9'	47 1/4" (1200.2)	108" (2743.2)	108 1/2" (2755.9)	53 1/2" (1358.9)
KEY	(B/2)-6 3/4" (B/2)-(171.5)	(C-1/2") (C-12.7)	(B+1/2") (B+12.7)	(B/2)-1/2" (B/2)-(12.7)

STANDARD GLASS SIZES ARE AS FOLLOWS;

SL500 OHC		1/4"(6.4)
7'	W	36 5/8"(930.3)
	H	73 7/8" (1876.4)
8'	W	42 5/8"(1082.7)
	H	73 7/8" (1876.4)
8'-6"	W	45 5/8"(1158.9)
	H	73 7/8" (1876.4)
9'	W	48 5/8"(1235.1)
	H	73 7/8" (1876.4)
KEY	WIDTH	(B/2)-5 3/8" (B/2)-(136.5)
	HEIGHT	(OFH)-15 7/8" (OFH)-(403.2)



DWG NO. 1011262	DRN BY CLW	DATE 8/26/13	CHK BY SS	DATE 8/26/13	REV. 5.0	DATE 01/18/22
-----------------	------------	--------------	-----------	--------------	----------	---------------