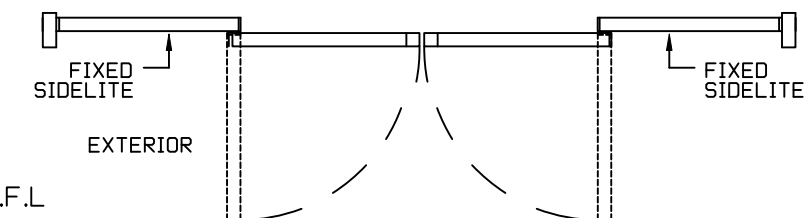


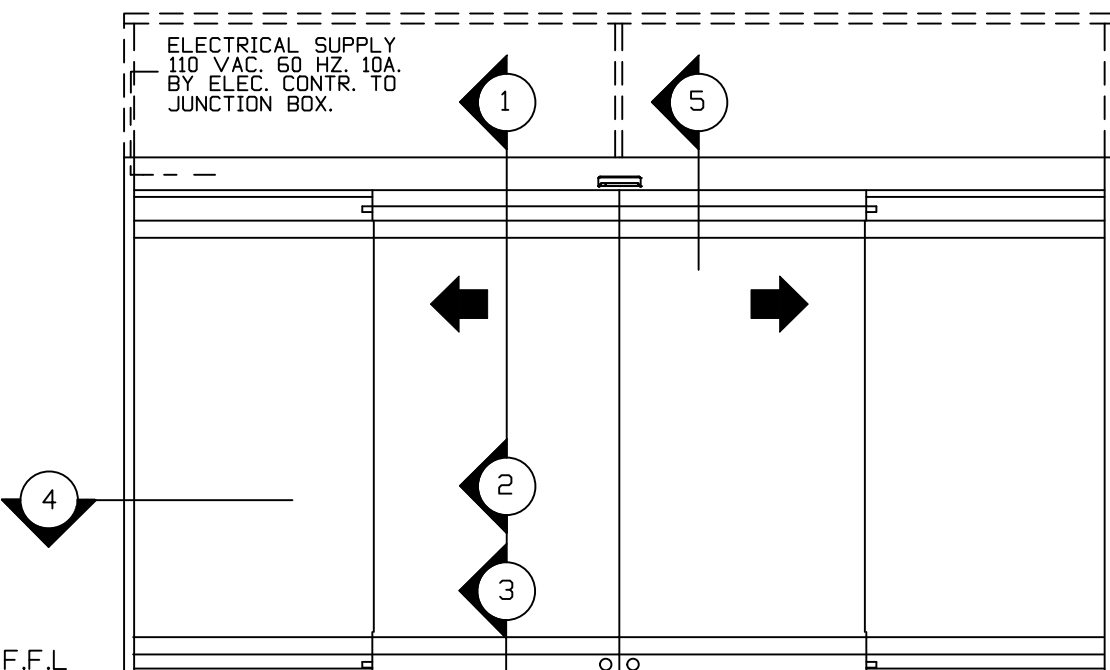
REFER TO RELEVANT (LOCAL, STATE, NATIONAL OR AHJ) BUILDING  
CODE FOR MIN DOOR HEIGHT & MIN/MAX WIDTH ALLOWABLE  
FOR EGRESS REQUIREMENT IN CONJUNCTION WITH TABLE BELOW.

OFW	DOOR OPENING A	OVERALL FRAME WIDTH B	MASONRY OPENING WIDTH C	ACTIVE & SIDELITE LEAF WIDTH D
10	45 1/8" (1171.6)	120" (3048)	120 1/2" (3060.7)	29 1/2" (749.3)
12	58 1/8" (1476.4)	144" (3657.6)	144 1/2" (3670.3)	35 1/2" (901.7)
14	70 1/8" (1781.2)	168" (4267.2)	168 1/2" (4279.9)	41 1/2" (1054.1)
16	82 1/8" (2085.9)	192" (4876.8)	192 1/2" (4889.5)	47 1/2" (1206.51)
KEY	B/2-13 7/8" (352.4)	C-1/2" (12.7)	B+1/2" (12.7)	B/4-1/2" (12.7)

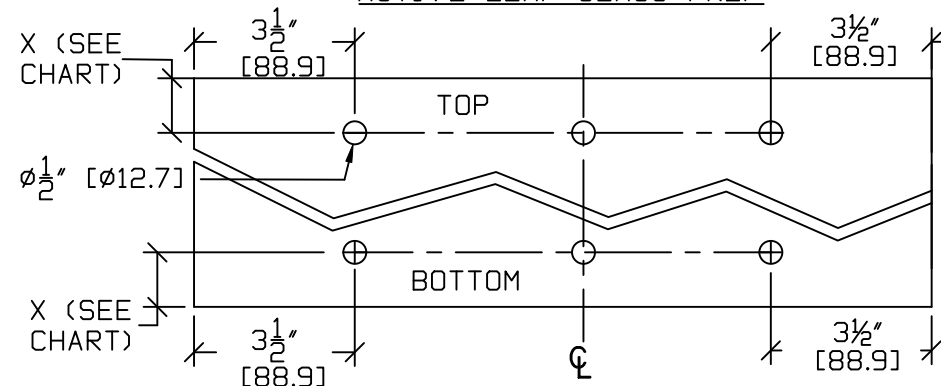


DWG NO. 1010471											
DRN BY	CLW	DATE	6/4/13	CHK BY	SS	DATE	6/4/13	REV	5.0	DATE	01/18/2

# ASSA ABLOY



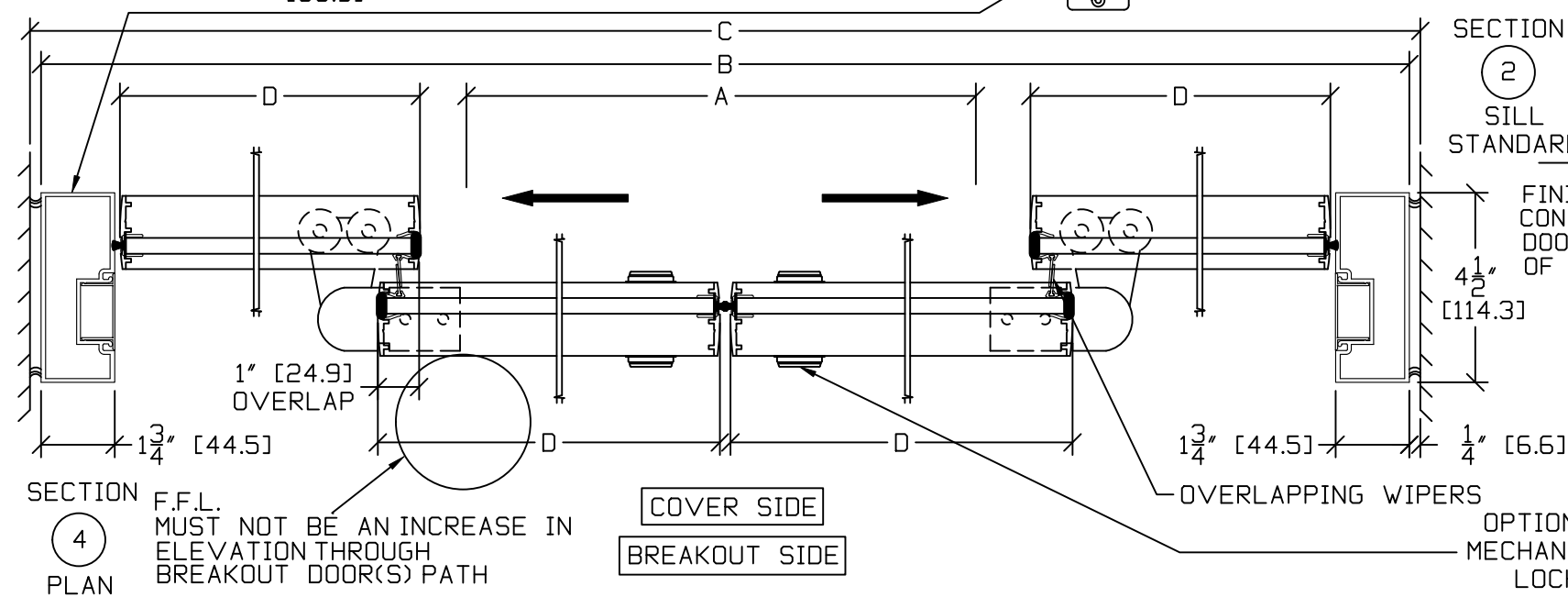
EXTERIOR ELEVATION  
ACTIVE LEAF GLASS PREP



\* Hole Placement to be within 1/16" STD HEIGHT  
\* Dowell surface may require 80 7/8" modification [2054]

Optional Factory Prep HEAT STRENGTHENED  
Switch Location @ SAFETY GLASS  
74-1/2"H (TEMPERED)

ASTM APPROVED  
SEALEANT REQUIRED  
BY OTHERS



FINISHED FLOOR MUST NOT BE  
CONCAVE ACROSS THE CLEAR  
DOOR OPENING AND NOT OUT  
OF LEVEL MORE THAN 1/4" —

SECTION  
3  
(OPTIONAL)  
SURFACE MTD.  
THRESHOLD  
W/LEADUPS

OPTIONAL FULL  
/ SILL THRESHOLD  
- F.F.L

NOTE: PACKAGES WITH TRANSOM MUST HAVE OVERHEAD SUPPORT BY OTHERS.